

CLASSINGS

CULLINGS '22

SECOND DRAFT: SLIGHTLY LESS RISKY EDITION

Publisher:

Bill & Rose Walker
25 Sturt Street,
Murray Bridge SA 5253
Mobile 0428 973 804
Email: classing@internode.on.net

CLASSINGS CLASSIC 2022

Monday September 5th 2022 | 1:30pm
New Murray Bridge Race Course
Brinkley Road, Gifford Hill
South Australia

CLASSINGS

MERINO SHEEP CLASSING AND WOOL TESTING SERVICE



SHEEPCLASSING & MERINO ADVISORY

Classings Merino Sheep Classing and Breeding Consultancy began in 1962 under the direction of Don Walker and continues today under the custodianship of son, Bill.

Experience gained from years of in yard/race visual classing backed up by results and subsequent information gleaned from Classings Fibre Testing facility, validates any breeding conquests undertaken on clients' properties.

Bill now classes over eighty commercial and twenty two studs over four Australian states guiding them toward the best tactics in breeding high quality Merinos that meet all fibre and meat expectations.

It's a prerequisite that all flocks classed eventually exude a skin that is productive yet easy care as to intrigue a young, aspiring wool producer.



FIBRE MEASUREMENT FACILITY

Classing's Wool Testing Service has been in operation since 1972 and has been using the CSIRO developed Laserscan extensively since 1996 under the management of director, Rose Walker.

The Laserscan added another dimension to the business with the additional measurements produced and subsequent interpretation on flowing to clients (and non) as a means to improve flock quality, production & performance.

Classings welcomes the addition of Bec Hughes to the laboratory whose passion and drive with all things fibre is impressive to say the least!

The Lab tests sample from across the nation including the obvious merino, Alpaca, Mohair & Angora,

For all testing options and sampling requirements please go to our website.



CLASSINGS CLASSIC POLL MERINO RAM SALES

The Classings Classic sale was initiated in 2002 with 42 rams from specially selected studs that were seen to be progressive in their endeavour to breed genuinely plain bodied yet productive polled animals.

The rams exhibited only plain breeches and sometimes bare of huge staple length which address today's ever boiling mulesing discussions.

The theme is no different today with the sale in 2020 offering 97 progressive poll rams from 24 hand picked studs, averaging an all sale high of \$5,442 to a top of \$24,000. CC21, a new record at \$5,896 to a top of \$20,000

ASBV's when available are now a prerequisite for all entering studs. With accuracies always on the improve there's a hope that, considering structural soundness is intact, that the need for intense shed preparation of any young ram may one day become obsolete!

MERINO SHEEP CLASSING AND WOOL TESTING SERVICE

Bill and Rose Walker

25 Sturt St. Murray Bridge SA 5253

classing@internode.on.net

www.classings.com.au

Mobile 0428 973804



Welcome to this year's Cullings '22.

Welcome to Cullings'22, a Newsletter that's getting harder to create by the year as one gets busier approaching forty years of service! It was never forecast that I'd be classing upward of 80,000 ewe hoggets plus rams per annum increasingly making this very thing harder to concoct!

The excitement involved with the continual lift in quality of existing clients, Commercial or Stud, and more so the explosion of the same in the often way-below-par-for-quality newbies will keep me going for awhile yet across four states. Not grabbing a bunk with an often very social clientele by slipping into hotels, motels and mate's shacks, huddling in airport lounge corners, and late nights when home in my office is all part of the build!

Breeding results including fertility lift, stock that are Mules Free capable, ASBV accuracy build up, above average prices for quality fibre and up to 300c greasy for the unmuled version, six/eight month shearing capable and explosive meat prices sees the Mighty Merino mighty all over again!

At the same time a few things that require a second glance pop up and make you think that wool ain't always wool and that we need to protect the great commodity that we have ownership to ...

"... a fibre chosen for its specific qualities... only the best will do. The Romney wool fleece is lustrous and combines several important traits. It has the finest fibre of all the longwool breeds, a uniformed crimp and a consistent micron count across the body..."

When you get over the initial shock of such a promotion of a seriously good looking woman's outerwear jacket, the company have their wording fine tuned and accurate enough that one couldn't argue that much over a Rogers in the front bar of the OBH in Cottesloe!!

Across the nation the season is generally amongst one of the best we've seen for awhile albeit obviously too wet in much of NSW & parts of Queensland. Subsequently this year's ram sales should easily match those prices of 2021 considering both of our important markets are firing very well at the minute and particularly if you have 17.9u and finer with your young stuff.

The Andre family achieved a 2,725c greasy price high with ten bales of the good stuff recently where 300c of it was claimed by their wool fella due to their unmuled/RWS status. See a contribution from Peter regarding the ways and means of how it's done!

Have been warned of late that the mulesing discussion may become second fiddle to the worldwide methane gas emission issue from livestock, obviously including our merinos so you might all be hearing more about that and associated research into the subject from here on.

The fifth consecutive SA Sire Evaluation Trial Field Day at David and Gwenda Eckert's, Mentara Park was an absolute success with around 120 punters enjoying an extremely well organised day with information to boot, great presenters, respected sponsors and the stock looking amazing. See the report within this publication with only the raw fleece weights included unfortunately due to printing deadlines.

ASBV's thankfully continue to infiltrate into many stud breeding systems, building up accuracies by the year and making this Classer's decisions much easier in deciphering what's right and what's not especially at multi vendor sales including the Classic where there can be a 40kg range totally hinging on feeding regimes and not mush else!

Speaking of the Classic, it's our 21st sale this year so would be keen to see you come along and help celebrate the journey.

Enjoy the read, Bill.

Publisher:

Bill & Rose Walker
25 Sturt Street,
Murray Bridge SA 5253
Mobile 0428 973 804
Email: classing@internode.on.net

Editor

Bill Walker

Layout & Print

Print City
4 Rayson Street, Murray Bridge SA 5253
08 8531 1035
hello@printcity.net.au
www.printcity.net.au

2022 RAM SALES & FIELD DAYS THAT COUNT!

* MERINO FIELD DAYS

July 4th EYRE PENINSULA FIELD DAY
WUDINNA SHOWGROUND S.A.

July 15th - 17th BENDIGO SHEEP SHOW
BENDIGO Vic.

July 20th S.E. MERINO FIELD DAY
KEITH SHOWGROUNDS S.A.

July 29th MALLEE MERINO F/DAY S.A.
MURRAY BRIDGE SHOW GROUND

July 31st - Aug 2nd SHEEPCONNECT
HAMILTON Vic. (ex SHEEPVENTION)

Aug 15th MARNOO FIELD DAY
MARNOO OVAL Vic.

July 27th PIMBENA Wirrulla SA
Les Hamence 0428 268 002

July 28th O'BRIEN POLL Wudinna SA
Showground
Darren O'Brien 0419 772 173

Aug 4th LUCERNBRAE Callington SA
Keith & Judy Paech 0415 701 493

Aug 8th RIDGWAY Lameroo SA
Ric 0459 432 679 / Matt 0439 460 554

Aug 9th RAMSGATE Tintinara SA
Jed Keller 0427 691 858
Craig 0418 259 049

Aug 10th RIDGWAY ADVANCE
Bordertown S.A.
David & Karen Ridgway
0409 408 263 08 8754 2028

Aug 15th FLAIRDALE Cooke Plains SA
Wayne Lehmann 0408 896 877
Matt 0417 843 063

Aug 17th BADERLOO Spalding SA
Daniel Hammat 0439 347 362

Aug 18th CALCOOKARA Cowell SA
Brenton Smith 08 8628 5039
0427 285 039

Aug 19th KARAWATHA PARK
Buckleboo SA
Bert Woolford 0427 274 030
Dion Woolford 0427 323 583

Aug 25th BENEFIELD Murray Bridge
S.A. Murray Bridge Showgrounds
Chad Burbidge 0428 554 003

Aug 26th COLEBURRA POLL Culburra S.A.
Chase Ferguson 0439 280 775
Gary 0428 560036

Aug 30th NANTOURA Wharminda SA
Chris Prime 0427 289021

Aug 31st BORUNG Waikerie SA
Brenton Kroehn 0427 414 494

Sep 3rd PEPPERWELL Keyneton SA
Hans Graetz 0427 790 676
Peter Wilkinson 0427 427 691

Sep 1st GUNALLO Pinnaroo S.A.
Ray Schroeder 0427 778 485
Brad 0400 335 660

Sep 2nd SUPERIOR WOOL MERINO
Tintinara S.A.
Richard Harkness 0428 758 028

Sep 2nd PEPPERWELL Keyneton S.A.
Hansi Graetz 0427 790 676

Sep 5th CLASSINGS CLASSIC '22
New Murray Bridge Racecourse S.A.
Bill Walker 0428 973 804



Sep 9th CAROONBOON Wanganella NSW
Margie Pye 02 6825 6203 - 0427 996 911

Sep 9th ADELAIDE RAM SALE

Sep 9th SOHNIC Marnoo Vic.
Scott Nicholson 0438 086 403
Greg Hose 0427 507 151

September LONE GUM Crystal Brook SA
Private Inspection
Stuart Everett 0427 362 801

Sep 13th LEAHCIM Snowtown SA
Andrew Michael 0418 828 431
Alistair 0427 352 639

Sep 15th FOREST SPRINGS - Joel Joel Vic
Bruce Dean 0407 054 342

Sep 15th CHALLARA Badgingarra W.A.
Peter Wilkinson 0427 427 691

Sep 21st HYNAM POLL Longwood Vic
Kev Hynam 0427 833 262

Sep 22nd Wallaloo Park Inspection Vic.

Sep 29th Wallaloo Park Ram Sale Vic.
John 0427 5014 31 Trent 0427 776 114

Oct 14th ELLA MATTA Parndana SA
Andrew Heinrich 0427 596 108
Jamie 0427 361 830

**2022 Feb 6th LORELMO Walcha NSW
Ed Cordingley 0429 486 380



Classic Sponsor



Trusted, Effective, Affordable.

www.compassfeeds.com.au

Classings Classic '21

MURRAY BRIDGE RACECOURSE

OFFERED 95 SOLD 91

TOP \$20,000 AVERAGE \$5,896

Our catalogue introduction to the Classic's 20th sale ... "The handpicked studs and animals represented here are, in our eyes, embracing all of the tools that good progressive and proven genetics can offer. They produce poll rams and offspring that meet the demands that are required for the present and not the past. Mules free, 6-8 month shearing intervals, much higher fertility, improved staple length and general animal health are all traits that are synonymous with the genetics on show here today.

ASBV's are the neutraliser that help sort animals that are much better fed than others making it easier and more precise in selecting genetics for your preferred traits. Please familiarise yourself with these numbers and feel free to ask those in the know as they are the future of this mighty industry.

Remember though that there are no sheep breeding values for bad hocks, sprung pasterns, suint, show ribbons (and similar atrocities) that regularly haunt the industry today. What you see and handle combined with fluid nourishment, lustre and bold crimp still head the list - then, back those visuals up with the ever accumulating numbers of high accuracy."

It's difficult to know where to start with any writeup concerning a sale like this. Top price of the day, multi ram purchases from one purchaser, W.A. & Victorian rams that endure the journey, debut studs, sponsors, the excellent venue, the never ending support of the beautiful Rose, the list is endless. Most importantly the day was yet another huge success with 95 pens graced with some of the best top end poll rams in the nation, meeting all of the criteria that the introductory spiel encompasses.

Initially there were 99 rams penned for the day but there were four withdrawals the week leading up to sale day which makes it easier to understand how Pen 96 made top price for the day even though 95 rams were offered! It was **Mernowie's - Marrabel S.A.** day with their sole entry stunning most with his presence and selling for \$20,000 - a welcomed return by the stud after a five year absence.



Mernowie 201080, a PP and bred by Mernowie's own 181054 looked as good as he did as a youngster months previously at the most ill timed event on the merino calendar, the Burra Merino Field Days (in March) Deep barrel, great neck extension and very upright on his feet were just some of the features that enticed Gunallo Poll, Pinnaroo S.A. into his eventual purchase. (See above photo) A good balance of figures added to his much appreciated fibre: 18.6u 2.9sd 15.7cv with YWT 11.3 YEMD 1.6 YFD -1.5 & FAT 0.1. Ridgway Poll were runner up bidders.

In catalogue order from here on now saw **Nantoura, Wharminda S.A.** heading the auction due to the stud's incredible success the year before with their \$21,000 sale topper. The studs third in their lineup, Nantoura 200164,

PP, and bred by Ramsgate 180177 (x Brookdale 014012 x Leahcim 100858) held all the good pedigree and visuals to sell to another prominent E.P. stud and CPL clients, Calcookara, Cowell S.A. for \$7,000. A bold crimper at 18.9u 2.9sd 15.5cv & 0.0pf with YWT 9.2 YCFW 23.7 YSL 20.0 YEMD 1.4 & FAT 0.2 sees safe balanced figures that dotted themselves all the way through this catalogue.

EP Livestock's, Richard Hill bought Nantoura's second for \$4,500 including the silky figures of 17.3u 2.4sd 14.0cv 0.0pf to match the quality bit of gear on the back but also boasted a trait leading YCFW 31.2 and YSL 31.2 with MP+ 179. Quality's Dave Wittenbury played detective and outlaid a cool \$5,000 for the day's mystery buyer again at the excellent realtimes of 17.2u 2.5sd 14.6 & 0.2 including YFD -1.3 for another bold crimper.

Ah yes ... YFD, the most underutilised ASBV on the list now it seems, due to the chase for the quickest growing carcass on the planet all at a time when the rewards for sub 18u with young wools is as rewarding as it has been for years!

The merino loving public would be in dismay if **Gunallo, Pinnaroo S.A.** ever had a shocker result at any Classic sale! 2021 was no exception seeing the stud realising an excellent average of \$8,250 for the eight the stud offered. The first on offer became the day's second highest price at \$19,000 and selling to Glenville Stud, Cowell S.A. Gunallo 200999 a PP and interestingly bred by Calcookara 170400, stood beautifully all day and was much revered. His stature was rewarded with YWT ASBV 14.1, in the top 1% across the land! A Stock Journal report suggested that Glenville's Daryl and Clay Smith were, "... drawn to the 136kg ram's big, square frame, with good nourishment, and bright pearly white wool". Correct!

Gunallo's second, 200538 (x Gun 150460) sold to Rosy's first cousin and CPL clients, Tom and Liz Willson, Penneshaw S.A. for \$8,000. Spruiking the great numbers of YWT 11.0 YCFW 28.0 YSL 16.1 & YFD -1.5 with YEMD 0.1 & YFAT 0.6 the skin makeup of this fella was amazing and will only enhance or lift Trout's home ram breeding project to a new level. The stud's third made \$3,000 and went to the Brennan family at Wongan Hills W.A. with YWT 11.0 YCFW 25.0 YSL 13.8 and deserved better dosh!

The local Hiller family outlaid \$10,000 for a ram breeder, Gunallo 200456 and again bred by Calcookara 170400 with great balance including YFD -1.4 and MP+ 165. That James Bond styled purchasing by Dave Wittenbury popped up again for Gunallo 200442 in Lot 8 and again bred by the Calcookara sire and cracking \$6,000.

One of the picks of the lineup in Lot 9, 200216 and bred by that Supersire Gun1780295, sold to CPL client Paul Schaeffer for \$7,500 with more outstanding figures of YCFW 31.0, YWT 31.0 & MP+ 171 and a PP. Fibre supreme with this bloke and look forward to a viewing at classing this year. Borung Poll bought a similar ram, Gun 200411 yet this one bred by Calcookara 170400 with YCFW 25.0 YWT 11.2 YFD -1.4 coated in the fantastic stuff. Gunallo's last, 200699, sold via our mate Glendon Hancock, Elders St. Arnaud on behalf of Bruce Dean's Forest Springs Vic. for \$7,500 and a PP.

The Lehmann's **Flairdale, Cooke Plains S.A.** had a reasonable day out selling both of their well structured polls for \$4,000 a piece with the first thumper selling to Lee Slape, Cooke Plains and bred by Flairdale 180015 that in turn was bred by Moojepin 120652 hence some outstanding carcass figures: YWT 9.4 YEMD 1.3 YFAT 0.5 add YCFW 25.6 & YSL 14.0 The second, 200052, and selling to the ever ascending Pimbena Poll, Wurrulla S.A. had 'wool everywhere' with great outlook aided by YCFW 27.7 YWT 8.8 YEMD 1.0 YFAT 0.6 and a PP.

The popularity of **Leahcim. Snowtown S.A.** continues with the stud's two Classic'21 entries. Of importance was the breeding of both stemming from a Leahcim ram, 182185, that sold at Classic'19



for \$14,000 selling to CPL clients, Westwood Poll, Cascade W.A. Not only was he the sire of these two Leahcim entries but he also bred over 70% of Westwood's Esperance sale team a week later!

The first at Lot 14, 202484 sold to the Superior Wool Syndicate (SWS) and hit \$17,000. Important figures here and I'll start with a realtime micron of 17.0u and a YFD -1.7 to backup the quality fibre on is back. Now add YFAT 1.1 YEMD 0.8 YWT 9.1 YCFW 21.7 & YSL 14.2. The carcass growth potential here hasn't affected wool quality including a great micron result on both fronts. Leahcim's second, 202886, didn't disappoint either, selling to Gunallo for \$6,500. Fibre great again backed up with 17.2u YCFW 30.4 YSL 14.4 YWT 10.1 & PP. Stay tuned later in this writeup for the Westwood result from the same sire and later in the publication for their Esperance Sale result as to totally realise the sire's importance.

After a triumphant return to Classic'20 after a bit of a gap, the **Wallaloo Park's, Marnoo Vic.** CC'21 team crept up the order a bit and didn't disappoint. Their first, 200268 at Lot 16 sold to CPL clients, Ramsgate, Tintinara S.A. for \$15,000 and barely fit into the pen such was his girth. YCFW 24.5 YWT 8.3 & EMD 0.7 and the fibre we're all used to from this stud of influence should see great impact out the other end.

At \$12,000, CPL clients, Brenton and Penny Kroehn's Borung Poll, Waikerie S.A. may have bought their best Wallaloo Park Poll ever! The stud has had a huge influence here and we're hoping this bloke will take them to the next level. WP 201413 boasted all round good figures with balance including YSL 13.5 & YWT 7.2.

CPL classing clients, Chad Burbidge's Benefield, Murray Bridge S.A. bought Wallaloo Park's third in lot 18 for a respectable \$8,000 and bred by WP 170760 via ET. Very good fibre here backed up by YCFW 24.1 YWT 10.1 and that YFD, a top 25% nationally -1.5 and an extreme MP+ 195. This stud is about to take the Murraylands by storm such is the quality of the joint ...

I bought the fourth in the lineup for CPL clients, Frankland River Grazing's, "Westfield", Frankland W.A. for a healthy \$12,000 that will enhance/maintain one of that areas' best commercial flocks. Bred by WP 180060 and boasting YCFW 28.0 YSL 13.8 & YEMD 0.3.

Ric, Gail and Matt **Ridgway's Ridgway Poll - Lameroo S.A.** recovered reasonably well after passing their first for a realistic reserve which wasn't quite met. Lone Gum, Crystal Brook S.A. latched onto their second in Lot 26 for \$6,000 and bred by that SuperSire Gunallo 170295 of which the Ridgway's were a semen share in at Classic'18 when he was sold to the Superior Wool Syndicate for \$60,000. This fella was tremendous for shape and structure and was backed up with YWT 8.8 YCFW 29.0 YSL 12.0 and a PP.

The next two sold for an over realistic \$3,000 with the second of the two eventually selling to Critta and Bec Freeman, Penong S.A. after I initially purchased him for Netallie Station as a possible ram breeder. Great carcass traits here due to the pedigree including Flairdale 180015 (x Moojepin 120652) on the sire side with YWT 9.3 YCFW 23.3 YEMD 0.5 YFAT 0.5 PP and MP+ 163.

The steal of the whole day was Ridgway's next in Lot 24 that sold to CPL client Grant Wageknecht for a measly \$2,000 which was a total mystery to many. I classed Grant's ewe hoggets not long after the Classic and once completed we perused the worker rams. This fella stood out and looked like a \$10,000 ram as we both shook our heads in different directions. Grant with a grin and head up and down and me sideways in disbelief at how it could have happened!

Another Gunallo 170295 son sold for \$4,000 to the newly formed Chain Pump Poll, Mundulla S.A. coated in super elite fibre with density at YCFW 23.7. A Flairdale 180115 son with YWT 8.6 YEMD 0.7 YFAT 0.8 PP & MP+ 160 sold to Trevor and Craig Gameau for \$3,000. The Marsson clan from Meningie S.A. bought a ripping lot 27 at \$4,000 with YCFW 24.5, Dean Pearson the next at \$3,000, Grant Wageknecht again with a bargain screamer at \$3,000 and another at \$2,000, Chain Pump Poll at Lot 30 at \$3,000.

Ridgway's Lot 32 realised better value on the stud side accruing a deserved \$4,000 and selling to that mystery man on behalf of Quality Wool. This ram,

200414 was loaded with the perfect length, density and fibre exotic backed up with a YCFW of 30.7 YFD -1.6 & MP+ 172.

A mixed day for the Ridgway family and many wondered was it due to the first ram being passed in that had a negative effect on the rest of the sale team that deserved far better pricing considering the quality potential of the team.

Lone Gum - Crystal Brook S.A. had an incredible day in 2020 and backed up with another at Classic'21 selling their top to Lucernbrae, Callington S.A. for \$4,000. No ASBV's here yet but very soon will all be happening. Their first at Lot 33, 200167, was bred by Penrose 180499 (x Leahcim 163725) and displayed the excellent realtime figures of 18.2u 2.6sd 14.0cv & 0.0pf. This leading ram looked as good as anything on the day with the fluid nourishment that any Mid North stud should aspire to!

The next sold to Raminion Pastoral, Brinkley S.A. for \$3,500 and was bred by the same Penrose sire. Astounding realtimes here as well which matches the intense quality of this Crystal Brook outfit - 18.7u 2.1sd 11.5cv & 0.0pf may give you a fair idea at just how good the skin and fibre package was with this poll. Mark and Goog Baldock's Tola Poll, Kimba S.A. bought Lone Gum's third for an over realistic \$2,500 with 17.7u 2.8sd 15.8cv & 0.2pf and a PP and the last selling to Wayne Schenke, Brinkley S.A. for \$3,000 with again excellent figures of 18.0u 2.5sd 13.9cv & 0.0 and a PP

With the Lone Gum team looking so good including incredible skins and subsequent outstanding fibre quality, we could expect that when the stud comes online with ASBV's, that their YFD trait figure could be approaching the -1.8 to possible -2.0's. With every second stud's bullish approach to intensify early growth traits recently, the YFD figure has largely been ignored within that chase. Considering the stud's high use of Wallaloo Park over the years, the balance of all traits should be easy to accomplish without swaying too hard in any one direction.

David, Karen and Dev Ridgway's, **Ridgway Advance (Autumn Drops) - Bordertown S.A.** bolted out of the blocks with an amazing sale across their first team of the day. The whole team was loaded with the skin, fibre and carcass package that the stud is renowned for.

White fibre appreciators, Pleasant Park, Goroke Vic, outbid many to \$10,000 with a ripper backed up with a YCFW 24.5 yet it was the second in the Spring Drop lineup that took most of the attention, RA 201178 bred by the stud's renowned 160090 amassed a lot of attention and eventually sold to CPL clients, Challara Poll, Dandaragan W.A. for a respectable \$16,500.

The stud's principal, Peter Wilkinson, was impressed with some video I had sent him of the ram as well as what was on offer via the AuctionsPlus platform. This bloke will add to the stud's structure focus and his outlook suggests that he may be a King of fertility!



Challara's second potential purchase choice yet now no longer required amassed \$6,000 and sold to that James Bond type client of Quality Wool. 201182, ET bred and again sired by RA 160090, had the typical RA figures of 18.2u 2.3sd 12.6cv & 0.1 with a YSL 12.8 & YFD -1.4. The next and bloody

hell, again bred by that SuperSire 160090, sold to Peter and Scott Masters, Wharminda for \$4,000 at 17.4u 2.6sd 14.9cv 0.2pf & YSL 13.0 & YFD -1.6 and the complete package.

Keeping the 160090 theme on the go, a son, 180251 bred the next, Lot 41 and sold to one of the West Coast's best, O'Brien Poll, Kyancutta S.A. for \$8,000 with one of the best fibred rams of the day and pushing out staple length which converted to YSL 13.9 & 19.6u at 0.0pf. Dean Bourlet, Wynwood, Jugiong, NSW paid \$4,000 for the next and bred by a 160090 Syndicate with YWT 8.6 YCFW 26.8 & YEMD 0.1 and another \$4,000 for the next and bred by the same RA16090 Syndicate and selling to Roma Downs, Keith who later added another two Spring Drops at \$3,000 each with one of these at Lot 48 expressing huge staple length backed up with a YSL 13.5.

A few studs with a slightly more traditional approach with their breeding strategies are appearing at Classic sales as a possible recognition of what the world needs right now! Warren Beatty's Mallee Hill, Ceduna S.A. outlaid \$8,000 for Ridgway Advance's next at Lot 44 with the excellent realtime figures of 18.9u 2.6sd 13.6cv & 0.0 which matched the exotic skin and fibre attributes.

The Farr families from the Mantung/Wunkar S.A. direction have forever been big Ridgway Advance fans with the David Farr enterprise latching onto one of the line-up's best at Lot 45. Such is RA 160090's influence, he bred another excellent sire, RA 180476 that bred the \$5,000 Farr pickup including more of this studs many trait leading numbers, micron. 17.7u 2.6s 14.7cv & 0.4pf aptly backed up with a YFD -1.6 and a safe YCFW 22.0 with a super white bit of gear on his back.

Jeff and Mark Baldock, Kimba S.A. are big fans of the Classic sales and again scored well and fought a bit to get their RA ram of choice, the last of the Spring Drops for \$7,500. Despite the rams visual appreciation for both fibre and carcass the numbers backed things up with a YWT 8.9 YCFW 23.9 YSL 13.2 & YFD -1.1 and RA160090 as a grandpa!

At last viewing leading up to the Classic'21 sale, the two Pimbena entries looked tremendous yet unfortunately one developed a stone and was withdrawn on sale day. The one remaining deserved more but I snavelled him for CPL client, Matt and Amanda Cook, Minnipa S.A. for \$3,000. Bred by Pimbena 170509 (x Ramsgate 130390), the sire that did so well in our SA Sire Evaluation trial, this fella had the boldest of crimp, and super free with YWT 9.9 YSL 18.0 YCFW 21.6 YFD -1.3 & 18.1u real.

The Keller boy's **Ramsgate -Tintinara S.A.** had yet another solid Classic sale such is the ascension of this stud. EP Livestock's own Richard Hill secured Ramsgate's first for \$5,000 with trait highs of YCFW 28.7 matched by a YSL 16 add YEMD 0.6 YFAT 0.1. & MP+ 170 and bred by Sohnic 181195.

The second in the lineup at Lot 53 sold to Nantoura Poll, Wharminda S.A. for another healthy \$5,000. This fella, 200472, I raved about in Cullings'21 as potentially the best ram the stud had bred yet was for sale. He displayed a meaty and square backend that in my eyes was trait leading and a benchmark for any stud to aspire to. Nantoura can only enhance all of the



good that is going on with that ripper EP stud. Ramsgate's third was rewarded with a \$4,500 price tag and was admired by BillyAnna Park, Wudinna S.A. part due to his great skin and fibre, 19.8u 2.7sd 13.8cv 0.2pf - YCFW 24.6 YEMD 0.6 YFAT 0.2. and a PP.

Reasonably new stud on the block, **Forest Springs - Joel Joel Vic.**, have impressed many over the last few years including what has been displayed and sold well at Classic sales. A \$10,000 high at Classic'19 thrust them into the spotlight which was closely equalled at Classic'21 with an \$8,500 pickup by Ramsgate in Lot 57. Fibre supreme, FS 20023, had a good number balance of YWT 6.7 YCFW 20.2 YSL 13.7 YEMD 0.2 YFAT 0.3 and bred by Wallaloo Park 181491. Glendon Hancock, Elders St. Arnaud Vic., was on hand to secure three Forest Spring rams at \$4,000, \$3,500 & \$3,000 for Victorian clients.

Their last at Lot 59 and bred by Wallaloo Park 170198 (x Moojepin 150059) was a steal of the day and sold to quality hunter Pioneer Bend, Parndana Kangaroo Island S.A. Due in part to the Grandsire, this fella expressed YEMD 1.5 YFAT 0.9 & YWT 6.9.

The Lucernbrae - Callington S.A. team was just a bit jaw dropping displaying huge growth, extreme staple length and a light, highly fertile head makeup that set them apart from most. The first four of the seven offered were bred by that evergreen SuperSire Brookdale 014012 (x Leahcim 100858) who really left his mark with the 2021 drop, wherever he was used! Surprisingly the first only made \$2,000 - Bryan Ingram, Aston Station, Pooncarie NSW selected the ram such was his quality - a PP with YWT 11.1 putting him in the top 5% in the country and couldn't believe his luck!

Fortunately no precedent was set with the early bargain. The second and third in Lucernbrae's lineup sold to two CPL classed, quality appreciative studs with Karawatha Park, Buckleboo S.A. outlaying \$7,000 for the next Brookdale with some very acceptable numbers to backup his exceptional presence. YCFW 31.0 YSL 13.0 YFD -1.1 MP+ 173 with 18.5u 2.5sd 13.7cv & 0.4pf and a PP.

Nantoura, Wharminda S.A. queued up next and paid \$5,000 for another Brookdale PP with elite fibre and YWT 8.7 YCFW 28.0 & YSL 14.3. CPL clients Trevor and son Craig Gameau, Cummins S.A. like the Lucernbrae's and bought two out of the lineup for \$3,500 & \$2,500. The first of these at Lot 66 was bred by Leahcim 183172, a PP and looked his numbers with YWT 11.2 YEMD 0.4 YFAT 0.5 and add the typical real times from this multi trait stud at the excellent 17.3u 2.5sd 14.5cv & 0.0!!

Look again at those figures: 17.3u 2.5sd 14.5cv & 0.0 with YWT 11.2 YEMD 0.4 YFAT 0.5. A rare treat when a silky supple skin pushing out fibre exotica parallels with top carcass and growth figures.

I bought two of the Lucernbrae's for our clients Critter and Bec Freeman, Penong S.A. and Dirk and Cindy Stevens, Seymour Vic. The Freeman purchase at \$3,500 boasted more excellent numbers to backup his top end visual. Bold lustrous crimp at 18.6u with YWT 10.8 YCFW a top 5% in the nation, 32.0 and bred by that wizz kid, the now deceased SuperSire, Gunallo 170295. The Stevens purchase was bred by Wallaloo Park 180088, a PP with a typical WP induced YFD -1.5 yet YCFW 24.0 and sold at a bargainous \$2,000!

The Ridgway Advance - Bordertown S.A. (Spring Drops) began at Lot 67 through to Lot 78 such is their continued support with all Classic sales over the last two decades with huge success. No different at Classic'21 with an amazingly consistent volume lineup with their first selling for \$13,000 via Glendon Hancock's client and naturally bred by that RA SuperSire RA 160090!

Good to see the Jon and Leonie Mill's clan's, Morley Poll, Cleve S.A. at Classic'21 and more so for them find another RA 160090 progeny that was irresistible and subsequently purchased at Lot 68 for \$6,000. The poll had the outstanding realtimes of 17.3u 2.4sd 13.7cv & 0.2pf with a YFD -1.4. Similar figures and makeup with the next bloke selling to Michael Altus, Lameroo S.A. for \$5,500 and a classic representation of just how good this stud is firing!

Brian Martin, Aldinga S.A. didn't make the sale due to the fears instilled in us all with Covid but had done his research to realise that Lot 70, RA201400,

was a bloody screamer and subsequently fought off the competition to secure the best in the Spring Drops for \$9,000 via AuctionsPlus. Try these numbers to add to the attraction: 16.2u 2.6sd 15.9cv 0.0pf & YFD -1.7 YSL 13.7 YCFW 23.0. Good thing happening here considering it was Ridgway Advances' debut foray into Sheepgenetics and ASBV promotion.

As a precaution in pushing hard for early growth and carcass traits and losing fibre quality, density and micron reducing ability which is now very apparent in our industry, CPL clients, Karawatha Park, Buckleboo S.A. fought hard to secure Ridgway Advance's finest (ever at a Classic?) ram in Lot 74. An \$11,000 price tag suggests a lot of competition from silky skin/fibre aficionado's which was very much the case. Look closely at these numbers that you would never see at that other Multi Vendor S.A. sale! 15.0u 2.5sd 16.4cv 0.2pf with YFD -2.64!! All this add a reasonable balanced YCFW 20.6 and Bob's yer Uncle!

I secured the next for Thyne McGregor's Willalooka P/C, Willalooka S.A. for \$5,000 with great staple length, whiteness and density with a YCFW 30.7 and followed that up with another beauty at Lot 76 for the same dosh at 17.3u backed up with YFD -1.9 nd YCFW 20.7.

Michael and Rhyse Erickson, Murray Bridge S.A. following up at the next lot with a \$3,000 steal at 17.7u & YCFW 27.8. Dean Bourlet, Wynwood, Jugiong, NSW bought four of the next six for \$3,000 each add one at Lot 77 at \$4,000 which arguably was the pick of the crew. Bred by RA170421 (x RA130080), his nourishment was perfection and boasted some trait leading YWT 8.9 YCFW 29.9 YSL 15.7 & MP+ 172.

There's always some great side notes and discussions involving any merino ram sale. The advertised sale start time at any Classic sale is 1.30pm with an open to inspection time at 10am. Should the punter/purchaser be running late, register, catch up with a few mate before inspection, in my eyes it then becomes realistically impossible to inspect near on 100 rams and get it right for potential, important purchasing - the reason one is at the sale in the first place! I encourage everyone to be there as close to the inspection time as possible as not to let the potential purchase slip through one's fingers due to not enough homework!

The reason for the segway is a lot to do with the Lot 79 purchase for \$4,500 from the Mitchell family's pickup of **Challara Poll - Badgingarra W.A.** Andrew Mitchell was never going to get to Classic'21 yet relied on visual perspectives from a trusted few on the day aided by some of the best grouped ASBV's in the catalogue of which he had studied prior to the day.



This ball tearer of a sire (see above), bred by Baderloo 140395, excelled in the wool/carcass department and was backed up possibly some of the days best numbers: YWT 11.6 YEMD 1.5 YFAT 0.9 YCFW 25.0 YSL 16.8 and exhibited an arse like Venus! This ram was missed by many as sitting at Lot 79 suggests due to potential purchaser time management issues! Disappointingly, Challara's second was withdrawn from sale due to internal health issues and missed the sale.

Sohnic Poll - Marnoo Vic. regularly fascinate the general merino public with their super aligned, bold crimped elite fibre and outstanding realtime figures add the regular carcass enjoyment. Those realtimes will be added to the SheepGenetics data base this year to complete the picture that we all annually yearn - won't they Scott!!

The stud had yet another humungous day which was capped off by a \$30,000 offer and subsequent pickup by Superior Wool Syndicate and semen shares to Nantoura and Calcookara Poll studs for a young Reserve in the display pens adjacent to the Classic Marquee with the boldest crimp ever witnessed by man & ape! (See below)



The Keller boy's Ramsgate Poll like the Sohnic's as much as me and were quick to make sure that they bought the first for \$8,000 due to the lure of his square backend, long body, outlook and silky fibre as we're all accustomed. Glendon Hancock secured the next ripper for \$4,500 with 18.8u 2.7sd 14.4cv & 0.2 and bred by Ramsgate 170076.

CPL clients, James, Sonya and Jamo Irwin's, Balah Nominees, Morgan S.A., outlaid the same dosh for the next, a brilliantly fibred Wallaloo Park 181491 fella with a great square backend. I bought the next for CPL clients, Matt and Amanda Cook, Minnipa S.A. for yet another \$4,500 that should have made \$10,000 such was this ram's breeding potential! Still, I always say that!

Richard Harkness' **Superior Wool Merino - Tintinara S.A.** had his best ever Classic day out grossing \$13,000 for the two excellent polls entered. The first selling to the Aaron Freeman managed, Colara Farms, Colebatch S.A. for \$8,000 and to be used as a home ram breeder as to maintain this tremendous flock owned by the Munro family.

Bred by Wallaloo Park 180088 (x WP150422) and a PP, this fella was one of the best the stud had ever produced and sold to these long time supporters. Try these Rex: 17.4u 2.9sd 16.6cv 0.2pf with YCFW 23.0 YSL 12.7 & YFD -1.6 as a good balanced set of numbers without risky extremities.

Rob Germein, Port Vincent S.A. was there to pickup the next of the two for a cool \$5,000, a PP with great carcass aided by YCFW 25.0, YSL 12.1 and bred by that SuperSire, Gunallo 170295 hence the better than average fleece weight yet free enough with YSL at 12.1.

Brenton and Penny Kroehn's, **Borong Poll - Waikerie S.A.** was bold enough to put a reserve on their number one entry for Classic'21 and rightly so such was the ram's stature. The \$8,000 reserve was never actually met yet the \$6,000 offered was a testament to just how good this bloke was including a rich lustrous fibre add YFD -1.4. Aston Station, Pooncarie NSW secured the next for \$3,000 but I have a feeling that Classic'22 will see the ultimate success and reward for entering such high calibre genetics.

Some of the Classic'21 sale's consistent across sale team numbers wasn't quite enough to get **Hynam Poll, Longwood Vic.** over the line with the rewarding spondoolee the stud deserved on the day. Recent viewings at Pimbena Poll and Calcookara itself sees enormous results from the excellent genetics this stud provides.

Two Calcookara 170400 bred sons led the Hynam lineup with the first selling at \$2,000 and heading back to Victoria via a Glendon Hancock client with the great ASBV's of YWT 8.0 YCFW 26.1 & YFD -1.5 and covered in the good gear. Better luck with the next fella at Lot 90 and pushing out white silk and selling to Michael and Rhys Erickson, Murray Bridge S.A. for \$3,500 with an outstanding cache of figures: 17.7u 2.8sd 15.4cv 0.4pf with YWT 11.9 YCFW 23.4 YFD -2.0 MP+ 173 add PP.

Dean Pearson, the Lord of Brinkley S.A. couldn't believe his fortune for the next Hynam for \$2,000 exuding great staple length backed up with YSL 15.4 with a YWT 8.9. Brenton and Jane Smith's, Calcookara, Cowell S.A. were after a few rams throughout the sale and the job was made easier due to some diligent homework and flusing an amazing \$2,000 pickup with whiteness and YCFW 26.0 & YSL 12.5.

I was approached by Simon Coutts of Willera - Serpentine Vic. mid year to discuss the stud's potential inclusion for Classic'21 which culminated in an entry of two polls from the stud. They received a lot of interest due to Willera's debut as well as their trait leading numbers particularly surrounding carcass and growth. No Classic sale has had inclusions with such high ASBV's.

The first at Lot 94, Wiilera 200459 (x Moojepin 160003) was a thumper with a glaring obvious meat trait advantage reflected by national top 1% traits of YEMD 3.3 YFAT 2.3 & YSL 28.3 and supported by a handy YCFW 26.0 and a PP. The Horton family's Glenwarra Poll, Nyngan NSW took the worthy bait and outlaid \$12,000 for this pen filler.

CPL classing clients, the Evans Family, Wunkar S.A. have had enormous impact within their flock via a Mumblebone purchase around five years ago so it was a natural progression to be tempted by a ram as to maintain the good work that sire did, once again with good meat traits and reasonable fibre. They secured Lot 95 for \$11,000 with a superb backend loaded with meat with a YEMD 2.2. YFAT 0.7 and a top 1% nationally, YSL 20.8. Good realtimes of 19.6u 2.8sd 14.2cv & 0.0pf just lets you know that a balance amongst all traits can be achieved albeit YFD 0.0.

There's always a good story associated with any Classic sale and the debut from Scott, Odile, Jim and Ash Welke's, Westwood Poll - Cascade W.A. was yet another. It's taken Scott in particular quite a few years to get his head around that entering a team in to any Classic was ever a good logistical idea!

At selection on property in August I was wrapped in what was on hand to fill the Esperance sale team and at last had my way in getting three ripper Westwoods into Classic'21 after a few good cognacs after dinner one night after a full day's classing! All three PP rams were bred by Leahcim 182185 (Classic'19, \$14,000) and all coated with a consistent bold, lustrous crimp, low micron, extreme staple length on good shapes.

The first sold to locals, Michael and Rhyse Erickson for \$7,500 with YWT 9.0 YCFW 32.0 YEMD 0.4 YFAT 0.5 YFD -1.3 & MP+ 178 at 17.6u the second to Bevan and Cindy Siviour, Cowell S.A. for \$5,500 with YWT 8.5 YCFW 25.0 YSL 12.5 YEMD 0.4 YFD -1.4 & 18.5u. The third and last for the entire sale appealed to Nantoura Poll, Wharminda S.A. with his ultra bold 56's types crimp frequency for \$6,000 with a YWT 10.0 YCFW 22.0 YSL 14.0 at 17.6u.

No show without a multitude of things falling into place with the setting up and organising any Classic sale. This made so much easier thanks to the fantastic support from the day's sponsors.

I must mention Fox & Lillie, Dutton Motors, Thomas Foods International, BreedElite, Mobishear, Commander AgQuip, Rod's Stock Blocks, Spanlift, Ramsey Bros., Miegel Engineering, Compass Feeds, Allflex and Pandy Films.



Classic Sponsor



Another Classic Classings Classic

Classings P/L appreciate the support of all stud entries, sponsors, underbidders, purchasers, agents, service providers and the patient desk crew in making Classic'21 yet another Classic!

	OFFERED	SOLD	TOP	AVERAGE		OFFERED	SOLD	TOP	AVERAGE
Mernowie	1	1	\$20,000	\$20,000	Borong	2	2	\$8000	\$5500
Wallaloo Park	4	4	\$15,000	\$11,750	Sohnic	4	4	\$8000	\$5375
Leahcim	2	2	\$17,000	\$11,750	Ramsgate	3	3	\$5000	\$4833
Willera	2	2	\$12,000	\$11,500	Challara	1	1	\$4500	\$4500
Gunallo	8	8	\$19,000	\$8250	Forest Springs	3	3	\$8500	\$4300
Ridgway Advance	12	12	\$16,500	\$6583	Flairdale	2	2	\$4000	\$4000
SWM	2	2	\$8000	\$6500	Lucernbrae	7	7	\$7000	\$3643
Westwood	3	3	\$7500	\$6333	Ridgway	13	10	\$6000	\$3400
Ridgway Advance	12	12	\$13,000	\$5917	Lone Gum	4	4	\$4000	\$3250
Spring Drop					Pimbena	1	1	\$3000	\$3000
Nantoura	3	3	\$7000	\$5500	Hynam Poll	4	4	\$3500	\$2375



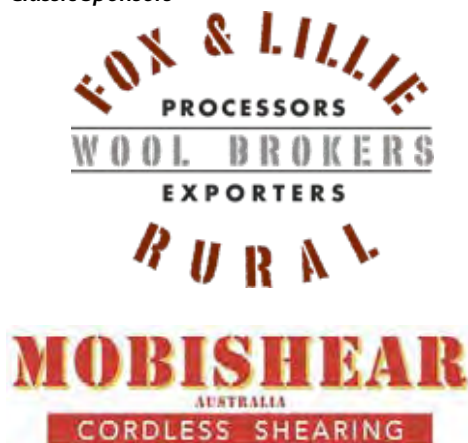
AUSTRALIA'S wool auction market has forged higher for a fourth consecutive week, led by higher prices for 18-18.5 micron fleece and premiums of up to 250c/kg for non-mulesed lines. AWEX said selected specialty non-mulesed types continue to attract very strong competition and in this series recorded premiums of up to 250 cents when compared to wool of similar type and specification.

- SHEEP CENTRAL 20th May 2022

CLASSINGS CLASSIC RAM SALE SUMMARIES SINCE 2002

YEAR	OFFERED/SOLD	TOP	STUD	OVERALL AVERAGE
2002	39/38	\$8,000	SOUTHROSE	\$1,398
2003	58/55	\$6,400	GLENLEA PARK	\$1,365
2004	66/60	\$9,000	FLAIRDALE	\$2,236
2005	102/87	\$8,250	WALLADALE	\$2,031
2006	115/105	\$25,500	LEAHCIM	\$2,554
2007	100/95	\$11,000	GLENLEA PARK	\$2,598
2008	116/108	\$39,000	GLENLEA PARK	\$3,149
2009	143/102	\$17,000	RICE'S CREEK	\$3,131
2010	116/108	\$30,000	MERNOWIE	\$3,717
2011	96/95	\$32,000	RIDGWAY	\$4,874
2012	113/103	\$10,500	RIDGWAY ADVANCE	\$3,103
2013	97/87	\$51,000	GLENLEA PARK	\$3,790
2014	85/75	\$18,000	GUNALLO	\$3,208
2015	56/54	\$30,000	GUNALLO	\$4,568
2016	82/81	\$16,000	GUNALLO	\$4,489
2017	71/67	\$21,000	WHITE RIVER	\$5,142
2018	84/81	\$60,000	GUNALLO	\$5,155
2019	83/82	\$20,000	GUNALLO	\$5,136
2020	96/92	\$24,000	GUNALLO	\$5,442
2021	95/91	\$20,000	MERNOWIE	\$5,896

Classic Sponsors





PIMBENA

POLL MERINO STUD

POLL FLOCK NO: 601048

ON-PROPERTY SALE

WEDNESDAY, 27TH JULY 2022, 1.30PM **70 RAMS**

Joined Sheep Genetics in 2003 OJD Injected from 2006 Non Mulesing from 2007 All Sires DNA Tested

LESLIE HAMENCE

Phone / Fax : 08 8626 8002 Mobile : 0428 268 002 Email: pimbena@bigpond.com

WWW.PIMBENAPOLLMERINOS.COM.AU



ON-PROPERTY RAM SALE

Monday 15th August 2022

CLASSINGS CLASSIC RAM SALE

Monday 5th September 2022

15 years mules free



**Brucellosis
Free Accredited**



**NEW SALE DATE
15TH AUGUST**

**EARLY GROWTH
DUAL PURPOSE
LONG STAPLED
FREE GROWING
SOFT WHITE
CRIMPY WOOLS**

WAYNE LEHMANN
0408 896 877

MATT LEHMANN
0417 843 063

www.flairdale.com

flairdale@internode.on.net



Established 1870
Stud No:18 Poll Stud No:1635

Caroonboon Merinos

over 150 years of breeding excellence

*Trait leader for meat and wool
SA Sire Evaluation 2020*



**Will be in attendance at the
Australian Wool and Sheep Show
Bendigo Vic 15th July - 17th July 2022**



Annual on Property Sale

75 rams

Sale Date: Friday 9th Sept 2022

Inspections: from 10.30am

Sale commences: 12.30pm

Location: Caroonboon Station

Moulamein Road, Wanganella NSW

Contact:

Stud Principals: Margie Pye 0427 996 911
margiep01@bigpond.com
Sandy Pye 0448 232 569
sandy@calga.com.au
Studmaster: Ian Lilburne 0428 505 252
Caroonboon Station Manager:
John Stephens 0429 930 692
john@calga.com.au

Facebook: Caroonboon Merinos caroonboonmerinos :Instagram

calga.com.au

Principal: BJ & TE Dean
96 Frampton Road, Joel Joel, VIC 3384
Flock No. 1465 - Poll Merino Stud
Phone: (03) 5356 9147
Mobile: 0407 054 342
Email: brucedean@bigpond.com
Brucellosis Accredited &
Approved OJD Vaccinates



forestspringsmerinos



Bruce Dean

We welcome you to Forest Springs Merino Stud

Breeding Objectives: We are producing a robust, good doing sheep that has the ability to grow a heavy cutting, bold crimping, richly nourished wools while maintaining an excellent carcass and highly fertile sheep, able to thrive in any environment and any seasonal conditions.



2022 Sale and Display Diary

Bendigo Sheep and Wool Show - July 15th - 17th

Hamilton Sheepvention - August 1st - 2nd

Victorian State Merino Field Day - Marnoo, August 15th

Classings Classic Ram Sale, Murray Bridge - September 5th

Pre Sale Inspection Day - On Property

Friday September 9th, 2022

9th Annual On property Ram Sale

Thursday September 15th, 2022



46th Annual On Property Auction

Quality rams at affordable prices

80 RAMS ON OFFER

Rams May/ June drop 2021.
All current ASBV data on display.

Inspection from 11am
Lunch provided from 12 midday.
3% rebate offered to outside agents.



Wednesday 31st August, 1.00pm



Brenton & Penny Kroehn

9km south of Waikerie,
Maggea Road

Brenton: 0427 414 494

Email: bkroehn@hotmail.com



Simon Seppelt 0408 707 907
David Whittenbury 0455 600 488



CALCOOKARA

POLL MERINO STUD

Est. 1912



Semen Sire
170400

\$82,500 worth of
progeny sold at the
2021 Classing Classic
Ram Sale



Annual On Property Ram Sale
Thursday 18th August 2022 @ 1:30pm
120 rams offered, inspection from 11am

Pre Sale Inspection Day Thursday 11th August from 1pm to 4pm

Brenton & Jane Smith
1491 Ferns Road, Cowell SA 5602
Phone: (08) 86 285 039 or 0427 285 039

E: info@calcookara.com.au
W: calcookara.com
FB: @calcookara

In the Classing Race with Darren O'Brien, Peter O'Brien and the Classer ...



All classings days wherever I am and at whatever level are always fascinating with this Darren O'Brien story yet another to the pile. Coming across stats like this certainly complement the visual part of the job and will keep me going until I drop off the perch ... or the classing race rail!

"We had an interesting happening at the first stage classing of the 2021 Drop Rams, March 9th this year.

About five rams into the day's classing, Bill starts to get excited as he does, when young ram 210788 wanders through the classing box.

A quick check in Pedigree Master and bugger me dead, it's the same ram that is our top DP+ index of the entire 21 drop males, therefore first on the list. I had been looking forward to finding this ram since genomics had been added to our ASVB's.

He was sired by Obrien 191035 (x Ridgway 170443), a ram we chose to put a reserve on at Classic'20 yet brought him home, but that is not the interesting part.

It's his mother, 190370 that had AAA's, which is the top of the tree with my recorded comments guide to what I think of the sheep visually. Add to this and when looking back on her Classings Lab results, Bill's visual wool test comments included three asterisks and the word 'pick'!

She had lambed twins as a ewe lamb raised and raised one. That ewe, 201058 a PP, recorded a AAA from me and couple of wool stars in her comment box from Classings Lab. So kept going back into 190370's pedigree to her mother, 170804. She also had a heap of A's in her comment box and a note to find her lamb. that 20 drop ewe lamb had A's a plenty and Classings Lab stars.

Back to the Classing race ... About five rams from the end of the mob I see Bill getting excited again, his phone out taking backend and wool shots and me on mine so that I scan and check Pedigree Master, and it's a bloody twin of the first ram we started out on, this one 210889 may be better!!

Bill and I both look forward to watching the progress of this pair of twin rams.

All to the power of data, genomics, visual selection, record keeping and being able to find and use those records. May we keep getting better at it!"

*Mamblin Pastoral - O'Brien Poll
Darren O'Brien and Jodie Reseigh-O'Brien*



**O'Brien Dohne Merino
O'Brien Poll Merino**

Annual Sale

**Thursday 28th July 2022 @ 1pm
Wudinna Show Grounds**

160 rams

*Poll Merino and Dohne Merino flocks
in Merino select analysis*

www.obrienmerino.com

Contact: Darren 0419 772 173

A LETTER FROM PETER ANDRE: 'CERES' 'GILLAP' KANGAROO INN S.A.



THE DESIGN & SHEARING OF QUALITY FIBRE ...

"Merino wool has always been an important part of our operation. Up until 10 years ago, we used to crutch all our sheep twice a year, then Nov/Dec shear. This was a pretty simple operation, some of the younger sheep go over 120mm of length in good seasons. The staple strength would depend upon the time and type of seasonal break. We would average 19 micron in the hoggets, and 21/22 micron in the adult sheep. Staple strength varied from 25 to 40 um.

We then moved into shearing every 6 months, which consisted of an Autumn shear and a spring crutch on any stained sheep then a spring shear. We had been challenged by lice, this system enabled a good lice treatment on the Autumn which gave good control in the future lambs. It also reduced cast ewes through lambing, increase in staple strength, increase in the yield of the spring wool and it also helped reduce fly blown sheep in the spring. However, the Autumn shear particularly the older sheep we struggled to

reach combing length. Consequently we have gone back to an annual shear in the ewes as of 3 years ago.

Out hoggets and weathers we shear every 8 months and crutch once, sometimes a second crutch is needed pre shear.

5 years ago we stopped mulesing. At lamb marking we use click for fly control, and weening we use click on the back. Not mulesing has given us new marketing options for our wool. Through AWN we have become part of the New Zealand ZQ and ZQRX programs and also enabled RWS certification. Rob Williams and Kelvin Shelley look after the selling of our wool, whether it is through the ZQ contract system or at Auction. Kelvin Shelly would've started working on selling the wools in the M46 sale, 8 weeks prior. He put a huge amount of effort and time into that sale, we are extremely grateful to have the help pf Kelvin and Rob.

We are also very lucky to have had Bill to do our hogget classing and set realistic goals to achieve the type of wool we are now growing. Bill is responsible for sourcing our rams, which used to come from the Willalooka Stud and more recent year the Lorelmo Stud. Both have an incredible style of wool which is extremely true to type with a very low CV on a highly fertile sheep.

For the future we will continue with our non mulesing and current shearing program. Hopefully it is not too far away when we are producing a longer staple and will be able to go back to bi-annual shearing of the ewes, enabling us to be producing 16-19 micron wools, at 80mm length with textile strength above 40Nkt. Bill's guidance and association for many years to come will be an essential part of this. Hopefully not too many more towing Bill out of our garden at 5:00am!

None of this would unfold without the help and support from my wife Tweet and 4 kids Sophie, Will, Grace and Fred. The encouragement from Dad and Mum is also much appreciated. We are very lucky to have Liam and John working with us through the year to produce the wool we do."

Cheers, Peter Andre.



SALE PRICE ADVICE

Account : J & M ANDRE & CO		Reference : 102729 002		Sale : M46P	
Brand : GILLAP		Account : 102729		Sale Date : 17/05/22	
Phone : 08 8734 3043		Branch : Robert Williams		Proceeds Due : 27/05/22	
Mobile : 0409 862 664		Salesperson : Robert Williams(0448 484176)		Run Date : 17/05/22	
Fax : 08 8734 3006		ABN : 98 350 198 511			

Lot Ref	Description	No of Bales	Net Wgt	Clean Wgt	Fibre Diameter				VM SCH DRY	Staple				Position of Break			AWEX ID	Grwr Rav	Curr Appr		Sale Price		Gross Proceeds	
					Mic	CV%	COM	CUR		Lgth	CV%	Str	SS25	Haut	CVH	Tip			Mid	Base	Greasy	Clean		Greasy
1305	AAAM	12	2294	1789	15.9	18.4	89.8	83	.4	76.0	85	1.3	40	25	65	52.7	91	9	MF3E	2600	3333	2700	3462	
1306	AAAM	10	1917	1507	16.1	18.9	89.8	58	.3	79.8	84	1.9	50	32	72	44.7	11	65	MF3E	2585	3289	2729	3472	
1307	AAAM	6	774	581	15.9	20.1	89.8	59	.3	75.0	87	1.3	46	28	89	48.9	10	7N	12	MF4E	2625	3500	2600	3467



I would like to take full credit on the look of Challara Poll Merino Stud WA, but that accolade goes to the late Jim Watts who set this stud up in part, leading to its success today. My tenure of around six years only needs to maintain many facets of what was put in place years ago as to ensure the stud's future successes.

Chumpy, well setup backends with some of the longest staple length in the biz tangled with elite fibre, Pete Wilkinson is in total command! AWN Livestock's, Greg Wootton is of equal importance and a massive promoter of the Challara genetic.

The stud's own homebred sires, lead the way yet a small intrusion from Mumblebone 191150

may have instigated a slight directional change recently.

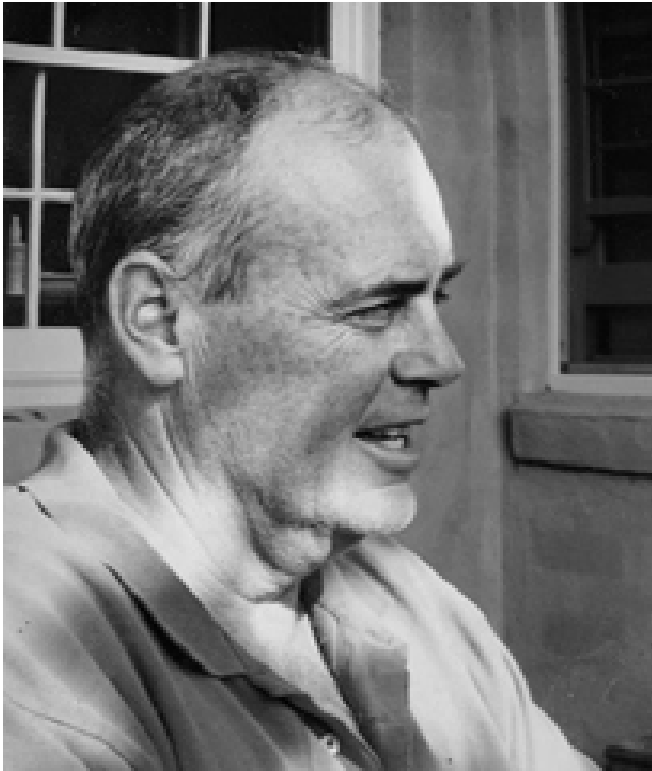
The narrowed down 230 young ram group looked sensational at days end capped off with a viewing of last years excellent ET ewe arsenal!

All stud ewes will potentially be DNA genomically tested this year as to lift and boost the accuracies of an already ASBV savvy flock.

The complete package exists at Challara - growth, fleece density, staple length, unmulesed, softness and confirmation plusses suggest a true Dual Purpose item, a loose term used by many studs that quite simply, aren't!! 18.3.22

JIM GORDON CORNER

A WORD ON SOME PLAGUES OF THE INDUSTRY



Once again I would like to thank Bill and Rose Walker once again for the opportunity to present an opinion piece in Cullings'22, this annual is a must read.

I dearly hope some of you get good information from this article to help in your breeding program and as always I am trying to make you think and question all information. It is critical we turn the declining number of merino breeders and merinos around. We have got to make it easier to maintain a merino flock and to produce what the market wants.

I would like to acknowledge the late Jim Watts, and Neville Jackson, two of the greatest research scientists that Australia has produced. Both were part of a world class CSRIO research team back in the 70's, 80's and 90's, and to Paul Swan who came in at the tail end of that world class team.

Paul has always given of his time to me in person, and also with response to emails and phone calls. A very intelligent man with a very complicated subject being able to simplify and explain to the rank and file practical sheep producer! Paul is a real asset to the sheep industry and I am proud to be able to call him a friend.

THE MAIN DESTROYER IN THE SHEEP INDUSTRY - HARD COLLAGEN

I suspect hard collagen is tied in with tough meat, and it makes the ability to grow quality wool, a lot more difficult and hinders the desire to capture feed efficiency.

MAGGOTS

Without the hard wrinkle caused by hard collagen in the skin, we could fly proof the Australian sheep flock - make *Lucilia Cuprina* extinct. What a project for our peak body AWI, to get 100 percent behind the production of sheep that don't attract flies!

This blowfly has caused millions upon millions of lost dollars, cruelty beyond belief for the sheep and shearers as well as heartache and extra work for humans dealing with flyblown sheep, and spending time putting preventative chemicals on. We run the risk that chemicals end up in the blood stream and then into the meat, humans consume that meat, then a

good chance of cancer for the humans. When you are trying to kill stuff, we as humans are in the firing line as well.

Why not have sheep that don't get flyblown so don't need chemical treatments. Is it possible of Every farm in Australia that runs sheep, have some that never get flyblown. Why not have the whole flock genetically fly proof?

The reason sheep get flyblown is because of the hard collagen in the skin. When the wool follicles are being formed, if hard collagen is present, the skin will wrinkle up into permanent wrinkles. If no hard collagen is present, the same sheep with the same number of follicles will have no skin wrinkle - no need for mulesing, shearers are happy and no flies. You would have to consider breeding the hard collagen out of your flock.

When the ground temperature rises above 20 degrees celsius it is the trigger point to hatch out last year's maggots that have buried themselves in the ground at season's end. When residual moisture is left in the valleys of these wrinkles, the moisture becomes stagnant, bacteria grows, giving off a pungent smell which attracts *Lucilia Cuprina*.

Surplus suint (sweat) doesn't help. Keep your wools as white as possible. Large primary follicles carry large sweat glands. Problems. Joseph's Technicolour coat and flies in a wet year. Yellow wool in a dry year. Yellow wool won't completely scour out so the processor finds it difficult to supply a white fabric.

Try and breed from rams with supple skins. Not skins that roll on their body but skins that you can roll in your fingers, that it doesn't hurt the sheep when you do it. The hard collagen tends to rap around the nerve channels, these visible lines are called Dermatomes. You can feel them if hard collagen is present. When you run your fingers along the back of the sheep a couple of inches down from the backbone you feel the hard cord, keep walking, leave that ram in it's pen. The abattoirs can have him. The hard collagen being close to the nerves will hurt the sheep when you feel the skin and to shear (kick). Wrinkly lambs are fine as long as they have soft pliable skins - they will grow into their excess skin.

People blame sheep for being wild or having a bad temperament but it can be just that every time humans touch them you cause pain.

WOOL CUT

Hard collagen has very little to do with clean fleece weight. CFW comes mostly from what goes down their throat.

Micron, (a 12% increase on each rise of one micron approx), Density, (number of fibres per sqmm) and length of wool.

Also what percentage of the genetic package is allocated to wool production. As you bring in fertility and meat you tend to loose wool cut, however with more lambs you have their wool as well!

Don't just go with one of these. It has to be a combination. If you have a lot of hard collagen in the skin it tends to slow the growth of wool per month down, (difficult for the blood supply to get through to the follicle bulb) and hard collagen can cause disruptions to the developing follicles. They get pushed around by the hard collagen so they develop in different directions. It is more difficult to get well aligned wool that the processors so dearly desires if hard collagen is present.

TENDER MEAT

Remember at the start of this opinion piece, I said I am trying to make you think and question everything. We seem to want a machine to do it for us, as in Shear Force, when all we have to do is get the hard collagen out and this will solve multiple problems. Bill Walker has been trying to do this for 30

years and has been belted all the way.

The thing that makes meat tough is connective tissue. Where does connective tissue come from. Hard Collagen! If you hang meat for a week it will weaken the connective tissue's bonds. We need to breed animals with less connective tissue.

The hard collagen fibrils that occupy the skin also seem to drift down into the meat. They are bastards, they bind to everything they can get their hands on. Top sports people have binding collagen. Kangaroos etc. Dense meat, people chasing max weight gain. You can't eat the stuff.

Ask all the old cattleman, they will tell you, if you want a good eating beast, kill one with a soft supple skin. (No hard collagen). Have a look at the good cattle judges in the ring and you will see them feeling the skin behind the shoulder. They are feeling for softness, suppleness and how the animal behaves. They will knock out the cattle with the hard stiff skins and mostly these cattle won't stand still anyway because of the irritation. The old cattleman will say to you every time. "Keep your cattle soft". Sadly eating quality was important but now its weight gain/dollars.

QUALITY WOOL

In utero, as the foetus grows, it gets to a point at 60 days when the first follicles start to form, called Primary follicles. Then at 80 days the Secondary Original follicles start to form and at 110 days the Secondary Derived follicles start to branch off the P and SO follicles.

Remember the follicle is the outside wall, the outside case, like a long thin plastic cup in the skin. The fibre develops inside the follicle at the base of the follicle, being produced by dividing cells called the follicle bulb cells. You can have follicles with no fibres and follicles with up to twenty five fibres coming out of a single follicle.

This is critical because some sheep have follicles that stop production of fibres as they get older. If you want lifetime wool cut these sheep are a disaster.

This is what is going on in humans that go bald. They still have all their follicles but no fibres.

How does hard collagen destroy wool quality.

When all these follicles are forming the hard collagen is distorting, pushing them around, causing the follicles to develop in all different directions. Hence the fibres emerge from the skin surface growing in all different directions. (Tangled wool). What we want is all the follicles lined up in an orderly fashion so all the fibres come out of the skin aligned. They are easier to shear, Bill W will identify less culls, the wool processor will be happier, and the big one, these sheep will dry out quicker so ... no flies.

FEED EFFICIENCY

This is one of the big untapped sleepers in the sheep industry. Recently Bill W has talked about merino ewes that do it all. More lambs, more wool, more meat and are in good order. What have these sheep got that the bad performing sheep have not. Better feed conversion or just to be able to direct more energy to meat, wool, and fertility and not waste energy in other areas. Have they a more efficient engine?

This subject is all about Nutritional intake into Energy, how and where is that energy distributed.

The big heavy skins full of hard collagen can take an enormous amount of energy to maintai.

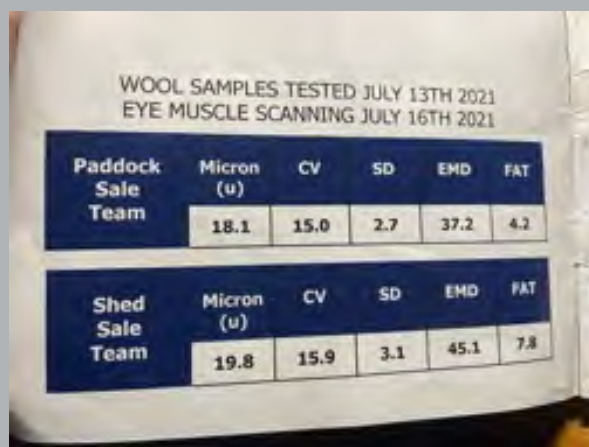
Think about the old days, carrying around a big heavy woollen overcoat and now days a light puffer with a next to skin light woollen singlet. Just as warm. That ewe carrying that heavy skin in SA's 48 degrees heat - most of the available energy is used trying to keep her cool, consequently less pregnancies.

In my opinion, in your breeding program, work towards a supple skin, no hard collagen. Hard collagen is a genetic fault in sheep that merino breeders have introduced over a very long period of time to produce more greasy fleece weight. I think the the problems far outweigh any benefits, what ever they may be.

Chasing greasy fleece weight will give you more hard collagen, less lambs, shearers demise, more chemical use, more flies and more colour etc, the problems never stop.

People say to me, but even crossbreds get flyblown. True, yet where do they come from? Cull merino ewes often loaded with the main topic of this piece, collagen!

EMD/FAT COMPARISON SWM MARGIN



WOOL SAMPLES TESTED JULY 13TH 2021
EYE MUSCLE SCANNING JULY 16TH 2021

Paddock Sale Team	Micron (u)	CV	SD	EMD	FAT
	18.1	15.0	2.7	37.2	4.2

Shed Sale Team	Micron (u)	CV	SD	EMD	FAT
	19.8	15.9	3.1	45.1	7.8

Within the same stud and across similar sire progeny groups there's no surprise how tucker can affect physical/realtime EMD & FAT measurement.

Note the paddock prepared ram's EMD/FAT measurement compared to the shedded variety in the above photographed table from a sale catalogue in 2021. Same genetics, different feed regimes and nothing scientific about it.

The top EMD/FAT measurement from a ram in that sale that was shedded was EMD 49mm/FAT 8mm and another, EMD 45mm/FAT 9mm.

The highest numbers for a couple of rams from the paddock, from that same sale was EMD 41.5mm/FAT 4.5mm or another, EMD 39mm/FAT 5.5mm.

A big yet excusable difference between the two due to the very obvious, protein!

This is why SheepGenetics and the creation of ASBV's, generated from a national database full of millions of records now, is our only leveller in deciphering different feed regimes.

Any Classic sale and all multi vendor sale are full of differences in dietary regimes making it impossible to gauge what's 'big and what's not!'

ASBV's are the most sophisticated and only system we will ever need to evaluate all merino stock from dissimilar nutritional and breeding backgrounds across the nation. The more info submitted, the higher the accuracy and subsequently the ability to forecast/predict those traits required to push any flock to new heights. Just make sure that backend is square Bobby Joe!

SUSTAINABILITY, ETHICS & BEST PRACTICE

By Joe Keynes, Livestock SA



I classed the Keyneton Station flock a couple of weeks ago and as per usual Joe, Sal and Georgie Keynes and I covered most topics over a day's classing including the ever lasting Mulesing discussion. Despite breeding and a change in genetics being the most singular and only way to arrive at that final destination in a hurry, what Joe suggests in the following screed and subsequent AWI workshop rollouts, will be the likely direction taken by most who aren't game to offend their stud master! I appreciate the piece Joe ...

"During a recent conversation with Bill while classing our ewe hoggets, we talked about the importance of employing good animal welfare practices. He asked me to put my thoughts on paper.

Wool Producers Australia and Livestock SA have policy positions to mandate the use of analgesia/ anaesthetic when mulesing. Our industry maintains the highest animal welfare standards. The administration of analgesic and/ or anaesthetic products when mulesing ensures we continue to maintain those standards. It's an easy practice to implement and mandating sends a positive message to the wool market.

Mulesing will continue to be in the animal welfare spotlight so individual businesses will have to consider their position on the practice. Australian Wool Innovation's (AWI) current strategic plan ('Wool 2030') has many goals and strategies. Under Pillar 1: Caring for our animals and the environment, one of the five key strategies is to 'Protect our sheep against

flystrike'. The action to realise this strategy is to 'Develop tools and systems so that growers have the confidence and the capacity to manage flystrike without mulesing'.

There are still barriers to the adoption of the strategy, including general price signals, environmental factors and marketing sheep off shears, so we have some work to do to realise what is the right strategy.

For the many producers that have successfully moved to non-mulesed operations, there are retailers that only purchase non-mulesed fibre, supported by QA programs, that deliver premiums to producers.

I congratulate AWI on developing a range of workshops and tools that will increase the confidence of producers to transition to a 'cease mulesed' flock. The Flystrike Extension Program designed to support woolgrowers improve the lifetime welfare of their sheep, reduce their reliance on mulesing and crutching, optimise chemical use and increase whole farm profitability is detailed in the current *Beyond the Bale* (June 2022) magazine.

As these modules roll out over the next year, they should be oversubscribed with producers evaluating the challenge of going non mulesed. We need to attend with a positive 'can do' attitude.

It is also time that our prime lamb production systems started to move to non-mulesed dams. The processors, exporters and retail outlets could leverage this change as part of a positive marketing program. Currently non mulesed merino first cross ewes attract a significant discount in the market, so it lacks the price signals required to encourage moving to non-mulesed sheep.

As businesses operating in a highly competitive global market, we must make the serious decision about the future practices we will adopt to manage fly strike in wool producing sheep. The worst outcome would be if producers going non-mulesed, move to sheep that don't grow wool.

Unquestionably, we produce the best fibre in the world. But as the demand for sustainable and ethical wool continues to grow, we must ensure it is also produced with the best practices in the world if we want to maintain that reputation."

Joe Keynes.

PEPPER WELL POLL MERINOS

ON PROPERTY AUCTION 1.00PM FRIDAY 2nd SEPTEMBER 2022

60 JULY 2021 DROP RAMS



- AVG 100 DAY WWT 39KG
- GRASS FED
- UNHOUSED
- NO FOOT TRIMMING
- ASBV's
- VERY FERTILE
- GOOD DOING
- LARGE FRAMED
- EARLY GROWERS
- UNMULESED
- LONG BOLD, DEEP CRIMPING WOOL
- MATURE EWES 19 MICRON
- BRUCELLOSIS FREE
- OJD VAC SINCE 2006
- PFC 350 OJD FREE

Pepperwell, 84 North Rhine Road, KEYNETON SA—1km North of Township

For more details contact Hans Graetz MOB: 0427 790 676 EM: pepperwell1@gmail.com



POTENTIAL RISKS TO OUR INDUSTRY - BIOSECURITY: A NATIONAL CONCERN By Glen Tilley - WoolProducers



I classed the Glen Tilley flock near Kapunda S.A. for close to a decade before his slowing up the pace, semi-retirement, to concentrate on a list of other passions! I thank him for this piece as a reminder that we live in the greatest and safest country on the planet yet need to be reminded of the ways and means of keeping it safely that way ...

"Having been a Board member of Livestock SA and more recently a director of WoolProducers Australia I have certainly gained a greater appreciation and awareness of industry issues. These are not new issues in many cases, but the need for industry action is more apparent.

The high standards that we have will be further challenged as overseas markets demand sustainably produced products, including high animal welfare standards and best practice environmental management.

Biosecurity is at the forefront of industry issues. Recent detection of exotic diseases Lumpy Skin Disease (LSD) and Foot and Mouth Disease (FMD) in our nearest overseas neighbour Indonesia are of great concern.

These diseases have been on the radar for a number of years and we have been warned of the potential dangers. Having been aware of them but not having cases can lead to the belief that we are safe, and it won't happen to us. We are an isolated continent.

Over the past 12 months a number of meetings I have attended have dispelled that opinion. The advent of COVID has given us a massive wakeup in the ease of spreading infections and the massive impact it had in all facets of our lives. In the early days of COVID many of us would have thought.... it will be over in a few months....and it won't happen to us. How wrong we were.

Biosecurity for the Livestock industry is in a similar position, with two exotic diseases at our doorstep. Experts in disease control were quoting a 9% chance of FMD getting into Australia in the next 5 years. This was before the Indonesia outbreak. Odds that are way too high.

The volume and diversity of travel and trade transactions are far greater than years gone by and the "it will never happen to us" theory is truly over. It's no longer a case of IF it will happen, but WHEN it will. ABARES recently updated the estimated cost of a large multi-state FMD outbreak and advised it would have a direct economic impact of around \$80 billion.

Recent experience in South Africa saw the situation where wool on ships was not allowed entry into China. The shutoff was immediate. They ceased trade with the whole country, not just specific regions where the outbreaks were being detected. No doubt sheepmeat products were restricted in a similar process. The flow on effects are far reaching and re-entry into existing markets took a number of months to be reestablished. Market access is always critical to an exporting country like Australia.

What can we do? Our sheep industry needs to have a national traceability system. Our current mob system will not be adequate in an Emergency

Animal Disease (EAD) outbreak. The ability to trace the source of diseased sheep quickly and accurately will enable a swift containment of the disease. This is essential for the resumption of normal industry activity and supplying overseas markets.

There will be cynics that will say this is not possible. Electronic Identification (EID) will be necessary to raise the accuracy of traceability. Many producers are using EID as a tool to improve their sheep production. Some producers will bleat about the cost to implement an EID system. Our commodities have enjoyed strong export demand in recent years. Loss of export markets will be far more costly to producers returns than investing in a system that showcases Australia as a best practice and reliable supplier with strong industry-wide traceability.

National traceability is achievable. Most states through their State Farming Organisations are currently exploring business models to implement EID systems. Even with states having different systems it will still be possible to store their data within a national database.

SFOs and industry organisations are keen for producers and all sectors of the supply chain to be engaged in the development of an improved traceability system. It will be far better for the industry to be proactive and embrace new improvements than be forced to accept an unsuitable government model. Biosecurity is a responsible attitude to how we manage our businesses within our regions and supply chains. Traceability is a tool that we use to safeguard our industry.

It's our industry. Let's do it proud."

Glen Tilley

RAMSGATE
POLL MERINO STUD
TINTINARA SA

Displaying:
SE Merino Field Day & Hamilton Sheepvention

ON PROPERTY AUCTION
TUES 9th AUGUST 2022 1.30PM

MN2
Vacc

RWS
ASBV

AuctionsPlus
Elders

Jed - 0427 691 858
Craig - 0412 659 049
ramsgatepoll@outlook.com
www.ramsgatepollmerinos.com.au

Find us on
Facebook

FIBRE & FERTILITY on FRAME with FIGURES

EID TAGS: A BASIC Q&A TO DETERMINE WHAT'S GOOD AND NOT QUITE!

The technological side of our Merino Industry is at it's most exciting at the minute with DNA testing, Sexed Semen, EID wands, Yard Design, Auto Draft just to name a few hitting new heights. EID tags are the centre piece of much of this new gear with a most likely scenario suggesting all stock across all states will be part of one integral system at some point. Meanwhile right now they are an important part of on-property data management per individual animals.

Many tag companies have taken EID's on board with a mostly pleasing response from users yet there have been some discrepancies. I put out a questionnaire to a random group of clients and I'm hoping some of these responses will aid you in any future decisions.

I have added the following from BreedElite's Tim Johnsson with and overall tag discussion of which should be of interest ...

Hi Bill,

As you can probably determine from the discussion it is a very personal preference. What works for one doesn't work for others, and all tags are susceptible to the same issues as any other.

I always recommend people try a handful of different tags for their set tagging convention. If anyone wants to read about tagging conventions they can do so here: <https://breedelite.com/deciding-eid-tagging-convention/>

There are many factors that influence personal preference, but one thing everyone can agree on is retention, we want the tags to stay in! I speak with hundreds if not thousands of farmers a year and no one tag is immune! Every tag and every other criteria you want from a tag is at the mercy of markets, batches of plastic, tagging conventions, readability preferences, use cases, availability, prices etc.

So when looking at retention there are a couple of key things I note.

The smaller, lighter, and less 'lippy' the tag is (lippy meaning nowhere for wire to catch) the better for retention as it reduces the risk of being caught in the first place. There are multi-pinned tags, small cattle style tags, two-piece tags, and single-piece wrap around style tags that all meet the criteria of being smooth (less lippy), but then there is another layer of tagging convention on top of that.

The later in the life of the animal you are tagging, the less of a concern weight and roominess of the tag is (some of the smoothest tags are the biggest). The heavier the tag, or the less 'room to grow' space of a tag the later in life it HAS to be done, otherwise you can see things like ear droop and necrosis starting to happen. This also goes for the size of the pin going through the ear.

I recommend double tagging in separate ears, one EID and one visual as it is pretty cheap insurance, so this is with the view of 'retention of identification' not necessarily 'retention of the individual tag'. It's pretty rare for a sheep to lose both tags in different ears between management events (but it does happen)

The other key way to increase retention is the number of pins going through the ear to hold the tag in place, this comes at a price and the before-mentioned risks around tagging early in life.

For readability through machines (drafters and stick readers) then a tag with the EID that sits along the ear instead of the EID being in the pin, read better in my experience. The other benefit of this is that if the EID isn't in the pin, then the susceptibility to becoming broken during shearing decreases as well. A shearer can hit the tag pin, but not necessarily cut it out. If the EID is in the pin of the tag, then this EID can shatter even though the tag appears fine.

I would agree with the already stated summation: No tag is safe in a feeder!

So in closing, try a sample of each of the tags, but have a consistent tagging convention when you do this trial, approach it fairly and then come to your conclusion about what works best for you.

Cheers, Tim Johnsson Innovation & Entrepreneurship Co-founder and Chief Executive Officer - BreedELITE

1. What brand of EID tag are you using now?

We started using EID 17 years ago - all breeding ewes had EID put in 1 year later. Have used 5 different types/makes over the years and Allflex is what we have settled on.

Shearwell best.

*Really happy with **Allflex**.*

*We have been using **Shearwell** tags for 11 years. Have no need to change. Do lose the odd one at the feeder. We do still use a second manual tag. Tally tag which are similar to leader, but a softer plastic with numbers printed in a stand out colour. Shearwell visual numbers are too small though.*

*We have used **Shearwell** tags for 2 years, happy with retention and readability.*

*We are using **Leader Multitronic**. They are a wrap around tag that requires a special applicator and we use blue as our colour then the year colour with all the details for the main ear.*

*We use **Shearwell**. Have right from the beginning.*

Allflex Rapid tags.

Shearwell tags are unreal have not had any problem. Great for putting in old sheep, really strong.

Leader Multipin tags.

2. Have you changed from an initial type to what you have arrived at now?

Allflex - best retention & least amount of non readers.

*I know others think **Shearwell** are too small to put enough info on them but we always use a separate management tag that we put the number on and the electronic has our name. Both tags have our pic. I think two tags are necessary in case one is ripped out or lost.*

*We used leader **Leader Jumbo** EID's for many years. We liked these because they were re-usable. We were happy with theM but our software provider has now made it near impossible to recycle/re-use tags now so that is why we changed to **Shearwell**.*

*The **Shearwell** are cheaper than the Leader Jumbo and easier to apply.*

*We currently use **Shearwell** tags, found the **Leader** recycled tags not so reliable.*

*Old tag was a **Leader Jumbo** and now to **Leader Multitronic**. Use a tally tag as a management tag with the sheeps number on it as if you don't have a reader with you the printed numbers on - **Shearwell** tags printed numbers are bloody small!*

We tried XXX Tags – they are terrible! Contacted the company believing they were a shit batch and got no reply. Wankers!

We started with **Shearwell** then to **Leader Jumbo EID** then to **Allflex RapID** tags.

We started with **Shearwell** Tags as our first try with EID tags. These tag were great and easy to use with minimal tags lost. Only thing is that they are hard to read print and host a small area to put on numbers. Then we tried **Allflex** bigger tag with easy to read numbers. Negatives It has a big pin through the tag that can move up and down through the ear that gets hooked in fences and paddock feeders hence are losing to many of these tags. Then went to a **Leader** Tags with easy to read print and also good to put in with smaller pin and less movement. A negative with Leader tags is the plastic cracking on the bend of the tag and turning around in the ear. We have lost too many like this so now we have gone back to **Shearwell** but putting two tags in with one as a back up.

Datamars to Shearwell.

We started with **Shearwell** Tags as our first try with EID tags. These tags were great easy to use with minimal tags lost. Negatives they hard to read print and small area to put numbers etc.

Then we tried **Allflex** bigger tag with easy to read numbers. Negatives It has a big pin through the tag that can move up and down through the ear that gets hooked in fence feeders - losing to many of these tags.

Then went to a **Leader** Tags with easy to read good to put in and smaller pin less movement. Negative is plastic cracking on the bend and turning around in the ear this tag has had the most lost tags.

Now we have gone back to **Shearwell** but putting two tags in one as back up.

3. What is the biggest negative with the old brand?

Leader Jumbo - they stopped making them and when they ran out of blue we decided to change. Their reason for discontinuing the line was that it was possible to re use them and they didn't want that. We never re used any as they were near on impossible to get out of the ear and if you did it was near on im-possible to delete the sheep in the software then create a new one.

Shearwell are hard to read the visual number, and ordering process - by ordering through agent there is more room for error!

Shearwell rotate through the ear and can drop out and are too small to read.

Shearwell - found numbers too small for visual reading.

Leader Jumbo EID - wasn't NLIS compliant so needed another tag as well and they are also more diffi-cult to put in ear.

Allflex RapID tag - had rolls of 20 and the gun was easy to use while working yet had a few break downs. Fidgety to load a single tag to use on the one the nephews or brother missed at tagging!! Tags sat to high above ear making it a catching hazard.

All brands are prone to being ripped out at the feeder.

4. What's the reason you're happy with the new?

Shearwell are easy to read, cheap, simple ordering process, timely delivery, customer service excellent, easily inserted as the tags have sharp points. We shopped around and tried to get one of the tag suppliers to do a deal but only **Leader** with the Multi-tronic came to the party. Still way too expensive but they discounted our friendly ID tag and included the printing for nothing.

We are buying about 5000 tags a year 2500 EID's and at \$1.70 each it is significant cost. Having said that the bill from Nutrien for the lamb marking products came to over \$11k. This includes Gudair, Glanvac, B12 Vac, Trisolfen, Scabiguard etc and with tags it probably costs almost \$10/ head to mark the lambs. **The sheep job is bloody good though!!!**

Allflex Rapid tags are larger in size and printing, seem to have better retention and don't rotate in the ear as much.

Shearwell - shearers cut a few tags but sheep still retain tag. They are cost effective and have good retention.

Allflex Rapid ID tags - single tag applicator, easy to load and maintain and good retention.



“Our family of wool selectors has enabled us to create a coat that is durable and warm, yet soft to fit like a glove. A fibre chosen for its specific qualities... only the best will do. The Romney wool fleece is lustrous and combines several important traits. It has the finest fibre of all the long-wool breeds, a uniformed crimp and a consistent micron count across the body. Our added skill in wool selection ensures we know what we are looking for and we work hard to improve this year on year.”

- An Australian garment manufacturer

SA SIRE EVALUATION TRIAL

MENTARA PARK, MENINGIE S.A

The 2021 Drop SA Sire Evaluation Trial run on David and Gwenda Eckert's Mentara Park, Meningie SA is the fifth in succession for the state yet the first for the family. After a successful two-drop debut at the Keynes family's Keyneton Station, Keyneton SA followed by the same at the McMahon family's McPiggery, Lameroo SA, it is great that this vital industry event continues. The '21 drop totalled fifteen entries including two Link Sires covering 950 flock ewes via A.I. across two age groups at the property. Despite a below par conception result there was an abundance of twins that pushed the numbers up enough to be a better looking real-time eventual lambing result.



I was fortunate to be asked to class this year which also makes sense considering I already class the flock and have done so for twenty odd years. The classed in ewe portion will remain on the property once the trial is complete to be utilised within the flock. Classing requirements include an assessment across eight wool & carcass traits visually and a final class: Tops (25%) Flock (50%) & Culls (25%). These visual assessments are then added to the final objective measurements, summarised and at trial's conclusion added to that great Data base in the ... data room and converted to ASBV's from the property held interims - FBV's (Within Flock Breeding Values.)

The recent Trial Field Day held on June 3rd, was a huge success with 120 people on show to add to the great layout of the day. Fifteen display pens of progeny and great presentations from David Eckert, Weatherby's (DNA mob) and MLA's excellent Peta Bradley with the weather 'freaky' considering the amount of rain either side of the day made for a memorable event. As Classifier and perusing the pens on the day I was happy with the way I had classed in line with what the summaries suggested. You are 'blindfolded' at the actual classing day with no hint whatsoever on what animal belongs to what sire albeit the hope that the rippers belong to one of 'my' clients!

Please read the following tables and summaries. It's important to register that the sire entered may not be part of the 'top anything' in the trial but is only one ram from that stud source. That said stud's next entry could blitz the course and rank highly. Every entry is a winner in my eyes as all pay an entry fee of \$3,500, generally supply labour at ie. A.I., lamb marking etc. as well as glean new information on a potential national leading sire. There's nothing to hide here as the following information is available to all that care to follow the importance of the results of such events. Obviously I'm not here to cane the hell out of a sire that doesn't feature well but I may just promote all of the good things that one may do!

2021 DROP ADJUSTED SIRE MEANS

Breeders flock, Sire number	Progeny No.*	YFD (µm)	YFDCV (%)	YSL (mm)	YSS (NKttx)	WWT (kg)	PWT (kg)	YWT (kg)	YEMD (mm)	YFAT (mm)
Anderson Poll, 160729 (Link)	43	18.7	15.0	89.4	49.2	30.0	56.5	61.0	34.6	4.3
Callowie Poll, 190055	31	18.7	16.7	86.4	45.0	29.0	53.6	57.4	33.4	3.8
Claypans Poll, 170632 (Link)	37	17.9	15.6	82.1	43.9	30.1	52.2	55.7	32.4	3.6
Flairdale Poll, 190401	17	19.2	15.7	91.6	51.0	30.8	56.0	58.4	34.0	4.1
Forest Springs Poll, 190193 (Link)	45	18.6	15.6	91.4	43.9	30.0	56.2	60.0	33.8	4.3
Hazeldean, 002529 (Link)	46	18.1	15.4	83.8	45.1	29.4	53.1	57.2	33.0	3.9
Kelvale Poll, 191148	38	18.6	15.4	93.8	43.2	29.9	53.9	57.9	33.8	3.6
Loelmo Poll, 160172	43	17.4	16.9	88.6	43.3	26.5	48.9	53.0	32.7	3.6
Malleetech Poll, 199100	32	19.2	15.4	86.1	50.7	29.5	52.6	57.5	34.0	4.1
Mumblebone, 191150	42	18.4	15.8	93.7	41.4	28.8	52.9	57.9	34.2	4.3
Nantoura Poll, 190061	53	18.7	15.2	93.4	46.8	28.8	52.3	56.7	33.8	4.2
O'Brien Poll, 190455	39	18.3	14.7	88.1	49.9	30.8	57.8	60.8	34.5	4.1
Ridgway Poll, 190240	44	18.6	15.3	84.4	47.3	27.6	52.2	56.8	32.8	4.0
The Yanko, 190086	25	17.6	16.9	86.1	38.9	30.6	52.8	56.5	32.7	3.6
Wallaloo Park Poll, 172032	21	17.6	16.5	85.9	43.8	29.1	55.0	58.5	34.5	3.8
Average	37	18.4	15.7	88.5	45.5	29.3	53.6	57.7	33.6	4.0

"These adjusted sire means are the average performance of all the progeny of a sire adjusted for an individual's birth type, rear type, sex, age of dam, management group and differences in progeny group sizes. Adjustments improve the accuracy of the result and the size of the adjustment is based on the actual influence of these factors on the drop. No account is made for the difference in the age of the progeny, trait heritability and genetic correlations between traits. The overall progeny group mean is listed at the bottom of the table." **AMSEA**

As you can see by just perusing this table alone, there is a lot of information to muster here made easier by the tabled summaries - and there's still Fleece Weights to come!

Let's have a look at Fibre Diameter for starters and work through the columns. The Loelmo progeny were the finest group by 0.2 to their nearest rivals yet 1.8u finer than the strongest and one full micron finer than the group average. The question many are asking is how does this trait leading micron result compare to the groups Fleece Weight. Considering softness, whiteness and micron advantages being a major push for this outfit it was no surprise to feel and see exactly that at the Field Day.

The O'Brien Poll leads the way with Coefficient of Variation of Micron (CV). The lower that figure generally suggests the less skin wrinkle and plainer skin type. The higher the figure can suggest a risky push for extra fleece weight, generally supporting a thicker, often wrinklier skin thus causing a wide frequency of fibres from any sample. A low figure also supports, to a degree, a higher tensile strength. This fact is supported well here considering he is also the third highest trait leader for Staple Strength (SS). Anderson Poll and Nantoura Poll also featured well here and again no surprise considering their stud breeding objectives.

Staple Length (SL) when combined with true density without the pre mentioned skin wrinkle/thickness issues is paramount as to conquer many issues. Number two in my eyes, for the animal to have the ability to drain moisture and dry out quickly and efficiently as to not attract fleece rot, water stain and

that number one, the blowfly! 11.7mm separated the shortest to the longest.

High staple length animals that have the ability to be shorn effectively at six or eight months with a 65-80mm length attracting the required premiums as to be executed with economics in mind. And the biggy - if you can effectively shear twice yearly at that length, you are addressing the mulesing debate period! No surprise to see who leads the way here for the SL trait. Three unmulesed studs - Nantoura, Kelvale and Mumblebone. Not hard to see that extra length in the penned progeny on the day either. Fleece Weights here will be of interest!

The average Staple Length sitting at close to 90mm could suggest just how well these sheep were managed considering they are to be nine months growth at shearing!

WWT, PWT, YWT possibly speak for themselves with guidance led by Anderson Poll here suggesting rapid growth, big carcass and meaty backends as indicated by EMD and good condition via FAT. O'Brien Poll can't go unnoticed here either with encouraging figures and not far from it either, Forest Springs. There's something about the Lorelmo's here that would be easily missed if it wasn't for the next table...

2021 DROP FLOCK BREEDING VALUES (FBV'S)

Breeders flock, Sire number	Progeny No.*	YFD (µm)	YFDCV (%)	YSL (mm)	YSS (Nktx)	WWT (kg)	PWT (kg)	YWT (kg)	YEMD (mm)	YFAT (mm)
Anderson Poll, 160729 (Link)	43	0.5	-1.3	1.5	6.1	0.5	2.3	3.8	0.1	0.5
Callowie Poll, 190055	31	0.5	1.4	-2.6	-0.9	-0.8	-0.4	-0.1	-0.1	-0.4
Claypans Poll, 170632 (Link)	37	-0.6	-0.2	-10.3	-1.7	0.6	-1.2	-2.6	-1.0	-0.8
Flairdale Poll, 190401	17	1.1	-0.2	4.2	6.2	2.5	2.5	1.6	0.3	0.2
Forest Springs Poll, 190193 (Link)	45	0.4	-0.1	5.3	-2.9	2.4	3.5	4.2	-0.6	0.6
Hazeldean, 002529 (Link)	46	-0.5	-0.5	-7.8	-0.8	-0.6	-1.0	-1.4	-0.7	-0.1
Kelvale Poll, 191148	38	0.4	-0.4	9.1	-3.4	0.3	0.2	0.1	0.2	-0.8
Lorelmo Poll, 160172	43	-1.6	1.8	0.0	-3.7	-5.0	-5.7	-7.1	0.7	-0.2
Malleetech Poll, 199100	32	1.2	-0.6	-3.5	7.3	0.3	-0.6	-0.4	0.8	0.4
Mumblebone, 191150	42	0.2	0.2	9.0	-5.9	0.0	-0.2	0.9	0.7	1.0
Nantoura Poll, 190061	53	0.6	-0.8	8.8	1.9	-1.3	-1.6	-1.6	0.8	0.7
O'Brien Poll, 190455	39	-0.2	-1.5	-0.3	6.0	2.4	3.8	4.1	0.2	0.0
Ridgway Poll, 190240	44	0.3	-0.6	-6.3	2.8	-2.4	-1.6	-1.1	-0.9	0.2
The Yanko, 190086	25	-1.1	1.8	-3.3	-8.4	1.5	-0.3	-1.3	-1.0	-0.8
Wallaloo Park Poll, 172032	21	-1.2	1.0	-3.7	-2.8	-0.5	0.3	0.9	0.6	-0.4

"These FBVs are calculated from data recorded within-site and within-drop and express the expected genetic performance of a sire relative to another sire in the evaluation (when mated to the same standard of ewes). FBVs improve the accuracy of sire results because they account for the difference in the age of the progeny, trait heritability, genetic correlations between traits and non-genetic effects such as birth type, rear type, sex, age of dam, management group and differences in progeny group sizes." AMSEA

This chart is not to be tangled with national ASBV's at this stage as it still only concerned with Breeding Values at this site only before it is handballed on with all data to the national system.

The results for YEMD is a talking piece on it's own yet hard to grasp especially when you look at the realtime results in Table 1 between the Anderson ram and Lorelmo for example. I'm asking some help here from numbers guru, Ben Swain to explain ...

CLASSER'S SCORE AND FINAL GRADE

Breeders flock, Sire number	Progeny No.*	Breach Scores @ Marking		Yearling Classing					Classer's Grade - Yearling		
		BFMR	BCOV	CCL	CHAR	SSIRC	LEGS	FACE	Progeny No.*	TOPS (%)	CULLS (%)
Anderson Poll, 160729 (Link)	43	1.6	2.3	26	2.5	3.2	1.5	2.5	41	-2	-12
Callowie Poll, 190055	31	1.7	2.0	28	2.6	3.8	1.4	3.0	31	-18	24
Claypans Poll, 170632 (Link)	37	2.7	2.5	23	2.5	3.9	1.3	3.0	36	-9	-8
Flairdale Poll, 190401	17	1.7	2.1	27	2.4	3.4	1.9	2.8	17	0	-9
Forest Springs Poll, 190193 (Link)	45	2.0	2.2	2.5	2.0	3.4	1.2	2.4	45	25	-22
Hazeldean, 002529 (Link)	46	2.1	2.4	2.7	2.6	3.2	1.7	3.1	42	-12	14
Kelvale Poll, 191148	38	2.0	2.8	2.5	2.2	3.4	1.7	2.5	37	25	-3
Lorelmo Poll, 160172	43	1.9	3.2	2.2	2.1	3.1	1.3	3.0	40	5	-2
Malleetech Poll, 199100	32	2.2	2.1	2.8	3.0	3.8	2.5	3.1	31	-27	30
Mumblebone, 191150	42	2.0	1.9	2.2	2.3	3.4	1.8	2.6	41	11	-12
Nantoura Poll, 190061	53	2.0	2.5	2.6	1.5	3.4	1.0	2.8	52	19	-15
O'Brien Poll, 190455	39	1.8	2.5	3.0	2.2	3.6	1.5	2.8	38	2	-1
Ridgway Poll, 190240	44	1.5	2.3	3.0	2.2	3.4	1.6	3.0	43	-13	19
The Yanko, 190086	25	2.6	2.8	2.5	1.8	3.8	1.4	3.5	24	-10	3
Wallaloo Park Poll, 172032	21	2.0	2.4	2.4	2.1	3.8	1.3	2.9	20	2	-5
Average	37	2.0	2.4	2.6	2.3	3.5	1.5	2.8	34	29	24

"A classer grades all progeny as either Top, Flock or Cull based on their visual assessment of all traits relative to the Site's Breeding Objective (see page 1). This classing reflects the approach that may be undertaken in a commercial flock. Tops and Culls are reported as the group's percentage above / below the drop average, ie. a more positive Tops result is better as is a more negative Culls result. Progeny are also assessed for a range of visual traits." AMSEA

Considering I was fortunate enough to be invited to class this AMSEA trial, it's always comforting to see parallels with ones classing compared to the final outcomes and summaries. Take a look at the Forest Springs 190193 for example: Check him out on all of the tables and you will see that he's done well with some trait leading Growth rates, good for Fat and Staple Length in good order. Now follow this up with the final columns in Table 3 and you will see the best possible outcome - 25% above average for Tops (Studs) and a massive 22% below average for Culls.

Drift back to the left and there's a hint at the reasons why this classer rated him so well: A highlighted Trait leader for Legs (taking in hocks and pastern structure) as well as Wool Character. Strangely there was no highlight on Face Cover where he also lead the fleet with 2.4.

The Nantoura 190061 progeny also excelled well with High Tops and Low Culls as did Kelvale 191148 progeny and a great effort from Mumblebone 191150 (these three excelled for Staple Length) and a good cull rate from Anderson 160729. The 2 & -1 Classing grades of the O'Brien Poll with a reasonable amount of progeny suggest a good balanced ram throwing a good amount of flock sheep with low Culls and low Tops. Considering a lack of progeny due to a poor A.I. results, Flairdale 190401 & Wallaloo Park 172032 faired well.

Lorelmo 160172, one of that studs leading sires also featured well here as Trait Leader for Micron and reduction as well as Colour, Staple & Leg Structure. If his progeny Fleece Weights are close to par, income wise (not taken into account in these trials) considering the micron advantage and a 'hot' rewarding wool market for this micron at the minute, should see him 'cook the goose!'

No picture is complete without Fleece Weights so the previous discussions here are accurate yet will take a new turn once they hit the deck. Watch this space

At the time of print I was able to access the raw data from the Mentara Park Trial shearing yet unfortunately without the required Adjusted Sire Means and FBV's as to complete the picture. There is still a lot to glean here as this data is robust enough as to paint a picture close to accurate.

You can look at the four tables and write about them for days so here goes ...

As you can see there was only a range of GFW 0.8 across all progeny teams (5.1kg-5.9kg) which I believe isn't that great considering there was a highish 1.8 range in Micron (17.4u-19.2u). The very finest micron progeny at a trait leading 17.4u (Lorelmo 160172) was the lightest fleece weight (5.1kg) yet another micron trait leader at 17.6u was also equal heaviest GFW at 5.9kg (The Yanko 190086). In the same vein that other equal trait leader for GFW 5.9kg was also the highest micron at 19.2u (Flairdale 190401)

The three highest trait leaders for YSL (Nantoura, Mumblebone & Kelvale) were just under the average for GFW by 0.1 & 0.2. The lowest Body Wrinkle Trait score tended the same way with just under again for all three for GFW. (Anderson, Kelvale & Mumblebone).

The shortest staple length progeny at 6.4mm lower than the average and 11.6mm lower than the highest for length, had the equal heaviest fleece weight at 5.9kg (The Yanko). These progeny also had the highest stand alone Body Wrinkle Score at 2.8, above the average of 2.0 and way above that of the least wrinkle at 1.5 for the Anderson Progeny.

The other highest trait leader for GFW also at 5.9kg was 3.1mm longer than the overall average (Flairdale).

sire_name	gfw	gfw_adj	cfw	cfw_adj
Anderson Poll, 160729	5.2	5.2	3.1	3.1
Callowie Poll, 190055	5.4	5.4	3.3	3.3
Claypans Poll, 170632	5.7	5.6	3.4	3.4
Flairdale Poll, 190401	5.9	5.9	3.6	3.6
Forest Springs Poll, 190193	5.4	5.4	3.3	3.3
Hazeldean, 002529	5.4	5.3	3.2	3.2
Kelvale Poll, 191148	5.3	5.4	3.2	3.2
Lorelmo Poll, 160172	5.1	5.1	3.1	3.1
Malleetech Poll, 199100	5.7	5.7	3.5	3.5
Mumblebone, 191150	5.2	5.1	3.2	3.1
Nantoura Poll, 190061	5.3	5.2	3.1	3.1
O'Brien Poll, 190455	5.7	5.7	3.5	3.4
Ridgway Poll, 190240	5.4	5.4	3.2	3.2
The Yanko, 190086	5.8	5.8	3.6	3.6
Wallaloo Park Poll, 172032	5.3	5.3	3.2	3.2
Mean	5.4	5.4	3.3	3.3

The Classers' Picks for High Tops and Low Culls were Forest Springs 190193 appealing due to Staple Length, Growth, Staple Structure, Staple Structure and bang on average for for GFW.

Kelvale Poll 191148, due to Staple Length, fertile clean faces, structure and do-ability. Nantoura Poll 190061, very much the same way with legs and general structure add wool character & Mumblebone 191150 excelling with negative Breech Cover, wool whiteness, Staple Length, Muscle and Fat. Sire Evaluation results are very informative with much more information mustered from all trait recording events compared to standard ewe/wether trial recordings in the past where micron and fleece weight basically ruled the roost. With so many traits recorded with today's AMSEA trials, things have become much more balanced thus applauded by an information starved merino punter!

Saying that, if you looked at this trial, The Yanko 190086 progeny with the old wether trial glasses on, could be a hands down 'winner' with sole income in mind considering his trait leading efforts with Fleece Weight and Fibre Diameter. A trait leading -1.6 for realtimes for fibre diameter as well as FBV for YFD, add equal trait leader for realtime GFW (FBV's not apparent yet) and income from the resultant progeny would be applauded. BUT! Why wasn't the Classer agreeable?

When studying all of the Tables involved here and assessing the reasons why, there were no great disasters, yet enough not to rant! It's obvious that the measured skin wrinkle was high and that a visual trait of Face Cover was not that favourable in the Classer's eyes. Add to that, Staple Structure was close to 4 suggesting a shorter, thicker staple. When studying the FBV's for Carcass traits it becomes clear that the progeny were below par here - an often highly associated problem with high fleece weight when not addressed.

There were more obvious classer negatives with some entries that need not be mentioned here and can easily be found on perusal of the tables.

Unfortunately that's a wrap for this article as the printing of this extravaganza is due right now and the final information as to really nut this trial out that I need ain't here! Enjoy the study of the fifth SA Sire Evaluation Trial and check out the extra information to come in the next week. Just bang in Merino Superior Sires for this report and many others nationwide.



2022 Calendar

Sohnic aims to produce rams for the commercial market to help producers maximise their combined returns from wool and carcass.

Victorian State Merino Field Day
15th August

Classings Classic
5th September
Selling 4 Rams

Inspection Day
TBA Early September
10am - 4pm

On-Property Ram Sale
Friday September 9th
Inspection from 9am - Sale @ 1pm

Sohnic Is Looking For New Clients With Shared Goals.

Our breeding principles are totally focussed on \$/ha performance of our clients flocks. Focussing on flock performance without individual focus - Currently we are witnessing huge focus on individual elements within a flock (eg. wool cut, scanning %, lamb survival).

To have a productive and profitable flock being outstanding at individual elements is not enough, we just need to be good at a lot of elements.

This focus of being exceptional at nothing, but good at everything enables optimum returns per hectare and dramatically reduces our risk. We are better being average at a lot of things rather than exceptional at one.

Sohnic focusses are

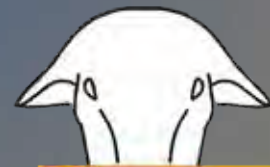
- Easy Care - Efficient, ability to withstand tough seasons and bounce back
- Wether lamb performance on feed - Non-mulsed
- Optimum wool balance - why not have the quality also.

sbprint.com.au

email: enquiries@sohnic.com.au | Scott Nicholson 0438 086 403 | Greg Hose 0427 507 151



ELLA MATTA POLL MERINOS, MATERNALS & WHITE SUFFOLKS



Heinrich Family

ELLAmatta

White Suffolk, Maternal & Poll Merino Stud



L_R Jamie Heinrich, Andrew Heinrich, John & John Bell 'Sillwood', & Greg Downing

Producing modern Poll Merinos suitable for high rainfall areas with special emphasis on worm resistance, carcass attributes and free growing white wool- Mulesed free

2022 Annual Ram Sale 14th October

1 pm White Suffolks & Maternals | 4 pm Poll Merinos

Using the most suitable genetics Australia wide through AI & ET programs
Rams only on offer at annual sale - more top muscling results in this drop

Enquiries welcome. Check our website for details.

📞 Andrew 0427 596 108 📞 Jamie 0427 361 830 🌐 www.ellamatta.com ✉️ team@ellamatta.com
512 Stokes Bay Road, Duncan, 5223 Parndana, Kangaroo Island, SA



What's The Average Age Of Your Ram Buyers?

(Sponsored advert from BreedElite)

As a Ram Breeder, it's an interesting question to ask yourself? Recently we were talking with a Ram Breeder about this, let's call him 'Nostalgic Nick'. 'Nostalgic Nick' was lamenting the fact that every year his clients seemed to be getting older and older. He was concerned that in the next 5-10 years many of them would retire or hand over the reins of their ram buying to the next generation.

"Would his stud still be relevant a short time down the road?" Nick questioned. Every year the same loyal old buyers would return to 'Nostalgic Nick's' sale, another year older, a little bit greyer to buy their rams, but no new buyers seemed to appear. "Why aren't the younger generation interested," he asked. And, it's an interesting question....

In all industries there is a big shift happening towards using data to make better decisions. In the last few years that transformation has accelerated, and in this post COVID world, people have become more familiar with change, have been forced to do things differently, have seen the benefits and are now actively looking for ways to use data in their businesses. Sheep farming is no different.

The new generation of sheep farmers is becoming more tech savvy. They expect more from their Studs and they want the rams they buy to be more than just good looking specimens. They want proof that the rams they buy will perform for them and they want proof that their Ram Breeder is taking their business forwards.

So, here are the questions that we asked 'Nostalgic Nick'...

1. What is the average age of your Ram Buyers today?
2. Will those buyers still be buying rams from you in 5-10 years?
3. Will they even still be farming?
4. What information are the younger generation wanting that you aren't providing?

...do any of these resonate with you?

And it's not just 'Nostalgic Nick' who we have heard this from. This story is incredibly common, even more common than you might think. If you feel you might be a bit like 'Nostalgic Nick', please know that you are not alone and keep reading because there is a simple way to change things in your favour.

The astute Ram Breeders are reading the signs and taking action. They are listening to the market and they are focussed on getting the systems in place that support them to provide the information their clients are asking for. The best Ram Breeders aren't just providing this information to their clients, but they are using it to drive their flock and the industry forward. It will be interesting to see what happens in the next few years to those Ram Breeders that choose to stay the same.

Back to Question 4....

Undoubtedly, the answer that we hear the most to this question is that the younger buyers want to see ASBV's for these sheep, but are not producing them. We have all the figures but they want ASBV's. 'No-stalgic Nick' knows the answer... The younger generation is more tech savvy...

They understand numbers and genetics and the power this has in driving the profitability of their sheep farm... They are looking to drive their productivity forwards faster... They aren't just happy to have sheep that look great visually, they also want proof!

Proof that...

...the rams they are buying are up there with the best genetics in the industry...the Stud they buy from is making gains every year (a Ram Buyer's flock is 5-7 years behind their ram source. If a stud isn't making gains, neither is their buyer)...the rams they buy are aligned to their breeding objective and taking them forward And, proof that ... the genetics you are providing them are worth the money they are paying for.

As a Ram Buyer It's now easier than ever to browse a ram sale from one of your Stud's competitors and see whether you are getting bang for your buck. They can do it from the comfort of their own lounge room. But there is good news for the Ram Breeder who knows they need to get cracking with ASBV's.

The good news is that it is now easier than ever to get started with ASBV's particularly for those Ram Breeders like 'Nostalgic Nick' that already have a lot of the data.

The BreedELITE Sheep System makes the process of collecting and managing your sheep data and then submitting to Sheep Genetics super simple. Here's a few reasons why the BreedELITE Sheep System is unlike anything else available when interfacing with Sheep Genetics:

- The BreedELITE Sheep System has been purpose built for Sheep Breeders by Sheep Ge-netics Data Managers rather than being adapted from other industries like cattle and then made to work for sheep. This means that the BreedELITE Sheep Software is purpose built to make data collection easy and suit the sheep management calendar. Data is always captured in a way that supports decision making and the submission to Sheep Genetics to create ASBV's.
- BreedELITE Sheep gets all your existing data in one place, immediately for you. Most studs, even if they aren't submitting to Sheep Genetics are capturing lots of data. One of the big benefits of BreedELITE is that we get all your existing data into the software from Day 1. We can also help you submit this to Sheep Genetics so you get a boost to the accuracies of your ASBV's immedi-ately rather than having to wait for several years of submissions.
- The whole BreedELITE Sheep System, from the Software & Hardware to the Support & Ad-vice as well as any data help is done by a team who are experienced in supporting Sheep Breeders submit high quality data to Sheep Genetics. You have the confidence that your sys-tem will be simple and help you produce high quality ASBV's with very little effort.
- BreedELITE Sheep allows all your sheep data to be recorded in real time directly into the BreedELITE Sheep Software against each animal in the correct Sheep Genetics Age Stage. This means you always know where your data is and avoid the need for post processing like many other software systems require.
- Data is always collected consistently and correctly into the BreedELITE Sheep Software in line with Sheep Genetics rules. This means that submitting to Sheep Genetics is as simple as pressing a button and uploading a file, rather than hours or weeks of work. This is one of the big-gest benefits listed by our existing clients who made the switch to BreedELITE from other systems.

If you have been putting off getting started with ASBV's because it all seems too complicated, or the sys-tem you have just isn't making it as easy as it should be, simply book a call with us and we would be hap-py to talk you through a few simple steps to help you get this sorted. Looking forward to talking with you soon.

BreedELITE
UNIT 3 41-47
O'Sullivan Beach Road,
Lonsdale SA 5160
admin(at)breedelite.com
ph 08 8382 4565



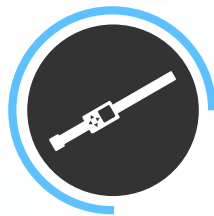
THE BREEDELITE SHEEP SYSTEM

SAVE TIME | SAVE LABOUR | STRESS LESS



SOFTWARE

The leading pedigree and performance recording software for sheep



SMART READER

Fully portable interface for all your mobile data entry needs



SMART DRAFTER

Automatically weigh or draft your sheep on any data combination



FLEECE WEIGH

Automate fleece weighing and in shed data collection

BOOK FREE SHEEP TECHNOLOGY AUDIT NOW
VISIT **BREEDELITE.COM** OR CALL **08 8382 4565**



“Even though we had all the information it just wasn’t accessible...We had spent a fortune and over 5 years trying to find a System...since we have had BreedELITE the problems have all been solved”

Mathew Coddington - Roseville Park



RIDGWAY

Poll Merino Stud

On Property Sale - Monday 8th August
200 Poll Merino Rams - Lameroo, SA
10am Inspection, 1pm Sale

Offering at Hamilton, Classings Classic & Adelaide Show.
Displaying at Bendigo, Keith & Murray Bridge.



Ric, Gail, Matt & Rachel Ridgway

Phone: (08) 8578 8039

Mobile: Ric 0459 432 679 Matt 0439 460 554

Email: merinos@ridgwaymerinos.com.au

Facebook: facebook.com/ridgwaymerinos



www.ridgwaymerinos.com.au



Sold at Classings Classic Ram Sale for **\$19,000**
to Glenville Stud, Cowell, SA.

Gunallo 200999

43rd

**On Property Sale on
Thursday 1st September 2022**



Gunallo

POLL MERINO

We will be selling **120 Specially** selected rams.

DISPLAYING

Australian Sheep & Wool Show
Bendigo
July 15th-17th

South Eastern Field Day
Keith
Wednesday July 20th

**Karoonda & District Stud
Merino Field Day**
Murray Bridge
Friday July 29th

Hamilton Sheepvention
Hamilton
July 31st-August 2nd

SELLING

Gunallo On Property Sale
Gunallo
Thursday September 1st

Classings Classic Ram Sale
Murray Bridge
Monday September 5th

Adelaide Ram Sale
Adelaide
Friday September 9th

Inspection: From 11.00am (SA Time) **Auction:** From 1.00pm (SA Time)

Ray Schroeder
0427 778 485
ray@gunallo.com.au

Brad Schroeder
0400 335 660
brad@gunallo.com.au

Bill Walker
0428 973 804
Stud Adviser

Nutrien
Ag Solutions

Simon Aldridge
0439 078 872

WWW.GUNALLO.COM.AU



BADERLOO

Annual Baderloo On-Property Auction

Wednesday 17th August 2022 | Inspect 11am
Sale Starts 1pm (SA time) | Auctions Plus Sim Sale



160 POLL MERINO RAMS FOR SALE

Inspection Day - Wednesday 10th from 1pm

- ✓ MORE LAMBS
- ✓ MORE MEAT
- ✓ NON MULESING
- ✓ MORE WOOL
- ✓ WRINKLE FREE
- ✓ FLYSTRIKE RESISTANT

Our Merinos are bred to be tough and resilient. As industry leaders for growth, muscle, fat, fleece, staple length and fertility, Baderloo will fast-track your genetic gain and increase your profitability.

Full ASBV's available. For more info visit: baderloopollmerinos.com.au



Quality Wool: Simon Seppelt 0408 707 907

Quality Livestock: Dave Whittenbury 0455 600 488

Call Dan 0439 347 362

128 Baderloo Road, Spalding

E: daniel@baderloo.com.au



SALE
THURSDAY
25th
August
2022



Offering 50
Poll Merino
Rams

AuctionsPlus™



INSPECTIONS: 11AM
HELMSMAN AUCTION: 1PM
MURRAY BRIDGE SHOW GROUNDS

For more information, please contact:

Stud Master: Chad Burbidge m. 0428 554 003 e. benefield@baonline.com.au
Elders agent: Hayden Biddle m. 0429 031 194 e. hayden.biddle@elders.com.au

3% rebate to outside agents introducing buyers in writing 24 hours prior to the sale.



A QUESTION FROM GLEN TILLEY, WOOL PRODUCERS TO THIS CLASSER ...



What are the good wool producers trying to improve regarding their wool? Not just fleece weight I hope! Is it style, clean wool, reduced CV, improved SS, whiteness, or is it maintaining good quality wool on a plain, fertile, well balanced carcase sheep.

Most good wool producers have had the sudden realisation that the proposition of improving fleece weight has lost a lot of momentum in the fact that in their endeavours to do so, has had immediate negative impact to the flock. (Some growers consider CFW 40+ as the next step!) More classing waste due to shorter wools coming from tighter wrinklier skins with only slight fleece weight gains if any has seen a backing off and a subsequent concentration on increased staple length and the bonuses of producing animals that are capable of six month shearing if required.

The tighter skin version is too often associated with those who have a tendency to enjoy the show ribbon circuit, breeding stock that are so incorrect with skin makeup they can only breed stock that require mulesing and would perish without that procedure - period! It's safe to say that these skins are a magnet for water stain, fleece rot, shearer resistance and that green fly.

Staple Strength massively increases shearing twice a year due to the lessening chance of seasonal or stress related fluctuation over that six month period. If you have the ability to shear twice a year, you are inadvertently addressing the ever boiling mulesing debate due to thinner supple yet productive skins producing a fine fibre that can grow to 130mm at twelve months but preferably 70mm at six months of low micron. This in turn has a positive relationship with that other great chestnut - fertility and the ability to produce and wean more lambs. For every measured point of breech wrinkle subsequently equates to 10% less lambs - fact!

Increasing fleece weight points to the lowering of Eye Muscle and Fat so many progressive growers are sorting out the balance within their breeding plans as to find the tradeoffs necessary as to produce a well rounded animal. Too extreme for eye and fat can lead to reduced wool quality, increased micron and the inability to access those beautiful premiums available right now for young wools in the vicinity of 16-18u. Too much fleece weight usually equates to reduced premiums for meat as well as the survivability and fertility of the animal when drought like conditions occur. Those graphs are very concise and clear.

Good producers would realise the safety in balanced figures mostly associated with ASBV's. PWT 5.0 YWT 8.0 AWT 8.0 YCFW 25 YEMD 0.5 YFAT 0.5 YSL 15 could be suggested as the ideal 'safe' prospect at the minute. AWT 15.0 & YCFW 40.0 could see a demise of the industry. A tight skinned fleece roty, thumping 90kg dry ewe will see to that! Good growers realise that big sheep as adults are of no value to the industry and a young energetic shearer might study the 'contract' to check what he missed in the small print!

A Merino poll ram with a light to bare head with minimal leg coverage yet fleece productive and a lamb producing machine due to free easy blood flow from supple skins with no wrinkle should be etched on the next reincarnation of the \$2 note should that ever reappear!!



Classic Sponsor

MLP FINALE AT TULOONA The final classing and assessment of the 2015/2016 drop ewes as part of the excellent AWI sponsored Merino Lifetime Productivity project, occurred during February culminating in an excellent Field Day at Michael and Jane Craig's, Tuloona - Harrow Vic.

The seven year project collected data from every ewe annually including culls as to record lifetime performance. The massive amount of information collected utilising all possible objective measurements for carcass and fibre including genomics testing as well as subjective assessment, will lift accuracies across all traits recorded and will be a boon to our industry.

This info will establish just when is the optimum time to capture the Merino's wealth of trait data. In the past the majority of this only came from young stud rams at around ten months of age after its weaner shearing prior to sale at around 14-16 months of age. The merino ewe will now increasingly be the catalyst for high accuracy info leaving the male version in her wake!

I was fortunate enough to be selected as Professional Classer over the duration and have learnt so much about the productivity abilities of an aging ewe amongst other important information mustered over the years. The Balmoral/Harrow and surrounds based committee have been a huge force in ensuring absolute success in organising exhaustive data collection days and subsequent field days.



MERINO GROWERS HEAR CALL FOR MORE WOOL TRACEABILITY

TERRY SIM, MAY 13, 2022



I personally thank Terry Sim, Sheep Central for his permission in letting me reproduce the following important industry article from May 16th 2022. For all things Merino this is the only online tabloid worth its salt in digging into topics that are worthy with the added bonus of added comments from 'subscribers' at the end of the article. All of this and no subscription fee somehow!

Pooginook Merino NSW recently held an industry day, Your Future With Merinos, with one segment assigned only to the mulesing discussion with a wide variety of guest commentators putting there two bobs worth in as to their own thoughts on the issue. There's one big obvious ingredient missing across the discussion of which all of you reading this reproduction of the original article will most likely pick up on!

The photo above was nothing to do with the day whatsoever but one that I have included from my own photos taken at a sale in Victoria only four years back! This may suggest to you as to the reasons why there's no way that some commercial growers and studs cannot afford to NOT mules! A breeding facet of the industry that needs total elimination or at least time in a Turkish prison.

Please read the comments section at the article end of which Jim Gordon adds his thoughts to the discussion ...

AUSTRALIA'S wool industry was still playing catch-up with other countries in non-mulesed wool production, growers were told at a Merino field day at Jerilderie yesterday. At the Your Future in Merinos field day at 'Pooginook', industry speakers also discussed the need to improve National Wool Declaration rates, clip traceability, preparation and wool quality.

Australian Council of Wool Exporters and Processors president Josh Lamb said there would probably always be a market for wool from mulesed sheep, the numbers of wool growers moving to non-mulesed production "were not moving quick enough" to match demand. Mr Lamb said annual National Wool Declaration figures of around 3 percent for Ceased Mulesed suggested growers were still transitioning flocks to non-mulesed production.

When asked how urgent was it that non-mulesed wool production increase quickly: "I think it went past urgent about six or seven years ago, from our point of view," he said. "The industry for lots of different reasons has lacked a lot of leadership on it for the last 15 years, we started off on the wrong foot and have been playing catch-up.

"We're probably catching up for the last couple of years, but we are definitely a long way behind New Zealand and South Africa." Mr Lamb said. "We

do produce the best wool in the world and we should be well out in front (in non-mulesed wool production) of other countries, but we're not."

National Council of Wool Selling Brokers of Australia president Rowan Woods said it would be "nothing short of catastrophic" for growers if stopped mulesing in the pastoral zone of New South Wales. He said sheep might be seen once a year on properties west of the Darling (River) and losses from flystrike of non-mulesed sheep could mean the loss of any benefit from a wool price premium. "Those people won't be swayed, I won't be trying to sway them either." He said grow-ers on 'inside' properties were able to observe their flocks more often. Mr Woods said the industry's focus needs to shift from non-mulesed wool to wool quality.

Mr Lamb said transparency of the Australian wool clip starts with the NWD, but Australian Wool Innovation program manager – genetics, Geoff Lindon, said about 40pc of Australia's wool clip is still undeclared on the NWD for its mulesing status "and that has led to growth in the number of Australian wool integrity schemes. Mr Lindon said about 25pc of Australian growers are not filling out the NWD at all, and 15pc are completing some parts of the NWD, but not the mulesing status sections. He said AWI surveys indicate about 30pc of Merino sheep in Australia are non-mulesed, but rates are different in each state.

"So it (mulesing) is still in the states where flystrike risk is the highest." Mr Woods said it was time to re-visit the industry's efforts to get all growers declaring their clips on the NWD. Reasons why some growers don't complete the NWD included that it wasn't mandatory, some brokers did not require it to be completed, he said. "Our company for example, we have 100pc declaration (rate among clients) – we insist that our growers declare."

He said the latest AWTA data indicated that about 73pc of bales tested were declared on the NWD. "But that's only risen 1pc in the last year, so as the president of the NCWSBA, I represent companies that handle 80pc of the wool sold at auction." He said not all wool brokers are members of the council, but he would strongly encourage NCWSBA members to encourage their growers to complete the NWD voluntarily "because it is in our best interests."

"It could be mandated, I for one wouldn't complain and I don't think the exporters would.

"That's the first document required for traceability." Mr Lamb said he supported Mr Woods on the NWD. He said the rate of NWD compliance "comes down to the education of the wool grow-er" and brokers achieve declaration completion rates of from 30-40pc up to about 90pc.

"We can't put enough emphasis on how important that document is to the wool industry; every-thing bounces off that document."

AWEX wool classer registrar Fiona Raleigh said AWEX was ramping up its support in the traceability space and acknowledged Mr Lamb's comments on wool quality. "I think I would like to say wool quality/preparation because we grow the best wool but that can then get blown away in the harvesting process." She said growers can declare mobs on the NWD before shearing and then present that information to the classer.

Non-mulesed NSW wool grower Peter McCrabb runs sheep north-west of Hay and at Tibooburra and said it was "quite ridiculous" that about 40pc of Australian wool growers were not completing the NWD's mulesing status sections. "That's our international integrity for a country that produces the best wool in the world and arguably the most wool in the world." He said producers can't transport or sell livestock without a National Vendor Declaration, or sell sheep on AuctionsPlus without a national sheep health statement.

"Those things are just mandatory."

He suggested that with the brokers association, AWEX and AWI, working together NWD compliance can be increased.

Mr Lamb said there are a variety of wool integrity schemes, including the Australian Wool Ex-change's SustainaWOOL. Responsible Wool Standard is the leading scheme, he said, although some poorly prepared RWS-certified clips that were cotty, had colour or not even classed properly have been attracting the same premium as a well-prepared RWS clip of good quality.

"That for us as exporters and processors is a massive issue." "So what Australia really needs to do in the long-term – whether it is SustainaWOOL or another scheme – is we do need our own industry program."

After the forum, Mr Lamb said the concept of setting up an Australian wool quality assurance scheme is not necessarily aimed at increasing non-mulesed wool production. "The issue we've got with RWS at the moment is that no part of RWS that allows for proper clip preparation, particular when you consider we've got the best wool clip preparation standards of any wool-producing country in the world.

"It's more about Australia being able to say 'this is what we are producing, it is mulesed, non-mules, we're doing this and that, we're having our own scheme that grower can access a bit easier and then the RWS's of the world can say 'your standard fits what we want to do and we're happy to segue into that – which is exactly what happens in New Zealand with ZQ," he said.

"Why can't we put forward to the world what we are doing, rather than being told at the other end?"

But Mr Lamb said setting up an Australian QA scheme would not solve the perception of Australia as a mulesing country "in one hit", although he believed this perception has been slowly turned around in recent years. Mandating pain relief and a change of attitude in the industry would help, he said.

"It's not about forcing everyone to go non-mulesed, it's just about laying out where it's at and informing wool growers. Mr Woods said told the Jerilderie field day's forum there was work involved for growers to comply with RWS, including stopping mulesing, surviving an audit and management changes. Mr Lamb said the Australian industry needs to learn what has made the RWS system so successful.

"There is a lot of non-mulesed wool out there at the moment that brings no premium at all, but the majority of RWS wool does." Mr Lamb said wool declared as non-mulesed was not always sold to a non-mulesed order, but there was a recent incident where wool from mulesed sheep has been represented as non-mulesed. "They're things that we need to stamp out and we've had discussions with AWEX about how we do that."

Mr Lamb also said growers should not go into non-mulesed wool production thinking they were going to make a 20pc premium on wool prices "for the rest of your life, you won't, you will have to find better reasons to go down that path. This could be making efficiencies on farm, being a better global citizen "or maybe it's just looking after your kids, who will be the next generation of wool growers."

"I think what we are talking about today and what we do over the next 10 or 15 years, I don't think people in this room will see the full benefit of it, the next generation will. "I think we've really got to be looking further ahead and don't make these decisions based on making money," he said.

"That (price premium) is there at the moment, but if they next generation of Chinese consumers – which AWI could probably talk about later – the next generation of consumers gets a conscience about where their product has come from or otherwise, that will be a gamechanger in this space and the way the Australian industry is at the moment it won't be a good gamechanger for us."

About 360 people registered to for the field day in person or online and 120 attended. Pooginook Merino Stud manager John Sutherland said

participants were able to discuss many aspects of the Merino industry that are topical at the moment. "We got great exposure across all states of Australia - we had people from Tasmania, South Australia, Western Australia, Victoria, New South Wales, Victoria and Queensland."

COMMENTS **Jim Gordon, May 15, 2022**

After watching the video on "Your Future in Merinos" I would like to congratulate everyone involved and would highly recommend interested parties to have a listen. Highlights for me, Josh Lamb, brilliant really told it the way it is. Great to mention wool quality. The wrong skins are playing havoc with the processing quality in these wetter years. It is so hard for most to be completely honest, for fear of losing their jobs. Vested interest is holding the industry back big time.

I noticed that Jason Letchford talking about retention of shearers. No mention of sheep that are nearly impossible to shear. There have been hundreds of thousands of them over the last three years. Shearers having to shear whole runs of fly-blown sheep. It would be enough to drive anyone out of the industry.

Also congratulations to Matt Browning talking about what he is doing, while not wanting to tell others what to do. As an industry, we have to get the right information to growers without the self-interest groups having a big influence. This pushing the barrow of self-interest is not helping the commercial grower get it right, to avoid them giving up and going to other enterprises. The Merino industry can't afford to lose anyone.

The whole day was missing the most important thing in the industry, and that is why do sheep need to be mulesed and why do sheep get fly-blown, and why do shearers have such a night-mare shearing some sheep?

The answer is so simple, take the hard wrinkle off the sheep. Buy rams with no hard wrinkle. Run your fingers along the sheep a couple of inches off the backbone. If you feel hard wrinkle, keep walking.

The reason sheep need to be mulesed is because of the wrinkle down either side of the bum. No wrinkle, no need to mules, so welfare groups, retailers and exporters are all happy. The reason sheep get fly-blown is the moisture retention in the valleys of the wrinkles, and suint. With heat from the warmer months this moisture becomes stagnant, growing undesirable bacteria. The rotting smell attracts the flies.

With no wrinkle, the sheep are able to dry their skin quickly. No moisture, no bacteria and no flies. It is that simple. We could easily fly-proof the Australian sheep flock. Wouldn't that be something?

Why can't AWI get a handle on this, and stop spending millions upon millions on fly prevention? Is it just to retain jobs?

With hard wrinkle, to much suint and Joseph's coat of many colours, why would shearers want to even go to work? There is nothing good about hard wrinkle. It only causes problems. It has no influence on clean fleece weight. It will help with greasy fleece weight; however, the grower doesn't get paid for more lanolin. The sad thing is, no one knows where clean fleece weight comes from.

Get the wrinkle out of your flock and cut the workload. Reduce the skin area and double the number of follicles.

All the same, that tangle of EMD 51mm and 15.6u (close to sale test - not March!) for any ram from any stud in this nation is an absolute rarity!!

- Cullings'22 regarding Lot 131 at Ridgway Advance O/P Sale'21.

AROUND THE ON PROPERTY SALES in 2021 ...

For the last decade or more I've had the enjoyment of revisiting the previous years' On Property sales. All of these reports are from studs that are Classings' clients or studs that have a huge influence on them and us for future gain and direction and advertise in this very production. Due to the unprecedented demand with my classing work across the continent in the last three years particularly, this has been a huge task to lock myself away in my office in the 'quiet' month of April when hopefully most of you are seeding or the like.

It's now half way through May in other than the Classic'21 sale report, this is the newsletters' very beginning! So, instead of reporting on most purchasers and purchases across all sales I have made my mind up to cut it back a bit in the interim and mention mostly highlights from each sale. So here goes in no particular order ...

RAMSGATE, Tintinara S.A.
Offered 72 Sold 71 Average \$2,143 Top \$4,200 twice.



A rock solid effort from the Keller boys with only their 13th auction which was very predictable at the stud's cataloguing a month prior, amongst heavy showers yet in the dry terrain of the new shearing shed and sur-rounds.

Fourteen sons in the main auction by Sohnic 181195, twelve by Karawatha Park 170268, eight by Ridg-way Advance 170144, eight by the legendary Brookdale 014012, six by Ramsgate 180451 and the rest by an assortment of Leahcim, Wallaloo Park & Ridgway Advance sires and A.I.

Top price: \$4,200 Lot 23 RG200309 (x Brookdale 014012) Sold to O'Brien Poll, Kyancutta S.A. Outstanding fibre quality from a supple skin with a backend like Auntie Deidre's. PWT 6.6 YWT 8.3 YEMD 0.9 YFAT 0.2 YCFW 23.6 YSL 15.8 DP+ 162.

Top price: \$4,200 Lot 31 RG200266 (x Sohnic 181195) Sold to J & J Keller, Tintinara S.A. Great fibre density here, fluid nourishment and cuttability (!) backed up with ASBV's to prove it. PWT 6.5 YWT 7.5 YEMD 1.0 YFAT 0.5 YCFW 27.8 YSL 17.7 DP+ 173

Classers' picks other than the top two: Lot 5 \$4,000 RG 200462 (x Wallaloo Park 180067) sold to Narilla, Milang S.A. with a big meaty square backend and fibre to match with YFD -1.6 and silk like qualities. Lot 21 \$2,600 RG200023 (x Leahcim 182259) sold to Andrew Mahar, Ceduna S.A. with all things right add YCFW 26.6 & YFD -1.2. Lot 26 \$3,800 RG200201 (x Sohnic 170970) sold to Nantoura, Wharminda S.A. with meat plus aided by YEMD 1.1 YSL 12.3 & PP.

Keilira Station, Keilira S.A. again the quantity buyers securing fourteen, Shane and Bernard Vowels, Tintinara S.A. huge support with ten, GR Foster, Naracoorte S.A six rams, Richardson Brothers, Tintinara with six, Tom Joyce, Mullaquana Station, Whyalla S.A. with five and three each to Mt. Boothby, Tintinara S.A, Netallie Station, Wilcannia NSW, Penola Park S.A. & John Weinke, Wynarka S.A.

BORUNG, Waikerie S.A.
Offered 60 Sold 60 Average \$2,180 Top \$6,250.



Even though this was the stud's 45th auction, it has only been a few years since the new custodianship of Brenton and Penny Kroehn since Peter's retirement. This sale encompassed all that the stud has been striving for for a few years now - a full clearance of a sale team full of depth and an average that rewarded all of the effort and spondoolee to get it there!

Top price: Lot 5 \$6,250 BOR200023 (x Wallaloo Park 150992) selling to Brian Hampel, Loxton S.A. Fer-tile head, very deep bodied with a fertile, clean head ready for rootin'! GFW% 117 19.4u 2.5sd 12.9cv & 0.0pf with realtime EMD 45mm & FAT 7.0mm - a well deserved top price.

Classers' picks: Lot 8 \$3,600 BOR200126 (x Gunallo 180250) sold to Kym and Michelle Thiele, Pompoota S.A. with the perfect hindquarter setup with fibre plus, a muzzle like a robber's dog with GFW% 123 16.9u 2.4sd 14.3cv & 0.0pf. Lot 9 \$3,200 BOR200089 (x Gunallo 180250) sold to Critta and Bec Free-man to enhance their super flock at Penong S.A. This fella 18.6u 2.6sd 14.2cv 0.2pf and a thumper!

Classic Sponsor



Classic Sponsor



Lot 10 \$3,000 BOR 200273 (x Wallaloo Park 150609) sold to Lone Gum Poll, Crystal Brook S.A. very deep and the best back end in the catalogue they say, GFW% 111 EMD 39 FAT 6. Lot 24 \$3,200 BOR200149 (x Gunallo/WP Syndicate) to Nathan Wegener, Callington S.A. for a free skinned corks with 18.5u 2.5sd 13.7cv 0.0pf & EMD 40.5. Lot 58 \$2,000 BOR200222 (x GUNALLO 170003) sold to Leon & Sean Stasi-nowsky, Loxton S.A. 138kg of braun and chump! GFW% 110 EMD 41.5 FAT 7.5.

Of the multi buyers, Tony and daughter Riley Nutt, Orroroo S.A. were an important part of the auction with their competition in securing ten, David and Paul Humphris, Gladstone great support with six, Kym and Michelle Thiele bought four rippers, along with four each to the Hoffman, Loxton S.A., Jacob Hermann, Yurgo Farms, Karoonda S.A., Carl von Schluppenheimer, Fritzville NT and Netallie Station, Wilcannia NSW with three of the best. Another 25 were sold between \$600 - \$1,000 post sale just before a cork popped.

LUCERNBRAE, Callington S.A.
Offered 60 Sold 46 Average \$1,452 Top \$3,800



This stud deserves a better turnout as I've been suggesting it via this medium for way too long. A wider audience at the Classic sale in any year sees people gloat in disbelief at the quality of their animals but it's hard for the Paechs to capture a local audience when there is not a huge populous of wool growers in the area. Yes, other studs promote their stock two fold yet I thought by now the word might have spread that the genetics here are top notch, worthy of attention and the some of the best in the state.

Needless to say and typically I guess, Classings' clients bought just under 50% of the catalogue with Tom Joyce, Mullaquana Station, Whyalla S.A. leading the way with a twelve ram swipe and averaged around \$900 for the privilege to a lowly top of \$1,400!

Top price: Lot 11 \$3,800 LUC200456 (x Gunallo 170295, Classic'18 @ \$60,000) selling to Kym and Michelle Thiele, Pompoota S.A. loaded with the renowned 170295 density and bold crimp. BWT 111 kg YCFW 35.0 YWT 9.7 & 18.5u 2.9sd 15.6cv 0.6pf.

Classers' Picks: Lot 1 \$2,400 LUC200200 (x Brookdale 014012) sold to a realistic budget conscious Netallie Station, Wilcannia NSW. In the first lot for a reason, pen filling, backend like Aunt Mabelle's at BWT 113kg EMD 40mm & YWT 9.0 at 18.4u a dream start for the two they required. Lot 2 \$2,800 LUC

200451 (x Gunallo 170295) and selling to quality hunter, Stuart Everett's Lone Gum, Crystal Brook S.A. YWT 9.2 YEMD 0.0 YCFW 29.0 & 18.5u 2.6sd 13.9cv 0.4pf.

Lot 3 LUC 200183 \$2,000 (x Brookdale 014012) selling to Mount Boothby, Tintinara S.A. with the typical freight train backend setup and a ram that anyone discussing Mules Free addressing tactics could use to kick things off. Bold crimp as usual with EMD 40.5 YWT 7.4 YEMD 1.1 with the outstanding realtimes of 16.6u 2.4sd 14.7cv 0.0pf.

Lot 21 \$2,800 LUC200421 (x Gunallo 170295) sold to Nathan Wegener, Callington S.A. who inherited this ram by default as I had bought him as a up-my-sleeve spare such was his outstanding quality! BWT 109kg YWT 9.9 YCFW 27.0 & 18.4u 2.8sd 15.0cv 0.4pf.

Kym Frahn, Mannum S.A. the typical excellent support with six gems, Kym and Michelle Thiele, Pompoota with five rippers, Stevens Farming, Seymour Vic. with four, Nathan Wegener's Colrae, Callington S.A. with three and Rob Paech another three.

KARAWATHA PARK, Buckleboo S.A.
Offered 138 Sold 138 Top \$6,200 Average \$2,435



This stud deserves all the attention it gets! Big investments in genetics, early adopters of ASBV's, very good on farm results from clients and the most atmospheric ram sale in the county! A total clearance didn't surprise considering the population on the day and the quality appeal of the stock. The cataloguing for the sale here is one of the year's best jobs.

Eight of the first twelve rams penned where sired by Leahcim 173122, a ram bought by Penrose Poll, Esperance W.A. for \$14,000 in 2018 that this mob are a semen share of. Leahcim 183391 was responsible for twenty sale lots, Wallaloo Park 180766 with nine, Karawatha Park 170413 with six. Around 40% of the sale team was bred by three main syndicates comprising of Wallaloo Park, Leahcim and Karawatha Park sires TOP PRICE: Lot 12 \$6,200 KARP200319 (x Leahcim 173122) PP and bought by the Inglis Brothers, Kimba S.A. Had a raw GFW% 132.2 or a third again above the average fleece weight of the entire ram drop at March shearing! He was loaded with a safe enough density and nourishment reflected by YCFW 31.1 add YWT 10.0 & MP+ 176.

Classers' Picks: Lot 3 \$4,800 KARP200192 (x Wallaloo Park 180766) and sold to the Mayor of Cockaleechee, Pat Hannan. Yes another super styled bold crimper with a great backend, super long body and a tremendous light, fertile dial with YCFW 29.9 YWT 6.7 and a twin.

Lot 6 \$4,000 KARP200291 (x Leahcim 173122) and bought by Wayne and Sam Young, Orroroo S.A. White and great fibre quality with YCFW 26.0 & 18.2 2.7sd 15.0cv 0.0pf. Lot 15 \$5,000 KARP200933 (x KARP200933) and secured by Pat Hannan. Only two small stubs protruding from this fella's scalp stopped him from being kept for stud duties. Good balanced figures of YCFW 21.0 YWT 6.5 YEMD 0.6 & 19.8u.

Lot 24 \$3,800 KARP 201205 (x SOAKS Syndicate) and one of fifteen bought by Wade Dabinett's Longtrail Farms, Lameroo S.A. YWT 10.0 YFAT 0.7 YEMD 1.5 & DP+ 169. Lot 80 \$4,800 KARP 200299 (Leahcim 183391) and jagged by Shannon Larwood, Kimba S.A. Silky, productive type skin here aided by 17.8u 2.6sd 14.9cv & 0.0pf with a ripping YFD -1.7 and YCFW 27.6.

One to track! Lot 33 \$5,000 KARP 200138 (x KARP 170413) This bloke was secured by Pat Hannan, influenced totally by me and had the best skin/micron package in the whole shed but looked very of-fish on sale day. Worth the punt (with full backup by the stud if suddenly deceased!) there was some surprising competition on this fella albeit the impressive nature of his special supple plus skin. 17.7u 2.9sd 16.1cv & 0.2 plus YFD - 1.2.

Notable bulk buyers amongst the auction were Bruce and Julie Nutt, Port Augusta with around twenty, the pre mentioned Longtrail Farms, Lameroo with fifteen, Hillsea Station, Elliston S.A. with a dozen, CPL clients, Netallie Station, Wilcannia NSW with ten. Grant and Marg Chapman, Orroroo with a solid nine, and Bozo Larwood, Kimba S.A. with a very handy group of four and Gunga, Joy, Joe and Jess Koch's, Breezy Hill, Booleroo S.A. with seven. There were thirty one physical buyers of rams on the day.

WESTWOOD POLL, ESPERANCE RAM SALE, ESPERANCE W.A.

Offered 46 Sold 46 Top \$3,700 x 4 Average \$2,509 Highest average of sale.



I managed to make it to the Welke family's Westwood Poll for cataloguing in 2021 despite threats of Covid restrictions and the like. It was one of the most memorable classing days of my career with the first progeny of Leahcim 182185 waltzing down the race as if they owned it! This fella was procured at Classic'19 by Westwood for \$14,000 and has seen progeny from both sexes ascend this joint too another level.

Remembering that Westwood averaged a healthy \$1,580 in 2020, the huge, close to \$1,000 jump in average was due in part to the 182185 progeny which made up 22 of the 46 on offer! As close to 50% as you could get!

Top price #1 Lot 17 \$3,700 WW200002 (x Leahcim 182185) nabbed by Ash and Megan Reichstein, Laurina Farms W.A. with bold crimp, long-bodied and a PP. YCFW 25.7 YWT 8.7 YSL 12.2 EBWR -0.8 YFD -1.64 @16.7u .

Top price #2 Lot \$3,700 WW200622 (x Leahcim 182185) bought by Andrew Bolt, Munglinup W.A. with above average staple length, bold crimp and a PP at 17.3u add YWT 12.1 YFAT EBWR -1.0 YFAT 1.4 & YFD -1.99.

Top price #3 \$3,700 WW200112 (x Wallaloo Park 150245) secured by Nick Ruddenklau, EPASCO Farms, Condingup W.A. this fella had an extremely long body and a PP, testing at 17.9u with a top end DP+ 192, YCFW 26.3 YFD -1.14 and YWT 8.4.

Top price #4 \$3,700 WWXXX (x Wallaloo Park 150245) bought by Ian and Barb Cummings, Katanning W.A. was a 17.4 micron twin-born ram with YCFW 27.3 YSL 16.2 EBWR -1.01 & DP+ 176.

Classer Pick: \$3,100 Lot 40 WW200205 (x Leahcim 182295) bought by EPASCO, pushing great numbers that lets us know that there is the best of all worlds when it comes to ASBV's sometimes! YCFW 31.4 yet EBWR -1.0 YEMD 1.25 & YSL 13.1 and a PP.

EPASCO Farms via manager Nick Ruddenklau ended up buying ten all up that will be a huge boost to the once flagging home ram breeding program and improve growth rates and equally as important, fertility.

CPL clients, Mark and Liv Walter, Walter Ag, Cascade W.A. bought nine across the Westwood sale averaging close to \$2,500 to a top of \$3,100. Also CPL clients, Leigh and Karina West, Karleigh Farms, Gibson, bought three rams to a top of \$3500 and Alistair and Robin McIntyre, Esperance, paid to a high of \$3300 for a team of four. Neville Welke, Coomalbidgup W.A. was good support with four high indexed pickups and Peter Whiting's Shepwok Downs, Munglinup W.A. finishing up with three.

PENROSE POLL, ESPERANCE RAM SALE, ESPERANCE W.A.

OFFERED 30 SOLD 25 TOP \$3,900 AVERAGE \$1,640



The Penrose Poll young rams are a testament to tenacity at times particularly when surrounded by some fairly average seasons of late. From a cursory classing in February where there's slim pickings compared to how they look by September, it is a credit to the Pengilly's and the breed!

Many of the ASBV trait results are right up there with the best as you will see amongst this sale report. The Pengilly's hopped on board with SheepGenetics early thus they are well positioned with accuracies and depth of data. Highest numbers across all traits and rams in the catalogue I will display as follows: YWT 13.9 YCFW 40.4 YEMD 1.9 YFAT 0.8 YFD -2.3 MP+194 DP+ 202. All we need now is just one ram to display all of these at once!

Top price: \$3,900 Lot 87 PEN200380 (x Leahcim 173122) knocked down to Peter Piercey, D Piercey & Co, Salmon Gums W.A. Exhibited spot on density matched by YCFW 40.4 YWT 12.6 YEMD 1.0 YFAT 0.7 & a massive DP+ 203!

Another ram Lot 80, \$3,500 PEN200373 (x Penrose 180405) was paid by return buyer of four years Lance Norwood, Gibson, who is aiming to shear twice a year. YCFW 30.2 YFD -1.3 YWT 12.6, YEMD 1.2 and DP+ 202. He also purchased a second Penrose ram at \$2700.

The volume buyer in the run was CPL client, Mark and Liv Walter, Walter Ag, Cascade W.A. who averaged \$1,467 across a team of six. His top purchase: Lot 81, \$3,400 PEN 200188 (x Calcookara 170400) would have been pure white I know and stark with his crimp due in part to the A.I. Sire used. YCFW 35.6 YFD -1.3 & YWT 9.6.

Paul Ietto, Allannaluke Farms, Grass Patch, who purchased five at an average of \$960. Paul's top get was in Lot 61, \$2,000 PEN 200304 (x Leahcim 173122) with a YCFW 31.7 YWT 7.3 & YEMD 0.3 "The rams will join the operation's sire battery and be joined to 2100 ewes for a six week lambing starting from April 1."

Mr Ietto said this year they achieved a 100pc lambing unscanned and they achieve a 5.5kg cut of 19.1 mi-cron wool when they shear every eight months.

SUPERIOR WOOL MERINO, Tintinara S.A. Offered 100 Sold 92 Top \$7,800 Average \$3,003.



That mighty average! Such a meteoric rise from the beginnings a mere fourteen years ago. Procuring top genetics from the obvious two choices initially - Wallaloo Park & Leahcim add Gunallo to now producing its own impact sires, this stud keeps on advancing by the year. Being a member of the Superior Wool Syndicate that I instigated over twenty years ago has also had obvious huge advantages.

Twenty actual registered buyers at the 2021 sale made sure things stayed buoyant throughout the 100 lots penned. Gunallo 170295 progeny were in action again and threw half of the first twelve on offer which on paper are lotted accordingly - by quality. Justice prevailed in that very sire producing the day's top seller.

Top Price & Top Pick: Lot 5 \$7,800 SWM200218 (x Gunallo 170295) made the top dosh 'cause he real-ly was the standout of the day. Rarely do I circle a lot number in my catalogue three times such was his outstanding quality. Bold, lustrous crimp, of great staple length and a top carcass and sold to the best stud in the Riverland encompassing the Mid North, CPL clients, Brenton and Penny Kroehn's, Borung Poll, Waikerie S.A.

There were ASBV figures available on the day but not in the catalogue so recounting on all numbers is now hard and can only report here on a portion of what I actually wrote in my catalogue on the day. Add the fact that I'm not searching Sheepgenetics for the stats on every ram I mention. Fuck I'm 61 now you know! This bloke though was a PP with a YWT 11.2, YCFW 23.0 & 18.3u 2.8sd 15.3cv with a realtime EMD OF 49mm & FAT 8.0mm which is up there might I say!

Classer's Pick: Lot 8 \$6,000 SWM200070 (x Glenlea Park 180173) and bought by long standing CPL clients Colara Props, owned by Kevin Munro, managed by Aaron Freeman, Overseen by Wardy and TJ and classed by yours truly. This ripper had the boldest crimp on show of any ram I classed over the whole year. An old fashioned 50's count at 18.3u under well fed conditions is the industry's future as it represents so many positives across so many traits! I like the fact that not many North East of this stud understand the benefits!

Classer's Pick: Lot 17 \$4,600 SWM200190 (x Gunallo 170295) and bought well by CPL client, Rob Germein, Port Vincent S.A. Another boldy with a great micron of 18.9u add EMD 46.5 FAT 8.0 and a realtime GFW% 123 to match

his big time staple length and extremely safe and balanced density.

Classer's Pick: Lot 40 \$6,000 SWM 200976 (x SWM1859) and procured by Quality Wool's Dave Witten-bury for a mystery buyer that may be the state's worst kept secret! Try these outstanding yet typical Objective measurement figures: 17.6u 3.2sd 13.3cv & 0.1. Silk that is! Dave also bought another six or so for the underground.

Classer's Pick: Lot 67 \$3,400 SWM 201129 (x SWM Syndicate) and secured by CPL clients, Hansen Farms, Coomandook S.A. This screamer had a backend that was chumpy and tramlike! Now try these figures as a testament to sticking with the plan - in particular in regards to micron retention. 18.2u but 2.2sd 12.2cv 0.0pf yet still had a GFW% 106. Those additional measurements usually reserved for historically fine wool specialists from the New England!

Volume buyers important here and no disappointment with that on the day. Peter Burge, Padthaway S.A. on hand for around a dozen. Richard Storch, Bordertown S.A. with eight, Peter Blacket, Wynarka S.A. with the same, Vanesa the Hooper with at least six but Hansen Farms under the custodianship of Andrew and Joanne Hansen with son Daniel led the way with thirteen ram haul.

GUNALLO, Pinnaroo S.A. Offered 100 Sold 99 Top \$14,000 Average \$2,950



Patience and tenacity prevailed with the Gunallo fraternity and their loyal customers in lieu of the restrictions that were in place due to 'the bug.' An Inspection Day for Victorians-only on the Victorian side of the border where Gunallo is located and then an In-Spud-Shed Ram Sale on the S.A. side of the fence for South Australians who hadn't seen much of the stud until that very day! Potential Victorian and NSW buyers could purchase only by that great sale saving platform, AuctionsPlus or via S.A. connections.

And the poll rams on display ... immaculate!

So good was the quality depth that a ripper fella 1/3 the way through the lineup actually topped the sale!

Lot 31 \$14,000 GUN200703 (x Gunallo 473) was bought by Duane Symonds, McPiggery, Lameroo S.A. that could be a top end Merino stud tomorrow if they had the need! This bloke was looking a little off col-our at cataloguing day hence lotted later in the sale. He came good by sale day and should have been in the bloody Classic as team leader!! An elite allrounder at 114kg with a top end YCFW 33.6 & YSL 14.0 and a backend like Clive Palmer.

Classer's Picks: Lot 4 \$11,500 GUN200965 (x Leahcim 192259) and sold to CPL client's Westwood Poll, Cascade W.A. Very deep bodied and square with the good gear coating a great supple skin with high end ASBV's: YWT 10.4 YFAT 0.9 YCFW 34.7 YSL 14.6 YFD -1.4, 111kg's and a PP.

Lot 2 \$8,000 GUN200853 (x Leahcim 192259) sold to Rob Coutts' Ioness Poll near Ararat Vic. with the great realtimes of 17.1u 2.5sd 14.6cv, a PP with YWT 8.9 YCFW 30.0 YSL 17.7 YEMD 0.0 YFAT 0.4 and yet another big time backend.

Lot 35 \$3,800 GUN200638 (x Gunallo 460 'Sir Cumference') bought via CPL for client Paul Schaeffer in share with Shannon Larwood, Buckleboo/Kimba S.A. More lustrous glory here with a body weight of 116kg add YCFW 33.7 YSL 12.0 YFAT 0.4 & PP.

Massive support from the Brewis family's, Blairgowrie Props, Ararat Vic with a big haul of 26 polls across the sale averaging \$1,770 with the pick at Lot 6 for \$2,500 with the boldest crimp in the catalogue, a YSL 16.6 and very well built. The Dabinett name was strong with two families supporting very well with Wade, Longtrail, Parilla S.A. securing eight and CD Dabinett with six. Glencoe, Parilla S.A. and the Smith clan from Yanac Vic. bought ten between them.

LORELMO POLL, Walcha NSW Offered 97 Sold 97 Top \$5,500 x 4 Average \$2,551



Such a rewarding sale for the Cordingley family following up a better by far season compared to the horrendous version the year before and a huge quality depth with the sale lineup. The carcass trait per flock micron/fleece weight (genuine superfine) is spot on here due to diligent breeding strategies via the generations of Cordingley principles.

It's no coincidence now that for over a year now there is staggering monetary reward for quality fibre particularly in this state for young wools that are in the 17.5-16.0u territory. At Lorelmo and the list of their supportive clientele, the whole flock is in this micron category so champagne abounds! Add to this, stock here are now unmulesed adding another potential of 200-250c greasy as I write.

Before we talk about top prices and Classer's picks there's one entity that deserves an accolade and that's Steve Bulmer, Bolivia Station, Bolivia NSW who at day's end had secured twenty six polls from the auction lineup. Unlike many large orders and due to an incredible sale, there were no bargains either - just top quality, fine woolled snorters!

Top Price & Pick #1 \$5,500 Lot 6 LOR200411 (x Gunallo 180009) bought by CPL clients, the Andre family, Kangaroo Inn S.A. and loaded with all the good things add 17.3u & 2.8sd that helped this family only just recently received 2,729c greasy for ten bales of their finest. Top Price & Pick #2 \$5,500 Lot 28 LOR200272 (x Lorelmo 171000) bought by PD & VC Nicholas, Walcha NSW with excellent staple structure and density with 17.2u 2.3sd & 13.6cv & GFW 108% should cover it for explanation.

Top Price & Pick #3 \$5,500 Lot 30 (x Lorelmo 171000) bought by JF & AJ Hunt, Walcha NSW at 17.5u 2.4SD 13.9cv & GFW 112% with extreme whiteness and

silk like quality. Top Price and Best Pick #4 \$5,500 Lot 31 (x Lorelmo 160172) and again sold to the Andre Family S.A. If there were two other places for this bloke to go it would have been kept as a reserve or the stud's first Classings Classic ram sale entry (in NSW guise). Outstanding skin here punching out exotica in most fibre areas including staple length, density and softness - 17.8u 2.8sd & GFW 104%.

Last Classer's Pick! \$3,500 Lot 85 LOR201426 (x Lorelmo Syn 7) and bought through CPL for Brian Wilson, Ballarat Vic. with some of the day's best numbers to match the same with the skin quality. Try these numbers: 17.6u 2.0sd 11.2cv yet unusually matched with a GFW 135%!! Historically objective measurement numbers like these belong to the light cutting end of most lineups.

New CPL client Scott McCansh, Deepwater Station, Deepwater NSW lent great support scooping up four beauties including a very good Lot 64 LOR200027 (x Lorelmo 170602) that I could have easily bought for either the Andre/Wilson combo had I not nearly finished their order at that moment: 17.6u 3.0sd 16.9cv & GFW 116% aided the ease of selection.

The Flynn clan were great with their ten ram purchasing support as was Morella with around six and John Beyman, Uralla NSW with four competed the multi purchasers.

RIDGWAY POLL, Lameroo S.A. Offered 152 Sold 152 Top \$7,200 Average \$2,351



What a consolidating day for the Ridgway family in entering their largest auction team in my memory yet still recording a very respectable average at \$2,351. Considering the state of the nation with the dreaded 'bug' doing its best to interfere with such days, you can't commend the AuctionsPlus platform enough for it's sale saving attributes! Bids came through thick and (nearly) fast as online bidding competed with the locals present on the day.

Top Price & Pick \$7,200 Lot 11 RID200110 (x Gunallo 170295) bought by Robin Schwartz's 'Pindari', Waterloo S.A. and looked the goods mind you. Crimp plus and a great allrounder with fluid nourishment most people thought he deserved the dosh. Realties of 19.2u 2.5sd 12.9cv 0.1pf hints at a balanced fibre quality tagged with something that Gunallo 170295 does very well and that's length and density reflected by YCFW 27.5 YSL 13.6 along side of YWT 7.6 & YFAT 0.3 add a realtime EMD 45.0mm.

Special mention to multi ram purchaser Craig Graham, Glencorrie, Sandilands YP SA, who not only picked up eighteen rams across the sale length but enormous quality along the way. This haul included Lot 1 \$6,000 RID200019 (x Gunallo 170295) with a backend like wrestler Vera Kromskyhence a YWT 8.4

Classer's Picks \$6,000 Lot 4 RID200065 (x Flairdale 190015) sold to CPL clients, Oigle, Sonya and Ja-mo Irwin, 'Balah', Burra S.A. Try these numbers to match the quality fibre certainly not bred amongst that traditional breeding

patch not far away! 16.9u 2.5sd 15.0cv 0.0pf tied in with a balanced YCFW 21.6 & YWT 8.8 and loaded with excellent fibre exuding from a supple skin. Classer's Pick \$6,000 Lot 78 RID200157 (x Gunallo 170295) bought by Aaron Freeman on behalf of Kevin Munro's 'Colara', Colebatch S.A. as a ram breeder for the sizeable merino flock of great quality. Due to his enormous fleece weight potential this sire will be carefully used over a group of low micron animals that may lack a bit of fibre density. At YCFW 28.4 and 18.4u realtime, nothing else should be lost with that style of joining.

Classer's Pick \$1,000 Lot 93 RID200224 (x Ridgway 180131) and bought by the six or seven excellent picks that CPL clients, the Johnson family's Mt. Boothby, Tintinara S.A. procured on the day. Possibly the boldest crimp of the day and matched with a 18.6u 2.5sd you know the drill 13.7cv & 0.1pf with YCFW 26.4. Yep there were a few numbers missing here but this type of animal sets these studs apart from their traditional counterparts and caused the original sensation of freeing up skins as to expose the most elite as our great fibre can get to.

Can't stop here due to the mention of another bulk purchaser, GNB Investment, Lameroo S.A. with a big grab of twenty rams to average nearly \$1,000. Interstaters were prominent via AuctionsPlus that included all of the favourites, Simon Brady, Rhymney Vic., Tim Philip, Maroona Vic., Stephen Allen, Goroke Vic., John Lamb Pastoral NSW and add new client Daybron Farms, Wongan Hills W.A.

NANTOURA POLL, Wharminda S.A. Offered 109 Sold 109 Top \$5,000 Average \$2,213



Hell of a sale this one in the fact that 109 rams was always to be a risk due to being the most ever lotted in Nantoura's main auction. History obviously suggests no risk in the decision as not a ram was left at auction end with the sale recording a record gross. There's no guessing at just why this place has ascended above many other rival studs though. Early adoption of ASBV's going right back to Rampower and associated numbers based breeding directives, exploring leading 'numbered' genetic studs, understanding that bold crimp is the only crimp that is micron retaining/reducing, paddock reared except for a handful prior to EP Field Day and Classic sales and ... a bloody great likeable family that welcome all that is thrown at them at the merino level, dissected, then the best of the guff retained and then utilised at stud level.

Top Price & Pick \$5,000 Lot 13 NAN200186 (Ridgway Advance 180251: Classic'19 @ \$8,000) sold to new CPL client, Pat Hannan, Cockaleechee S.A. who totally gets the bold fibre, supple skin association and proceeded to secure the slipperiest skin on show! Bold yet silky soft at 16.5u reflected by

YFD -1.3, safe density at GFW% 109 assimilating with YCFW 19.0 and the longest staple in the house with YSL 17.7. This fella will cross over Pat's 'tight' mob which are safe enough yet a hangover from a previous genetic.

Classer's Picks \$3,000 Lot 1 NAN200454 (x Sohnic 170634) in Lot 1 for a reason and sold to EP Livestock's own Richard Hill. Fibre here from planet Exotica reflected by 16.9u 2.3sd 13.5cv & 0.0 add great carcass imaged by a chumpy back end with YEMD 1.4 add a PP on the poll gene side of the ledger sug-gests \$3,000 one of the day's bargains by day's end. Lot 3 \$4,200 NAN 200741 (x Leahcim Syndicate) and sold to CPL clients the Ed Hunt clan, Wharminda S.A. with a backend like the stud principle! YCFW 22.6 YEMD 1.0 YFD -1.3 YSL 11.5 at 16.7u & 2.8sd suggests more elite fibre.

Lot 15 \$4,200 NAN200323 (x Terrick West Syn) and bought by John Sampson, Kimba S.A. was one of ten beauties he picked up on the day to average \$2,800. This fella was a potential stud reserve except for one slight blemish (PH) which kept him out of that high calibre section of the stud. YCFW 27.6 YSL 19.2 YFD -1.3 YEMD 0.5 may suggest how good this bloke was! Lot 28 \$2,800 NAN200275 (x Sohnic 170634) and sold to CPL client, Tim Ottens, Wharminda S.A. My catalogue on review suggests, white plus, style plus, long plus and a carcass of great width and depth reflected by YEMD 1.1.

Lot 85 \$1,500 NAN200667 (x Brookdale 014012) I bought on behalf of (Dirk) Stevens Farming, Seymour Vic. amongst an order of twenty two via auction and private selection. This fella so late in the sale lineup expressed all that Dirk requires for his large non mulesed merino enterprise - plain/bare heads (fertility), plain body (mulesing/fly resistance) of good conformation (natural survival trait) and better micron as to capture the rewarding finer end of the market with young stock.

Not unnoticed, Clay Henderson, Mangalo S.A. picked up fourteen rams as did the Agars' Tungatta Station, Sheringa S.A. That's a big wing of animals to only two supporters! There were 24 registered buyer on the day with every one of them taking at least a ram home which is a statement on its own!

O'BRIEN POLL, Kyancutta S.A. Offered 117 Sold 100 Top \$10,000 Average \$2,020



The O'Brien Poll Merino stud is in good shape as is the Dohne version yet it was the merinos that stole the show on sale day at the Wudinna Showgrounds. The pure merino version was the highlight of the day although many of the 1/2 cross and even a few pure Dohne actually made you look twice. It's not that easy to create that great Dohne, chumpy backend with supple, free skins yet a few exhibited on the day did just that.

But it was one pure merino that stole the show with a backend similar to that of the Dohne variety.

Top Price & Pick Lot 2 \$10,000 OBR200557 (x Ella Matta 170274) and sold to CPL clients, the Keller boys, Ramsgate Poll, Tintinara S.A. There was a reserve price set on this ram due to a rapid fire discussion between Darren and myself sale morning, that he was possibly the best ram the stud had produced! With his outlook and structural bonus's, backed up by enormous ASBV's for growth, Ramsgate relied totally on my judgement of his value and worth.

Realtimes of 19.0 2.5sd 13.1cv & 0.6 with GFW% 117 & Body Weight of 116kg backed up with these beauties for carcass & growth. PWT 6.9 > YWT 8.4 > AWT 8.5 (perfect! We don't need YWT/AWT at 14!) aided by YEMD 2.1 & YFAT 1.0 add EBWR -0.9 & PP probably reveals the attraction! YCFW 13.3 YSL 13.3 is balance enough when talking about this type of animal. Plenty of fleece weight and staple length in RamsgateWorld.

Classer's Pick Lot 8 \$4,000 OBR200757 (x Caroonboon 181395) and sold to Kim Murray of LG & KL Whillas, Green Patch S.A. with super aligned fibre and all of the typical O'brien goodies! GFW% 128 with YCFW 30.1 ACFW 30.1 reflects fleece weight predicability at it's very best! DP+ 194 YEMD 2.1 YFAT 0.4 and the excellent realtimes of 19.2u 2.3sd 12.2cv 0.0pf gives you a fair idea of just how good that skin was there Pete! And that backend ...

Lot 9 \$3,200 OBR200484 (x Caroonboon 181395) and sold to CPL client, Bruce and Cathy Heddle, Minnipa S.A. with more exotic fibre with GFW% 124 backed up with YCFW 37.0 ACFW 41.0 (rare) & MP+ 181.

No sale without loyal support from the regulars - Tye McKenna, Spud Murphy, Kenny Pastoral, Rogers family, Kopi West, Omeroo, Glenwyn were huge support with multi orders and realistic budgets as to en-sure the day's competition and success.

HYNAM POLL, Longwood Vic. Offered 50 Sold 40 Top \$4,000 Average \$1,764



I can't get to all of the On Property Sales that I'd like including Classic Ram Sale Supporters, Kevin and Tracey Hynam's, Hynam Poll Vic. I asked their daughter Victoria if she could put a few paragraphs together in relation to the sale and I thank her for her great effort as follows ...

"Hynam Poll Merinos had a very successful fourth On-Property Ram Sale in September 2021. Selling 44 of the 50 rams offered, attracting 8 new buyers and many existing clients. Bulk Buyer at the sale was Gordon Addlem, Bathurt Downs, Serpentine buying 5 rams.

We gained a top price of \$4000 and an average of \$1764. These results validating Hynam Poll Merinos aim to produce white, elite wool on a non-mulesed, robust, structurally correct and meaty frame.

Top Price Lot 2 \$4000 HYN200586 (x Ridgway Advance 170116) Sold to James Dunn, Euroa Vic. PWT 8.3 YWT 9.4 YCFW 24.8 YSL 12.2 YEMD 1.2 YFAT 0.2 with 20.0u 2.8sd 13.9cv & 105kg.

Kevin's Pick Lot 7 \$3000 HYN200515 (x Ridgway Advance 170116) Sold to Ninuenook Farms, Quambatook Vic. This fella had a staple length of 120mm @ 7 months wool growth in wasn't why Stud Advisor didn't select him for Classic'21!! PWT 7.3 YWT 8.2 YCFW 24.5 YSL 11.1 with 19.5u 3.1sd 16.1cv at 108kg.

Ewe Lamb Joining 2022

Out of 600 ewe lambs, drafted the bottom 150 off visually, targeting 45kg plus body weight. On the 1st of February at 10 months of age, 450 were joined with 3% mature rams for 6 weeks on an oat stubble and self feeder of faba beans. They were scanned on the 10th of May'22 with 65% of them in lamb. This is our best ever result achieved joining ewe lambs.

CALCOOKARA POLL, Cowell S.A. Offered 99 Sold 99 Top \$6,500 x 3 Average \$2,584



What a great sale this was after a few years of some tougher moments for Brenton and Jane Smith including droughty conditions, a seriously poor A.I. result and some below par lambing results from top sires. It was full of atmosphere with returning clients and newbies. Plenty of fluid nourishment across all families including progeny from new trial sires, Richmond and East Loddon NSW.

Top Price #1 Lot 5 \$6,500 CAL200057 (x East Loddon 062 A.I.) and bought by Kim and Jake Murray of LG & KL Whillas, Tootinella S.A. A very square and deep sided ram that shone on the day. GFW% 119 18.9u 2.7sd 14.3cv & 0.2pf.

Top price & Classer's Pick #2 Lot 7 \$6,500 CAL 200012 (x Pepperwell 3220) secured by David Foster, Tallala Trust, Louth Bay S.A. A finer crimper here yet full of fluid nourishment and softness from a great skin. Look at these typical Calcookara realtimes: 18.2u 2.3sd 12.8cv & 0.2pf, EMD 42, at a balanced GFW% 104 gives a fair idea on the direction David is taking. Young wools in the 17u and finer part of the market are being rewarded at last and the chase for the finer end of and already fine wool stud will see him right!

Top Price #3 Lot 10 \$6,500 CAL200065 (x East Loddon 062 A.I.) and again bought by David Foster, and excellent GFW% 121, an EMD of 40mm and 18.9u 2.6sd 14.0cv & 0.6pf may give you an idea of his density and makeup.

Classer's Pick Lot 13 \$4,500 CAL 200138 (x Hynam Poll 200138) and bought by new CPL client Rich-ard Strauss, Cummins S.A. I ranked this ram well on the day yet at the first classing at the Strauss family's Green Patch property this fella popped up and wow what a super sire! Fluid white and super long with silk like qualities on a frame that resembled that of a Dohne!

Another three Classer's picks of the day didn't actually sit in the auction pens but were on display in the young Reserve pens away from the sale arena. The East Loddon sire, introduced via A.I. really did a great job and really clicked with specially selected Calcookara ewes.

They exhibited all of the traits as to the reason semen was bought in the first place: EMD Fat & Growth. Not that Calcookara animals totally lack in this area but there is even extra measured oomph from this stud which have been concentrating on growth traits for a long time.

The very important bulk buyers - Sophie Nuske's Hillsea Station, Elliston S.A. led the way with a nine ram haul including one of the best wools in the joint, a handy \$2,600 pickup in Lot 17 and bred by Pepperwell 3220. Huge length, whiteness and a stark off the page crimp makeup.

The enjoyable Byerlee family and big Calcookara supporters from Orroroo S.A. bought eight to \$2,600, Peter Puckridge, Cummins S.A. seven and averaging close to \$3,000. Bruce and Josie Hunt, Mundulla S.A. with six and the previously mentioned Strauss family with five all up.

CHALLARA POLL, Dandaragan W.A. **Offered 120 Sold 100 Top \$4,800 Average \$1,400**



I'm Classer to three and a half studs in W.A. with Challara the last one that grabbed me to hone their mighty flock into a direction that will see it last for many years to come. To be honest there ain't a lot to do in that regard where the previous fella, Jim Watts, had many things in place as to make my job less chal-lenging compared to some I've taken on over the years!

There's a huge inherent carcass trait factor around here plied in with some of the longest staple length in the country. One consideration with my classing is to amplify more so the softness of the skin which doesn't always fall into line with early growth, high AWT stock.

Top Price and Classer's Top Pick! Lot 3 \$4,800 and sale topper CH2002184 (x Challara Syndicate) and bought for CPL's latest new stud in creation Coleburra Poll, Culburra S.A (formerly Concorde Poll). This fella was hard to fault in the carcass department and skin type and perhaps should have been retained in the stud or at least sent to Classic'21!

Bold crimp of course with 20.3u 3.0sd 14.8cv & 0.2pf & PWT 7.3 YWT 9.3 YEMD 0.0 YFAT 0.4 YCFW 21.9 & YSL 11.1, this guy can only maintain or hopefully add to the excitement already on display at the Ferguson family's new stud thanks to infusions of Keri Keri and Mumblebone over a predominantly Gunallo based flock.

Classer's Pick Lot 74 \$3,900 CH201746 (x Challara Syndicate) a PP and had the second best bit of fibre in the whole sale arena and sold to the Walker family, Tambellup W.A. after a bit of competition from yours truly who is still kicking himself that he didn't grab him for a multitude of clients! A PP with 19.9u 3.0sd 15.1cv & 0.2pf add ASBV's of PWT 4.7 YWT 7.5 YMD 0.5 YFAT 0.3 YSL 11.3 YCFW 21.8 & YFD -0.9.

Lot 90 \$2,400 CH200560 (x Challara Syndicate) for Netallie Station, Wilcannia NSW with a lot of personal-ty and even better figures to match this bold crimper: PWT 6.0 YWT 8.7 YEMD 1.1 YFAT 0.6 YFD -1.1 at 18.6u.

Andrew Kelly, Rubicon Trust, Badgingarra W.A. was the leading bulk purchaser with fourteen and averaged over \$1,500. I bought nine rams all up for Netallie Station, Wilcannia NSW and Aston Station, Pooncarie W.A. with a focus on early growth to cross with their already good frames and outstanding fibre quality.

FOREST SPRINGS, Joel Joel, Vic. **Offered 72 Sold 59 Top \$9,500 Average \$2,139**



It's not easy to get to all of the sales that you would like to and this joint is another one of those. Bruce Dean's Forest Springs stud has certainly risen to greater heights of late with some excellent sale results at recent Classic sales as well as year by year improved sale results at home. I thank the Stock and Land's Alastair Howie for permission to mostly reproduce his capture of the day here.

"A larger offering of rams at Forest Springs Merinos sold to strong demand, with the average jumping \$355 to \$2139 and a top of \$9500 being reached. "I'm very happy, great result," Mr Dean said.

He said the catalogue was up from 60 rams in 2020 when 46 rams sold at auction and that this year's clearance rate was terrific, with a number of rams that were passed in under the hammer being sold immediately after the auction. There were a number of new buyers including a couple that normally sourced rams in NSW but purchased locally instead.

Mr Dean said people were looking for well-balanced sheep. "We think we have done that, improving the carcass without losing on the wool, and the feet are still good and we haven't lost sight of structure," he said.

He said the dominant sire in the catalogue was semen used by Wallaloo Park 181491, with 21 of the 72 rams in by the ram. He sired the top-priced ram that sold for \$9500 to Joe Peacock, Landsborough West.

Lot 11 was a 19.9-micron ram with a standard deviation (SD) of 2.9 micron, comfort factor (CF) of 99.5 per cent, a post weaning weight (PWWT) of +3.5 kilograms and yearling weight (YWT) of +5kg.

New buyer Dave Bibby, Maranui Pastoral, Tatyoon, bought six rams including the second top-priced ram at \$6250. The ram was also by WP 181491 and showed measurements of 19.8 micron, an SD of 3, CF of 99.6pc, PWWT of +6.5kg and YWT of +7.7kg.

Mr Bibby said they normally bought rams from NSW but the pandemic had forced them to look closer to home. He said they had kept an eye on the Forest Springs sheep and liked the stud's bold crimping wools.

He bought six of the first 20 rams on offer at an average of \$3916, including Lot 1, an 18.9-micron ram by Wallaloo Park 170198, at \$4500, and Lot 20 also at \$4500, with an 18.6-micron fleece, and a 3.1 SD, CF of 99.5pc and PWWT of +3.1kg.

Lot 4 of the sale, a 19.2-micron ram by WP 1810491, sold for \$6000 to account Wilkinson, Joel South Vic. The ram had an SD of 3.3, CF of 99.4pc, and positive numbers for PWWT at +5.1kg and YWT of +6.5kg. SW Martin, Concongella, Vic., paid up to \$3500 for three rams, with the top being Lot 7, a ram by WP 170198 with an 18.6-micron fleece, an SD of 3.1 and CF of 99.1pc.

Regular buyer, BJ & GJ McClelland, Emu Vic., bought three rams to a top of \$3250 for Lot 18. The ram was another sired by WP 181491 and had a micron of 18.5, an SD of 3.2 and CF of 99.5pc. The ram had a +7.5kg for PWWT and +9.7kg for YWT.

JA & JJ Start, Crowlands, put together a draft of three rams with the top being \$4000 for Lot 45, a ram by Mumblebone 130850, which showed figures of 18.8 micron, an SD of 3 and CF of 99.4pc. Buyer of two rams was Mathew Hall, Joel South, who paid a top of \$3250 for Lot 24. The ram was also by WP 181941 and was showing an 18.2-micron fleece with an SD of 2.9 and CF of 99.7pc.

PIMBENA, WIRRULLA S.A.

Offered 64 Sold 55 Top \$4,700 Average \$1,974



You have to admire studs like Pimbena and Borung for being successful operations in generally unfamiliar terrain as far as Merino studs are concerned. Often under adverse conditions, Les Hamence, principal to Pimbena Poll always raises to the challenge and continually rocks up with very satisfying sale teams with last year's effort no exception.

Top Price: Lot 23 \$4,700 PIM200557 (x Pimbena 180417) So the top priced ram for the day down in lot 23 could be seen as a cataloguing misdemeanour but as classer I'd like to call it tactics!! Miles Tomney is an avid Pimbena supporter and knows his stuff and competed heavily to make sure he latched onto this one - YWT 11.6 YSL 16.0 YEMD 0.3 with a balance YCFW 23.0 with the specky real-times of 18.7u 2.8sd 14.7cv & 0.0 gives you an idea of the wool quality hey Nev! Sheezy nearly forgot - 118kg body weight added to the appeal ... unless you were shearing the phucker!

Classer's picks: Second Top Price: Lot 9 \$4,200 PIM200511 (x Pimbena 170509 x Ramsgate 140390) and secured by Pittaway Farming, Wirrulla S.A. and arguably the best ram in the catalogue with this fella well marked in my catalogue. A few reasons why naturally. A 118kg poll ram from the bush is quite a sight to be had especially when it tangles with a great supple skin punching out elite fibre. 18.4u 3.0sd 16.2cv 0.9pf sounds like great realtime numbers but add YWT 12.6 YSL 16.0 and a balanced YCFW 21.0 to the mix and well ... Bob's yer Uncle!

Lot 5 \$3,000 PIM200035 (x Pimbena 160141 x Leahcim 100858) and bought for part time CPL client, Andrew Mahar, Ceduna S.A. Great bit of gear here including 18.8u 2.8sd 14.7cv & 0.6pf with YWT 9.7 & YCFW 23.0 and a skin like a Labrador pup hey Jim! Lot 18 \$2,400 (x Pimbena 160141) and scooped up by Miles Tomney, Streaky Bay S.A. A twin coated with luxurious fur, Miles got away with one of the purchases of the day here. YWT 8.2 YSL 13.0 YCFW 22.0 & YEMD 0.4.

Miles Tomney was great with his support across the sale which included a ten ram haul, including another ripper top ender at Lot 40 with a YSL 20.0! as were the Pittaways with five. CPL's and Pimbena's new station client, Tom Joyce, 'Mullaquana', Whyalla S.A. was good for a hand picked seven and Brad Clough-ton, Yallunda Flat came up with Pat Hannan, Cockaleechee S.A. for a squizz and went home with five and Pat with two. Craig Rule from just down the road got in early with consecutive lots, 3 & 4 at \$2,400 & \$3,200.

I secured five rippers for Netallie Station, Wilcannia NSW with Jame's McClure's chase for growth including a well figured Lot 11 @ \$2,000 PIM200207 (x Hynam Poll 181128) and try these: YWT 6.3 YSL 11.0 YCFW 27.1 YEMD 1.2 & DP+ 167. The three for Stevens Farming, Seymour Vic. were exactly what he chases, top fibre, bare head and lighter on the points thus highly fertile and unmulesed, yet full of production potential.

FLAIRDALE, COOKE PLAINS S.A.

Offered 74 Sold 74 Top \$7,400 Average \$2,613



The Flairdale On Property'21 sale was I believe the studs best since the big move to Cooke Plains years back and remembering back to the sale team look on the day, came as no surprise. The Lehmann's early adoption and understanding of ASBV's, its association via family with BreedElite and associated software sees the stud sit in a progressive nest. Add to that some wise choices in Sire and Semen purchasing sees this outfit going gun busters!

The first fifteen rams sold on the day averaged very close to \$4,000 such was the war like bidding frenzy of the top end 'competitors'! The Laske, Buchanan, Burgess, Paxton, Slape names is almost like an exclusive bidding club that sees no peers!

Top Price & Pick Lot 1 \$7,400 FLA200252 (x Flairdale 180015) and sold to the ever supportive Graeme Buchanan, Karoonda S.A. This fella nearly required to pens to fit him in! Very square and very deep, he measured as he looked: PWT 7.9 YWT 10.8 YEMD 0.8 YFAT 0.4 YCFW 25.6 YSL 15.2 & DP+ 178.

Classer's Pick Lot 3 FLA 200443 (x Flairdale 180015) and selling to another long serving supporter, Geoff Burgess, Gulnare S.A. Very square and chumpy backend here matched by some top end meat figures to back up the visual: PWT 7.1 YWT 12.9 YEMD 1.2 YFART 0.7 YSL 12.9 & DP+ 183. Lot 14 \$5,000 FLA 200118 (x Mumblebone 180088) and sold to the Kev and Rebecca Roberts, Cooke Plains S.A.. Just a good balance of figures here but one of the best skins on any ram I saw that week with huge staple length to back up the YSL 12.8.

Lot 38 \$2,600 FLA200444 (x Flairdale 180015 x Moojepin 120652) and sold to quality collector, Lee Slape, Coomandook S.A. PWT 5.9 YWT 7.7 YEMD 1.1 with a bold crimp with whiteness here.

Some big hauls here amongst the faithful - Trevor Laske, Orroroo S.A. latched onto nine, Dale and Deb Paxton, Parndana S.A. with a hard fought eight, the Bartlett family with seven, the Hannaford clan, Naracoorte S.A. with five and the same quality to Pete Battersby and Ben Nevis Vic.

Classic Sponsor

TRURO
AGENCIES

ELLA MATTA, Parndana S.A.
Offered 48 Sold 44 Top \$5,600 Average \$2,825



Nothing makes me happier than the Merino section of the Ella Matta On Property Sale out-averaging all of the other breeds! Ok, the gross or volume of rams is nowhere near that of the White Suffolks or those other things but this merino lineup looked a sensation. Wise selections of A.I. sires here over many years now has produced progeny with some of the best skins and ASBV's in the biz. White wools of fluid nourishment on meaty carcass abounds.

So, Top Price Lot 36 \$5,600 EM200060 (x Miramoona 140012 - top AMSEA ranked sire) topped the sale with many punters glancing my way as to why a sale topper could possibly be placed so late in the sale. I think it may have been on cataloguing day that Aphid may have started talking about the virtues of some of the whiskeys of the world when it came to lotting this bloke into a designated pen. I must have taken my mind off the job for that important split second and lotted him appearingly very late in the lineup. Either that or Jamie had enjoyed a night of the same discussion and was feeling a bit average in the office and totally misheard the ram's designated position! Yep that'll do ...

Anyway he looked the part way down there and sold to father/son duo John and Johnny Bell from 'Johnnyville Station' Johnstown, Tasmania. Greatest skin of the sale with just a slight blemish which kept him away from Stud Reserve status: YFAT 1.2 YEMD 0.5 & YWEC -65.6 which is absolute top gong for that trait.

Classer's Picks Lot 3 \$4,600 EM200084 (x Miramoona 140012) and I think sold to Mitch Wilson, Penneshaw S.A. If he didn't, he should've!! YCFW a massive 32.5 YSL a massive 21.7 and YWEC a massive -74.2!! Add a EBWR -0.9 and YFD -1.3 and a top skin/fibre package and well what can I say ...

Lot 5 \$4,200 EM200581 (x East Loddon 180062) and bought by the enjoyable Terry Howard clan from the tourist hub of Australia, Penneshaw, Kangaroo Island, South Australia! Try these numbers ladies and gents: YWT 9.1 YEMD 1.5 YSL 14.6 YFAT 0.6 YFD -1.4 EBWR -0.9 and a twin reared. Nice bit of fibre on the bloke too. They bought four across the sale. Lot 16 \$4,800 EM200193 (x Miramoona 140012) and sold to Alan Hall, near Emu Bay, KI with the whitest fibre in the catalogue. YCFW 28.7 YWT 8.4 YEMD 0.8 YFAT 0.7 YWEC -86.4 with a looked like YSL 16.3 to top it off.

BL&MJ Gregor, Parndana, bought seven rams to \$4600, averaging \$3157 and Simon Kelly, Parndana, secured five rams to \$4600, averaging \$3320. CPL clients Mitch and Ros Willson, Penneshaw S.A. bought around four including another Miramoona sired beast with a trait leading YFD -2.1 in Lot 31 and felt like it too! YSL 15.6 and YWEC -58.9 petty good too wouldn't you say!

WALLALOO PARK, Marnoo Vic., Offered 181 Sold 181
Top \$19,000 Average \$4,790



Due to 'that bug' it was not possible to attend the Wallaloo Park and Sohnic sales yet again in 2021 so for the following two reports I thank Annabelle Cleland (and writer Alistair Howie) for the permission of their use in Cullings'22 ...

"STONG bidding from across four states saw the 30th Wallaloo Park Merino and Poll Merino stud on-property sale average soar to \$4790 - up \$2059 on the 2020 sale - on a total clearance. The sale, on behalf of John and Jenny and Trent and Kate Carter, was conducted as an open auction and interfaced with AuctionsPlus.

The offering of 181 rams sold to a top of \$19,000 for Lot 1 via a phone bid on behalf of Simon and Amanda Bahr, Meadow View Poll Merino stud, Henty, NSW. Mr Bahr said not being able to see the ram in person, he relied on the expertise of Nutrien's Stephen Chalmers, as well as the accurate and reliable data that was available. "It was an easy decision to make with the data and the advice about what it would do for the stud," he said. He said the ram had a combination of heavy fleece weight figures and carcass figures as well as "a good safe wool for our area".

"I'm looking forward to seeing how he goes, particularly with his grandsire 422 in his background."

The ram was a double poll by WP 180820 with a 19.4-micron fleece, coefficient of variation (CV) of 15.9, standard deviation (SD) of 3.1 and comfort factor (CF) of 99.3 per cent. It had a top 20pc of the breed yearling clean fleece weight (YCFW) of +44. It had a Merino Production (MP+) index of 207 and Dual Pur-pose (DP+) index of 216.

The Heal family's Classic Pastoral Co, Wirrate, Nagambie, paid \$16,000 for Lot 16, a ram by WP180491 with a 17.8-micron fleece, a CV of 16.6, SD of 2.9 and CF of 99.1pc. Bidding through AuctionsPlus, Giranda, Dinninup, WA, paid \$14,000 for Lot 2, a son of WP180491.

Top-priced horned ram at \$9000 was bought by Greg and Campbell Penny, Gleneden Merino stud, Douglas."

A quick summary of mine from a bit of research ... CPL client, Wayne Girando outlaid \$14,000 for Lot 2 and Elliot Richardson, Mianallup Stud, WA paid \$10,000 for lot 3 for a WP170760 son. Rams sold for \$9,000 to Andrew Mosey, Andoma, Mundulla SA and to Victorian studs, Charinga, Toland Poll, Elmbank Poll, Carnoah Poll.

CPL's Karawatha Park, Buckleboo S.A. bought two 2 sires by WP170760 for \$7,500 & \$4,000 and CPL clients, Penrose Poll, Esperance WA \$6000.

Volume buyers included long term clients John & Danny Flanery, Boorowa NSW purchased 17 rams @ \$4,700 av and the Gorey family, Moulamein NSW 12 rams @ \$3,200 av.

The majority of the 14 new buyers were looking at ASBV's.

Classic Sponsor



SOHNIC, Marnoo Vic.
Offered 73 Sold 73 Top \$7,500 Average \$2,139



Another sale I couldn't get to so thanks again Stock and Land ...

"SOUTH Australian woolgrowers again dominated the top prices at Scott Nicholson and Greg Hose's Soh-nic Merino stud ram sale at Marnoo, paying top price and second top price. Strong bidding saw all 73 rams offered sell under the hammer to \$7500 and average \$2139, about \$100 above the 2020 average.

This year it was the turn of Josh and Sammie Hunt, Innisfallen Farms, Bordertown, SA, to top the bidding at \$7500 via AuctionsPlus. The ram was Lot 11 in the catalogue, a double poll, with figures of 17.6 mi-cron, a coefficient of variation (CV) of 16.8 per cent, a standard deviation (SD) of 3, and on the carcass side an eye muscle depth (EMD) of 38 millimetres and fat depth of 8mm.

The second top-priced ram went for \$6000 and was purchased by Jim Hunt, JD & SF Hunt, Mundulla, SA.

The winning bid was taken on AuctionsPlus for the ram that was Lot 1A, which had a 19.3-micron fleece, a CV of 15.2 and SD of 2.9. Its carcass numbers included an EMD of 40mm and fat depth of 8.5mm. Mr Nicholson said it was a good result, with a total clearance and higher average.

He said people came to the stud for its consistency in supplying balanced rams for wool and carcass.

He was grateful for the local support, as well as rams being sold to the north-east and Balranald, NSW.

DS & SL Irwin, Emu, paid \$4500 for Lot 5, a 17.9-micron sire with a CV of 17.3, SD of 3.1, EMD of 41mm and fat depth of 6.5mm.

E & J Wilkinson, Crowlands, bought three rams at an average of \$3666.

The top-priced ram in the draft was Lot 23 that made \$4750. It was a 21.8-micron ram with a CV of 13.4, an SD of 2.9, EMD of 41mm and fat depth of 6mm. Bretton Estate, Campbells Bridge, was a volume buyer, paying \$4000 on three occasions to average \$2708 across six rams. The \$4000 rams

included Lot 1, a 19.5-micron sire with a CV of 13, an SD of 2.5, an EMD of 39.5mm and fat depth of 6.5mm.

Lot 3 also made \$4000 and had a 20.9-micron fleece, a CV of 13.6, SD of 3, an EMD of 43mm and fat depth of 9mm. The third ram purchased for \$4000 was Lot 32, with measurements of a 20.7-micron fleece, a CV of 16.3, SD of 3.4, an EMD of 41mm and 6.5mm fat depth.

Regular buyer, Ben Nevis Farms, Crowlands, bought three rams to a top of \$3000 and average purchase price of \$2583.

Regular clients, Bibby Farms, Navarre, bought four rams to a top of \$2750 (twice), at an average of \$2437."

RIDGWAY ADVANCE, Bordertown S.A.
Offered 176 Sold 150 Top \$7,500 Average \$2,257



For any stud to commit to twenty six rams for the Classic Sale and a couple for Adelaide yet still have 176 on offer and sell 150 on the coldest day in living memory is an accolade to the quality of the outfit! Be-tween a serious online bidding cohort and those who were game to go outdoors, the sale rocketed along with all punters happy at day's end. Over 1/3 of the sale was sold to online biddersThirteen buyers securing 63 rams, some sight unseen.

Top Gong & Pick, Lot 14 @ \$7,200 RA200264 (x Supersire RA130082 x SuperSire Leahcim 100858) to CPL clients, Geoff and Sue Zacher, Coonalpyn S.A. to be used as a home ram breeder to maintain one of the best commercial flocks in the state! Actuals of EMD 46mm & FAT, a massive 9.5mm with one of the best skin/fibre packages in the sale, backed up by, get this, 18.0u 2.3sd 12.8cv & 0.0 will keep the quality tempo flowing. The Zachers have such a quality flock that it's probably no fluke that they have taken out the Karoonda Farm Fair commercially bred Top Three Fleeces, three years running!

Look at those fibre figures again - it's critical to keep in touch with just why Classic sales exist and Studs like Ridgway Advance are on top of the heap. It's all a balance yet there's an inclination to bypass fibre quality of late and go full bore into growth numbers leaving a lot of good work behind. Some studs out there never had fibre quality in the first place yet have stupidly high growth figures and look like another breed!

Classer's Pick, Lot 9 @ \$5,400 RA200359 (x RA140090) and secured by CPL clients, Stuart and Gavin Brophy, Tintinara S.A. with a skin to boot and try this Jethro - a sale leading EMD 52mm & FAT 8.0mm with a meaty, muscly backend with the slippery skin figures of 2.6sd 13.5cv 0.2pf suggesting predictability at 19.2u. The boys added another two rippers to this initial pickup.

Sure, traditional studs can hit the 19-18u area with current tests but way too often with out of kilter SD/CV measurements due to an awkward skin makeup. I enjoy the fact that 'our' studs are decades ahead with this style of skin breeding.

Classer's Pick, Lot 131 @ \$4,400 RA200623 (x RA421) and bought by CPL

for a duo partnership purchase in CPL client, Paul Schaeffer and Shannon Larwood, both from close to Kimba S.A. The boys were after a meat sire and that's what they got by jingoes - EMD 51mm & FAT 9.0mm but try the objective measurement figures which may just set this stud apart from most others in the state: 15.6u 2.5sd 16.3cv 0.2pf!! Pity I don't have the ASBV's from the day here but not being in the catalogue ...

All the same, that tangle of EMD 51mm and 15.6u (close to sale test - not March!) for any ram from any stud in this nation is an absolute rarity!!

The most important multi purchase brigade at any sale were a big part of the RA sale day. Gerard Voight and family, Cooke Plains S.A. bought fifteen averaging over \$2,000 and up to \$3,600. The unassuming Neville Rathjen, Birdwood S.A. who goes about his business less noisily than me and always picks up a mass of screamers need up with ten including a massive 120kg thumper at Lot 1 for \$3,800 with EMD 49 and ... 11mm of blubber! This fella stood so wide that the Ridgway's had to lease a pen from Monarto Zoo to slot him in!

I bought six chumpy beauties for the McClure's Nettalie Station, Wilcannia NSW add another three for Dirk Stevens, Seymour Vic. to meet his special request of non mules, white wool and light heads as to maximise fertility - true fact that bit.

Late in but here are the Caroonboon '21 sale results

75 Rams Offered: 75 Sold
Top Price Ram: \$6,400
Average: \$2,404
After Sale: 35 rams sold



Classic Sponsor

"We normally buy a trailer-load, so fourteen (Challara rams) just fit on a trailer if the wool is not too long..."

- Andrew Kelly, Badgingarra W.A.

LUCERNBRAE

Poll Merinos

Annual on Property Sale

Thursday 4th August 2022

Auction 1pm



Plain, wrinkle free rams
non mulesed since 2007
Less breech wrinkle

Elite wool
Average micron 18.5

ASBV'S -
OJD MN3 -
OB accredited

Keith & Judy Paech

0415 701 493

lucernbrae@internode.on.net

Find us on Facebook

CLASSINGS CLASSIC RAM SALE 2022

PLEASE NOTE NEW VENUE

(NEW) MURRAY BRIDGE RACING CLUB

219 BRINKLEY RD, MURRAY BRIDGE SOUTH S.A.



Monday 5th September

80 POLL MERINOS 80

Inspection from 10am with sale commencing at 1.30pm



"Poll Merinos and Poll Merino Studs specially selected for Classic '22 exhibiting bold crimp, carcass, fibre density and productive yet easy care skin attributes as to address the possibilities of a Mules Free flock, six month shearing, higher fertility and all the advantages that the plainer bodied Poll Merino has to offer."

Enquiries to: Bill Walker - Classings P/L Mobile: 0428 973 804

www.classings.com.au classing@internode.on.net FB: Classings: In the Race and Classic Merino Ram Sale



Wallaloo Park

MERINO & POLL MERINO STUDS



Mules free Merinos

31st On Property Ram Sale

200 RAMS

Thursday 29th September 2022

Sale Starts at 1pm - Inspection from 10am

Selling Agent



Glendon Hancock 0429 829 613
Ross Milne 0438 847 871
Sam Thring 0429 119 661



ALL WALLALOO PARK SHEEP
ARE APPROVED VACCINATES,
OJD MN3 & BRUCELLOSIS ACCREDITED

3% rebate to outside agents giving notice in writing,
24 hours prior to the commencement of the sale

Selling Agent



Damian Drum 0428 952 284
Stephen Chalmers 0427 908 831
Nick Farley 0427 529 335



John: 0427 501 431 Trent: 0427 776 114

info@wallaloo.com

www.wallaloo.com



MERNOWIE

POLL MERINOS

Annual On Property Sale, Marrabel
Wednesday 21st September 2022, 1:30pm

- FERTILITY**
Clients consistently weaning 120%+
- MATING 10-12 MONTH OLD EWE LAMBS**
100%+ Lambing Rate (long term average)
- ADULT EWES AVE. 7.5KG SKIRTED FLEECE**
19 micron average
- BRIGHT WHITE WOOLS**
Supplying rams to clients up to 750mm rainfall
- EWES HEAVILY CLASSED ON DO-ABILITY**
Culled on Dag Score
- RAMS RUN UNDER COMMERCIAL CONDITIONS**
No Feeders or Shedding
- STRONG EMPHASIS ON ASBVs**
Focusing on Pwwt, Ywt, Ycfw, Yemd + Yfat

Ian Rowett 0418 486 050, ian@mernowie.com
David Rowett 0419 839 280, david@mernowie.com

WWW.MERNOWIE.COM



Mernowie Fertility Drives Profit for Clients

Every ewe rearing at least one lamb annually is the aim at Mernowie.

Under the guidance of stud masters Ian and David Rowett a fertility program has been in place for over 32 years. All dry ewes are culled along with ewes that have a lamb and don't rear it (with a few exceptions for bad weather).

Benefits clearly observed are better temperament and mothering instincts along with increased milking ability.

A number of clients are regularly weaning 130% lambs. A large percentage of Mernowie ewes produce multiple births. One AI program that lambed in 2022 resulted in 168% live lambs.

The early maturity of Mernowie sheep allows for ewe lambs to be mated at 10-12 months of age which regularly achieves up to 90% conception with an average of over 100% lambs.

The significant increase in fertility has allowed for a higher turnoff of surplus sheep, with young ewe cull rates often approaching 50%.

Mernowie has embraced ASBV's targeting Pwwt, Ywt, Ycfw, Yemd, Yfat.

The stud is based at Marrabel in the lower north of SA with a medium to high rainfall. This is a challenging environment for merinos, especially when associated with higher stocking rates.

There is an emphasis on do-ability and for this reason rams are run under natural conditions with no grain feeders. Only a handful of rams are shedded so they can represent the stud at field days and multi vendor sales.

Wool quality is paramount with the entire flock falling into the lower micron range that is demanding very high premiums at present. Adult ewes now average 19 micron and hoggets consistently in the 17 micron range.

Mernowie is targeting sires to fast track progress towards a no mules flock.

Nantoura

ON PROPERTY AUCTION

Tuesday 30th August
100 Poll Merino Rams

CLASSING CLASSIC
Monday 5th September
3 Poll Merino Rams

Chris Prime - 0427289021



First sons of Nantoura 190061 available this year. Purchased by Ramsgate Poll Merino Stud, for \$20,000 at Classing Classic 2020.



Nantoura 020186 Top priced ram 2021, on property sale, purchased by Pat Hannan, Cockaleechie S.A. for \$5000.



LPM

EST 1966

LORELMO

poll merinos

LUSTROUS WHITE, BOLD CRIMP

SILK LIKE QUALITY WOOL
FROM A FREE SKIN

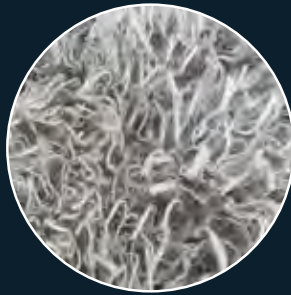
LOW MAINTENANCE, WRINKLE FREE

LONG STAPLE

FERTILE



Our door is always open



**OFFERING 100 POLL RAMS
RAM SALE - FEB 2023
on property "Topdale"
Walcha NSW**

Contact: Eddy Cordingley: 0429 486 380 or Bill Walker: 0428 973 804
eddy@lorelmo.com.au : maggie@lorelmo.com.au

www.lorelmo.com.au

POSTCARD

Are you going to see PENROSE?

Field Days

Katanning	Penrose
August 18th & 19th	August 26th

Sale Day bid on Auctions plus!

Esperance ← September 2nd

ewe will thank me later!
Baabara

Get in touch with
Bruce & Trudy ph: 0427 550 459
or
Thomas ph: 0438 657 739

Brucellosis accreditation #0571

National John's Program
NSW

MERINOSELECT
ASBV

Facebook logo

SWM

SUPERIOR WOOL MERINOS



Full information available on all rams. Also offering free 'In Yard' advice to clients.

15th Annual Ram Sale Friday 2nd September 2022

Inspection from 10:30am | Sale 1pm
On-Property "Gumburra Park", Tintinara SA

Offering 120 Merino &
Poll Merino Rams in main
auction.

(More private selections available)

Maximise your Gross Margins

Structure | Mobility | Constitution | Fertility | Elite Wools

Enquiries always welcome

Richard Harkness M: 0428 758 028

Email: richardharkness@internode.on.net



Westwood

POLL MERINO

CASCADE, W.A
FLOCK 601490



SELLING 70 RAMS

AT

ESPERANCE RAM SALE

- FRIDAY, SEPTEMBER 2ND, 2022

WESTWOOD FIELD DAY - FRIDAY 26TH AUGUST

Private sales thereafter - first in best dressed!

Scott Welke

Mobile | 0427 792 044

Email | scottwelke@bigpond.com





Follow us on Twitter



4th On-Property Sale



Friday, 26th August 2022

**OFFERING 140 NON-MULES,
GENOMICS TESTED, POLL MERINO RAMS**

Inspection from 10.00am - Auction 1.00PM

“Sangus Creek” 443 Old Boort Road, Serpentine

Simon Coutts 0498 724 850 Will Hooke 0428 228 444 Karl Hooke 0412 006 736

Ram Inspection Day • Friday, 19th August • 10.00am-3.00pm



CHALLARA POLL MERINO STUD

Easy Care and Striving Ahead

Displaying at **Dowerin Field Days** - August 24th - 25th

Offering at **Classing Classic '22** - Murray Bridge, SA - September 5th



Offering 120 Rams On-Property
Thursday September 15th 2022

Inspection from 10am. Sale starts at 1pm.

Lunch to be provided.

Our 2022 Challara Rams are Brucellosis Accredited & OJD Approved.

Lot 821, Koonah Rd, Badgingarra W.A

Peter & Emma Wilkinson

Ph: 08 9652 9340 | M: (Peter) 0427 427 691

Stud Classer: Bill Walker

www.challara.com.au



- Where Quality Comes First -



LONE GUM

POLL MERINOS

**CRYSTAL
BROOK,
S.A**

**FOR PRIVATE SALES CONTACT
Stuart Everett: 0427 362 801**

Classer - Bill Walker: 0428 973 804



HYNAM POLL MERINOS



**On-Property Ram Sale
Wednesday September 21st**

Inspections from 10am

Sale starts 12 noon

Sale in conjunction with AuctionsPlus
3% rebate to outside agents attending

check for updates on

Hynam Ag Pty Ltd
643 Carmodys Road, Longwood VIC 3665
Kevin: 0427 833 262
hynamkevin@gmail.com



**COLEBURRA
POLL MERINOS**

Inaugural On Property Sale



50 POLL MERINO RAMS ON OFFER
Friday 26th August 2022
239 Richardson Rd Culburra
Inspection from 10:30am
Sale starts 1pm



CONTACT

Chase Ferguson
0439 280 775

coleburrapoll@outlook.com

fb: Coleburra Poll Merinos

ig: @coleburrapoll



Stud Classer

Luke Schreiber
0429 817 274

Andrew Keach
0477 650 440

Bill Walker
0428973804



Featuring Mumblebone 191150 Sons

CLASSIC'22 POTENTIALS - RECENT SIGHTINGS ...



Forest Springs blitzed Bendigo Sheep Show including this fella, FS210169, Bruce Dean's #1 for CC'22. Elite fibre with YCFW 23 YFAT 0.4 YEMD 0.4 & PP. That's the master and the mentor keeping a close eye on proceedings!



Gunallo Poll also had a great day out at Bendigo including this fella proudly held by yours truly. GUN210431 will headline their Classic'22 team with a YCFW 30.2, YSL 12.5, PP and a skin/fibre package that will attract many.



Ridgway Advance 211437 hosted one of the best bold crimping fibres in the Bendigo marquee backed up with the above pictured great shape. A PP with YCFW 25.3 YSL 14.4 & YEMD 1.4 look out! Hynam Poll had their best Bendigo display ever. At



one stage Kev and Victoria Hynam thought they'd bred their best Reserve keeper ever. Next minute

he's their #1 for Classic'22. 210303 is a beauty all 'round. YWT 10.3 YEMD 1.74 YFAT 0.5 YCFW 25.6 YSL 17.0, PP & DP+ 190 should interest many!



WILLERA had a great debut in Classic'21 and this year's team will add to that success. W210043 will lead the way in Classic'22 with meat traits including YEMD 2.5, YFAT 1.2 with YCFW 26.3, PP & DP+ 201.



Superior Wool Merino will enter two beauties and both bred by Baderloo 170080. The pictured muzzle boy is 210541 features WWT 6.7 YWT 10.7 YCFW 22 & YFAT 0.6 with a bold crimp and a silky 17.7u.



Wallaloo Park 210622 is a beauty and I'm hoping like blazes we can get him to grace the pens of Classic'22. Shown here at Bendigo, his exotic skin and fibre qualities are supported by YCFW 31.6 YEMD 1.5 YFD -1.8 and DP+ 203. How about it Trent!



This isn't Ramsgate 210026 bred by Mumblebone 191150 that leads the trio of Classic'22 entries but a shot of the studs second on offer. I didn't get a body shot but the photo suggests just where this stud lies with fibre/skin quality.



Flairdale 210175 has now been entered into CC'22 due to the ram's natural bare breech attributes considering his unmulesed status and hints at what any Classic sale is all about. Quite stark here with one of the barest I've seen.



That fella at left represents just why I keep raving about Lucembrae's all round quality. That bloke is bred by Mumblebone 191150 and will most likely headline the eight entries from this mega outfit for Classic'22.



Classic Sponsor



This is 210164 at Classic'22 selection at Ridgway Poll on a recent cold morning! The 6-8 strong poll ram lineup will keep supporters of the stud extremely happy such is the lineup. The stud is one of our oldest supporters.



Lone Gum's 190056 typifies the inherent nourishment that has been a feature of the stud for decades. About four rams will grace the Classic'22 pens in September and will cause the normal stir amongst the punters such is the quality of this outfit!



Another stud to make a Classic debut this year will be the newly formed Coleburra Poll, Culburra S.A. of Chase Ferguson's and fiancé Bella overseen by the ol' boy Gary. The Ferguson's have been part of the Superior Wool Syndicate for years hence the quality is second to none. An infusion from Mumblebone 191195 has seen some exciting results.



Caroonboon 210224 is one of two beauties bred by CAR181395, the very good poll that sold to O'Brien Poll for \$18,000 at Classic'19. We welcome the stud back to the Classic sale after a gap from our sale due to the 'bug' and feel that 224 will be enjoyed by most.



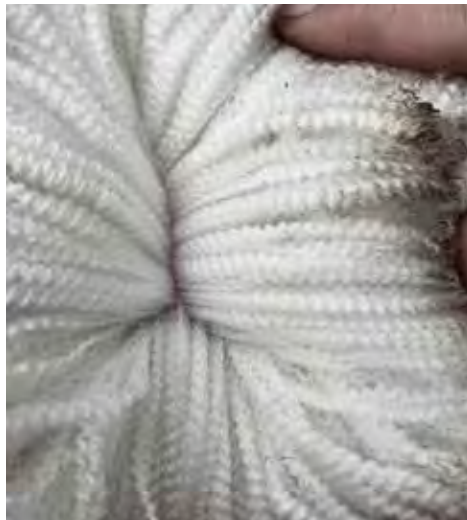
Debut studs at Classic sales have a habit of having a good day out and these two entries from local stud, Benefield Poll, should keep that trend in tact. Great skins and backends - 210035 bred by SuperSire Gunallo 170295 and the other, 210472 bred by Glenwood 191098.



Coddington Uardry are a welcomed return to Classic'22 with four goodies of pure white to appease fibre lovers from higher rainfall - two of them bred by a Classic purchase a few years back from Ridgway Advance.



Pimbena's two Classic'22 entries are both bred by Flairdale 190212 that was purchased at Classic'20 for around \$9,000. FLA210005 is a twin coated in the good stuff with YWT 7.9 YCFW 24 EMD 0.7 & DP+ 172. A lot to like with this pair.



Got to know Brett Jones through MLP meetings over the years which has culminated in a possible entry into CC'22 Ejanding 214592 I'm told is structurally sound and with fibre like this should command a lot of attention!



See you at Classic'22..



CELEBRATING 20 YEARS OF PRINT

(08) 8531 1035
hello@printcity.net.au

4 Rayson Street,
Murray Bridge SA 5253



**Digital & Offset Printing - Signs & Displays - Apparel & Uniforms
Packaging & Labels - Promotional Gifts - Graphic Design**

STOP THE PRESS!



Had three days of meetings Sydney recently encompassing all facets of the Merino Lifetime Production projects across the nation which are heavily sponsored by AWI.

I had the privilege of being part of the MLP Steering Committee and other more recent attachments that led to the national trial's debut and subsequent existence over a maximum seven year period.

As Classer to the Balmoral MLP I know just how much data has been recorded over a seven year period from the same ewes including initially classed culls that were retained for study.

The assumed outcomes as follows ...

- Provide long-term data that will enable enhancement and validation of Merino breeding and selection approaches in delivering lifetime productivity across all genotypes and environments.
- Increase our understanding of the genetics of the Merino sheep to produce wool, lambs and meat over its lifetime.
- Raise the profile, and increase the collection of lifetime productivity data in the industry.
- To explore the economic & cost benefit relationship between objective measurement, performance recording and traditional classing, as well as the combination of all three.
- To provide an independent and robust comparison of the lifetime productivity of Merinos of diverse types, managed in a range of environments.

Since the end of May - early June, I've been on the road more than I can remember and that's before thinking that I may be getting a wee bit older! The old Territory has clocked up 350,000 km's and I'm still not ready to let her go as finding a substitute that is as good and as practical is a hard find I feel.

'Our' Merinos continue to evolve into the real deal as far as 'all traits covered' are concerned. A safe balance of Fleece Weight, Eye Muscle, Fat, Mules-Free able and the much forgotten Fibre Diameter across so many flocks now gives me a lot of satisfaction and sense of achievement.

ASBV's and the climb with their accuracies is a vital tool in forecasting just what's going to happen with the ever important progeny in lifting any trait you so desire.

The icing on the cake, the lucrative 5.5. year old ewe market, those guaranteed breeders that can do justice to themselves by serving another two to three years as a group are under attack.

Recently I asked a W.A. client for information on his five year old girls the previous year and was happy to tell me that he received good spondoolee for them at \$220. I applauded until he mentioned to me that that was across the hooks at WAMCO!! Somehow we all need to combine to make sure that we are not losing these valuable, maybe industry saving units to the pharkin' meat trade! Same goes with non muelsers, we need all the lambs we can get.

I have a good feeling about this year's Classic'22 lineup at our Twenty First sale. Of the many potential Classic rams I've seen already, I think that this may be our best offering - and better still possibly a full catalogue compliment of ASBV's. On ya' Dave!

That girl Rose is now heavily involved in her passion in business encompassing Ceramics. She is seemingly supplying half the Adelaide Hills, Adelaide and Kangaroo Island with all of their crockery needs and sale items due to a ripple effect due in part to Cafe owners dining at other cafes and enquiring on who just who made that sensational piece and 'crikeys, that glaze!'

Laboratory Manager, Bec Hughes has been a saviour to the Labs existence which has seen a J-Curve with sample submissions due to the amount of ewe hoggets tested from studs and the associated ASBV accuracy build-up.

A special mention to Glendon Hancock, Elders St.Arnaud Vic. due to his above and beyond commitment over the last two years in ensuring that the Victorian stud entrants invited to Classic'20 & '21 actually arrived when neither the vendors or Glendon himself had no chance at all of being part of the day.

Our boys, Jesse and Sam are doing well and that grand daughter - don't start me!

And music Glendon? Keep an ear out for my new band 'The Bobby Hawkers' at a venue near you!

You must have a listen to Carla Geneve too - Aussie music's big future right there!

Adios!

"G'day Bill, We had some really good prices today. Thankyou for all of your help with classing and ram selection - it's all coming together really well now and with our genetics with a great future ahead ..."

- Peter Andre - Kangaroo Inn S.A. after, amongst other high prices, received 2,729c greasy for a 10 bale, 16.1u, 78.6 Yield, 84mm, Unmulesed @ 50Nkt!! Come to Papa!



Classic Sponsor

Breed ELITE



KARAWATHA PARK

POLL MERINO STUD
KIMBA, SOUTH AUSTRALIA




20TH ON PROPERTY

RAM SALE

140 RAMS

BRUCELLOSIS FREE : OJD VACCINATED
FRIDAY 19TH AUGUST 2022
INSPECTION 10.30 AM : AUCTION 1 PM

BERT 0427274047 : DION 0427323583

 WWW.KARAWATHAPARK.COM.AU

Nutrien
Ag Solutions™




AuctionsPlus

BALANCED POLL MERINOS



RIDGWAY ADVANCE Poll Merino Stud

**David, Karen & Devon Ridgway
BORDERTOWN**

Annual Ram Sale

WEDNESDAY 10th AUGUST 2022



4363 Emu Flat rd., Senior, Bordertown Inspection 9.30 / Auction 1 pm (SA time)

0409 408 263 | ridgwayadvance@activ8.net.au | 0437 728 276

www.ridgwayadvancemerinos.com.au

Enquiries & Inspections Welcome



IMPACTING

PREDICTABLE

GENETICS