

CLASSINGS CLASSIC '16

Incorporating
WORLD MERINO INSIGHT
MONDAY SEPTEMBER 5th 2016 AT 1.30pm
Murray Bridge Race Course S.A.

Classings Cullings '16

Bill & Rose Walker - 25 Sturt Street, Murray Bridge SA 5253 Mobile 0428 973 804 Email: classing@internode.on.net



This may be the best photo ever taken of the river and train bridge combined at Murray Bridge SA. Photos of young rams taken adjacent to this and subsequently used to advertise Classic'15 received so much commentry and praise last year, the same opportunity is on offer in 2016.

Classings P/L, at that great Murray Bridge Racecourse, will host the fifteenth Classings Classic Ram Sale in 2016 in association with the first day of five of the potentially huge crowd drawing, World Merino Insight.

Already there has been great interest from Service Industry Providers and Studs nationally in supporting a day that hopefully attracts similar numbers as the ever popular LambEx. To sign the dotted line is the next step thanks chaps!

In my travels over the last month I have selected poll rams from three states' progressive merino studs to create a Classic'16 team that is like no other in the history of Classic sales at this atmospheric venue.

It is expected that there will be a world wide and national audience due to Insight so quality and control of, is naturally paramount to the day's success.

This year's Culling's main article featuring all things A.I. was interesting to research to say the

least as there was so much input from outside individuals with their take on the reasons for successful or more so unsuccessful programs in the last five years or so. SASMBA need to be congratulated for undertaking the interest as to offer insight via the research on offer.

All of South Australia has now had rain albeit very late for the South East again and parts of our Mallee.

That great commodity, the mighty merino, has again made the 'exotic' breed's owners have a rethink on just where their future may lay with the carcass and fibre virtues of this everlasting, evolving and progressive breed, kicking huge goals of late.

Ovine Brucellosis, infiltrating our merino flocks rapidly in the bush thanks in particular to one pathetic breed, needs immediate addressing with extinction a worthy outcome!

Due to the spinoffs associated with 'our' progressive merino, shearing twice a year

is now a reality for many with: replacing a crutching, better animal health, much increased Nkt, higher lambing percentages and reducing the cotted wool effect of lice cited as a few good reasons to give it a go. A warning though - traditional breeding won't allow enough fibre growth for this to take effect.

Fresh news at hand suggests that the partnership between AWI and Cobbett Technologies in the hopeful release of Skintraction is now a dry blower! See AWI's press for reasons why the hopeful 'silver bullet' for traditional skin breeders has fallen by the wayside!

See you at Classic'16 - September 5th.



PIMBENA

POLL MERINO STUD

POLL FLOCK NO: 601048

ON-PROPERTY SALE

WEDNESDAY 27TH JULY 2016, 1.30PM
90 RAMS



*Joined Sheep Genetics in 2003
OJD Injected from 2006
Non Mulesing from 2007
All Sires DNA Tested*

LESLIE HAMENCE

Phone / Fax : 08 8626 8002

Mobile : 0428 268 002

Email: pimbena@bigpond.com

WWW.PIMBENAPOLLMERINOS.COM.AU

A.I. FRUSTRATION: IT'S ALL IN THE HEAT!



Artificial Insemination! That term that has advanced so many flocks and studs into new territory in record time OR Artificial Insemination! That money draining risk full of disappointments essentially due to low percentages!

So many of our clients ranging from commercial enterprises inseminating upward of 500 ewes or smaller stud efforts doing 50-100, have had their frustrations over the years with end percentage results.

With technology advancing at rapid rates in other areas in livestock, it seems that the humble AI program has been left behind in terms of consistent satisfactory results. A 30-100% success rate range is typical across the nation.

Some of the early work done with shot-in-the-dark cervical AI programs, literally over the rail, had better conception rates than some of the more mediocre laproscopic results of today!

So what's the problem? Many are quick to blame the operator but could it be problems closer to home? Have we been AI-ing for so long now that we have become complacent with the obvious safety measures abided by years ago ie. heat, synchronisation, sanitation, dogs, big night out with the operator!

There was a call that the PMSG used after sponge or CIDR extraction was not the same as the old or no.. hang on was it the progesterone was different with the sponges no no it was actually the testosterone quantity given to the teaser wethers!

Hopefully the following article will help conquer the woes we are facing and get our percentages back to where they are at least consistent as to make the whole shibang worth the tedious effort!

I thank Ian Rowett for his contribution with this piece making it much easier for me to find the time to acquire other info to add to a developing story.

"Bill, This is my contribution which is the result of personal experience. Regards, Ian"

Laparoscopic Artificial Insemination 2016

"The South Australian Stud Merino Breeders Association commissioned a survey of breeders into reported disappointing results in laparoscopic insemination programs in 2011 and 2012.

Responses were received from about 50 flocks, mostly South Australian merino studs.

Our flock had performed poorly with conception rates for a number of years. My personal experience left me with a feeling of burning \$50 notes in front of an open fire and no answers as to how to control it. In short I needed superior genetics from proven sires to improve my flock but it was an extremely expensive process.

Conception rates were consistently below 50% and some as low as 20%. Our sheep were always in good condition and the time of year had little bearing on results. We always use testosterone treated teaser wethers at about 10%.



I was aware that a number of ewes were not marked by insemination time but in consultation with the AI operator they assured me the ewes looked ok inside and could see no reason they would not conceive.

Poor results continued until out of frustration I decided to leave the teasers with the unmarked ewes for another week. To my amazement nearly all the ewes were marked in the next five days.

At last we had an answer to what was happening. There is no chance of a ewe getting in lamb if she is not cycling.

Dr Simon Walker analysed the survey results and identified that in most cases teasers were going into ewes 24 hours after sponge removal. Since following his recommended protocol and putting teasers in soon after pessary removal our conception rate has improved spectacularly.

Further to this we put mature rams in our shearing shed next to but not with the ewes immediately after pessary removal and PMSG injection. They stay there for about four hours if conditions are mild. On hot days they would go in a shaded yard outside next to the ewes. The objective is to capture the 'ram effect' to stimulate the ewes to come into oestrus. Remember these ewes would have been cycling over a seventeen day period prior to our intervention.

After the ram effect I release teaser wethers at about 2% which have previously been injected with testosterone. I am a very strong advocate of using teasers with a liberal amount of branding fluid (mixed with a 1% dash of diesel) on their brisket. Plastic gloves and trousers recommended for this!

2016 RAM SALES THAT COUNT!

July 4th EYRE PENINSULA FIELD DAY

July 15th-17th BENDIGO SHEEP SHOW

July 18th BENDIGO RAM SALE

July 27th S.E. MERINO FIELD DAY

July 29th MALLEE MERINO FIELD DAY
MURRAY BRIDGE SHOW GROUND

July 26th ROEMAHKITA Cummins SA
Joe & Tracey Dahlitz 0428 295 706

July 27th PIMBENA Wirrulla SA
Les Hamence 0428 268 002

Aug 1st & 2nd HAMILTON SHEEPVENTION

Aug 3rd O'BRIEN POLL Wudinna SA
Showground - Darren O'Brien 0419 772 173

Aug 4th LUCERNBRAE Callington SA
Keith & Judy Paech 0415 701 493

Aug 4th RICE'S CREEK Tintinara SA
Mark Vandeleur 0417 871 054

Aug 5th KAMORA PARK Karoonda SA
Colin & Julie Boughen 08 8578 3456

Aug 8th RIDGWAY Lameroo SA
Ric & Gail 0433 518 568 or 08 8578 8039

Aug 9th RAMSGATE Tintinara SA
Jed Keller 0427 691 858
Craig 0418 259 049

Aug 10th RIDGWAY ADVANCE Bordertown SA
David & Karen Ridgway
0409 408 263 or 08 8754 2028

Aug 12th GLENLEA PARK Pinnaroo SA
Peter & Marianne Wallis 0428 766 126

Aug 25th CALCOOKARA Cowell SA
Brenton Smith
08 8628 5039 or 0427 285 039

Aug 26th KARAWATHA PARK Buckleboo SA
Bert Woolford 0427 274 030

Aug 29th LORELMO KEYNETON Keyneton SA
Joe Keynes 0428 648 235
Georgie 0409 287 261
Graham 0427 639 082

Aug 30th PEPPERWELL Keyneton SA
Hans Graetz 0427 790 676

Aug 30th NANTOURA Wharminda SA
Chris Prime 0427 289 021

Aug 30th RICE'S CREEK Saddleworth SA

August 31st BORUNG Waikerie SA
Brenton Kroehn 0427 414 494



Now that's a backend!! It's one of my biggest bug bears of the industry at the minute concerning the back end structure of our poll merino.

It's extremely important at time of ram selection and ewe classing that this is closely studied as it can infiltrate a flock without too much notice until crisis hits.

Shitty animals with bad hocks tend to exacerbate the problem with the crap sticking to the legs of the animal without a clear path to drop.

The very worst of the hocky animals also tend to have bad feet/pastern structure thus the meat works tending to be the only destination for such rogues!

As noticed at a recent trial the progeny from only one ram were all hocky without exception not helped by the entire ewe base suffering from the same issue.



CLASSINGS CLASSIC '16

Incorporating
WORLD MERINO INSIGHT
MONDAY SEPTEMBER 5th 2016 AT 1.30pm
Murray Bridge Race Course S.A.

www.classings.com.au
Find Us On Facebook

About 20 mm wool growth is ideal to retain brand mix but it will need replenishing several times to ensure good marks. Introducing all teasers at this time is unnecessary as they will wear themselves out riding only a handful of ewes.

The remainder of marked teasers can be released to ewes next morning (the day before insemination). Never release teasers in a confined area or their initial enthusiasm will almost certainly result in false marks. The change in timing of teaser release has resulted in us going from maybe one or two ewes marked by midday when teasers introduced day after pessary removal to about 10% marked by 7am next morning when teasers introduced soon after pessary removal the day before.

Protocol for the synchronisation of ewes using CIDRs				
This table outlines the timings for a protocol that aims to commence insemination 45h after CIDR removal. Starting time for insemination is partly determined by number of sheep to be inseminated, availability of vet etc – this time can vary provided time of pessary removal is adjusted. This information is provided as a guide and is not, in itself, a recommendation.				
Day	Time (h)	Time relative to pessary removal	Activity	Comments
-14			Insert CIDRs	
-13				
-12				
-11				
-10				
-9				
-8				
-7				
-6				
-5				
-4				
-3				
-2				
-1				
0	1pm	0h	CIDRs out by this time; 2ml PMSG; teasers	Teasers (10%) to be harnessed/painted
+1	1pm	24h	Observe teaser activity from fence line; ewes off food/water overnight	Observe again at dusk (30 - 32h after CIDRs out) Shed sheep only if weather inclement
+2	9am	44h	Draft off marked ewes ready for AI	≥60% ewes should be marked; don't inseminate unmarked ewes; minimise stress (no dogs)
	10am	45h	Commence AI	Do maidens first if in a separate flock but don't draft off if in main flock
Post-AI period – Put back-up rams in 12 days after AI. Maintain ewe condition during the first week after AI (to maximise embryo survival) followed by conventional management as pregnancy progresses.				

Alternative successful practice is the use of vasectomised rams instead of teaser wethers and the use of harnesses and crayons. There are alternatives to using branding fluid as brisket marker which does result in a small amount of wool going into 'brands' at shearing time.

It seems logical to do about three drafts of cycling ewes. Two benefits that I identify is that earlier marked ewes are inseminated first and later marked ewes inseminated later.

The other benefit is that teasers are not repeatedly riding ewes that are already marked. It is also a good time to remark briskets on teasers.

Research is not convincing that drafting early and late cyclers is an advantage.

Use of dogs and stress should be kept to a minimum so for some the practice of drafting may be more negative than of benefit. It is a personal choice.

We are using 2.3 ml PMSG on large ewes for November mating. If you have a protocol that works don't change it without consulting your AI operator.

Many breeders tell me they get good conception results without the use of teasers.

Once again I do not recommend changing a protocol that works but it is not abnormal in a merino flock for 10% of ewes to not cycle for a synchronised AI program.

There are of course some ewes that are cycling and may not be marked by teasers. A simple test is to place gentle weight with fingers on rump of ewe. If she is in season she will very likely wiggle her tail.

We are now regularly tagging 80 to 110% lambs from our AI. Previously 20 to 60%.

Inseminating non marked ewes (no longer practiced) resulted in 3 to 30% lambs.

We introduce entire rams as back up rams twelve days after insemination. These rams will have their brisket painted with a contrasting brand colour to what was used for oestrus detection before AI. eg. use green on teasers for oestrus detection and red for back up rams twelve days later.

Never release marked rams in a confined space as it will likely result in some false marks. Replenish the brisket marker as required. It is a good time to observe the activity of back up rams for a few days from 14 days after AI.

It nearly always leads to disappointment to see so much activity. Make sure plenty of rams are used as there is likely a cluster of ewes cycling.

Breeders often observe an unusually high number of ewes from the AI mob not lambing that year. One explanation can be insufficient rams used to cover those returning to the ram.

An application for funding has been forwarded to Australian Wool Innovation for research funds.

I would like to thank Dr Simon Walker for the many hours of voluntary work he has contributed in devising the survey and analysing the survey data.

Further to this he has spent a huge amount of time in preparing various submissions for funding research in order to update Laparoscopic Artificial Insemination protocols which have changed little in the past forty years."

Bill,

This following has been prepared by Dr Simon Walker as a checklist of 'Best Practice' and technical explanation.

Simon has been absolutely brilliant to work with and still has a great passion for the industry. He was Principal Scientist (now retired) and Affiliate, Turrefield Research Centre, South Australian Research and Development Institute. His research interests have included the development of various invitro technologies including involvement in JIVET (Juvenile Invitro Embryo Transfer) and sheep IVF (Invitro Fertilisation) in general.

He also played a major part in the cloning of "Matilda" the sheep. Other interests and achievements include genetic engineering and the development of protocols for both Artificial Insemination and embryo collection and transfer.

I hope you and your readers find this as interesting as I do.

Regards, Ian

Preference for sound ewes that are proven breeders.

"The repeatability of reproductive performance in naturally mated flocks is high and a similar situation is likely to occur in flocks that are artificially inseminated.

Ewes that fail to conceive in any one year are at greater risk of failing in subsequent years and, given the cost of AI, their removal could result in worthwhile financial savings.

These ewes may still conceive in a paddock mating situation where multiple opportunities to conceive are provided.

Reject ewes that are overfat or too lean compared with average.

Overweight or lean ewes are likely to be poor breeders for a variety of reasons. This problem is greater in AI flocks because the hormonal protocol for synchrony of oestrus is largely based on findings in "average" ewes – i.e. body condition scores of 3 – 3.5.

It is not uncommon to find a poor synchrony in ewes that are either too fat or too lean. Poor synchrony results in poor conception rates and these ewes should not be included in the program.

Supplement lupins leading up to AI.

The main effect of feeding lupins (and other high

protein supplements) is an increase in ovulation rate which can improve the overall reproductive performance of the flock. However, feeding within six days of ovulation (i.e. from about four days before pessary removal) can have negative effects on egg quality (due to the large amount of ammonia produced from the protein) and so care needs to be taken on managing this aspect of lupin supplementation.

There is no evidence that lupin supplementation contributes to an improved synchrony of oestrus in AI programs.

Melatonin (Regulin) – what is its role?

Melatonin production from the brain is the means whereby the animal's reproductive system is able to respond to changes in day length (short days give high concentrations; long days give low concentrations).

Melatonin can be administered as subcutaneous pellets and treatment induces a short day length state essential for seasonal breeds (e.g. Border Leicester) to cycle earlier than normal. In breeds/strains of sheep that cycle all-year-round or can be induced to cycle all-year-round using the "ram effect" (e.g. South Australian Merino), treatment with melatonin is unlikely to improve reproductive performance.

Although there is some anecdotal evidence to the contrary, melatonin treatment is generally not included in AI treatment protocols for Merino sheep.

Choice of CIDR/sponge – duration in and timing of removal.

The CIDR (controlled internal drug release) pessary contains natural progesterone whereas the sponge contain a synthetic progesterone.

There is a tendency for CIDRs to be more popular than sponges because (1) fewer are lost during the treatment period and (2) they are more hygienic than sponges. Some evidence indicates that CIDRs are more effective in synchronising oestrus although the differences are small.

The major limitation with CIDRs is that they have a fixed concentration of progesterone whereas the concentration in sponges can vary to meet specific requirements.

Both pessaries have a treatment period of 12 – 14 days. Ewes treated with CIDRs will ovulate about six hours earlier than those treated with sponges.

Generally, inseminations start about 45 hours after CIDR removal and about 50 hours after sponge removal.

However, other factors also influence this timing with semen quality being particularly relevant (e.g. later timing with poor quality semen).

Dose rate and timing for wethers if using testosterone.

MORE SALES THAT COUNT!

Sep 1st GUNALLO Pinnaroo SA
Ray 0427 778 485 or Brad 0400 335 660

Sep 2nd SWM Tintinara SA
Richard Harkness 0428 758 028

Sep 2nd ESPERANCE RAM SALE
including PENROSE AND WESTWOOD

Classings Classic'16 Monday September 5th Murray Bridge Racecourse SA

Sep 9th ADELAIDE RAM SALE

Sep 12th LONE GUM Crystal Brook SA
Helmsman Sale
Stuart Everett 0427 362 801

Sep 15th WALLALOO PARK Marnoo Vic
John Carter 0427 501 431
Trent 0427 776 114

Sep 16th MERNOWIE Marrabel SA
Ian Rowett 0418 486 050
David 0419 839 280

Sep 16th SOHNIC Marnoo Vic
Scott Nicholson 0438 086 403

Sep 19th FLAIRDALE Cooke Plains SA
Wayne Lehmann 0408 896 877

Sep 22nd MARNOO FIELD DAY VIC.

Oct 14th ELLA MATTIA Parndana SA
Andrew Heinrich 0427 596 108

CLASSINGS CLASSIC '16

Incorporating
WORLD MERINO INSIGHT
MONDAY SEPTEMBER 5th 2016 AT 1.30pm
Murray Bridge Race Course S.A.

www.classings.com.au
Find Us On Facebook





Ella Matta Poll Merino has a nice ring to it and expect to hear a lot more from this stud after this year's Classic'16. These four prospective rippers were picked from the top eight with three bred by Leahcim 1259 and the other WP 955 'Bartel.'

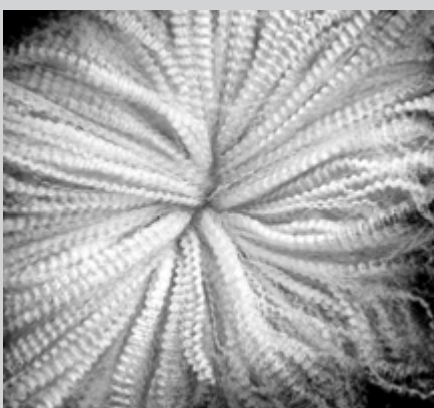
A bold crimping 150058 (pictured) possibly the lead off ram for this on-the-rise-outfit will attract many. Easily the best Classic entry from Ella Matta.



CLASSINGS CLASSIC '16

Incorporating
WORLD MERINO INSIGHT
MONDAY SEPTEMBER 5th 2016 AT 1.30pm
Murray Bridge Race Course S.A.

www.classings.com.au
Find Us On Facebook



Several proprietary testosterone products (e.g. Durateston) are available for the induction of male behaviour in wethers.

These products, administered under veterinary supervision, are long acting and a single injection will induce male-like behaviour for several weeks. It is assumed that treated wethers are as effective as entire males in inducing the "ram effect" but relevant comparisons have not been conducted.

PMSG dose rate – time of year and body weight.

PMSG (pregnant mare serum gonadotrophin; Pregnenol or Folligon) is usually administered at pessary removal and the most common volume is 2ml (400 IU).

PMSG is an important component of the treatment protocol as it helps stimulate follicle development. There is little evidence that this volume should vary with either body weight or time of year. However, there is some anecdotal evidence that in "poor" AI flocks/years, larger volumes (e.g. 2.5ml) may be desirable.

Use of sedative – can it be detrimental?

The muscle relaxant ability of sedatives has the potential to influence sperm migration and, consequently, the likelihood of fertilisation occurring. However, with laparoscopic insemination where sperm are placed very near the oviducts, there is less reliance on muscle activity to distribute sperm within the reproductive tract.

There is no firm evidence that sedatives adversely affect outcome with laparoscopic AI – some anecdotal evidence indicates that such an effect can occur but there are many case where very good results have been obtained when a sedative has been used.

Through some new contacts made with the classing of the MLP project and Sire Evaluation at Tullona-Harrow Vic., I was lucky enough to be put in contact with Dr. Gordon Refshauge who couldn't have appeared at a better time in relation to this article.

Gordon is the Livestock Research Officer with the Department of Primary Industries-Centre for Red Meat and Sheep Development at the Cowra Ag. Research & Advisory Station NSW.

His research into the effects of heat vs fertility in merinos is invaluable information to so many of us involved with the reproduction side of the industry.

Please peruse the following Q&A type correspondence I had with him with the intention of possibly giving the reader a few clues on what may have gone pear shaped with the last poor percentage and thoughts on how to improve preparation next effort....

"In terms of heat stress and the effects on reproduction, I think I'll start with a few known facts and some of my own results.

I was heavily involved in the management of the Cowra NSW site in the INF (Information Nucleus Flock) program.



Across the whole program, there were two unexplained AI failures in the Sheep CRCs Information Nucleus Flock that piqued my interest in heat stress.

How bad percentage wise?

20% crossbred, 40% Merino. (The 5 year program averaged 72%.) One was following high ambient temperatures, the other after high heat and humidity. At the latter location, they had in fact had an AI event two years previous that was hotter in ambient temperatures-what were the differences I asked myself?

Looking at the data, both failures coincided with anomalous hot weather for the location. The first location had some of its record high temperatures.

Describe those temperatures....

42°C on the day of AI! They had a 44°C day 10 days previous to AI and it is possible this may have lengthened oestrous.

At the second site, in the year they went well, they had 9 days consecutively average 39.97c around the time of AI but with low humidity (12%). All up, they had 48 days of continual heat and that was high enough to lower fertility at AI. However, in this instance it might be possible that the 40 days of high heat before the first day of AI was enough for the ewes to acclimatise to the conditions.

(Acclimation and acclimatisation are not well examined areas of research in ewe reproduction). I should also add that none of that heat was hotter than 2 standard deviations above the long term average.

In the year at the second location they had a failure, they had a day reaching 2 standard deviations above average but it coincided with hot night-time temperatures following the day the XB ewes were AI'd., which was also 2 standard deviations above average.

This heat stress information is important because for many locations in the NSW sheep zones, for



example, I can show that the number of extreme heat events has doubled in the last 10 years.

For Cowra there were 49 extremely hot days in the years 1960 to 1995. In the years 1996 to 2014 that number increased to 63.

That is 50% more days in 33% of the time. If the climate is changing, as that data suggests, then heat stress effects will be more important than they have been since the development of AI.

Looking at the 22,056 insemination records from 8 research stations over 5 years of operations, plus collecting local daily weather records from the BOM, I have uncovered a number of interesting relationships between heat and fertility (and litter size at scanning).

Our unpublished findings show that the oldest and youngest ewes, heaviest and lightest ewes and the leanest ewes are the most susceptible groups in the flock to heat stress. These are age, weight and body condition relationships. For these susceptible sheep, fertility declines at lower levels of heat.

Shouldn't that be 'higher levels of heat or fertility improves'?

Sorry - I wasn't that clear. All ewes show declining fertility as the heat stress index value (temperature humidity index, THI) increases. A THI value of 83 will show reductions in all animals while these more susceptible animals show declines at 77 eg. The difference between those two values at 30% humidity is 32 degrees versus 37 degrees.

At high levels of heat all ewes show fertility reductions. We also show that the *over night conditions are important and failing to reach thermoneutral over consecutive nights has severe effects.* My research hasn't been published, while I am in the drafting stage currently, getting close to submission.

1. What weightings do you put on separate stages during the AI calendar with your concerns for heat/humidity stress?

Heat stress can affect ova quality, increase oestrous length, kill early embryos and affect placental vascular development. In terms of AI, if we have had mild conditions previously, *I would expect extreme heat to affect AI worst between the days just before through to 5 days post AI, especially with high night temperatures.*

In my data, I haven't looked at longer periods. Some recent data I have seen suggests that record heat conditions have the potential to affect fertility perhaps up to day 12, around the time of implantation.

Remember that at days 10-12 the embryo is implanting. Heat stress can kill embryos through heat shock, or through metabolic byproducts, such as oxygen radicals.

The great variable here is how long the animals are challenged to conditions not reaching thermoneutral (TN). *Failing to reach TN is probably the worst outcome, no matter how hot it gets, and my data shows alarming fertility declines as more consecutive nights fail to reach TN.*

2. The day of sponge/CIDR insertion?

Not likely, but this hasn't been explicitly tested in research and is a good question, given follicle maturation time.

3. The 14-16 day period leading to sponge extraction?

The literature suggests that fertility is affected when heat is applied 5 days pre-breeding (day 12 of the oestrous cycle). I have used my data to look at 8 and 5 days before AI and we find effects of heat lowering fertility.

4. That short period just prior to AI procedure?

Yes, up to 5 days post-conception is well documented to be a very high risk period. Depending on the degree of heat applied, up to 100% of embryos can be lost.

Remember, the old methods to examine heat stress used to apply sheep to THI of 90 (really darn hot) and hold them at 90 for days and weeks-none of which truly reflect what conditions we expect to occur naturally.

Those studies have helped our understanding greatly but these days many studies try to match natural conditions (eg. very hot days, cooler nights)

5. The period as mentioned with the XB AI episode directly after procedure?

In our studies, crossbred ewes were mostly BLM and were more susceptible than Merinos, their fertility curves started to decline about 3 THI units earlier, which is about 3°C earlier at the same RH%

Aside from this.....quality of drugs used with CIDR/Sponge and PMSG - is there an issue here as per rumour?

Not my place to comment.

In the process of analysing the INF AI data, we are finding very heavy ewes have lower fertility across a wide range of THI, which might have something to do with dose rates.

Considering AI is not new now, are growers becoming a bit complacent with normal procedures leading up to AI ie. dogs, shed biosecurity etc.?

I think complacency is a problem in all aspects of reproduction. Brucellosis is on the rise in my region (see Cullings '15 feature article) and producers aren't finding out until pregnancy scanning. Some flocks are getting 70-80% dry. Many flocks are getting 30% dry at scanning. *Veterinary surveys of central west NSW reveal 1 in 4 flocks have brucellosis! I am not much of a chef, but that's in the recipe for disaster.*

If we remember that perhaps only 30% of ewes are pregnancy scanned, then lots of producers are finding out they have a problem at lamb marking!

Referring to the reproduction literature, heat stress can:

1. Impair spermatogenesis
2. Increase oestrous length



Yep that's another pharkin' Dorper, this time the ultimate, a ram, intruding on the great Netallie Station-Wilcannia NSW merino flock.

Nine ewe hoggets escaped the classing yards at the 2015 classing and when re-mustered the population had doubled led by this bastard!

And that ain't all....Netallie had to dispose of 50 merino rams due to Brucellosis, only coming from the one obvious source. That's \$50,000 worth of purchased genetics to slaughter due to this pathetic predicament!

My study on the subject in the 2015 Cullings is now exemplified due to these roving muvvas!

As soon as the Dorper becomes less popular like the SAMM, or better still extinct, the less concerns there will be on the biosecurity front.

Merinos are certainly on the front foot at the minute and certainly worth considering as a more viable long term option in the bush before this whole shibang brings on neighbourly suings and loss of friendships!



More on this 2015 \$5,000 Esperance Ram Sale topper later but whilst on my backend rant, this guy from Westwood Poll had the goods for structure exhibiting the perfect setup for hock improvement.

Not that Ramsgate have an issue with it but no harm in biting the bullet as a preventative.

BreedELITE SHEEP

The Ultimate Sheep Pedigree and Performance Recording Software



Mac and Windows
computers, iPad, iPhone
and iPod compatible.

Visit **breedelite.com**
for more details and
to sign up for your
free 3-month trial.

**3-month
free trial
using your data**

Capable of submitting fully formed
ewe reproduction records to the Sheep
Genetics database

Smaller Breeder
\$167/year

Larger Breeder
\$367/year

	Limited to 500	Unlimited
Total records	Limited to 500	Unlimited
Initial investment	\$367	\$567
FREE data migration, setup and first years subscription	✓	✓
Access to all upgrades	✓	✓
Full software support	✓	✓
Full recording and reporting	✓	✓
Sheep Genetics uploads and downloads	✓	✓
Electronic ID compatibility	✓	✓
Barcode printing capable	✓	✓
Assistance with data handling	Fee for service	✓

Email us at admin@breedelite.com or phone 08 8553 2485

Australian Wool Producer of the Year 2013, John & Jo Symons, Kangaroo Island, South Australia, were the first producers to use BreedELITE SHEEP Pedigree and Performance Recording Software for their ram breeding nucleus.

They now have over 8000 sheep recorded and also use it to record, rank and select their commercial ewe hoggets.

In 1999, my wife Jo and I made a decision to breed our own rams for our wool growing enterprise at 'Turkey Lane' on Kangaroo Island. For years we had been concerned about the lack of genetic progress we were making trying to convert our 23 micron wool to a finer micron without losing wool cut.

After enlisting Greg as a consultant we selected the best of our ewes in 1999 and artificially inseminated them to get our first drop of rams in 2000. Greg realised that none of the software available was sophisticated enough to cater for the record keeping (which included detailed mating and lambing records), interfacing with electronic devices and transferring this information to a provider such as Merino Select to analyse genetic trends.

I must confess I had no concept of the importance of this software, but fortunately Greg did and tasked himself to develop it. Because Greg is involved as a consultant, he



BreedELITE SHEEP has helped the Symons family make radical changes to the productivity and profitability of their commercial wool enterprise.

works in the sheep yards entering data and is a wizz with computers, all the ingredients were there to come up with something special.

We have witnessed the evolution of BreedElite SHEEP since 1999, and each upgrade has made it more and more user friendly, and effective for running a very successful breeding program. We were fortunate to win Australian Wool Grower of the Year in 2013 and what impressed the judges most was our ability to transform a 23 plus micron flock to a sub 19 micron flock and increase wool cut at the same time. BreedELITE SHEEP played a major role in this transformation, and I would recommend this software to anyone who is breeding rams.



**3-month
free trial
using your data**

**BreedELITE
SHEEP**

***The Ultimate Sheep Pedigree and
Performance Recording Software***

Smaller Breeder
up to 500 records

\$167/year

Larger Breeder
Unlimited records

\$367/year

Regularly upgraded and support is always available.

Email Greg at admin@breedelite.com
or phone 08 8553 2485.

For more details visit www.breedelite.com

- ✓ Intuitively designed and developed by a specialist sheep veterinarian who is also a Sheep Genetics service provider
- ✓ The sophisticated mating and lambing module for more accurate Sheep Genetics Australian Sheep Breeding Values
- ✓ Electronic ID compliance makes data recording and animal retrieval easy
- ✓ Designed to be used whenever data is being recorded, mirroring what is happening in the paddock
- ✓ All sheep breeds supported
- ✓ Pedigree, reproduction, measured and visual data recording all available
- ✓ Simple importing and exporting of fully compliant Sheep Genetics compatible data files
- ✓ Built to reflect the management sequence that occurs in the sheep breeding cycle
- ✓ Mac and Windows computers, iPad and iPhone compatible

3. Kill early embryos (mortality of up to 100% for embryos 0-5 days old, declining thereafter (limited data here)
4. Permanently impair placental blood flow

I have used the Temperature Humidity Index (THI) for the analyses, taking daily maximum and minimum temperatures and the relative humidity (RH%) at those temperatures to calculate the daily extremes.

We cannot account for local effects, such as solar radiation, wind speed or shade. These were not recorded for the base ewe flock in the INF.

But what's your take on it?

Given we don't have all the possible information, it suggests to me that despite all the sources of potential error (variation) we are still finding significant relationships with the THI. *For AI'd ewes that have no shade, I would expect their fertility will decline at lower THI values than in our data.*

If we have a bit of wind, the THI would need to be higher. Remember, of course the need to meet thermoneutral. For each night not reaching TN, my data shows about a 5% decline in fertility.

I had an interesting 'find' at a station in NSW in the sheepclassing race probably ten years ago over four days of pathetically hot day/night temperatures. (40+ days in succession) Hot yard rails, gates and in particular some over nourished, black tipped greasy wools on the sheep's back which were 'untouchable!' Truckloads of these ewes had just returned back home after adjustment in better parts of the state.

Lambs were weaned just prior. Of the ewes which were too hot to touch with wool opening impossible, exhibiting over nourished fibre (usually from an ill bred skin type) most were barren!

Free(er) types without the excess nourishment held a huge sway toward having lambs with the udder the obvious evidence. I became so cocky that I could point to a ewe from a few metres and tell the manager of her wet/dry status 80% of the time just by looking at tip structure.

I was so engrossed with that event that on returning home I went direct to a Dick Smith type store and bought a non contact thermometer to test my theories with temp. parameters and cutoffs.....I'm still classing sheep and driving a Ford not an X5 Beamer!

Back to Gordon....

"A quick note on wool relationships:

If we have two flocks of different wool length (say 1 month off shears and 11 months off shears) and have high heat for several days we find that the full wool ewes will have higher body temperatures.

If we then shear those ewes, their temperature will drop lower than the shorn ewes. This is because the hormonal thermogenic system is operating to keep the sheep's metabolic heat production suppressed.

If we have a cold snap following our heat wave, we risk losing lots of off-shears ewes because their bodies start colder...

The great challenge facing the industry will be our competing desires to increase body temperature of newborn lambs, while lowering body temperature of young and adult sheep.

There is natural variation in body temperature between animals of the same breeding, flock and location. Generally, hotter sheep are less fertile.

You will also note that ewes have higher temperature at ovulation, and at AI the sedative xylazil will (without consequence) increase body temperature temporarily. So some caution is required when



looking at body temperature relationships at ovulation and AI."

Thanks Bill, for the chance to communicate broadly with the industry.

If I may make one final comment, it is that the most recent (unpublished I must emphasise) analysis of the heat stress data is suggesting litter size in pregnant ewes increases with higher THI conditions. This suggests that when we have a lower fertility after AI thanks to hot weather, we still get high %s of twins. Fascinating. Is that thanks to highly fecund ewes? I don't know-more to learn!"

Dr Gordon Refshauge
gordon.refshauge@dpi.nsw.gov.au

Now for some response from clients on issues associated with mediocre or best results. This one from the Mallee...

"Our worst AI was about 55% conception. One reason was the operator used a new PMSG drug which wasn't the same strength as what they had been using.

One year our teasers got to within one fence of our AI ewes prior to mating which may have affected our results.

Best ever was 85% over 900 ewes AI'd. Fresh semen definitely gives a better result than frozen.

We aim to use fresh from our own rams if we can negotiate with the buyers to get them back on the day.

We find over-fat ewes tend to give a poor result."

A Central Eyre Peninsula comment...

"Our problem with AI and poor results, a couple of things.

Harvest getting earlier putting pressure on the system and grass free medic pasture running out of puff right when you want to hold condition.

Over fat ewes losing weight before you can get them onto stubbles so I put ewes in feedlot and seemed to work a bit better."

And this from another on Upper Eyre Peninsula...

"Worst ever result would be low 40% due to extreme hot weather with corresponding dust storm at the end of our third drought in a row in 2008. Best ever was a high of 80%.

The wind and heat was so bad we were struggling to see each other in the shed! From our shearing shed we could not even see the old house.

We learnt from this experience - now we always check the 7 day forecast before we pull the implants so that we can manipulate time of insemination by either delaying or pulling early. If it is going to be a stinker we pull very early (5am) and finish AI by say 10am before the heat of the day.

We used to use a sedative to settle the ewes but have replaced that with a Transcalm product that has electrolytes for hydration as well as a calming effect for the ewe. We think this helped achieve our best result.

All the planets have to align to get a good result and attention to detail is paramount in preparation of not only the ewe but ram prep as well.

This is not just the weeks leading up to the program but for at least 6 months out. If something has a setback it is a waste of time and more importantly, money, to do the job.

Our preference would be not to use frozen semen and that fresh always gives a better result, but this could be to do with the collection and freezing process - sometimes semen is frozen that is far too low for quality."

There is a Semen Incubation Test available through the University of Sydney where the semen is thawed and kept at 37 degrees and monitored at 2, 4 & 6 hours. If the semen is no good and showing no motility after 6 hours then the semen obviously shouldn't be used.

This test costs \$100 and we will be using this if we ever use frozen semen again.

If synchronage is not perfect and ewes don't ovulate within say 6 hrs and we used semen that ran out of steam at 4 hrs then there's obviously no conception.

I believe this is the single biggest downfall of frozen semen and yet it is the best way to access top genetics but if you only get a 50% result then \$40 a dose becomes \$80."

The Sydney University semen test as mentioned previously is in part shown above with two separate samples represented below.

These are two separate samples tested for motility. Notice sample one as still exhibiting 55% motility even after six hours suspended at 37 degrees in a controlled bath. Sample two sees no live semen at a mere four hours. Often this semen would be utilised without any knowledge of it's uselessness!



Remember both samples after 20 minutes exhibited good motility at 65%.

The following is extra commentary added to the topic by Simon Walker...

Any breeder involved in an AI program with frozen-thawed semen can request a motility/concentration test – this can be done through The University of Sydney.

Practitioners who fail to organise such tests, if requested, are failing their clients.

The information provided won't solve all problems but it does alert the operator to a potential problem and this information should be provided to the breeder.

There is no clear "cut off" point in relation to motility but a sample in which motility is reduced to zero after a 6h incubation period (which seems to be the standard test period) sets alarm bells ringing.

A flock of synchronised ewes take about 20 - 24 hours from first to last ovulation with most ovulations occurring over a 6 to 12 hour period (with large between year and between flock variation) so a sample where motility is reduced to zero within six hours probably won't do the job.

The best strategy to handle these poor samples is to delay the time of insemination – a delay of 6 hours or even as long as 10hours (when most ewes should have ovulated) is justified. Alternatively, as you indicate, source a separate batch of the same semen in the hope that it is of better quality – although under ideal conditions there should not be much variation between batches.

Fresh/chilled semen generally does not run into this problem with longevity being greater than 24 hours. It is important that breeders/practitioners identify when the first sheep come into oestrus after CIDR/sponge pull. This should be by about 20-24 hours and this information indicates that the pattern of synchrony will be "normal" – i.e. first ovulations by about 45-46 hours and the last around 64-66 hours with a peak at around the 54–58 hour period (CIDR/2ml PMSG).

This information provides a sound basis for adjusting the time of insemination if working with poor quality semen. Some flocks don't start coming into oestrus until around 36 hours so it can never be assumed that all flocks will be "normal."

Back to a Victorian Mallee stud with a summary of his successful results...

"We have had great success with our Laparoscopic AI Programmes both in 2015 and 2016.

Normally we achieve 70-80% live lambs from our AI Programmes, with our worst result being 40% in 2013."

"For 2015 we AI'd 180 ewes to 4 different sires, 2 with frozen semen and 2 with fresh, which resulted in an April drop of 85% live lambs with 25 additional lambs born to a backup ram."

What do you think happened that year to only achieve 40% ?

A different vet was used!



What was the percentage difference between fresh and frozen?

"For 2016 we AI'd 116 ewes to 1 ram using frozen semen which resulted in 100 live lambs in April (86%), plus 40 to backup rams giving us 120% in total.

We wean by mid-July. Our Programme for 2016 lambing was as follows:

27 Sept (2015) Insert Regulin implant

(condition score 3-4)

- 15 Oct Inject teasers with Testosterone
- 22 Oct Insert sponges using Lubricant and Antibiotic Powder
- 30 Oct Inject teasers with Testosterone
- 04 Nov Remove sponges and inject 2mls Intramuscular Pregnecol Introduce teasers (wearing crayon) to ewes.
- 06 Nov AI technicians arrive. 90% of ewes have been marked by teasers. Ewes are sedated prior to procedure.

Our AI Vet uses a camera with a screen so as we can view the condition of the ovaries. We rejected 4 ewes for complications and AI'd 116. Post-insemination the ewes are left to quietly wander back to the paddock.

The ewes were fed with an oat/lupin mix in self feeders plus hay prior to and during lambing in April with very little paddock feed.

A few more questions for Simon...

If a grower has a dream run with the season and suddenly realises that a month out from sponging that the girls are just too solid with a condition score of 4, would a protein back off for a fortnight and then a boost leading into sponging (as in a rising plain) work or would it be wise to dump the whole program?

What other circumstances would arise as to suggest quitting a program and cutting one's losses other than either end of the condition score extremes?

The follicle that releases an egg at the synchronised oestrus starts its final maturation phase from about one month before-hand. Follicle maturation is completed six days before ovulation and oocyte maturation is completed during the last 24 hours before ovulation.

A rising plane of nutrition (emphasis on protein) will increase the number of follicles that mature and ovulate (hence ovulation rate increases).

There is a minimum number of days over which high protein diet needs to be fed to get an increase in ovulation rate - can't remember exactly but it may be 10 days but rule of thumb is more like two weeks or more.

There is no point extending this feeding into the last six days as the number of follicles to ovulate is determined by this stage-in fact continued feeding is likely to have a detrimental effect as high ammonia concentrations (from protein metabolism) will adversely impact egg/embryo quality (this is why a significant number of eggs produced by "flushing" don't develop).

Producers need to be on the ball at least two-three months out from an AI program so that most sheep are of the preferred condition score come AI.

One month out from sponging gives inadequate time to manipulate condition score. As a rule of thumb, to reduce score by 0.5 (say from 4.0 to 3.5), a diet of 0.7M would be required for 2 - 3 months-it would

Dear Sir/Madam,

We have examined the following semen sample subjectively for post-thaw motility, sperm concentration and percentage gross abnormalities by methods outlined in Salamon's *Artificial Insemination of Sheep & Goats* (Butterworths, Sydney, 1987). I certify that it is a true record of the analysis of the samples provided to me. I can accept no liability for the quality of semen in related samples judged by any subsequent assessment.

ID	Collection Date	Motility %			
		20 min	2h	4h	6h
Hendy BAN 140614	31/10/2015	65	60	55	55

ID	Collection Date	Motility %			
		20 min	2h	4h	6h
HG HF 23	24/11/2015	65	30	0	0

then be possible to “flush” with a 20% lupins, 80% grain including fibre.

However, I wouldn't dump the program in the situation that you outline- score 4 sheep do get pregnant but its not a great way to implement an AI program. Condition scores 3 - 3+ are preferred.

Other “quit” scenarios- other than extreme weather events (e.g. prolonged heat waves) I can't think of any.

And from the Upper South East...

“When we first started A.I. in about 2000 we could consistently get 100% lambs per ewes A.I.'d. by following basic protocol and not trying too hard-plus another 15-25% to backup lambs. We found this very acceptable and economical.

We didn't scan back then so don't know an accurate conception rate but would estimate it to be in the 70-80% range, with 25-40% rearing twins.

In recent years results hadn't been as good with maybe a 55-60% conception. The only change being a different form of PMSG drug. Apparently the drug company stopped making the original drug due to it being a small market and not being viable.

The last two years we have been able to get back up to about a 70% conception by increasing the PMSG and some minor timing changes to the program as instructed by our vet.

These results are getting close to the old days but with the increased numbers of top affordable poll sires being available, resulting in a lighter work load, natural mating is becoming more attractive.

However there will always be that super sire that can't be purchased. So we maybe able to scale back AI programs but we need to improve results as best as we can.

We had one bad result 3 years ago when one sire group only achieved a 30% conception, with all other groups between 65% and 80%. This semen was shipped in from another operator and the vet had concerns over it's quality when thawed at the time of insemination.

All the ewes were prepared the same with the only difference being the 'imported' semen. To freeze and thaw semen it needs to be top quality to start with at collection.

We personally have had just as good a result using frozen semen as fresh semen, however I know of breeders that will only use fresh and will not have a bar of frozen semen. I now wonder if this is due to some operators standards on quality of semen pre freezing being too low.

The other frustrating thing when you have a bad result is the increase of dry ewes then joined to more mediocre backups. We are a stud that prides it's self on it's fertility and it's hard to draw a line and cull top grade ewes for not rearing a lamb, when it may not have been their fault.”

Finally another from the S.A. Mallee...

“We have been increasingly disappointed with one, the conception rates, and two the twinning percentages via scanning through AI and ET. Our management of the ewes and the pastures they graze leading up to AI and ET have remained consistent with when we were achieving better results. My interpretation of disappointing is a conception rate of less than 70% and a twinning percentage of less than 50%.

I know this does not constitute a failure in a lot of peoples eyes as there are far worse results being reported but we have been steadily falling by a few percent each year even though we manage the ewes to achieve higher results.

By this I mean we have been naturally mating all our maiden ewes and recording those that conceived and reared twins. These are the only ewes that have the option of going into our AI program the following year (no single bearing ewes used). Therefore we have been selecting our most fertile ewes to achieve similar results to 10 years ago when we did not select twinning ewes and even used maiden ewes in our AI program.

Therefore the cost of AI has increased. I feel I am sacrificing a higher lambing percentage on my most fertile ewes to complete an AI program. This cost is significant.

On 100 ewes mated to AI, I now consider if I can get 80 -90 lambs weaned, is a more common (not acceptable) result. If all these twin capable ewes were mated naturally I would consider a lambing percentage of 130 around the mark.

This loss is 40-50 lambs and whilst I can pick up some of that loss with the ones that don't conceive at all with AI getting pregnant with the back up ram, no one saves their best ram to use as a back up.

On the postive side for AI, it is still the most risk averse way of using the best rams in the industry that could potentially have a big impact on your flock.

In the past 12 months I have completed AI to rams with a combined sale valued of well over \$100,000 and if I don't like the progeny from any of them I have spent a small fraction of that to find out. If I had purchased those rams, the financial implications are far more severe.” P.W.

The above response of lambing results coming from only multiple birth born mums really does indicate that the heritability of breeding for multiples is oddly quite low.....

I am hoping that of all the information on offer within this article that there may be something of note that suggests a reason to improve your own program.

The timing of teaser wether implementation, the effects of heat and those night time temperatures appear critical to success.

I thank the instigation of the SA Stud Merino Breeders via Ian Rowett to study the various results across the state as to the reasons for

successful/unsuccessful programs.

Dr. Simon Walker appears as essential in transferring his findings and experience to those who needed to know in lieu of hopeful future results.

More appreciation and thanks also to Dr. Gordon Refshauge for his research and eventual paper on heat related problems including the fascinating Thermoneutral discussion.

Thanks also to those who added their own commentary after many years of joy and frustration with their own individual efforts at AI time!

As a backup to this article I would recommend going onto the SASMBA website and checking out the Laproscopic Insemination Update in Resources as to access more information on the subject.

Keep on humping!



CLASSINGS CLASSIC '16

Incorporating
WORLD MERINO INSIGHT
MONDAY SEPTEMBER 5th 2016 AT 1.30pm
Murray Bridge Race Course S.A.

www.classings.com.au
Find Us On Facebook



**WORLD
MERINO
INSIGHT**
ADELAIDE
SOUTH AUSTRALIA
4-9 SEPTEMBER 2016



**REGISTRATIONS FOR
DELEGATES AND
EXHIBITORS
NOW OPEN!**



WORLD MERINO INSIGHT—ADELAIDE 2016

A new and exciting sheep industry event to be held 4th to 9th September 2016.

Staged at multiple venues including the Murray Bridge Racecourse in conjunction with the Classings Classic, the Hilton Adelaide, and the Adelaide Showground—the program weaves together ram sales, sheep and supplier exhibits, Royal Adelaide Show competitions, and a practically-oriented conference for everyone with a stake in the wool and sheepmeat industries.

Register at www.worldmerinoinsight.com

Facebook: World Merino Insight Adelaide 2016



**Bruce, Trudy and
Thomas Pengilly**

**(08)90786062
Cascade - WA**

Please feel free to drop in, say g'day and have a look over this years offerings at the following venues:

18th-19th of August at the Katanning Sheep Expo

26th of August for our On Farm Field Day

2nd of September is the Esperance Ram Sale

And to be confirmed

5th September for the Classings Classic Ram Sale

Murray Bridge SA.

CLASSINGS CLASSIC '15

MURRAY BRIDGE RACECOURSE

TOP \$30,000 AVERAGE \$4,568 56 OFFERED 54 SOLD



Another year to be proud of the great Classic sale with Classic '15 again raising the bar for fibre and structure quality selling to a top of \$30,000 and a historical best average of \$4,568.

Due to my concerns in the classing race that bad hocks are taking over the world there were a lot of reasons to be strict on sale possibilities leading up to September. Some of the best looking animals that were up for contention didn't make the cut.

The outcome was 56 rams of which the evenness of quality the Classic sale had ever hosted much to the admiration of onlookers.

It was the Mallee's day with the Gunallo, Glenlea Park and Ridgway polls heading the averages and grossing \$61,000 with only their three individual top animals!

Gunallo - Pinnaroo SA averaged \$10,280 for their seven polls which was easily their best looking team since the sale's inception. A ram the Schroeders named 'Sandiland' (Gun140067) due to his resemblance to a certain Fremantle player was first of their lineup and sold for \$10,000 to Brenton and Penny Kroehn's Borung Poll-Waikerie SA.

The long bodied poll was ET bred by that king SuperSire L858 with ASBV's 9.8 YWT & MP+150 at 18.1 & 2.2sd

There was great debate leading up to the sale as to which of the Gunallo lineup was the pick. At \$30,000 possibly hinting that the second in the list



was just that. 140007 or 'Bond' at YCFW 19.6 and ET bred, created an exciting bidding frenzy knocked down to a partnership between Ridgway Advance-Bordertown SA and Ramsgate-Tintinara SA.

The sale topper was bred by Gunallo's 'Pride' that sold in Adelaide a few years back at \$22,000 to Leovale and Derella Downs WA. 'Pride' in turn was bred by Kamora Park 37 that sold at Classic '10 for \$14,000.

Superior Wool Syndicate who were the losing bidder to the Bond top price, were keen to latch

onto a Gunallo on the day. They went for their number two pick, another 'Pride' son that had the goods and outlaying \$16,000 for the honour! ASBV's YCFW 19.6 & YWT 8.0 & 12.6cv aided their attraction.

Stuart Croft-Hamilton Vic. secured a Gunallo for \$7,000 bred by KP37 with a YCFW 25.5. Roemahkita bought a thumper with YCFW 23.5 to bolster his stud's (already good) fleece weight



potential. Ian Clemen-Kapunda SA and the Toogoods from the Mallee did well to pick up their two selections for \$2,500 each.

Glenlea Park - Pinnaroo SA never seem to falter at the Classic sales with 2015 sticking with that trend. Peter Wallis stripped his team down to the pick four and didn't dismay.

The team averaged over \$10,000 and looked sensational along with the Gunallo's right next door.

O'Brien Poll-Kyancutta SA were intent on owning a Ram Lamb Syndicate bred ripper and outlaid \$14,000. Rob Gibson-Hay NSW secured two well made GP455 sons and both exclusively Embryo Transfer bred.

Ol' mate Will Lynch, forever a Glenlea Park supporter, bought another ET bred son of GP455 not only for his stature but for the great pedigree of the donor ewe for \$12,000.

Ridgway - Lamerook SA deserved a great result as the team lined up as world beaters and were well rewarded with an average over \$8,000 for their eight penned.

Their top two were hard to split. Maybe this was due to their sire being L858 who continues to pump out winners for so many studs nationwide.

Ridgway's first became the second highest price for the day and sold to by now swell heads, Gunallo's Ray and Brad Schroeder after their own Classic success.

They bought the well proportioned R721 bred by L858 for \$17,000 with a YCFW 26.0 & YWT 8.8 combined with good objective figures. I only write testimonials when a ram is up to the mark and 721 was certainly all of that. He had a YCFW 26 & MP+ 155.

Next in Ridgway's lineup to complete the 858 pairing was R715 selling for \$6,500 to Angus McLachlan's Rosebank-Mt. Pleasant SA. A great safe poll with density at YWT 8.6 & YCFW 17.0 with typical Ridgway lustre.

Craig & Josh Graham-Maitland SA, lent great support with two purchases at \$4,000 & \$3,000 with the first, an L47 son at YCFW 20.0 & YWT 8.0.

Calcookara-Cowell SA bought a bold crimping R1137 son with outstanding figures for \$3,000 including YCFW 22.0 & MP+ 158. Neil Wormold-Wunkar SA snuck in a beauty at \$3,250 which may have made a lot more had it not been for the dollars paid a few pens previous.

Altus P/L did well at \$2,500 and Netallie Station secured the last in the run for \$1,000 ..somehow!

Roemahkita - Cummins SA had a solid day averaging \$4,500 for their three rock solid polls to a top of \$5,250.

Hodder Pastoral-Marnoo Vic. bought the top one with outstanding real figures of 17.1u & 2.7sd including YFD -2.1.

Tony Martin-Wynarka SA bought the second on offer for \$4,500 and Rob Gibson-Hay NSW bought at \$3,500 for one of the few JCS 102'S that made the cut!

Ridgway Advance - Bordertown SA averaged a healthy \$3,550 for the five they sold, twice hitting \$5,000.

O'Brien Poll bought Ridgway's first, a RA493 son for just that, a great fibred ram with a meaty carcass. Regular client David Farr-Wunkar SA bought a RA 060 'Nelson' progeny for the same \$5,000 figure and was my pick of the bunch. Trevor and Craig Gameau bought a RA 'Holy' bred screamer, very square with typical 'holy'



CLASSIC SALE CONTINUES.....

type fibre for \$3,000. The Graham family from Maitland kept up the quality by securing two great fibre sheep for \$2,750 & \$2,000.

Wallaloo Park - Marnoo Vic. set the world on fire in 2014 and topped the averages yet couldn't repeat that success in 2015. No disgrace though with two selling at \$3,500 to Lucernbrae-Callington SA and the other to Karawatha-Buckleboo SA for \$3,250. Both were bred by WP170.

Kamora Park-Karoonda SA let me have only two rams for the Classic with the top selling for \$5,000 and going to Westwood Poll WA.

With a YCFW 22.3 & MP+ 159 and ET bred this guy personified fleece weight and if it wasn't for a slight blemish near one eye this bloke would still be residing in the Boughen ram paddock! The second sold for \$1,500 and might have gone to Netallie.

I'm hoping to get a few more from this stud for this year's Classic as to repeat a great day the stud had a few years back with two selling for \$10,000 and causing quite a stir!

Ramsgate - Tintinara SA continue to climb the charts with a healthy average of \$2,813 for the best team in the Classic yet.

Bevan & Cindy Siviour-Cowell SA had asked me to keep an eye out for the best L858 sons going around and luckily within the sale we had some choice.

Ramsgate 140296 blew the \$3,000 budget I was given as the Siviours were overseas for the sale yet we are still on good terms as this bolter, 296 topped the Ramsgate list at \$4,500!

The second L858 son, Ramsgate140338 went to the astute Mallee collector of fine animals, Peter Gilbertson-Lameroo SA, for \$3,000 and another pen filler with great fibre .He too was a YCFW 17 including no fibres > 30u.

I bought the third in the lineup for a GP395 son at \$2,250 and handballed him on to an overjoyed Grant Wageknecht post sale. Mt. Boothby Props-Tintinara SA secured the last, a RA 'Nelson' son for a paltry \$1,500!

Sohnic - Marnoo Vic. always make us stop and look at Hamilton Sheepvention with their great

wool quality and growth so it was great to have them back at Classic'15 and although near the end of the sale due to their absence in the last few years it didn't have any effect with both selling for \$3,000 & \$2,000 respectively. Both rams were a treat and the quality continued at their best on property sale for awhile in October.

Borong-Waikerie SA happy to have bought the first and me the second for Grant Wageknecht-Murray Bridge SA. Both stretchy fellas with as good a fibre in the marquee.

Ella Matta - Parndana SA had the highest ASBV for YCFW in the whole of the catalogue at 28.9. This barrelly bloke filled the pen and was bought by good figures appreciator, Les Hamence of Pimbena Poll-Wirrulla SA. He was bred by WP080124 exhibiting the excellent figures of 18.5u 2.7sd 14.5cv & 0.5pf, selling at \$3000

The second, a WP 'Bartel' son sold to clients, Mitch & Ros Willson-Penneshaw KI for \$1,500 with MP+ 160.

Lorelmo KS - Keyneton SA. The ever supporting Wilson family from Ballarat are keen on the Lorelmo Keyneton genetics and were happy to pay \$2,400 for a 'Chevy' built son with pure silk on his back at 16.9u & 2.8sd .

\$2,000 saw the second in the lineup go to Burra SA again with great figures and selling to Alan Hall - Burra.

The **Lucernbrae - Callington SA** team sold at good flock ram prices and averaged \$1,650 to a top of \$3,000 for the pick that I bought for Critter and Bec Freeman-Penong SA for a thumping Luc/Elite son opening up great fibre lustre and frame. Sue and David Holt-Keyneton SA bought well at \$2,000 from the same sire with Netallie, Broughton Vale and Aston Stations NSW too easily picking up the next three at around \$1,000 thus the bargains of the day.

Rice's Creek - Tintinara SA sold their one entry for \$3,100 bred by WP 'Eureka.'

Borong - Waikerie SA sold a beauty for frame and fibre for \$3,000 to Critter and Bec Freeman-Penong SA that could have made much more. The Freeman flock is a favourite job of mine due to the great quality at classing due in part to the Borong genetics and realistic budgets.

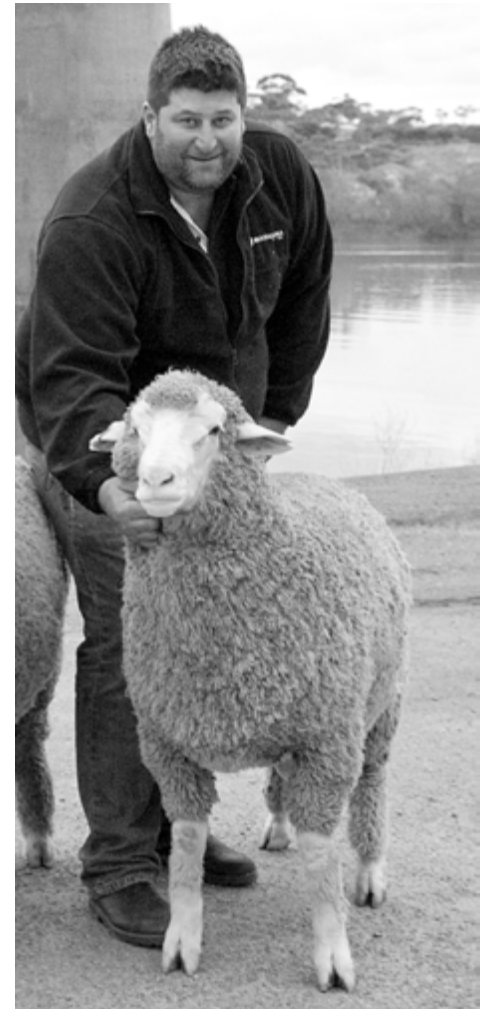
The big **Woodoona - Borrika SA** ram, (yep the one with the heartroom width in that classic bridge photo below) rightly made \$3,000 and was bought by Trevor Gameau-Wanilla SA.

Big ram with great real time figures of 19u 2.8sd 14.6cv 0.2pf typifies Classic sale rams and the needs of progressive growers.

Mernowie - Marrabel SA sold their KP37 son for \$3,000 to the

Treloar family that boasted YCFW 23.9 & YWT 8.3. Great animal as well! How much KP37 semen have you stored Ian?

Flairdale - Cooke Plains SA and Hynam Poll-Hopetoun Vic. sold four good flock rams between them for around \$1000



CLASSINGS CLASSIC '16

Incorporating
WORLD MERINO INSIGHT
MONDAY SEPTEMBER 5th 2016 AT 1.30pm
Murray Bridge Race Course S.A.

www.classings.com.au
Find Us On Facebook

CLASSIC 2015 SALE SUMMARY (2016 SALE ORDER)

STUD	OFFERED	SOLD	TOP	AVERAGE
GUNALLO SA	7	7	\$30,000	\$10,286
GLENLEA PARK SA	4	4	\$14,000	\$10,063
RIDGWAY SA	8	8	\$17,000	\$5,031
ROEMAHKITA SA	3	3	\$5,500	\$4,500
RIDGWAY ADVANCE SA	6	5	\$5,000 x 2	\$3,550
WALLALOO PARK VIC.	2	2	\$3,500	\$3,375
KAMORA PARK SA	2	2	\$5,000	\$3,250
RAMSGATE SA	4	4	\$4,500	\$2,813
SOHNIC VIC	2	2	\$3,000	\$2,500
ELLA MATTA SA	2	2	\$3,000	\$2,250
LORELMO KEYNETON SA	2	2	\$2,400	\$2,200
LUCERNBRAE SA	5	5	\$3,000	\$1,650
HYNAM POLL VIC	3	3	\$1,250	\$1,083
RICE'S CREEK SA	1	1	\$3,100	\$3,100
BORUNG SA	1	1	\$3,000	\$3,000
MERNOWIE SA	1	1	\$3,000	\$3,000
FLAIRDALE	1	1	\$1,000	\$1,000

the industry.

The existing trend of bumping up the fleece weight at all cost using old fashioned genetics is creating animals that will not last the distance if ever unmulesed.

The phrase, "Rich, creamy lock structure and studdiness" and those who use it should be locked away as not to affect our up and coming young growers.

The Classic type stock are proven breeders often bred from renowned mothers and nationwide proven sires producing stock that will survive and give us more lambs per mob. Less wrinkle = less waste and more lambs-it's proven!

There are plenty of on lookers (generally from a distance) who have a decent swipe at our style of animal suggesting low fleece weight, too low for micron and yield and full of hype!

I get a lot of this third hand from industry mates who after a couple of the great red ones just can't help but blurt out just who has dished out the latest sledge!

Those who scream and abuse the most tend to be the most nervous!

No one yet has come up with the goods yet to prove that anyone's supposed lack of density has affected production so much that the extra lambs, staple length allowing twice yearly shearing thus higher tensile strength as well as an ease for lice control hasn't made up for any minor loss if any for fleece weight.

YCFW 17 to 25 are now commonplace with so many of our stud clients which can only have a huge bearing with their, and our commercial clients.

Sure there are now rams appearing that are 30+ yet care is needed as to their implementation in any flock due to the above mentioned negatives.

Fleece weight lift through genetics that incorporate length and density is the only way to go.

Some are meddling yet again with shorter stapled thicker types that produce more waste as a means to appease their client so that their sale animals 'look' as if they are cutting more when it is quite the contrary.

Short memories!

The 2016 Classic team once again will be closely scrutinised at selection as to meet the requirements set in place since the first Classic sale in 2002. Density, length and fibre quality on poll rams that are square, upright and genuinely plain bodied is the norm.

This year the incorporation of the World Merino Insight should see more studs included in the sale albeit meeting the selection criteria that put this sale on the map in the first place.

CLASSIC '15 OVERVIEW



"Bill and Rose appreciate your attendance today in witnessing the nation's progressive studs addressing today's issues which at times complicate the advancement of the genuine dual purpose merino. These plain bodied, easy care animals will advance us to a level as to maximise production in three key areas - Fibre, Meat & Fertility."

This is the quote that I conjured quite a few sales ago which sits on the last page of the Classic catalogue and stands even more meaningful today.

The mulesing debate has raised its frightful head again with more and more onlookers taking note of two things. The important first is the massive uptake of progressive breeders breeding stock that are far easier to manage across the board

than more traditional counterparts and could or do meet non mules requirements.

The awful second point is the fact that PETA and the likes are well subscribed and whilst some things they have tackled have been successful and rightly so, their supporters consider all that they attack must be worthwhile. They then hop on to the bandwagon en-masse! This then affects larger companies who are often threatened with embargoes placed on their own goods until they rid of the offending product - Adidas of late a perfect study.

So, sounds like a red wine induced spiel that has no connection with the great Classic yet the tangle of all of the pre mentioned and the success of the day is paramount to the future of our young breeders.

\$30,000 rams don't just fall onto the ground from nowhere. Careful planning with direction and foresight are essential with today's progressive breeders.

Proven genetics with low breech wrinkle scores, high resistance to skin related problems like water stain, fleece rot, excessive suint, excessive wrinkle and ultimately the blowfly are now in our grasp but way under utilised by too much of

CLASSINGS PTY

WOOL TESTING LABORATORY

Accuracy comes with experience

*Classings wool testing service operating since 1972
utilising CSIRO's Laserscan technology since 1996.*

Bill and Rose Walker

25 Sturt Street

Murray Bridge SA 5253

E: classings@internode.on.net

PH: 08 85323065 M: 0428973804 F: 08 85311277

For all testing requirements visit

www.classings.com.au

KARAWATHA PARK

OFFERED 79 SOLD 79 AVERAGE \$1,814 TOP \$8,000 (POLL)



If you were to grab anyone new into this industry and take them to a day as to capture the essence of all things good about the merino industry, this would be the one.

The Karawatha sale is held in the old, yet recently revamped atmospheric shearing shed hosting 80 pens of some of the best quality polled and horned rams on the 'Coast.

Wise breeding tactics including bulk AI projects and ET programs ensure that this stud will be around for yonks! The next generation of the Woolford clan are as equally excited about the condition and future of the stud as the old fogies are!

A Leahcim Syndicate bred lot 2 topped the sale for \$8,000 which surprised probably no-one! 115kg of structure, frame and density this guy filled the pen and was sold to the Koch's Bunyara via their classer Paul Cousins. YWT 7.7 & YSL 9.4 at 19.6u he should be a winner.

Paul and father John Schaeffer - Buckleboo SA were active early and always buy absolute quality of which Karawatha offer alot of choice. Lot 3 was theirs for \$2,000 bred by WP578 that was purchased at CC'12 and in turn was bred by Ridgway 1137. Their next for a cool \$3,800 was a WP122 son at 18.8u 2.8sd 14.8cv & 0.0pf showing great nourishment and density and 109kg body weight. A good GP395 son followed in lot 59 for a handy \$1,300.

Maybe the pick was yet to come. Way down in lot 77 and bred by SuperSire Glenlea Park 395 (\$51,000 Classic'13) was a cracker that could have been placed much higher in the sale team. He was chased to \$4,300 with the Schaeffer's chuffed to get a super woolled, 103kg beauty.

Matt Cook - Minnipa SA was onto it and stole lot 9 for a WP122 son for \$2,200 and followed this with a lot 20 sneak at \$1,000. Possibly the best of the trio was a GP395 cracker in lot 39 for \$1,500 and 100kg from the paddock loaded with glossy fibre.

I operated for **Aston Station - Poongarie NSW** picking up four starting with one of three great GP395's for a 102kg ripper at \$1,500 the next and highly ranked in pen 31 for \$1,500 followed by lot 35 for \$1,500. An L663 was the last at \$900.

A 108kg, GP395 bred thumper headed the **Andrew Smart** managed Wilkatana's order for a surprising \$800! Next in lot 65, 67 and 72 were great value for money \$600 jobs that didn't reflect the quality of the rams secured.

Andrew Polkinghorne - Lock SA bought a handful including lot 36 for \$3,000 at 109kg for a softy including 2.8sd. Andrew's flock is a showpiece due to great ram selection from two studs with his hogget classing last year a real feature.

Wayne and son Sam Young, avid supporters of Karawatha for years were again valuable support starting at lot 4 for a WP122 goody at \$2,800. A great clean headed lot 10 followed for \$2,000 but I think their best was saved until lot 28 for a red hot GP395 for \$2,000.

Mark Baldock-Kimba SA lent valuable support kicking off with lot 1 of the sale for a WP578 bred square bastard for \$2,000 at 18.6u & 3.1sd. He and ol' man Jeff bought another two which give them automatic selection for beers of their choice post sale.

Keeping it in the family, Tom Davey-Port Neill SA who likes Hannah Woolford quite a bit, bought a ripper lot 13 bred by GP395 for \$2,600 - a great choice on both accounts!

Tim Larwood-Kimba SA easily bought one of the best of the sale at lot 5 for \$3,400. This guy had everything including the genetics on the sire side coming from GP395. If not for the top priced lot 2 this bloke I thought would have had that honour. Another 395 son in pen 12 at \$3,800 also was right up there for quality and 108kg.

Shannon Larwood, was also very active bidding aggressively to \$4,400 for his first purchase for an L530 progeny in lot 8 at 108kg. Maybe the pick of his buys was lot 25 for a syndicate bred poll at 18.8u 2.9sd 15.5cv & 0.0pf loaded with quality fibre and shape.

Robert Koch-Georgetown SA was great help with his six ram haul to \$1,700. This included a bloody good GP395 for \$1,700 with a body weight of 111kg and a dream fibre that typified what the Classings Classic sales are all about!

Its unfair to get this far into this writeup and not mention so many great supporters on the day but briefly...Kym Allen & Co.-Kimba bought three to \$3,400, Woolford Brothers-Kimba secured five to \$2,100 which was a great pen 30 and bred by L530.

The local Beinke family latched onto three to \$1,700 with lot 74 at \$1,600 a pick selection. Brook Seal-Kimba SA three to \$1,000, Darren Collins-Ceduna SA four to \$1,100 including a great buy for \$1,100 at lot 63.

The Trengrove, Inglis, Zibel, Minnipa Ag., Frances, Brophy, Rayson, Crosby, Gregory and Baker enterprises were all good for singles making for another very successful day.





KARAWATHA PARK
MERINO AND POLL MERINO STUDS

ON PROPERTY RAM SALE

FRIDAY 26TH AUGUST 2016

INSPECTION 11AM | AUCTION 2PM

80 RAMS AUCTION

BRUCELLOSIS FREE AND OJD VACCINATED



CONTACTS:
BERT & BARB 0427 274 030
DION & CHELSEA 0427 323 583
BILL WALKER 0428 973 804
SIMON ARCUS 0428 272 210
PHIL ARCUS 0448 908 363



O'Brien Dohne Merino
O'Brien Poll Merino



Auction

Wednesday 3rd August 2016 @ 1pm
Wudinna Show Grounds
Inspection from 10am
Light luncheon provided

50 Dohne Merino Rams
50 Poll Merino / Merino Rams

Enquiries:
DOB (Darren) 0419772173
E: dobandjodie@activ8.net.au
W: www.obrienenterprises.net

Quality Livestock: Scrub: 0427804002
Landmark: Bill 0429802206



Brucellosis
Accredited
OJD
Vaccinated
ASBV's available

3% rebate to outside agents. Notice in writing 24 hours prior to sale.

Westwood
POLL MERINO

CASCADE, W.A.



SELLING 20 RAMS

AT

**ESPERANCE RAM SALE -
SEPTEMBER 2ND, 2016**

Private sales thereafter - first in best dressed!

Leahcim and Glenlea Park genetics in sole use.

Scott Welke

M | 0427 792 044 E | scottwelke@bigpond.com

RIDGWAY ADVANCE - BORDERTOWN SA

OFFERED 100 SOLD 95 AVERAGE \$1,815 TOP \$4,800 (POLL)

The first two rows of any Ridgway Advance auction over the years has been full of exciting even aggressive bidding as old and new clients spar for the right to own some of the best genetics the nation has to offer.

Lot 1 selling for \$2,800 to the Sharp enterprise in Hamilton Vic. was a fair indicator that the sale was going to be another one of those!

Paul and Chris McPherson-Wentworth NSW obviously had one thing on their mind when they fiercely secured lot 2 at a sale topping \$4,800.

Bred by RA100 at EMD 44 and weighing 104kg this bloke would have suited any of our stud clients due to his great carcass attributes and typical RA elite fibre.

JJ Hallum Vic., was in on the act early with purchases at lot 3 for \$2,400 bred by RA252 & lot 5 for \$2,600 by RA060 and went on to secure two more by sale end.

Warrawee Pastoral-Swan Hill NSW made a huge impact on the days final result by buying nine to average close to \$1,900 and starting with easily one of the sale's best at lot 19 for a big, square 'Holy' son coming in at 113kg.

For 3,000 smackers he also had the actual real time figures of 19.4u 2.9sd 14.9cv 0.4pf at EMD 44 and 7 for Fat. I also liked their lot 64 pickup for \$1,400.

The LG Ellery clan from Kingston SA also made themselves famous in securing 13 to average just over \$1,000. I especially liked their lot 52 selection for \$1,800 and bred by 'Holy' - July drop yet EMD 44 - pretty handy!

Ridgway Advance is a prime source of merino rams for **Dirk Stevens - Broughton Vale NSW** and he topped the volume list taking six from the main auction and a further 16 from the mini effort. The pick....probably lot 74 at 17.0u 2.8sd 16.6cv & 0.6pf with an EMD 45!

Ian Daniel-Senior Park-Bordertown SA bought a screamer in lot 4 and bred by RA001. 114kg & EMD 42at 17.4u 2.4sd 13.9cv & 0.2pf he was destined to crack the goods and did at \$4,200.

I bought for **Rob Germein - Port Vincent SA** with an order for two exceptional polls. An RA060 bred scorcher in pen 11 took my eye with outstanding lustre and nourishment and 108kg & EMD 42 for \$3,000. A syndicate bred beauty followed in pen 38 at \$2,200 and study these figures: 18.5u 2.3sd 12.5cv 0.0pf, EMD 43mm at 103kg!

The **Pym family - Rockleigh SA** had a strange look in their eyes when bidding on lot 36 is if they were not going home without him! Correct and \$2,800 later there was victory. Bred by RA493 hosting astonishing fibre with sheen backed up with outstanding numbers: 16.5u 2.5sd 15.2cv and 0.0pf at..... 118kg! Their second didn't disappoint in pen 85 for \$1,500 with more outstanding figures including EMD 43mm.

David and Dianne Farr - Wunkar SA held off patiently and secured lot 31 for a very good RA060 ripper at \$3,400.

I bought **Aston Station - Pooncarie** a single in lot 51 for a sneaky \$1,400, July drop at EMD 41.

RG Brown-Wolsely were good for three after the huge support the year previous. I thought they stole lot 14 for \$1,800 but even better got themselves an absolute belter in pen 60 for \$2,000 exhibiting all that's good with our best merinos.

G. Turner was great support with five buys including a good pen 66 for \$1,900 with 43mm eye.

The Nankivell family-Bordertown SA bought four including a good lot 21 for \$1,200.

The Long-Bendigo Vic. and Ramsden-Naracoorte SA names were a familiar cry from the auctioneers with ten purchased between them.

Gerald Woidt-Coonalpyn SA good with an early RA178 pick at pen 15 for \$3,600 with EMD 44 AT 103kg.

The Carter enterprise-Naracoorte SA bought six right to sale's end.

The Rathjen, Dahlitz, Mickan, Lockhardt, Philips, Riverview Trust, McGorry and White outfits were all there with their one or two purchases which over so many punters added up to quite a bit of volume.

RIDGWAY ADVANCE

BALANCED POLL MERINO'S

Annual Ram Sale - 4363 Emu Flat Rd., Senior
BORDERTOWN, S.A.

WEDNESDAY 10TH AUGUST 2016

Inspection 9.30 - Sale begins 1 pm



Three Generations
out checking the sheep

RIDGWAY
ADVANCE

Offering a team at:
Hamilton Sheepvention
Classings Classic
Ram Sale

ENQUIRES WELCOME

**David, Karen & Devon
Ridgway**

08 8754 2028 / 0409 408 263

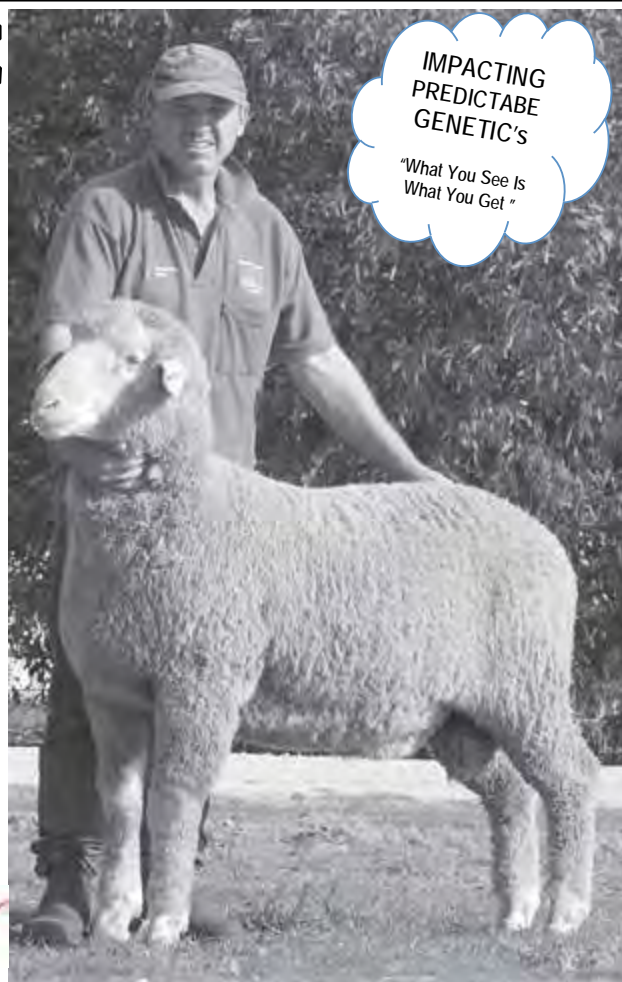
ridgwayadvance@activ8.net.au

www.ridgwayadvancemerinos.com.au

Brucellosis Free
Accreditation



MN 3 - V



IMPACTING
PREDICTABLE
GENETICS

"What You See Is
What You Get"

ELLA MATTA

OFFERED 36 SOLD 36 AVERAGE \$1,052 TOP \$3,400 (POLL)

Due to the nature of the classing run at this time of year between SA & WA, the Ella Matta sale is hard to attend thus I have relied on Ian Turner's sale report for the Stock Journal as a worthy fill for this page...

Passion and commitment well rewarded at Ella Matta

The Heinrich family, Ella Matta Poll Merino stud at Parndana, has a massive passion and commitment to improving the productivity of the Australian sheep flock through their breeding programs. Their dedication to this cause was well rewarded at their annual on-property ram sale last October.

Despite the weather gods turning the taps off, 53 registered bidders competed strongly for the increased large sale offering that included 36 Poll Merinos, these topping at \$3400 and averaging \$1052, up \$92 on the previous year.

Landmark's Leo Redden praised the Heinrich family on their quality and the big dollar investment they make into artificial breeding programs each year to tap into some of the best genetics available Australia wide. For biosecurity reasons Ella Matta has been a closed flock for an extensive time, to control the controllable while working to extend the performance levels of their sheep.

There would be very few studs nationally who could offer the level of verifiable performance the Ella Matta rams have, with a vast majority being well above breed average for indices with Merino Select.

In offering the 36 Poll Merinos, Elders auctioneer Tony Wetherall has little trouble extracting bids. Repeat clients were dominant in the buying, giving testimony to their breeding qualities.

The \$3400 top priced ram was EM140432, an ET son of Centre Plus Poll 907538. On Merino

Select data it ranked in the top 1% nationally for all three indices, FP+, MP+ and DP+, and had EBVs of 7.9 for Yearling weight and 24.3 for Yearling Clean Fleece weight. Andrew Fogden, Gosse was the successful purchaser.

The volume buying in this section was again shared by the three highest volume buyers from the previous year. Geoff Nutt, Parndana led the way with eight rams to \$1000 and at an average of \$800 in great value buying.

Simon Kelly, Mine Creek, Parndana also received great value with six rams to \$800 and at a \$783 average, while sitting between them was Simon Veitch, MacGillivray with seven rams to \$1600 and at an \$1129 average.

Gregor Partners, Parndana East paid the second top price of \$2100 for EM140065, by the same sire as the sale topper, also ranking in the top 1% nationally on all the Merino Select indices.



CLASSINGS CLASSIC '16

Incorporating
WORLD MERINO INSIGHT
MONDAY SEPTEMBER 5th 2016 AT 1.30pm
Murray Bridge Race Course S.A.

www.classings.com.au
Find Us On Facebook

Elite Ella Matta wools

ELLA MATTA

Parndana Kangaroo Island, SA
Poll Merinos & White Suffolks

- ✦ Producing Modern Merinos suitable for high rainfall areas with special emphasis on worm resistance & free growing white wools
- ✦ Using the most suitable genetics Australia wide through AI & ET programs
- ✦ Again offering rams at Classings Classic in 2016 - 5th September (6 rams in last 2 Classings Classic sales sold to \$5000 & averaged \$3000)
- ✦ **Annual on-property ram sale Friday 14th October 2016**
Offering includes 40 Poll Merino rams

Enquiries Welcome - Andrew & Tracie Heinrich

Ph/Fax: 08 8559 6107 ✦ Mob: 0427 596 108

Email: ellamatta@bigpond.com

Check the website for details: www.ellamatta.com



PIMBENA - WIRRULLA SA

OFFERED 79 SOLD 69 AVERAGE \$1,095 TOP \$3,200 (POLL)



It was another great year for fibre quality including length and density across our client base.

Higher quality mums bred from top internal/external sires and A.I./E.T. programs ensure continuation of flock improvement. Despite fleece weight deemed as the most important trait at the minute there is no need to lose fibre quality thanks to all of the genetic 'tools' we have at our disposal.

It is glaringly obvious that to hurry this important trait along ie. select ultra high ASBV's for YCFW without consideration of associated breeding waste is full of danger and needs addressing.

Sire Evaluation trials are a great reckoner for even keel trialling of top end sires from studs across the country amongst a level playing field over a range of years.

Classings P/L is now associated with the classing of the Balmoral Sire Evaluation trial just out of Harrow this year where I classed progeny from over twenty different sire groups. The results of this are at times staggering as they are intriguing where many top ranked sires will not cut the mustard whilst lesser knowns can become 'heroes'!

More on this and another trial associated with the same site later.

CLASSINGS CLASSIC '16

Incorporating
WORLD MERINO INSIGHT
MONDAY SEPTEMBER 5th 2016 AT 1.30pm
Murray Bridge Race Course S.A.

www.classings.com.au
Find Us On Facebook



Great to see yet another successful sale for Les Hamence's Pimbena Poll selling over 70 by day's end with the depth of quality extending year to year.

With the stud catalogue armed with ASBV's and 'actual' figures in a no fuss, easy to read format and the rams looking the goods, the sale took off as it had left the year previous.

Di Thomas and partner John Duncan-Wallala-Wirrulla SA bolstered the sale with some great purchases including a well positioned lot 1 selling for \$2,800. Bred by KP037 (purchased Classic'13 currently ASBV YCFW 20.1) the ram was super long in the body backed up with YCFW 15.1.

Their lot 6 purchase that topped the catalogue also from the same KP037 sire boasted YCFW 17.8 & MP+ 144 of great fibre quality and stance.

Neville Jericho's Traveena Park couldn't make the sale but I was asked to buy him a handful with a budget to suit securing the very best the catalogue had to offer!

Im my opinion lot 2 only just edged out other top sellers on the day and I didn't have to fight too hard to get him for \$2,600. A SuperSire L858 bred son with a backend like a tram, YEMD 0.6 & YFAT 0.0 and filling every inch of the pen I was happy that I will be able to monitor this bloke's progress at the Jericho flock.

Another great grab was lot 8 for \$1,500 again from KP037 and to finish the order a GP395 snorter at pen 14 for only \$1,600 completed a great threesome.

Miles Tomney-Pochera SA who bought well in 2014 backed it up with another great three at the 2015 sale. His gathering began at lot 4 for a very good SuperSire L858 cracker for \$1,700 with

YCFW 16.9 YWT 10.1 & YSL 11.6. Two other L858 bred sons followed at lot 10 and lot 11 for \$2,200 & \$1,700.

Trevor Pittaway-Haslam SA supported well again mustering five for the day across the catalogue of which four were from L858. Maybe his best was lot 24 at \$1,600 with a YWT 11.6 YCFW 13.3 backed up with test figures of 18.6u 3.0sd & 0.1pf.

Regular supporter, Anthony Nichols was again great with a four ram haul including a beauty in lot 5 with a YCFW 13.9 & YEMD 0.1 bred by L858.

The Shiphards-Broanne-Penong SA who were new to the stud the year previous again bought well selecting six and competed across the catalogue to get 'em. I liked their lot 7 pickup for a sneaky \$1,000 for a KP037 son with an excellent YEMD 0.6 & YFAT 0.4 add YCFW 15.4.

Jamie Baker, Ken and Darren Hammat, Daryl Lawrie, 'Snapper' Miller, Milton Tremaine, Scott Trewartha and Dean Kelsh enterprises bought around twenty between them adding vital fuel to the day in the fact that between them all they possibly bid on twice that amount to secure their purchases.

I picked up a great five for Netallie Station-Wilcannia NSW to average around the \$700 mark for more than handy flock rams making a mockery of the typical station order styled selections sent to the bush on a hope and a prayer!

Pimbena is in great shape with securing great genetics in 2015 to 'inflict' on the stud for its ongoing success.



SOHNIC POLL - St. ARNAUD VIC

OFFERED 60 SOLD 60 AVERAGE \$1,497 TOP \$3,200 (POLL)

I believe this would be the best Sohnic sale in a while especially considering the complete clearance in a season that was heading a bit awry! It was deserved as well with the 60 ram lineup looking a treat right to the end.

Scott Nichol森 and Greg Hose have mustered some great genetics over the years and the lineup complimented this. Roemahkita (RO), Glenlea Park (GP), Kamora Park (KP) intrusions have gelled well to create top Sohnic sires who are breeding as well as these new infusions.

The catalogue consisted of the typical figured one would expect as well as a concentration on body weight gains from weaner to 10 month growth and associated deviations.

Tony and Sally Bright-Mt. Wodadara NSW deserved a Sohnic sponsored trip to the Maldives thanks to their volume support. They bought a ripper in lot one at \$1,750, bred by Sohnic 505 which was followed by seven more across the sale. I liked their lot 4 pickup at a paltry \$800 and bred by RO2257.

Sohnic 31269, a top son of GP380, bred a great poll in lot 37 which was another fascination of mine on the day. Tagged 40036, a double poll, September drop at 99kg hence only one year old, lustrous fibre oozing shine and zing, I bid to \$3,200 and jagged him for **Pimbena Poll - Wirrulla SA**. Great figures of 18.1u 2.6sd 14.4cv an aid.

Feeling fairly chuffed in securing these two I added another for **Trevor Gameau - Wanilla SA** at a realistic \$1,400 for a cutter in lot 22.

NL & LJ Kingston-Cambell's Bridge bought well for their four to average just over \$1,200 including a good lot 6, bred by Sohnic 21369 for \$1,400.

Scandalton Partners picked up a pharkin' ripper in lot 2 bred direct from GP380. Square, full of aligned fibre, long and white on a great frame at 111kg made \$1,700 look cheap by day's end. They picked up at least three more.



Hopefully the Hazelwood Nominee clan crossed paths with the Brights in the Singapore Airport en route to their Sohnic sponsored break to Italy due to their great support as well with nine to average around \$1,000!

I became intrigued with two rams (See photo) especially in the lineup and had lengthy discussions with two West Coast studs, Pimbena and Nantoura who I thought would enjoy the quality and the fluid nourishment incorporated. Lot 15-Tag 41384, another Sohnic 505 bred scorcher sold to **Nantoura - Port Neill SA** for \$3,200, a price I'm hoping will look cheap in lieu of good progeny results. 20u 3.0sd 15.0cv at 110kg just added to the attraction. A weaning weight of 47.5 was way above average for the group as was his 10 month 75kg weight. Number one virtue with this ram? Extreme width of hocks and chump in the backend!

Local, Don Erwin also bought well including the third sold for the day for \$2,100 and bred by Sohnic 21910. His lot 24 pick bred by Sohnic 21369 at \$2,000 wasn't much difference for quality. These two in other sales might have made much more!

Bretton Estate bought a few for their commercial enterprise including a scorching lot 25 at 106kg at 17.3...couldn't breed that 20 years ago!

Ray Bibby-Navarre Vic., bought a beauty in lot 10, bred by another Sohnic Sire 10223 for \$1,400 and should have been chased further due to his quality and square behind.

The West, Parry, Long, McClelland, Chapman, Fernandes, Mike and Sonya Hunt, Robertson and Rosevale Ridge enterprises added valued support with their one and two purchases.



In 2014, Stuart Everett of Lone Gum-Crystal Brook SA purchased the top priced poll at the Gunallo On Property Sale - an outlay of \$3,000.

His tag GUN 130-107 might be one to remember for future AI programs for a ram that has thrown some outrageously exceptional progeny at Lone Gum.

At first classing of young ewes and rams on the 28th January '16 his stock were the pick of all sire groups on both sexes.

One outstanding ram will hopefully grace the stalls of Classic'16 - tag LG 150-066. Nourished with superb visual meat traits and the most elite fibre this guy may yet be retained at the stud.

His father the already mentioned 130107 was ET bred by SuperSire Kamora Park 37 who was also ET bred by another SuperSire, watch the hocks, Leahcim 154.

All involved ET donor mothers were of extreme quality hence predictability of results is mostly guaranteed.

As the year wears on I will re visit the progeny at Lone Gum and give anyone who gives a toss an update.



CLASSIC'16: KAMORA PARK

The massive KP509 bred by KP38 will lead the Classic'16 Kamora Park team and could possibly take the stud (with other great team mates) to the great heights reached a few years back at the Classic. The stud hit the \$10,000 mark twice within three rams including KP522 bought by Brookdale WA.

Back-end supreme with pure whiteness of fibre with density I didn't have to plead too hard for his inclusion! The pre mentioned KP522 bred a scorcher via A.I., KP51, who would be the perfect pair for 509 to totally blitz Classic'16. What kind of bribe Colin & Wade?!!

WALLALOO PARK - MARNOO VIC

OFFERED 172 SOLD 132 AVERAGE \$2,309 TOP \$10,000 (POLL)

"We chase the sweetest wools we can find and that is why we've been here coming since 1995" BERT WOOLFORD IN S&L REPORT

There's something about that longish drive to Marnoo for the Wallaloo Park On Property sale every year that I really enjoy. There's a long history now between our two enterprises where, due to the repeat successes of these genetics over so many client's stock the annual pilgrimage is certainly no chore.

The sale took off like a rocket with lot 1 selling to Langdene-Dunedoo NSW at an inspiring \$10,000. Bred by WP184 who in turn was sired by Ridgway 1137 that hero that sold for \$25,000 in the Classic a few years back. Why so good? Double Poll gene, super long body and standing square, PFAT 0.3 & PEMD 0.68, YCFW 19.8, elite type fibre and white, your choice!

Scott and Anna Brien-Wellington NSW are only back due to successes with previous purchases and didn't hold off for long grabbing lots 2 & 3 for \$5,000 & \$8,500. The first a Casper son followed by a WP196 who in turn was actually bred by Casper himself! The first bloke had YCFW 18.5 at DP+ 154 and lot 3 DP+ 151. They also bought well at lot 20 for \$4,500 exhibiting great fibre and YCFW 21.2.

Craig Dewar's-Woodyarrup WA was on board to snatch a double polled WP184 bred goody at YCFW 21.5 for \$7,000.

But! Here's the stuff that good sales are made of with a return client of fifteen years selecting another ten rams. Mark and Kay Barr-Newdegate WA averaged \$2,200 for their haul which began at pen 8 for a WP33 bred snorter for \$4,000 of which I held in high regard. Three pens later a Casper son for the same spondoolee.

An excellent horny followed at lot 33 for \$3,000 at DP+ 145 and right next door at 34 an extremely high indexed horned ram again selling for \$3,000. Try these great numbers: PWT 4.54, YCFW 27.8 and DP+ 161.

Bert & Dion Woolford Karawatha - Buckleboo SA made the huge trek from the 'Coast and bought some rippers to maintain their high calibre stud in part due to this very stud!

They opened up their account at lot 7 for a Eureka bred shredder loaded with all the good things to do with nourishment and lustre at \$3,000.

Another Eureka at pen 36 was the pick though as hinted by the \$5,250 price tag! Super nourished with correct

density I look forward to some great results from this sire. He also exhibited DP+ 156 & YCFW 19.3.

Bert and Dion may have hoped that by lot 116 that things may have slowed up a bit but there were a few eyes on a stunner bred by WP111, full of all the good things in the merino tool kit!

Lustre, super crimp and fluid nourishment on a great shape brought on a three way battle between Ramsgate and yours truly! The croppers won and paid a hefty \$6,000 for the worthy honour of owning one of the top six animals on the day. DP+ 158, PEMD 0.8, YWT 7.3 & PWT 4.76 added to the carrot waving!

Stuart Everett - Lone Gum - Crystal Brook SA and Dean Pearson-Murray Bridge travelled over with me with both securing rams.

Stuart held off well and picked up a creaming lot 41 for \$3,000 which turned into a realistic price compared to his next! Bred by WP188, another R1137 prodigy, this guy was covered in silky fibre combined with great stats: PWT 5.06, YWT 7.13, YCFW 21.4 & DP+ 154.

Lone Gum's second pickup wasn't quite a 'steal' at \$5,200 yet results would normally prove otherwise. This bloke actually turned his toes up before meeting Sally disappointingly. Of course he was in my top six for the day at 19.6u 2.8sd 14.0cv 0.1pf & DP+ 159.

Throw a bloke in the car for a ride to a stud like this and they just can't resist! **Dean Pearson - Brinkley SA** snatched a \$2,000 ripper before we could blink and who was the happy chappy then?!

I bought two for **Paul Schaeffer - Nalino-Buckleboo SA**. A WP763 bred steal for \$2,500 at 17.7u & 2.9sd. The pick though at lot 147 for \$3,000 was well liked by many due to his fibre makeup, stance and a square backend. Add to this YCFW 23.4 @ DP+ 156 and he should breed some great young rams for Paul to enhance a commercial flock in top order.

Jed and Craig Keller's-Ramsgate-Tintinara SA know the WP quality and no surprises with them turning up for more. There lot 64 pickup for \$2,000 was especially great for stats

including YWT 8.47.

A replacement ram was sourced from the WP reserves and was added to pen 68 which suited the Kellers to a tee as he was just the ram they were after.....and so were all of us! Double poll gene tick, fibre exotica tick, square arse tick, density yes please, one nut... no! Bred by WP184 and YCFW 20.3 he was popular and hit \$6,500. Watch this stud!

I bought **Richard Harkness** a sire for his successful **SWM** stud at Tintinara SA. \$5,000 and bred by WP111 with great fibre again at YCFW 15.2 & YWT 6.6. he can only add to the great things happening at this stud as well.

The spirit of **Fred Leo - Leovale - Newdegate WA** was in the room as he was nowhere to be seen yet purchased lot 31 for \$4,000. I had him well marked in my book especially considering his density yet showing good staple length and YCFW 20.4. He was a grandson of WP 'Magic.'

The Mudfords-Gilgandra NSW were great with their five picks including a good square backed spring drop in pen 27 at a bargain \$1,250.

John Heard-Tooan Vic., was again great with his local support in picking up six for the day and average just over \$1,300.

This report could go another two pages due to the amount of registered buyers on the day but there were another twenty buyers not mentioned here that all bought up to six rams to make this another successful Wallaloo Park exhibit.



Year	Tag colour	Year	Tag colour
2008	Black	2016	Black
2009	White	2017	White
2010	Orange	2018	Orange
2011	Light green	2019	Light green
2012	Purple	2020	Purple
2013	Yellow	2021	Yellow
2014	Red	2022	Red
2015	Sky blue	2023	Sky blue

In W.A. all growers are fastidious on tag colour per year which has always been the case until you ask what year orange was! S.A. was slower initially to catch on but now all flocks that I would class stick to the colour system. Have added this as we are all getting older and not always in a google situation!

CLASSINGS CLASSIC RAM SALE 2016

MURRAY BRIDGE RACECOURSE S.A.

Monday 5th September

100 POLL MERINOS 100



- GUNALLO - SA
- GLENLEA PARK - SA
- RIDGWAY - SA
- ROEMAHKITA - SA
- RIDGWAY ADVANCE - SA
- WALLALOO PARK - VIC
- KAMORA PARK - SA
- RAMSGATE - SA
- SOHNIC - VIC

- ELLA MATTA - SA
- LORELMO KEYNETON - SA
- LUCERNBRAE - SA
- HYNAM POLL - VIC
- RICE'S CREEK - SA
- BORUNG - SA
- MERNOWIE - SA
- FLAIRDALE - SA
- KIANDRA - SA

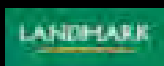
- PENROSE - WA
- ORRIE COWIE - SA
- TERRICK WEST - NSW
- TOLAND POLL - VIC
- SWM - SA
- CODDINGTON POLL - NSW
- RADNOR - SA

"Rams specially selected for fibre & frame as to further enhance progressive stud & commercial flocks. 100 hand picked Poll Merino Rams from South Australia, Victoria & Western Australia's leading progressive, free skinned studs".

**Enquiries to: Bill & Rose Walker – Classings - Merino Advisory
and Fibre Testing Laboratory**

For sale update and catalogue go to
www.classings.com.au

Mob: 0428 973 804 Office: (08) 8532 3065
classings@internode.on.net



ESPERANCE RAM SALE

PENROSE POLL WA
WESTWOOD POLL WA

OFFERED 36 SOLD 32
OFFERED 20 SOLD 20

AVERAGE \$973
AVERAGE \$1,260

TOP \$1,400
TOP \$5,000



The Pengilly's Penrose Poll the Welke owned Westwood stud are both studs from the Cascade area north west of Esperance that are both holding their own, increasing sales and depth of quality by the year. Both studs are embracing available technologies as to keep up with the local and interstate demand which also appears to be on the lift.

Due to their success the year previous, Penrose kicked off the auction and sold thirty two of thirty six offered.

Three rams sold for \$1,400 over the sale's duration. Lot 2, a scorching L858 son. Fibre great with density this poll had a YCFW 16.5, PWT 6.7 & 0.0 YFAT and sold to Paul Ietto-Grass Patch WA. He went on to buy another seven including an L33 son for \$1,100 and an excellent L2528 with density including YCFW 25.0!

The next at the top price was bought by Josh Sullivan-Gibson WA for a Leahcim 2528 son with a YCFW 20.0, YFAT 0.5 and YEMD 1.2.

The last was at lot 27 and bred by GP395 for \$1,400, selling to Gemma Walker with great fibre and DP+ 148.

Brad Lewis-Scadden WA won the gong for most pickups with eight heading his way at very realistic pricing. He kicked the sale off with the first of the day and often the bargain, and was, at \$900 for a square 104kg thug. This guy was bred by the SuperSire L858 who has influenced countless studs across the country.

Brad secured another 858 in lot 4 at 18.0u 2.9sd, YCFW 16.8 & 0.0 YFAT. An excellent GP395 (\$51,000 Classic'13 sale topper) son in lot 7 followed in lot 7 with YCFW 18.2, YFT 0.1 & YEMD 0.7 at \$1,100.

Mark & Liv Walter - Cascade WA buys well from both Penrose and Westwood including the five here including lot 31 for \$1,000 with YFAT 0.0 & YEMD 0.9.

Malcolm Leske-Cascade and Will Harvey nabbed two each with Will paying \$1,200 for a WP662 at 18.8u 2.5sd & 0.0pf, YCFW 16.5 & MP+ 147. The other, an L33 boy for \$1,300.

I asked Leigh West to bid on my behalf for Broughton Vale Station-Little Topar NSW and he secured three in the process at \$600 each.

Westwood Poll - Cascade WA had the sale of their career thus far with a healthy \$1,260 average, selling 20/20 to a top of \$5,000. I would like to revert back to a quote in Cullings'15 mentioning a ram lamb that Scott Welke purchased from the Brookdale dispersal earlier that year....

"Brookdale 012, a son of L858 popped up at classing amongst the Westwoods and didn't disgrace showing tremendous fibre lustre. He will start another stud family for the Welkes."

After a very brief discussion with Scott Welke it was decided to enter this ram into the Esperance ram sale considering the fact that the stud already had two sires of L858 blood - one from Brookdale the year previous and another I bought on Scott's behalf at Glenlea Park's On Property sale the year before that.

The rest is history with that same animal topping the Esperance Ram Sale at \$5,000 - a new record for that sale and a newy as well for Westwood for top price and average.

I had made a few SA studs aware of this bloke as his pedigree was fantastic. Bred by L858 (\$22,000 Leahcim On Property 2010) via an Embryo Transfer bred mother named 'Elle' whose mum was in turn ET'd to GP004 (\$10,000 Classic'09) that SuperSire who pumped out money makers a few years back.

Two of 'our' SA studs competed to force the \$5,000 final bid. Borung-Waikerie SA were losing bidders to Ramsgate-Tintinara SA who will use the ram as a semen sire - shown below with new owner Craig Keller of Ramsgate...

His virtues include fibre density with great staple length, fluid nourishment with bold crimp, excellent test results with a tram like backend and mammoth like body length. 19.4u 2.5sd 13.5cv & 0.4pf. A majority of Mid North and Riverina studs could utilise a ram like this as a breeder of productive yet plain animals to stem the flow of Dorper popularity in the bush!

Leigh and Karina West - Gibson WA have been avid Westwood supporters since purchasing a few hundred ewes from the stud a few years back. They purchased four from the auction to a top of \$1,400 twice.

Both of these were bred by SuperSire GP395 (Classic'13 sale topper at \$51,000) and both with bold crimped fibre. YCFW 16, YFAT 0.2 & YEMD 1.3 with the first and YFAT 0.3 & YEMD 1.4 and 19.9u on the second.

Another at \$1,200 and bred by home sire WW39 had the excellent figures of 17.5u YCFW 15, YFAT 0.1, YEMD 0.7 at MP+ 151.

Mark and Liv Walter - Cascade WA share the same interest and were also good for three purchases for their flock of great quality.

Their first pickup was a classy Glenlea Park 363 bred poll at YFAT 0.9 & YEMD 1.2 for \$1,300. Their next two selections at \$1,000 & \$900 reflects great support from the Welke's first ever client yet suggests that for the extreme quality procured at this price the clientel base are stealing many!

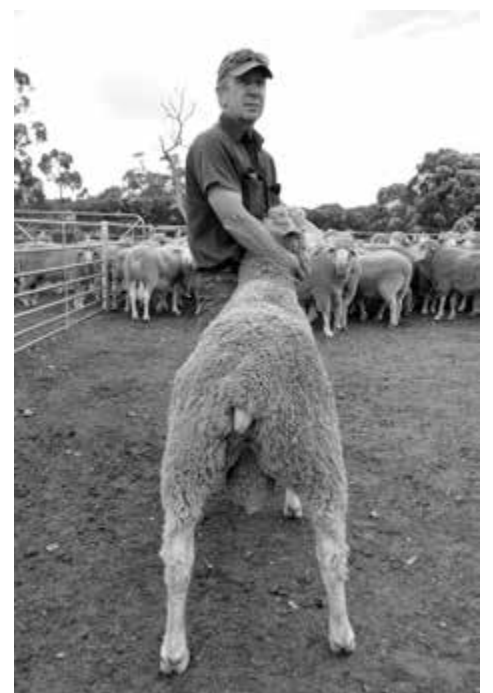
Broughton Vale Station - Little Topar NSW are very keen on the Westwood Polls and through the good work of Leigh West, bid on my behalf to procure five.

Two at \$600, one at \$700 and two more at \$800 for the quality at hand is another reason Dirk Stevens of Broughton Vale has alot of confidence in this stud considering these are seen as the top twenty of the stud except for retained reserves. Yet another hint that the Westwood (and Penrose) clientel is small at the minute yet growing by the second!

Gemma Walker-Jerdacuttup WA picked up the fourth on offer in the Westwood lineup for a very good GP363 son at 18.4u 2.9sd 16.0cv & YFAT 0.3 & YEMD 1.4 and the second highest MP+ @ 145.

K&M Norman-Ravensthorpe WA were handy for their three all at \$1,100 each, two from Leahcim 1085 and the other, GP363 bred.

Will Harvey also bought three, two at \$800 and one at \$1,200 for a GP363 with YCFW 16. One of the \$800 fellas and last in the sale lineup had the highest YEMD of 1.5.





Paul Swan of AWI spoke so well at the Blueprint Launch in April that it made me instantly wish that I'd tried a lot harder when I was a kid at school! He was full of great facts and pointers in what needs addressing to increase production of our merino flocks. A few hints...

- Improve lifetime weaning rate.
- Restrict weaner mortality rate.
- Increase lifetime wool cut.
- Rid of dry ewes after second dry effort (70% of susceptible dry ewes will produce ewe progeny that will also have this trait.)
- Lamb in small mobs where practical.
- Attend workshops like Lifetime Ewe Management (LTEM) and similar which he believes is critical for industry growth. SA & WA was mentioned to be behind the eight ball with adoption rate of LTEM.

All the previous can be addressed and discussed at such events with like minded growers and professionals industry providers.

Some of the expanded points although commonsensical were a great reminder for us all to keep the finger on the pulse and always challenge ourselves toward increased productivity.

- Vibrant and productive industries are attractive to investment – both in terms of productive capacity, but also the careers of the young and bright.
- We've been through a bloody tough 25 years, but are emerging from it an industry transformed – **we've increased by 50% the value of the industry despite having less than half the sheep**, and achieved great gains in the income the average sheep generates in a year. Essentially, the well bred and managed Merino ewe is a high value, blue chip stock.
- Looking ahead, if adult ewe numbers are to remain low due to rising protein demand (as we expect), then our ability to grow the wealth of the industry in our resource limited Australian environment depends largely on our ability to grow the lifetime productivity

of our ewes – the number of lambs she weans in her lifetime, and the value and weight of her fleece.

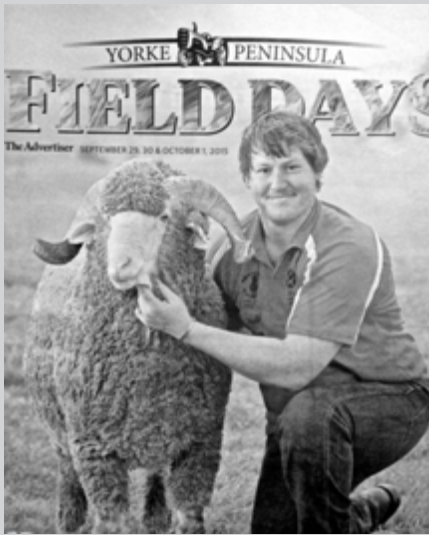
- A great irony, and great advantage we have, is that so many of the things we need to do to maximize the productivity of our ewes over the coming years and decades are relatively simple, and reasonably well known (scan, condition score, look after twin bearers, wet/dry at lamb marking, culling repeat dry ewes, breeding a well balanced ewe.....) – so sorting out the passengers from the performers.

“That's why we've built the foundations for some wonderful decades, but have much to do.” Paul Swan-AWI



LUCERNBRAE - CALLINGTON SA

OFFERED 50 SOLD 33 AVERAGE \$1,112 TOP \$2,600 (POLL)



The poll ram is king until you see a great horned version like this one! Held by John Dalla of Orrie Cowie this great photo made the cover of an Advertiser insert promoting the Paskeville Field Days in 2015.

Nice to see another part of the state promoted as opposed to the often lazy reporter's effort of heading two hours north! Lucky it was a YP promotion!

Maybe if all horn set and structure was as good as this, the poll might not have rapidly become as popular as what it is today. The general consensus around the traps though is that the quality of the poll version is now as good ever deeming it unnecessary to consider a horned version except for topping up an order.

My horn ram orders for commercial and stud clients nationally was zilch!



CLASSIC'16: ROEMAHKITA

Had an outstanding classing at the Dahlitz's Roemahkita a couple of weeks ago. The two rams pictured are a testament to the stud's direction in safely taking the stud in a density orientated direction.

Bred by two great Roemahkita mums with a splash of semen from JC&S 130242 Joe is holding 150092 reserved for Adelaide and I'm holding one of the best this stud has entered into any Classic sale.

Keep an eye out for 150007 at Classic'16.

Nothing new at Lucernbrae for 2015 - Great great quality bred polls at over realistic prices giving many a chance to access prized genetics for too much of a bargain!

I couldn't make the sale for the first time in twenty years I'd say. I went through the rams just prior to sale day and adjusted my catalogue for ram/client suitability and asked Rose nicely to bid for me/clients on the day. She and Megan, our number one Lab assistant did a great job while I drank rum in the pub wiv' me mates!

Kym and Denise Frahn and Kym and Michelle Thiele were essential participants on the day (and a welcome sight coming down the driveway for the Paechs!) as they secured fifteen rams between them including the very top gong.

An excellent Lot 3 bred by Leahcim 282, the \$38,000 sale topper bought by Superior Wool Syndicate at Leahcim On Property Sale 2013 of which Lucernbrae are shares in) topped the day at \$2,600 and bought by the Frahns. Test results: 19u 3.1sd & 0.9pf. They went on to buy another seven including another three L282 sons.

Kym and Michelle Thiele-Pompoota SA bought a cracker lot 2 again bred by L282 and was held in high regard by most of the punters. Their next was a WP 'Bartel' son also owned by Superior Wool Syndicate in pen 6 and maybe just as good as the first but selling for \$1,200. They added another five to their tally and averaged around \$1,500.

Mark Humphries-Brinkley SA stole lot 1 for \$1,000 whilst all were napping and added lot 9 for \$900. Both rams were bred by L282.

Rose secured five for **Netallie Station - Wilcannia NSW** and averaged around

\$800 with all of them beauties! The pick of the bunch and bred by a Glenlea Park sire was in pen 13 for a mere \$800!

Critter Freeman - Penong SA gave me a considerable budget to buy one ripper from the sale and had Rose missed on lot 7 this bloke would have been the obvious choice! That lot 7 made \$1,600 and bred by L282 with the figures of: 19.3u 2.7sd 14.2cv 0.5pf.

Yet another L282 was a standout in lot 19 which sold to Aston Station-Pooncarie NSW for a \$1,000 bargain. 17.8u 2.5sd 14.3cv & 0.1pf reflects the excellent breeding behind this underrated stud.

Neil Harvey-Woodchester SA were good for three including a L282 for \$1,500 in lot 32. The Coopman family-Tungkillo SA bought two including a good lot 4 and Lucernbrae sire bred to average \$900 over the two.

Robert and Ian Paech-Tepko SA bought two to \$1,100 and Murray and Eric Frahn helped out with two for \$600 each.

Have a look at the Lucernbrae's if you never have previously as the quality here is as good as it gets for very realistic pricing!



One of the greatest shaped ewe hoggets from the 2015 classing over the whole year would have to be this great girl we found at the Rowett's flock at Mundulla SA.

Shown here with proud owners Peter, Kerry and Steven there were quite a few close to this but she stole the show once drafted. Pure Mernowie blood for yonks and well looked after this flock is renowned for its growth and huge staple length.

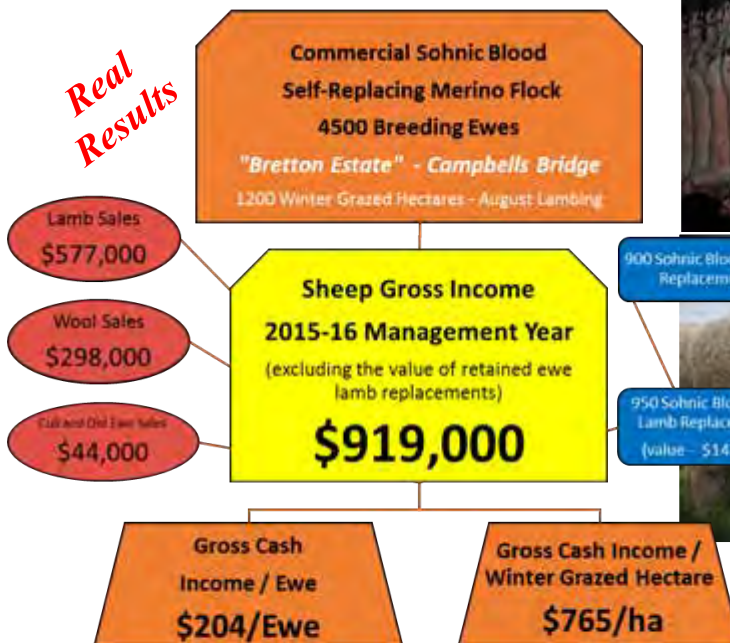
SOHNIC MERINOS



Improve YOUR Bottom Line

RAM SALE
Friday 16th
September
2pm
@ Marnoo East

*Real
Results*



Sohnic in 2016

Bendigo Sheep & Wool Show , Hamilton Sheepvention,
Classings Classic, Marnoo Field-Days - 22nd Sep

Achieved using 3 main drivers:

- Quality Sohnic Genetics
 - Best Practice Ewe Management (Pregnancy testing, Lifetime Ewe, Focus on Joining)
 - Bretton Auto-Feeder -
- A major time saving, fully automatic finishing system designed to replace traditional self-feeder type grain feeding systems.
Changes the way you look at feeding lambs

BRETTON AUTO-FEEDER



www.sohnic.com.au - enquiries@sohnic.com.au - Scott Nicholson 0438 086 403 - Greg Hose 0427 507151



ANNUAL ON PROPERTY AUCTION

**THURSDAY
1ST
SEPTEMBER**

**Inspection 11am
SALE 1pm
SA time**

**90
POLL
MERINO
& MERINO
RAMS**



**Gunallo "BOND", top priced ram at Classings
Classic 2015, selling for \$30,000**

**ALSO SELLING AT
Hamilton Ram Sale**

Tues Aug 2nd

Classing Classic Ram Sale

Mon Sep 5th

Adelaide Ram Sale

Fri Sep 9th

**BRUCELLOSIS
FREE**



Ovine Brucellosis Accredited & MN3

"GUNALLO GIVES GREATER GAINS"
www.gunallo.com.au



Ray Schroeder
0427 778 485
ray@gunallo.com.au

Brad Schroeder
0400 335 660
bradleyschroeder@hotmail.com



Michael Lawrence
0439 078 872

Stud Adviser
Bill Walker
0428 973 804

David Daniel
0407 975 773

Wallaloo Park MERINO & POLL MERINO STUDS

Here at Wallaloo park we offer a tethered sale structure which is client friendly. This allows buyers the opportunity to compare all attributes and evaluate structure without the hindrance of straw or gates.



The Wallaloo Park bloodline is recognised as one of the leading suppliers of merino genetics across Australia. Having proven results over all bloodlines. We aim to maximize constitution, wool cut, temperament and milking ability to maximize profit for our clients.

True Dual Purpose Focus

- Wallaloo Parks Pre potent genetics allows specialist sires to be used effectively.
- Stud ewes at Wallaloo Park are chosen for their ability to maximize kilograms of meat and wool per hectare.
- 1500 stud ewes this year marked 131%, with twin mobs up to 191%(109 ewes) and averaging 171%.



2015 On Property Sale -Top Ram sold to Gary Cox Langdene stud, NSW for \$10,000 From left: John, Kate, Trent & Jenny Carter



2015 Adelaide Top Ram Sold to Mark & Kym Kerin - Gullengamble Stud, NSW for \$18,000

The 'Walladale' name has been reborn, due to market demands and a more measured breeding direction, through the help of ASBVs, which have been measured and used in Wallaloo Park for 5 years now. With a positive trend emerging for genetic gain on certain traits.

The Walladale family will be driven by ASBV selection pressure to utilize productivity, while also still maintaining a stringent visual classing regime.

First steps have already been taken with a select nucleus of ewes specially selected from the Wallaloo Park ewe base that will complement the Walladale breeding focus. Also with 2nd outcrosses born in April 2016.

We are all very excited to see where this family will take us, and will complement the strong, predictable Wallaloo Park breeding direction in the future!



2015 SALE RESULTS



- Classings Classic – Top \$3,500 & average \$3,375
- Adelaide – Top \$18,000 & average \$10,666
- On Property Sale –Top \$10,000 with 21 stud rams average \$5,310 and 119 flocks average \$1,530

2016 DATES

1st & 2nd August
 Monday 5th September
 Wednesday 7th September
 Thursday 15th September
 Thursday 22nd September

Hamilton Sheepvention display - site 369
 Classings Classic Sale, SA 2 stud polls
 Pre Sale Inspection of rams 11am - 3pm
 On Property Sale - Top of the Drop -140 rams
 On Property Field Day - Display, semen sires & grade rams for sale



ALL WALLALOO PARK SHEEP ARE APPROVED VACCINATES, OJD MN3 & BRUCELLOSIS ACCREDITED

John & Jenny 03 5359 2202
John 0427 501 431

Trent & Kate 03 5359 2290
Trent 0427 776 114

info@wallalloopark.com

www.wallalloopark.com



@wallalloopark

LUCERNBRAE POLL MERINOS

ANNUAL ON PROPERTY SALE

**THURSDAY 4th AUGUST
at 1.00pm**

Inspection from 11.00am



**ALSO OFFERING RAMS AT CLASSINGS CLASSIC
DISPLAYING AT KEITH AND MURRAY BRIDGE**

**Contact: Keith and Judy Paech
876 Bremer Valley Rd, Callington
Ph (08) 8538 5092 mobile 0415 701 493
email: lucernbrae@internode.on.net**

MERNOWIE - MARRABEL SA

OFFERED 62 SOLD 60 AVERAGE \$1,485 TOP \$4,000 (POLL)

I have condensed the Alisha Fogden Stock Journal report as well as Mernowie's own website report as to a summary of the day's proceedings. I cannot get to this sale yet the Rowetts are great supporters of the Classic sale and Cullings Newsletters and we enjoy their genetic progress from year to year.

MERNOWIE stud celebrated 40 years of breeding Poll Merinos in style, by recording a total clearance and increased average at its 28th annual ram sale at Marrabel on Friday last week.

In total, the Rowett family sold all 72 Poll Merino rams on offer to \$5200, averaging \$1725 – up \$232 on the 2014 sale average.

The \$5200 top-price ram sold to long-time clients the Groves family, Karawa, Booleroo Centre, who also bought the top ram at last year's sale.

The 101-kilogram April/May-drop had a greasy fleece weight rating of 130 per cent measuring 20.3 micron, 3.3 standard deviation, 16.1 coefficient of variation and 99.1 per cent comfort factor.

It had Australian Sheep Breeding Values of 10.4 for yearling weight, 22 for yearling clean fleece weight, -0.5 for yearling eye muscle depth, -0.2 for yearling fat cover, and Dual Purpose Plus Index of 154.

The Groves' bought three rams, including the second highest-price ram at \$4800, averaging

\$4800.

Brendan Groves said they bought "easy-care" rams solely from Mernowie for their "free-growing, bright white wool, and big frames".

"We are having a really good season at Booleroo Centre, receiving 20 millimetres for the month of September," he said.

The third highest-price rams at \$4600 went to Leonie Mills, Morley, Cowell, and PJ&AM Rowett, Bordertown.

Ms Mills bought another at \$1400.

Her top ram weighed 101kg, had a greasy fleece weight rating of 113pc measuring 19.9M, 3.5SD 17.4CV and 99.7CF, while the Rowett ram – their sole purchase – was 98kg, with a 132GFW measuring 18M, 2.9SD, 16.2CV and 99.9CF.

Sale Results

72 Poll Rams in main auction, averaged \$1725.

Top ram sold to Wayne & Brendan Groves, Booleroo Centre for \$5,200.

2 Stud sires went to Morley Stud Cowell paying up to \$4,600.

Brendan Kluska Kiandra Poll Merino Stud, Keith purchased 1 ram.

Volume buyers included Burge Estates, Tanunda, 7 quality rams to \$4000.

Yednalue Station Carrieton 7 rams,

Andriske Farms, Loxton 6 rams,

DA & KA Zerner Eudunda 5 rams,

JJ Mc Clure Wilcannia 7 rams,

Mark Bowen Mildura 4 rams.

I & M Kelly Lock 4 rams. RA & SM Leaver Rhynie 4 rams.

There were 29 individual buyers at auction.

A number of rams sold from \$600 providing real value for clients with a lower budget.

Private sales have been outstanding and will result in a record clearance at Mernowie.



MERNOWIE POLL MERINOS www.mernowiepollmerinos.com

so Baabara what do you look for in a partner?

A Mernowie ram with ASBVs....

On Property Auction.
Friday 16th September.
I,R&D ROWETT.
MARRABEL S.A.
Ph: Ian 0418486050
David 0419839280

J. Dunstan www.jmdcartoons.com.au

GLENLEA PARK

OFFERED 133 SOLD 123 AVERAGE \$2,030 TOP \$8,000 (POLL)

One of the most staggering things to do with this giant sale is the amount of individual buyers there are over 133 rams on offer. Over 35 different purchasers were on hand to pay whatever it took to secure these top genetics.

Top gong award could be split amongst Bullapucky taking home eight, Keilira Station with nine, the Schillers with their seven to average \$2,600, the **Evans Family - Wunkar SA** latching on to the top price and securing another later in the sale or just the great tucker on hand all day!

SuperSire GP004 breeds top poll rams nationally via AI and although now an old fella residing at Will Lynch's Boorana-Lake Bolac Vic he decided to pump out a lot 1 winner at \$8,000 to the Evansdown enterprise. With a GFW 112% and EMD 40 this fella will even further enhance this high end Riverland flock.

Keilira Station-Kingston SA, added to their great Ramsgate haul with nine over the day adding alot of competition as to keep the buoyancy throughout the sale. They averaged over \$1,100.

Bullapucky-Kingston SA bought eight to \$2,300 and averaged \$1,750. One of their best picks might have been lot 37, bred by GP367, with a GFW 135% exhibiting great density yet the extremely soft fibred figures of 17.2u 2.7sd 15.7cv & 0.0pf. He deserved the \$2,300 price tag.

Will Lynch-Boorana-Lake Bolac Vic., boldly bid on lot 2 to \$6,250 and scored another GP367 ET bred beauty!

Peter Gilbertson-Lameroo SA was great with his typical support and every purchase was a winner. Lot 3 at \$6,200, lot 20 at \$3,200 and my pick of his group, lot 24 bred by GP739 for \$3,400 suggested as to reasons why his commercial flock is of such high quality.

Nareen Station-Nareen-Vic bought a very good lot 4 for \$6,500 bred by GP380 with a GFW 121% and good test figures.

Number one Classic Sale ticket holder and supporter, Rob Thiele secured a GP367 for \$4,200 that filled the pen and showed up with a GFW 118%.

The Schiller family from Lameroo SA might be sipping Glenlea Park sponsored nightly sips of expensive cognac due to their excellent six ram purchased support on the day.

I had a very realistic budget from **Penrose Poll - Cascade WA** for a wizzer and managed to hold off until lot 32 and secured a ram that ticked all of the boxes. Bred by the everlasting WP988. He cost \$6,200 with GFW 118% at 19.9u 2.7sd 13.6cv & 0.1pf.



It's important to note that this ram was super free, exhibited a bold lustrous white fibre and had one of the longest staples in the catalogue. All this yet 18% above the average of the bunch for fleece weight. Some visually thicker animals couldn't match the fleece weights of the freer animals of which this stud is famous for. Free with density equals more lambs, ease of management, less deaths and less skin related issues as a reason to cull. The ability to shear twice a year is an option as a means to improve tensile strength and animal health in particular in controlling the feared louse.

The difference between a \$6,200 top GP ram and a \$1,500 top GP ram will be ratified at the end of this year when we will compare progeny from the two. Lot 106 at \$1,500 slightly thicker visually and bred by GP455 which Wallaoo Park purchased from Pete at Adelaide ram sale in 2013, was bought as a travelling companion to the Penrose top ram. At day's end they both looked terrific! The thicker of the two was only 94% fleece weight-24% less than the higher priced poll.

Two Tintinara identities really like the Glenlea Park rams. **The Brophy boys** and **Aaron Freeman** are wise blokes and knew where the goodies were.

Aaron was first off the rank with a ripper lot 33 for a measly \$1,500 for a WP988 recruit. Right next door at lot 34 the Brophys began their collection with a spiffy L858 son for \$3,200 at GFW 100%. They had to go to \$4,200 for their next at lot 41 for a GP739 son at GFW 120% and looked the goods.

Aaron was next with two consecutive lots at 87/88. The first at \$2,600 with GFW 121% with excellent obj. figures and bred by GP455 was a

great pickup as was the next at only \$1,000 full of nourishment and exotic fibre. Another 455 at \$3,800 filled the bill and both orders were fulfilled.

Dean Pearson - Brinkley SA held off patiently until his favourite lot 63 came up for grabs. He got him for \$3,000 and try these numbers: 18.9u 2.5sd 12.2cv & 0.0! All this yet a GFW 110%. Had this boy been a perfect poll he may still be residing at Pinnaroo!

Angus McLachlan - Rosebank - Mt.Pleasant SA secured lot 65 for \$3,600 and was bred by WP988. GFW 125% and a cutter yet a 2.8sd ensures skin issues will be kept at bay.

I spoke to **Andrew Smart of Wilkatana** by phone three quarters the way through the auction who reminded me of his order! Surprisingly or maybe not, it was easy to find nine in the short space of time until sale end! Only some of these were passed in lots of which it was difficult to see just why they were.

The familiar names kept flowing all day where to mention them all now without expanding is a little unfair as they spent the dosh like anyone else on quality rams.

The Carmichael, Vogelsang, Prosser, Heusler, Heinicke, Heathdale Props, Mill Park, Cook, Hurst, Eustice, Shield, Colwell, Nadia Farms, McPiggery, Lake Hawdon, Dilemma Pastoral, Bennet, J.Gilbertson, Jamac, Toogood and Watson enterprises all helped to make this day one to remember. Time for bed.

RIDGWAY - LAMEROO SA

OFFERED 127 SOLD 111 AVERAGE \$1,587

TOP \$5,000 (POLL)

Yet another typical Ridgway sale where the rams looked terrific for growth and fibre quality with clients rolling up and competing furiously for the tops and a large contingent penned to give the commercial buyer plenty of scope for their investment.

Ten percent of the auction lineup were purchased by Classings clients who were all present on the day slightly down on other years yet nothing to do whatsoever with the quality of polls penned.

Glen Tilley - Kapunda SA offered great support securing five rippers including three bred by SuperSire L858. The first of the 858's clocked in at YWT 8.8 at a realistic \$1,400. Try these objective figures for the next: 17.9u 2.3sd 12.8cv & 0.0pf at YCFW 17, YFAT 0.1 for lot 26 at \$2,600. Two other framey hooers were bred by WP160, the first in lot 22 for \$2,300 and the second for \$1,400 further down the order.

Mount Boothby - Tintinara SA who added a bit of spice to the year's previous sale on their debut again bought well securing four to \$1,900. I liked a Ram Lamb Syn bred lot 44 with lustre plus for fibre and great frame at \$1,800.

Their second at lot 106 with great test figures only set the clan back \$1,900. An L858 son slotted into lot 91 was an easy pickup for great quality at \$1,700 at 17.2u 2.3 sd 13.4cv & 0.1pf. Some 858's rarely go cheap but at lot 117 for \$600...

We will have a good idea this year on how well the Ridgways have fared compared to three other sources of genetics in an internal trial run at the property of the Munro family at Tintinara managed by the capable **Aaron Freeman**.

He picked up a YWT 9.8 at MP+ 153, L858 bred ripper in lot 15 with lustre and one of the boldest crimped in the lineup selling for \$2,000. Next best was at lot 42 again for \$2,000 for a Ram Lamb Syn. bred beauty and a good cheapy at lot 36 for \$1,000 rounded off the group.

I bought **Broughton Vale - Little Topar NSW** a good R1137 son down at lot 68 for \$600 with a YCFW 19 and well made.

Garry Hansen - Coomoondook SA picked up a good handful including a great woolled WP160 bred lot 65 for \$1,700. Wanna see a great commercial flock? Ring me for guided tours!

Len Matthews-Bulgandri-Rand NSW outlaid \$5,000 for the toppy, a screamer of an animal purposely positioned in lot 2. Bred via semen from Kamora Park 1028 there was a three way battle for this guy including yours truly as well as the Sheriff/Martin partnership due to his stature and fibre and add a YCFW 23 & MP+ 160 & 112kg.



Len's lot 4 pickup for a stretchy Roemahkita Big Joe with YCFW 20 at 18.1u 2.4sd 13.3cv & 0.2 & MP+ 158 was possibly as good as the great lot 2 pickup.

Bulk honours worthy of mention was Craig and Josh Graham-Maitland SA who averaged nearly \$3,000 for their stash of seven good selections including lot 1 for \$4,200. Bred by R204 who in turn was bred by quality machine R422 he had YCFW 22 & MP+ 150. A YCFW 22 lot 3 bred by Leahcim 47 with a very square hindquarter for \$3,200 followed.

McPiggery-Lameroo SA, those collectors of great fibred crackers, did well here and picked up one of the best in the book mysteriously way down at lot 43 for \$4,000. We found out during the course of the morning that this guy was a reserve to be retained at the stud but a replacement ram was required for an injured poll at this pen number. Extreme fibre on a hulk I would be keen to see how this ram goes down the track. Their WP160 bred lot 28 was no disgrace either at \$2,800.

Anyone who buys thirteen rams deserves earlier mention than this! Lynton Barrett-Lameroo SA deserved all the beer he required post sale for such great support! I liked their lot 16 grab for a L858 with a 7 for growth and only \$1,000.

Maybe the absolute bargain of the day was the Sheriff/Martin-McLaren Vale SA pickup at lot 61 for a flukey \$1,800! A great allrounder visually backed up with the great numbers of YCFW 23, MP+ 159 at 16.8u and bred by KP1028, I also was caught napping!

Steven and Carolyn Paech-Callington SA were a great sight for the Ridgway clan securing six to \$1,600.

Brian Ratcliffe-Lameroo SA went for fleece weight in selecting two KP1028's. Lot 69 with a YCFW 22 was the squarest in the catalogue for \$1,600. His other interesting buy was lot 94 from the same sire for \$1,800. This ram had YCFW 27, the highest in the catalogue yet was on the edge for maybe too much productivity! I would like to view this bloke now in his second year as to his make-up.

I really liked the first of the Glen Hampel selections in lot 5. Big and square with a YCFW 21 & MP+ 156 with a great skin and staple length. Bred by KP1028 a renowned cutter this bloke was very safe.

Tim Philip-Maroon Vic. and Simon Brady-Rhymney Vic were good for seven between them and lent great support throughout.

Tim Freak-Coomoondook SA was good for four and the Brown, Lee, Hogg, Altus, Mark White, Brian Ratcliffe, Davis, Biggins enterprises couldn't be ignored for their enduring support.

AWN were a force as well with 12 purchases for three Victorian clients.



Our wise cat perusing incoming information as it comes to hand asked a very pertinent question.

Considering not many studs test for yield at the minute, how come everybody has YCFW ASBV's!

Whenever I have a query like this one there are some great people with most answers across the merino industry gambit. My response of course would have been very similar to this one naturally!! Thankyou Anne Ramsay!

"There is a high correlation between greasy and clean fleece weight (0.86) but it's not perfect.

Hence, there is value in testing animals for yield if they are going to have a big influence on genetic gain (like stud sires or flock rams for commercial producers) - and particularly if you are in an environment where yield is limited.

I did have a client that switched back to looking at GFW because they felt that they lost nourishment just focussing on CFW. It's a balancing act."

CLASSINGS CLASSIC '16

Incorporating
WORLD MERINO INSIGHT
MONDAY SEPTEMBER 5th 2016 AT 1.30pm
Murray Bridge Race Course S.A.

www.classings.com.au
Find Us On Facebook



ROEMAHKITA - CUMMINS SA

OFFERED 91 SOLD 77 AVERAGE \$1,756 TOP \$3,600 x 2 (POLL)

The 2015 Roemahkita sale started off as it always has with a bang with lots of competitive bidding for the extreme quality displayed.

Baines Brothers-Cummins SA retained their hero status from all years previous by competing big time on plenty to end up with six to a top of \$3,400. Their selection for fleece weight was obvious with most rams exhibiting all forms of density.

Arapunya Investments-Clare SA bought nine rams to \$2,800 including lot 37 at \$2,000 and bred by WP214. Support like this doesn't go unnoticed and I assume all involved enjoyed their Italian holiday sponsored by Roemahkita!

Chris Watson-Cummins SA has a great idea what's going on in Merino World and selected typically well purchasing four up to \$3,200. Possibly the pick was lot 13 bred by a Ridgway 85 bred syndicate for \$2,600.

Calbroma Enterprises, Ross Mickan and Tim Larwood-Kimba SA bought three each in the range of \$1,500-\$3400.

Calbroma's lot 10 purchase was a high ranker in my book and deserved the \$3,000 price tag. Bred by Roemahkita 1031, a son of Mernowie Escalator, this guy filled the pen and displayed great lustre of fibre.



Photo: Tracey Dahlitz

A few years back a ram of structure with objective tests of 17.1u 2.2sd 12.9cv 0.2pf at 116kg might have created a record price but I was lucky enough to snag him at \$2,400 for **Lucernbrae Poll-Callington SA** who left me an order for the best ram in the house! I also added two 'flockies' to the list for their commercial enterprise.

Lot 1's ram placement at cataloguing is always a toughy where you know that people are a bit sluggish and won't pay top bucks until the the sale starts to roll a bit once the general feel is established. Do you put in a screamer or a safe seller? My luck this day for Lucernbrae!

A rare Premier 102 sale ram in lot 3 didn't make the reserve of \$5,000 albeit the bidding concluded at \$4,750! The ram was much later sold privately at the asking reserve.

There were two top prices for the day at \$3,600. Trevor Voight-Minlaton SA secured a Roemahkita sired fella in lot 7 and I picked up the other for Tommy Freeth-Buckleboo SA for a WP Syndicate bred son with an actual EMD of 40. The backend squareness of this animal was exceptional and a big reason he was so popular.

I bought two consecutive lots 34 & 35 at \$1,400 & \$3,000 for **Rob Germein - Port Vincent SA** to add to his upcoming Leahcim purchases. The second bloke bred by a Kamora Netley Park intrusion with outstanding real figures of 19.7u 2.5sd 12.6cv & 0.0pf. stood very well with great fibre exhibited.

Maurice Collins-Mt. Torrens SA bought one of the best lots of the day for \$3,000 in lot 5 for a WP214 son. Elite fibre at it's best! He added the best spring drop to his pile in the second last pen for \$2,400 with figures of 16.6u 2.2sd & 13.1cv.

I bought a great lot 77, bred again by RO1031, for Critter and Bec Freeman-Penong SA. This flock is going like a rocket due to the realistic budget that Critter leaves with me every year as to 'collect' the best rams available from generally two studs.

The Cabot, Borthwick Estate, Dolphin, Berrymen, Fricke, Crosby, Lawrie and Sheehan enterprises were all present to ensure the success of the sale.

The 2016 lineup will lean toward a fleece weight emphasis due to recent infusions of highly ranked genetics swaying toward this trait.



Roemahkita
POLL MERINO STUD

Joe & Tracey Dahlitz

Cummins SA 5631 Joe : 0428 295 706

e: roemahkita@bigpond.com www.roemahkita.com.au

Thursday July 21st

Inspection Day Roemahkita 10.30am-4 pm

Tuesday JULY 26th, 2pm

26th On Property Ram Sale

90 quality poll merino rams 90

Sale Rams Averages:

Micron 19.2 SD 2.9 CV 15.0 CF% 99.6

Wool Cut 5.4, 6 mths wool HWT 99.2 kgs

AWTA Wool Figures and HWT at 24/6/2016

August 1st & 2nd

Hamilton Sheepvention, Display Team

Monday September 5th

Classings Classic Sale, Murray Bridge

TAG	MICRON	SD	CV	CF%
150003	19.1	2.5	13.1	99.8
150756	20.5	3.1	15.1	99.7
150216	17.8	2.9	16.3	99.7
150106	19.0	3.1	16.3	99.5

Friday September 9th

Adelaide Show Ram Sale

TAG	MICRON	SD	CV	CF%
150092	18.3	2.8	15.3	99.7
150338	18.3	3.0	16.4	99.8
150824	20.6	2.6	12.6	99.7

Private Selections available from August.

ALL PURPOSE GENETICS: ROEMAHKITA

plain bodies with density, easy care poll merinos

MEAT, MUSCLE & FIBRE

Contact Joe at any time 0428 295 706

ACTION JACKSON!

Jackson Adams had a stint with us a few years back after showing a lot of interest in our Sheepclassing arm of the business and a general interest in animal production and breeding. He travelled with me for a time and in doing so won the respect of most clients who had the pleasure in meeting him. Two of these had Jackson return to be an integral part of their enterprises in general farming but mostly in the area of stud merino breeding.



He just happens to be the son of our friends, Lee and Jane Adams, with Lee drumming with the notorious Mamboobies shitty rock cover band of which we are both making our millions from.

The following is an update on Jackson's progress which will appease many and take the pressure off of me from those who relentlessly ask me of his whereabouts! It's a great story and I'm rapt that he has chosen this path. Sheepclassing future Jackson?!!

"G'day, my name is Jackson Adams and I'm from Mannum, SA. In the past three to four years I have worked casually with Bill, getting a feel of what it is like to be a sheep classer and work within the Australian Sheep Industry. My passion for working with animals was initially established through this opportunity, and further developed through subsequent opportunities provided through working with Bill, ultimately providing me with clarity and guidance going forth in my career. For this I am extremely grateful, and would like to also make a special mention to Peter Wallis of Glenlea Park and Jono Ashby of Southrose and their families for all their help.

Just recently I have graduated from an Agricultural Science degree at the University of Adelaide where, unlike the majority of my colleagues, I focused on livestock by studying Animal Breeding, Animal Nutrition and Animal Health. Toward the end of my degree, these animal based subjects appealed to me more and, most importantly, aided in my choice to follow my passion for animals.

I have found this pathway to be highly beneficial, giving me a broad understanding of soil, water, plants as well as animal production. I would highly recommend this route to anyone who feels as though they are sitting on the fence between the livestock industry and agronomy.

Currently I am undertaking my Honours at the University of Adelaide in lamb survival under the supervision of Associate Professor Forbes Brien and Professor Wayne Pitchford. This is a part of a much larger national project funded by the Australian Wool Innovation and Meat & Livestock Australia, examining the effects of lambing mob size and stocking density in a bid to lift lamb survival and therefore weaning rates. Specifically, my project will include the collection and autopsy of deceased lambs in order to determine cause of death.

There are a number of characteristics that can be observed at autopsy to help assign a particular cause of death. These include, but are not limited to; inflation of the lungs, where if a piece of lung is placed in a bucket of water and floats, it has breathed, evidence of standing, where if the hoof of the lamb is darkened and reasonably hard/dirty as opposed to light coloured with a spongy texture, like a cat's paw, the lamb has walked.

Also the metabolism of brown fat reserves around the heart, lungs and kidneys, meaning it has been viable, such as maintaining body temperature, for quite some time.

Additionally, the presence of milk in the gut, meaning it has suckled from its mother and thus must have stood/walked and been able to respond to the guidance signals of the dam to find the teat. Haemorrhage and swelling of the brain/ central nervous system (CNS) suggesting birthing difficulties often referred to as dystocia and lastly, signs of primary predation such as severe bleeding from wounds, however this is inherently difficult to diagnose as the primary cause of death.

The most common cause of death is a complex known as the SME complex, which incorporates deaths attributed to **starvation, mis-mothering and exposure (SME)**, generally resulting from a lamb failing to feed. This leads me into my hypothesis, providing ties to the national project, that when mob size and stocking density are increased, the number of lambs born per day will be increased, providing a greater probability of mis-mothering and lamb stealing, resulting in a greater mortality rate, of which a greater proportion will be attributed to the SME complex following autopsy findings.

Additionally, through this project I have been able to be a part of the National Merino Challenge and Intercollegiate Meat Judging teams this year which have been a wonderful opportunity, taking me all over the country and meeting very interesting and like-minded people.

Here are a few questions from Bill regarding my project, followed with my answers.

What is the aim of the experiment and what do you hope to achieve?

The aim of this experiment is to determine whether mob size and stocking rate have a significant effect on the survival rates of lambs. We will be focussing on twin born lambs especially, considering we know that the establishment of a strong ewe-lamb bond is far more difficult in twin born lambs and,

thus, they are more prone to mismothering and lamb stealing. From this research we hope to get a better understanding around how stocking rate and mob size effects twin lamb survival, enabling us to provide justified guidelines around lambing ewes for producers to utilise.

How would you practically manage the farm in order to address the issue of twin lamb survival, providing there is a significant result obtained?

Providing we attain significant results the next step would be implementing it on farm. For example, if it turns out that as mob size and stocking rate decreases, there is a corresponding increase in lamb survival, (being our hypothesis) farmers wishing to adopt this into their lambing-ewe management would need to decrease their lambing paddock sizes by subdividing paddocks.

There are obvious initial investment costs associated with this such as internal fencing, watering points etc. To work out the profitability, these costs can be compared to the potential increase in gross returns from weaning more lambs per ewe, and being able to sell more surplus sheep, among other benefits.

However, at this stage, we are just aiming to provide more information on the effects of mob size and stocking rate on twin lamb survival, providing the potential for sheep producers to better optimise ewe stocking densities at lambing.

Have previous scientific investigations covered all bases in regards to lamb survival, or is there something missing, considering the National Weaning percentage still hovers around an absurd 80%!?

I can safely say, considering I struggled to keep my recent literature review on lamb survival below the 5000-word limit, all factors effecting lamb survival have at least been looked into, in one way or another at some point. We can thank the extensive work completed by George Alexander and company for this during the 80's and a lot of his, as well as other researcher's work has been confirmed by more recent studies. This suggests we can be confident with the conclusions drawn.

However, confusion does still remain around the effects of mob size and stocking rate on lamb survival, with very few studies being completed, and those that are published have contradicting results. This is why this experiment is the next logical step when looking to improve survival and weaning rates.

Although small but significant improvements have come from improved nutrition and management of lambing ewes, thanks to lifetime ewe management courses, future improvements, following the results of this study will come from efficient transfer of this research and technology to the people that it will benefit most, which is of course Australian farmers. A recent paper by Dwyer et al. 2016 covered this really well and I would recommend everyone interested to have a read:

Dwyer, CM, Conington, J, Corbiere, F, Holmøy, IH, Muri, K, Nowak, R, Rooke, J, Vipond, J, Gautier, JM (2016) Invited review: Improving neonatal survival in small ruminants: science into practice. 10, 449-459.

I attended a macabre autopsy day a few years ago not dissimilar to the human version on SBS a few years ago! It was fascinating to see the internal affects associated with SME. I think as part of your honours pitch, a Facebook 'Jacko's Autopsy Gig' would actually get the punters into understanding what they might rightly or wrongly be up to out in the paddock! (Naturally sponsored by Classings!) ie. Do you believe there are better ways of spreading the word of new information you may muster? More workshops etc.

Very true Bill I think there are a huge number of different opportunities for tech transfer, especially the rate social media is developing and expanding. With this project in particular, you will all start to see an increase in Facebook promotion, Field Days and Workshops over the rest of the year which I think will be critical if we are to make any significant impact on the industry.

Can you hit me with a few facts that surprised you within your studies that may be of new information to the everyday grower?

Something that comes to mind straight away, because I think it is a really good representation of how ideas come about and then research and development of these ideas provide greater understanding, is that of shearing just before lambing.

We know that shelter significantly increases lamb survival by reducing losses due to exposure from wind and rain. It was thought that we could further improve survival by shearing close to lambing, encouraging the ewes to seek shelter when lambing.

However, it was shown that when shearing close to lambing, ewes did not necessarily seek shelter when lambing and it in fact reduced lamb survival during a poor weather event as ewes were more inclined to leave their new born lambs in order to seek shelter for themselves. There was also an increased incidence of pregnancy toxemia and ultimately this has not been adopted.

I am absolutely loving what I have learnt so far during Honours, and I look forward to what is still to come, especially the findings of my research. Looking beyond this year, I cannot wait to get out and amongst the industry, implementing the skills I've learned to help continuously improve management systems, resulting in improved welfare and production.

Thanks once again to all those that have influenced me throughout my journey, and stay posted for my findings!"

Cheers, Jackson

CLASSINGS CLASSIC '16

Incorporating
WORLD MERINO INSIGHT
MONDAY SEPTEMBER 5th 2016 AT 1.30pm
Murray Bridge Race Course S.A.

www.classings.com.au
Find Us On Facebook

KAMORA PARK - KAROONDA SA

OFFERED 183 SOLD 146 AVERAGE \$1,370 TOP \$5,600 (POLL)

I had to leave the Kamora Park sale early on the day so without a fully completed catalogue Ian Turner's report would be a better read than my half baked effort! I thank him and the SJ for its use.

and Wade Boughen to ensure all budgets were catered for.

Overall 146 rams sold to a top of \$5600 and averaged \$1370, which included 128 in the main auction averaging \$1488. The Boughen's desire to present affordable rams was achieved, with 42% selling from \$400 to \$1000.

Separating the bidding were Landmark auctioneers Gordon Wood, Richard Miller and Murray Bullen, with rapid fire action at the beginning, but as budgets were filled, buyers became more selective as the sale went on.

The buying commenced with John and Paul Wegner, Wegner Brothers, Karoonda

picking up lot 1, KP131 for \$3000. They continued their strong bidding throughout the sale, including KP714 for \$3800 and averaged \$1650 in purchasing 22 rams overall. They are regularly the biggest volume purchasers at the Kamora Park sales.

The \$5600 top price this year was successfully bid by Steen Paech, bidding for Bruce and Shirley Willison, Mt Pleasant. They paid this for lot 3, KP500, sired by KP522. On top of a well-balanced big frame, the ram had a 20.3 micron, 2.7 SD, 13.3 CV and 99.5 comfort factor fleece, also being +6.6 for yearling weight and had a dual purpose index of 146.

Both underbidders came to buy this ram with one also underbidder on the second top ram, KP1214 that went for \$4400 to CS & GD Schubert from Murray Bridge, one of three top rams they purchased at a \$3000 average.

Three rams sold at \$3800, the one to Wegner Brothers, one to Inglebrae Holdings, Callington and one to JP & C Hein, Murray Bridge.

Andrew Wall, Wall & Neindorf, Langdoon Station via Broken Hill is a regular big volume buyer at Kamora Park. This year he purchased 17 rams, paying to \$900 and at an exceptional value \$668 average. This was made up with 11 from the main auction and six from the mini auction including one at \$900, the top for that section of the sale.

The other buyer to purchase double figure numbers was LD & S Stasinowsky & Co, Mantung. They paid to \$1400 twice and averaged \$970 for 10 rams.

Ian Symonds, Why Gee Pastoral, Karoonda was a solid bidder throughout on select lots and purchased six rams, paying to \$2000 twice, and averaged \$1600.

Scott Dinham, Tailem Bend was very strong on the top lots he selected, purchasing five and twice paying to a \$3000 top, while averaging out his purchases at \$2700.

Other prominent buyers included MH & NE Falting & Sons, Loxton (six rams to \$1700 and average \$1350), Brad Champness, through Fox, Lillie Rural, Melton, Vic (five to \$1800 and average \$1460), JK Pfitzner, Wanbi (five to \$1200 and average \$860) and Ray Kowald, Kevradale Pastoral Co, Tailem Bend (six high value rams to \$850 and average \$550)."



"A magnificent line-up of 183 Poll Merinos greeted the crowd that included 38 registered bidders at the Kamora Park Poll Merino ram sale last August. The rams were very well grown despite a less than ideal season, displaying elite quality wools, and as expected at Kamora Park, exceptional carcasses.

These dual purpose characteristics were certainly appreciated by the buyers present who bid up strongly, and while the top price was down \$1800 on the 2014 sale, the average was up \$198. The numbers on offer were in excess of buyer requirements, a deliberate action by the vendors, Colin, Julie, Katelyn

Kamora Park Poll Merino Stud

**Functional, long, deep & robust sheep
with substance - suitable for all markets**
★ Dual purpose selection since 1963



Enquiries always welcome: Colin, Julie, Wade & Katelyn Boughen,
Kamora Park: Ph (08) 8578 3456 Mob: 0434 051 686

◆ Recognised in classes assessing both
wool and meat attributes at Adelaide

▶ RAS Fibre Meat class: Kamora Park has been the most
successful stud in the history of this important class.

✦ Inspection Invited ✦

◆ See our sheep on display at
Bendigo, Keith & Murray Bridge (July); Adelaide (Sept)

✦ Your Chance to Purchase ✦

Offering 2 top rams at Classings Classic on Sept 5th

◆ Annual On-Property Auction - Sandalwood

Friday 5th August 2016 11am

◆ approx 180 rams ◆

CALCOOKARA

OFFERED 76 SOLD 76 AVERAGE \$1,232 TOP \$3,600 (POLL)



Take a close look at these numbers of which Liam McInerney of Maroona - Keith SA relayed on to me during a very successful classing day on June 22nd. Their 2015 weaning percentage including dry ewes was 119%. 1821 lambs were marked from 1,518 ewes mated. Of these 1,801 lambs were shorn (ie. survived post weaning!)

Considering the national weaning percentage is only a tad over 80% that extra 39% of lambs to class, join, shear and sell adds up to a lot of extra bucks to influence future successful breeding programs or throw in a break to Italy!

The commercial Maroona flock is of high quality due in part to their involvement with Superior Wool Syndicate where they have accessed top genetics to influence large AI programs as to exhibit stock of great density, wool quality and body weight.

Due to a doubling up of two of our client's sale dates I had to draw straws and unfortunately was unable to attend the very successful Calcookara sale.

The following is Janelle Cozzi's effort to capture the sale highlights and I thank the **Stock Journal** for its use.

"HISTORY repeated itself at Calcookara stud's annual ram auction at Cowell on Friday last week, where once again a son of Leachim 858 made the top price, at \$3600. The Smith family enjoyed total sale and post-sale clearance of 76 poll and horned Merinos for a \$50 jump in the average price.

Brenton and Jane Smith's true-to-type rams were in strong demand, with all 62 Poll Merinos sold to the \$3600 top for an average of \$1312.

The Merino offering was just as commanding, 14 from 14 at an average of \$878 to a top of \$2300.

The Smiths' emphasis on clip improvement was evident in the April-shorn sires' impressive fibre figures, with the sales team averaging 19.2 micron and 99.4 per cent comfort factor.

Interstate breeders led the buying charge, with Ian and Di Haggarty, Prospect Thoroughbred Pastoral, WA, through Elders Wyalkatchem, WA, paying the top price. The 100-kilogram poll carried a free-growing, plush fleece measuring 99.4CF, 19.2M, 16.7 coefficient of variation and 3.2 standard deviation.

Elders Cowell's Lachie McAllister, who represented the Haggartys at auction, said the ram exhibited the dual meat and wool qualities that the industry demanded. "He's got that lovely bright, white wool, which is matched by his appearance - he's got a big, upstanding frame and is going to grow into a big, thumping ram," he said.



Three of the four top-price rams were progeny of Leachim 858, including the second top-price ram at \$3000. The 85kg poll, measuring 18.1M, 99.8CF, 16CV and 2.9SD was one of five bought by Foster & Waller, Port Lincoln.

Rod Hannemann, Mangalo, who has been buying from Calcookara for a decade, secured the top-price Merino at \$2300. Mr Smith said most of Mr Hannemann's wool went

into the A3 auction line and his Merino topper would continue this tradition.

The 93kg elite fibre-type carried a fine fleece of 17.9M, 100CF, 13.4CV and 2.4SD. Mr Smith likened him to his poll counterpart. "He's a big, plain animal, with really good wool figures, he said.

Many buyers filled larger orders than previous years and he was delighted that his stock offered quality and good value for all ends of the market. NV&EJ Byerlee, Orroroo, were volume buyers, taking eight to \$2000 and Cooyerdoo Station, Port Augusta took three at auction, one poll and two horned to \$800 and 10 more post-auction."

CALCOOKARA

MERINO



POLL MERINO



Annual On Property Ram Sale Thursday 25th August 2016

Inspection from 11.30am,

Auction at 1.30pm

Open Inspection Day Friday 19th August 1pm-4pm

- Auction team paddock run with current tests
- Brucellosis free and vaccinating for OJD for 12 years
- Ewe flock currently sitting at 18.8 micron average

Brenton: (08) 8628 5039

Mobile: 0427 285 039

Email: info@calcookara.com.au

Website: calcookara.com.au

VR2377069



CLASSINGS CLASSIC QUOTES AND ONE LINERS...

"The top price ram, lot 1, born in May 2014 had fleece measurements of **22.9u 5.2sd & 22.7!**" stud x

"Dear Mr. Richard Harkness,
We are businessmen from Uzbekistan, and we want to breed merino with best wool. Does your company is interested in selling us a flock of merino? Looking forward to cooperate with you, Best regards, M.B.A. Rustambek Mansurov"

"The second ram was born in September, had an 18 micron fleece, 14.4cv 2.6sd **and weighed 99kg** at birth." SOHNIC SALE REPORT VIC

"Regrettably the average conception rate to AI was 30% - By all accounts this is a most unusual result!!"

My missus packed my bags
and as I walked out of the
front door she screamed, "I
wish you a slow and painful
death you bastard."
"Oh," I replied, "so now you
want me to fucking stay."

"Hi Bill, canst du send me da
wool pic und die ram foto ya,
bitta. Danka-shirn, Hansi."
Happy Barossa client!

"There has never been a
better time to be part of
the SA Sheep Industry."
Joe Keynes-Livestock SA-
Blueprint Launch.

"80% of Australia's red meat is exported." Richard Norton MLA

"We have a vibrant and productive Wool Industry.....(productive as in) return in investment and reward the young." Paul Swan AWI

"If adult ewe numbers remain low our ability to grow industry wealth means growing more productivity per ewe within a per hectare context. Lambs reared and fleece weight is of prime importance." Paul Swan AWI

"There is no future for 15-16 micron wool." Steven Read-Michell Wool

"There is no focus on ultra fine wool. It is regarded as the poor man's cashmere." Steven Read-Michell Wool

"Every sheep is an employee of the business." Ken Solly Business Services

"The sheep Industry is the only commodity that has grown ahead of inflation in the past decade." BLUEPRINT SA

"Hey! Laproscopic A.I. in South America achieved 80% conception (with sheep) thrown over the rail in the yards! Answer that one?" TC

"It (Cullings'15) has pride of place in the loo - and gets read from cover to cover throughout the year." S.E.

"On the postive side for AI, it is still the most risk averse way of using the best rams in the industry that could potentially have a big impact on your flock. In the past 12 months I have done AI to rams with a combined sale valued of well over \$100,000 and if I don't like the progeny from any of them I have spent a small fraction of that to find out. If I had purchased those rams the financial implications are far more severe." P.W.

"Each year, millions of lambs are subjected to "mulesing" — a crude mutilation in which sheep have huge chunks of skin and flesh cut from their backsides without any pain relief...." PETA WEBSITE

".....y'know that Classic sale of yours will turn into a beauty one day!" S.A. Stock Agent - Mallee

CLASSINGS CLASSIC'16: GUNALLO

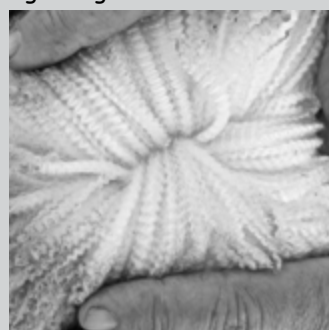


Gunallo manages to pull one out of the bag every year with 'Pride' and 'Lustre' doing well with the fund raising stakes in the past. Gunallo 460 is this year's model aptly named 'Sir Cumference' specifically due to his great girth and a back end of tram like proportions! He will be lot one at Classic'16 due to the stud's great success in 2015.

Great real time figures of 19.4u 2.7sd 13.9cv 0.1pf compounded with ASBV's including YWT 7.8 YCFW 20.0 & MP+ 159.

His fibre type as pictured is all that we have come to expect from Gunallo and Classic sales over the years

where this gear exhibits jaw dropping lustre, bold crimp and fluid nourishment capped with polar whiteness!





CLASSIC'16: LUCERNBRAE

Huge lambing percentages, exotic fibre and excellent stretch of body exemplify the Lucernbrae stock.

Classing included identifying this hooter from the young rams that will lead the team at Classic'16. Lucernbrae 1934 is Syndicate bred with GFW 115% and resembles a tram!



CLASSIC'16: RIDGWAY

The excellent Classic'16 team from Ridgway SA may be led by Ridgway 150-609 (That big bugger at centre photo) A super framed poll exhibiting bold crimp, whiteness and staple length. 609 boasts within flock GFW of 140% & 18.6u, 3.0sd, 16.1cv & 0.5pf. They had a good Classic'15 but I think this year's team may just have the edge!

O'BRIEN POLL - KYANCUTTA SA

OFFERED 45 SOLD 45 AVERAGE \$1,105 TOP \$3,500 (POLL)

I need to get the O'Brien sale as the quality of this place is right up there due to great sire purchases over the years in tandem with smart choices of semen used from proven sires.

The following is a summary sent to me from Darren and Jodie O'Brien on how the day transpired.

O'Brien Poll and Dohne Merino offered 45 Dohne Merino and 45 Poll Merino rams on the 5th August 2015, with a sale average of \$1015.

The top price poll in lot 56, aged 14 months, weighing 109kg, 21u, 3.0sd, 14.0cv 0.6pf and YEMD 0.9 made \$3500, sired by Ridgway Advance 120726, and was purchased by Kappacoola Park from Kyancutta-SA who took a total of five rams.

They also bought lot 50 (first in the O'Brien merino lineup) for \$2,800. Bred by Supersire GP 395 he had YWT 7.0 & YEMD 0.7 at 19.5u and 118kg! They added lot 63 to the list for \$2,000 with one of the highest MP+ @ 140.

Other buyers included Tomney Brothers from Chandada SA purchasing six rams to \$2600, the brothers are good shearers and were looking for good combing, long staple length sheep without compromising wool cut. The \$2,600 fella was in pen 52 and was a pick of mine due to excellent fibre quality and density.

DS & SK Hoare from Kopi SA took 4 to \$1000 and Wombi Enterprises-Mt Hope SA was back at the sale and paid \$2300 for another 120726 son at lot 74. He was bred by R/Advance 120726 who was purchased by the O'Briens at Classic'13.

A very good GP395, was bought by DK Murphy in pen 55 that we all held in high regard. MP+ 145 (Highest in the catalogue) An easy care light head and fibre exotica the \$2,000 price tag was super realistic for the quality apparent.

Kenny Pastoral Elliston bought four at \$500 with Dishy McKenna topping up with 3 at \$500 the same amount Penna Bros also purchasing three.

Bruce Heddle - Minnipa SA dropped by and picked up two of the best for not a hell of a lot! Great, great wools and frames that easily could have slotted into the Classic sale, he picked them both up for 'robbery' pricing at \$800 & \$500!! The first bred by RA 110453 who was bought by Darren at Classic'12 for \$10,500, top price for the day.)

Watch this space as this stud is on the rise and appreciated by many with their honest approach to breeding some of the best polls on the 'Coast.

The Dohne's only just kept pace with the Poll Merino with the top price ram going to the Eagle Ridge and Hillview Studs for \$3500.



Here's an interesting one for you! In my opinion lot 59 was one of three best in the lineup and had he not made the Wudinna sale shed and Darren was keen, I wanted him for the Classic'15 sale. Fail!!

I'm glad he made reasonable dough at the O'Brien auction and sold to the Tomney's for \$2,100. Bred by that SuperSire GP395 with YCFW 15.9 & 18.1u.

CLASSINGS CLASSIC '16

Incorporating
WORLD MERINO INSIGHT
MONDAY SEPTEMBER 5th 2016 AT 1.30pm
Murray Bridge Race Course S.A.

www.classings.com.au
Find Us On Facebook

LORELMO/KEYNETON - KEYNETON SA

OFFERED 38 SOLD 30 AVERAGE \$1,053 TOP \$2,800 (POLL)



Lorelmo Keyneton Station is now in transitional mode, only slightly realigning the stud toward an earlier maturing poll of higher density and frame.

Selling the thirty from 38 offered can only be expanded and I believe the 2016 offering will surprise many at just how quickly the gains have been made. Quality figures were displayed from one of only two genuine fine wool studs in the state - the sale team average of 17.3 & 2.8sd should give you some idea.

Bruce and Jenny Cleland-Penneshaw SA battled slightly to pickup the pick ram of the day for \$2,800 at lot 3. Bred by a son of the famous 'Colt' the ram had all the makings of the top seller including YEMD 0.6. The Clelands went on to buy another at \$1,400 for a son of 'Chevy 327' who's progeny was nearly half of the Lorelmo catalogue.

'Chevy' also produced another great in lot 9 that was snapped up by Helen McDonald-Naracoorte SA without her great father Malcolm in tow this year. At \$2,000 I considered him a bargain as he would have suited any stud enterprise. Another from the same sire at lot 17 for \$1,700 also took Helen's eye at YFD -1.5.

I bought six for the great Andre family at Kangaroo Inn SA who have one of the great

fine wool flocks in the state. Two of these were from 'Chevy' with another two a direct cross from a top sire from Lorelmo NSW. I averaged just over \$1,200 for the group which was over realistic for such quality.

Bill Evans-Keyneton SA chipped in for two and Hartland Farm for a single.

The Keynes's bought around twenty ram lambs from the Southrose Dispersal sale from the year previous. Some reserves were kept to bolster the Lorelmo Keyneton stud with the surplus fifteen making the auction under the Southrose umbrella.

Andrew Mitchell-Mintaro SA bought two for \$1,600 & \$700. The first a L858 son with YCFW 19.4 & YWT 7.2.

Mt. Beevor-Harrogate SA were in for a couple at \$800 with Hartland Farm taking the first Southrose on offer at \$1,000.

I bought Netallie NSW and Aston Station NSW three between them at around a \$700 average - these rams to bolster already secured purchases from a variety of studs to make sure that their individual consignments were made up of the genuine article. Not to be confused with the horror 'station order' consignments purchased from one stud only regularly sent to the bush that should have been TFI meat products at best!

There's a lot left in the tank at Lorelmo Keyneton thanks to an energetic Keynes family outfit eager to create a stud that suits grower's demands in the current climate of meat and fibre. The fibre side is easily some of the highest quality the Classings Lab encounters - something that will never be erased in the pursuit of a genuine dual purpose animal.



LOVE MERINO
LOVE LORELMO

On-Property Sale
Monday 29th August, 2016
1pm - inspection from 10.30am

*Silky white wool designed for easy care
high rainfall environments.*



Please contact us for further information
Joe, Graham & Georgie Keynes
Phone: 08 8564 8235 | 0428 648 235
Email: merino@lorelmoks.com.au
1057 Stott Highway, Keyneton, South Australia

www.lorelmokeynetonstation.com.au



DORPER TERROR!

Reading the Stock Journal a couple of weeks ago it concerned me that a station had a full flock dispersal to replace merinos with dorpers.

Now everyone is entitled to their opinion on which the best flock options for them. My concern is that people get caught up in the spin and don't look at the financial costs or benefits of each enterprise. Let us compare merinos weaning at 80% and Dorpers weaning at 150%.

I have used 100 ewes as the base. Assuming 6kg per head of wool for each ewe at 800 cents per kilogram. Lambs shorn once at 6 months cutting 2 kg of wool at 700 cents per kg. Taken 10 dollars off per head for shearing costs, this includes backlining, superannuation, meals and other sundries.

I have aimed at 20kg per head dressed weight for each breed of wether lambs with the dorper receiving a 30 cent bump in price over the merino.

I have calculated that 30 ewes each year would be replaced from the original 100, with surplus ewe hoggets/lambs sold.

So with these rough calculations if you wean 80% merino lambs through out your flock. You would need to wean 150% lambs with a dorper flock of which despite the spin they don't reach this level. I do not take into consideration that some dorper flock still need to be shorn - if you can find them!

Yes Dorpers do carry lice and get fly struck, so the best operators within this industry shear and backline their flock annually.

So when thinking about change get a bit of paper out and do the sums. Sometimes the spin just doesn't add up.

Chris Prime - Nantoura Poll SA

NON WOOL BREEDS 150 % WEANING

	Number	KG	\$/KG		
Ewes	100				
Lamb Sales (wethers)	75	20	\$4.50	\$90.00	\$6,750.00
Surplus Ewe Hgts Sale	45			\$130.00	\$5,850.00
Surplus Ewe Sales	30			\$80.00	\$2,400.00
					\$15,000.00

MERINO EWES 80% WEANING

SHEARING	Number	KG	\$/KG	\$/HD	
Ewes	100	6	\$8.00	\$48.00	\$4,800.00
Lambs (6 months)	80	2	\$7.00	\$14.00	\$1,120.00
shearing costs	180	-1	\$10.00	-\$10.00	-\$1,800.00
Shearing Profit				\$52.00	\$4,120.00
		KG	\$/KG		
Lamb Sales (wethers)	40	20	\$4.20	\$84.00	\$3,360.00
Surplus Ewe Hgts Sale	10			\$130.00	\$1,300.00
Surplus Ewe Sales	30			\$80.00	\$2,400.00
					\$15,300.00



CLASSIC'16: RIDGWAY ADVANCE

Devon Ridgway holds June drop, Blue 003, ET Bred and sired by RA 080 'will-I-am' boasting figures of 18.7u, 2.5sd, 13.4cv & 0.2cf. The fibre and carcass exhibit all the great attributes that put Ridgway Advance and Classic sales in the spotlight in the first place.

I have no doubt this is the best team David, Karen and Devon have ever fielded at any Classic sale - 003 is one of many screamers!



LONE GUM

OFFERED 40 SOLD 35 AVERAGE \$1,170 TOP \$4,000 (POLL)

"Stuart and Nancy welcome you to our sale and thank you for your support over the last 49 years."

This was the studs last official on property auction with a lower keyed helmsman auction to take precedence from now on. Same quality, same place at the same time of year but less promotion and hoo hah!



Stuart is well aware that ASBV's are essential for future breeding and direction of the industry yet the time in collecting and recording data he believes is too taxing and time consuming for him to do things properly thus another reason to scale back.

As per the norm, the Lone Gum lineup for the 2015 sale was extraordinary and I regularly ponder to think just how well this stud could reach had they had more exposure over the years.

Top sale honours went to the very first lot selling to the Baker family's Mambray Creek commercial enterprise for the best poll of the day for \$4,000. Bred by a Leahcim ram (L1) Stuart Everett had purchased two years previous. I had this ram high on the list to purchase for a West Coast client but ran out of budget! A great carcass, fibre and personality (see photo) he was arguably the best poll Lone Gum has ever bred. 19.0u 3.1sd & 0.2pf.

Butch and Jodie Dunn-Penong SA who have always been solid purchasers of Lone Gum genetics supported well again with five pickups including the top horny for \$2,600. This bloke was bred by WP PPL 194 a sire that filled 20% of the catalogue with lustre and frame. 18.8u 3.0sd & 0.2pf added to the ram's outstanding dimensions.

Craig Rule - Wirrulla SA secured lot 2 for \$2,400, another pen filler bred by L1 and was placed high up in the sale lineup for obvious

reasons. He added lot 5 at \$1,100 for a big bold crimper with loads of density hence a 3.3sd at 20.5u.

The Pym family from Rockleigh SA bought two great fibred polls and both from the L1 sire at \$1,500 & \$1,100.

The Pympton commercial flock is a joy to class where the results of 'new' infusions from Lone Gum and a couple of other progressive studs has turned the joint upside down!

My station order rant continues where at the Lone Gum sale it was easy to secure four rams for Wilkatana Station-Port Augusta SA and average \$750 as well as another five for Netallie Station-Wilcannia NSW at \$800 average. Over the ensuing months in 2015 I was able to form great teams to send up to the bush of outstanding stock selected from over ten studs. This quality level can only be maintained by selecting this way as it is impossible to maintain when in search of 30 or so rams. Stations need top quality as much as the 'insiders.'

If it wasn't for reporting on client's purchases first this bloke would have headlined the page! John Franks-Port Pirie SA bought six over the sale up to \$1,600 and added great competition to the sale.

Neville Simpson-Wudinna SA bought three including a ripper, bold crimping lot 6 for a mere \$1,100 at 19.9u & 2.9sd bred by another Leahcim sire.

Paul Beyer-Port Pirie and Braden Battersby bought five between them also adding vital competition to the sale.

I would personally like to congratulate Stuart and Nancy for their persistence and quality of stock. I noticed the 49 years worth of stud sales which also suggests just how long our association has been with my father Don classing Stuart's father Bob's flock way back in the 60's.

On a sadder note, Mrs Everett passed away this year - we have all missed her presence in the last few years of Lone Gum sales in particular her warm greetings and well.. those cream puffs she used to make...dazzling!



On-Property 'Helmsman' selection sale
Monday, September 12th, 2016 at 1pm - Crystal Brook, SA

Sires in use bred by: Leahcim, Wallaloo Park and Gunallo

Stuart Everett: 0427 362 801

Classer - Bill Walker: 0428 973 804

FLAIRDALE - COOKE PLAINS SA

OFFERED 69 SOLD 50 AVERAGE \$1,534

TOP \$5,400 (POLL)

Despite the quality of the Flairdale rams constantly on the move in the right direction since the stud started to operate from it's new base at Cooke Plains, the uptake of new clients from the area has been a bit slow.

To pass in a few yet average \$1,534 to a top of \$5,000 and average around \$3,500 for the first ten in the catalogue, things are going right albeit just a couple of extra clients needed.

Lot 1 set the pace early going for \$4,800 for a big, YWT 9.3, GFW% 128, 118kg square L627 son, with the ever supportive Buchanans-Karoonda SA the new owners.

Top price for the day was in lot 5 and AI bred by that SuperSire L858 who pops up regularly throughout this newsletter, at \$5,400. 20.4u, 2.7sd 13.2cv as well as GFW 132%, YWT 10.3, YCFW 15.8 added to the attraction. The proud owner was Jeff Burgess-Gulnare SA who went on to buy two more at \$3,300 & \$3,300 bred by Flairdale sires.

Dale Paxton-Parndana KI impressed early with his support starting off with an L858 in lot 4 at \$2,600 at GFW 123%, lots 6 & 7 for \$2,400 & \$2,600 and two more later in the sale.

Trevor Laskey-Orroroo SA was a front pager with his first at lot 2 for \$4,200 at GFW 135% at 131kg (!), lot 8 also at \$4,200 and GFW 117% and later

an 858 son for \$1,600.

Peter Battersby-Orroroo SA was great bulk support with his six ram haul to average around \$700. He nabbed a good L858 son at lot 37 at 17.9u 2.6sd & 0.0pf for \$900.

Murray Bridge supporters, Darryl and Bev Frahn who topped the whole shibang in 2014 came close again with their impressive purchase in lot 9 for \$4,600.

Bred by Flairdale 003 this thug with outstanding fibre was popular with the Frahns taking line honours after a interesting bidding battle. GFW 122% & YFAT .07 at 20.5u & 12.7cv there were a lot of reasons for his popularity.

Wayne's favourite cousin John Lehmann should receive a Christmas present for Wayne for his valued support taking home seven for the day including a good Flairdale 003 son in lot

55 at 16.5u @ 2.8sd.

I don't know the Clarke family from Gorung Gorung in Victoria but their support was appreciated with their three purchases around the \$700 average.

The Heinrich, Allan, Crouch, Loechel, Steph Booker Jones, Kevradale, Kleinig families and Pitlochery were all present for there ones or two's completing a fairly handy sale for the Lehmann crew.



CLASSIC'16: GLENLEA PARK

Always a proponent of exploring and experimenting in small steps, Peter Wallis-Glenlea Park SA bought a Poll Boonoke ram PB 3.0040, On Property three years ago.

With an unfortunate casual drop as far as numbers were concerned, at least this impressive bloke, 150411, luckily popped up with current figures of 18.6u, 3.5sd, 18.8cv & 0.3pf.



Great back end with fibre density this guy will grace and possibly lead the Classic'16 Glenlea Park team.



FLAIRDALE
POLL MERINOS

ON-PROPERTY SALE

19TH SEPTEMBER 2016
1.30PM - 70 RAMS

Inspection from 10.30am

Private inspections available anytime on request

OFFERING 2016

Hamilton
5 RAMS 1st-2nd Aug

Classings Classic
5th September

Adelaide Ram Sale
9th September

Flairdale
19th September

Flock rams
available by
appointment
post sale

WAYNE LEHMANN
Phone: 0408 896 877

MATT LEHMANN
Phone: 0417 843 063

Email: flairdale@internode.on.net
www.flairdale.com

FIELD DAY 2016

THURSDAY 22nd SEPTEMBER
10am - 4pm



OVER 700 RAMS ON DISPLAY



Studs

- Old Dundee • Charinga
- Banavie • Gowandale
- Belbourie • Oakbank
 - Forest Springs
 - Sohnic Merinos
 - Wallaloo Park



MARNOO PUB

Please join us after the inspection field day for happy hour and savouries at the Marnoo Hotel from 5pm - 6.30pm



www.shelleybakdesign.com

PRES. TIM POLKINGHORNE 0427 317 846
SEC. SCOTT NICHOLSON 0438 086 403

NANTOURA - WHARMINDA SA

OFFERED 57 SOLD 51 AVERAGE \$1,582 TOP \$2,800 (POLL)

Yet again my plans of attending the Nantoura sale were dashed with classing commitments putting me somewhere else in the state. The following is Janelle Cozzi's account of the day and I thank the Stock Journal for allowing a repeat.

WITH 18 rams making more than \$2000, including the top buy at \$2800, Nantoura Poll Merinosa achieved a record average at the stud's eighth annual on-property ram sale on Tuesday last week.

There were 24 registered bidders at the auction of non-mulesed rams at the Wharminda property, with keen interest driving the sale team average to \$1582 - an increase of \$254 from 2014.

Three rams made the \$2600 second top-price, while five went to \$2400 and three more to \$2200.

Graeme Christian, Gum Flat, had the deepest pockets, taking a Pimbena-sired ram to the \$2800 top.

"He's an outstanding ram, with great growth rate, and an above-average wool cut," Nantoura stud principal Chris Prime said.

The 101-kilogram sale topper was carrying a quality fleece measuring 17 microns, 3.1 standard deviation, 18.3 coefficient variation and 100 per cent comfort factor, and ranked in the top 10pc of the draft.

Buying on behalf of John and Theresa Flavell, Gum Flat, through Elders Cleve, Mr Christian

said the paddock-run ram was well suited to conditions on his family's property in the foothills of Cleve.

"These rams are bred on very similar country to where our farm is, so in terms of geography, they're already acclimatised," he said.

The Flavells, who have been buying Nantoura rams at auction for six years, bought three rams, including one of the second top-price sires at \$2600.

The other two \$2600 lots went to Paul Jones, Bengor Props., Melrose.

Pfitzer Farming, Butler Tanks, has been sourcing Nantoura genetics for 30 years and

filled the largest order, taking six to \$2200.

Mr Prime said he was pleased to offer high-quality stock for all market segments.

"The first 20 lots sold averaged \$2005, and we had 30pc go for \$1000 or less, so there was still good value buying," he said.

He said the auction trend mirrored market forces, with heavier wool-cutters dominating top-end buying.



Take A closer Look at our Rams

Nantoura Poll Merino Stud

offering

60 Poll Merino Rams 60

30th August

1:30 pm

All rams with

ASBVs and current wool tests



Contact - Chris Prime Ph (08)86880015 or 0427289021

RAMSGATE - TINTINARA SA

OFFERED 66 SOLD 53 AVERAGE \$1,086 TOP \$2,400 (POLL)

Considering four of the best Ramsgate's ever bred went to Classic '15 and fared very well this sale had a good feel despite the absence of some 'loyals' who hopefully will be back in 2016.

The keen eyed and full of wisdom mayor of Brinkley, Dean Pearson, knows that some early lots don't sell as well as they could with a pensive crowd at times taking awhile to settle into the day's proceedings.

He snavelled lot 1 for \$1,700 and lot 2 for \$1,900 and nearly got his dial in the SJ for his pounce! The first, a Ridgway Advance 350 son was a pen filler at 115kg with nourishment and density. The second a KP17 son with great butt shape and fibre.

Sale topping credit though went to Geoff and Sue Zacker-Coonalpyn SA who weren't going to stop until lot 6 was safely in their grasp! Another RA350 ripper, the \$2,400 top price exhibited all of the things we enjoy about the merino - 19.6u 2.6sd 13.5cv & 0.2pf for starters. Add to this 121% GFW and 111kg body weight and there's the winner!

Mount Boothby-Culburra SA started their collection early at lot 5 for a GP395 (Classic '13 \$51,000 sale topper - Ramsgate in semen share) at \$1,600. Good at GFW 112% & 102kg. Same sire, same look at lot 15 with GFW 114% for not enough loot and again at lot 53 for \$1,500.

In all the Johnsons picked up five corksers to add to their selections from other studs where bang for buck is imperative considering the amount they require.

Keilira Station near Kingston S.E. are a welcoming sight to any ram sale. Shane Rooke and great side kick Steph Booker-Jones picked up a casual twelve (!) to bolster the sale and kept everyone on their toes.

They picked up two WP201 sons early for \$1,000 and \$900, a RA350 son at a group top of \$1,500 and maybe the best from this sire at lot 29 for \$1,100. Would be keen to find out how their lot 47 (fibre) & 41 (meat!) Leahcim 1545 bred pickups are looking now as they were ill catalogued (by me) considering their presence on the day!

Josh Keller bought lot 10 for \$1,800 for a meaty thug and RA350 bred at 112kg with similar proportions to Rick Davies! His KP17 bred thumper purchase in pen 40 at \$1,500 was a perfect match.

Anthony Foster-Bull Lagoon SA marched on again and bought five and competed on many more. His first, a GP395 goody for \$1,500 with GFW 121% at 108kg started the ball rolling but I think his great pickup at lot 25 for another GP395 took the cake! Great fibre, good carcass at GFW 121% & a 112kg lump of lead he was hard to beat at this section of the sale.

The DePledge, Guthrie, Norman, Windella, Thomas, Duell and Vowels enterprises picked up their two's and three's adding to the day's competition.

I bought another seven to add to my pastoral orders of Netallie, Aston and Broughton Vale all in NSW.

The quality of these station selections at around \$700 average is fantastic and reflects well within these great flocks.

CLASSINGS CLASSIC '16

Incorporating
WORLD MERINO INSIGHT
MONDAY SEPTEMBER 5th 2016 AT 1.30pm
Murray Bridge Race Course S.A.

www.classings.com.au
Find Us On Facebook



RAMSGATE
POLL MERINO STUD
TINTINARA SA

Displaying
SE Merino Field Day Keith
Karoonda Merino Field Day Murray Bridge
Hamilton Sheepvention
Selling Classings Classic

ON PROPERTY AUCTION
TUES 9th AUGUST 2016
1pm Sale team with ASBV's 1pm

Progeny on offer by Wallaloo Park, Leahcim,
Kamora Park & Glenlea Park sires

Keller Partners
Jed - 0427 691 858
Craig - 0418 259 049
ramsgate@activ8.net.au

 Accredited Brucellosis Free  MN2 Vacc

www.ramsgatepollmerinos.com.au


Fibre & Fertility on Frame

SWM - TINTINARA SA

OFFERED 80 SOLD 77 AVERAGE \$1,306 TOP \$3,600 (HORN)

When a stud can fill 80 pens of mostly paddock prepared rams without feeders in a dodgy season and average over \$1,300, something has to be going right for the enterprise!

Superior Wool Merino, an extension/inclusion of the great Superior Wool Syndicate which secured top genetics via co-op type purchasing power over the last twelve years. This group accessed top genetics nation-wide and indulged themselves in some of the state's then largest AI programs.

This is a huge 'pull' for commercial clients and potentials to wander through the gates annually knowing that the genetics are in good stead with the predictability of rams purchased a given.

There were only five hornies in the sale with one of them topping the day and aggressively purchased by James Irwin-'Balah'-Morgan SA for his South East property Bonshaw-Keith SA at an outlay of \$3,600.

Interestingly his sire was GP395, the Glenlea Park \$51,000 Classic sale topping poll in 2013 bought by Pimbenia Poll-Wirrulla SA with a gang of semen shares with SWM one of them.

Try these figures fibre purists....

18.5u 2.4sd 12.8cv & 0.3pf yet a GWT of 116% exhibiting great density and lustre.

The ram will be used as a ram breeder to add even more im-pact to both properties from well bred young stock with predicta-bility.

James went on to buy three more flockies at \$800 each.

Another GP395 topped the poll list at \$3,400 and sold to Chad Burbidge-Bowhill SA and Garry Hansen-Cooke Plains SA who will share the ram year in year out. Providing both parties

are happy with the 'health' of both properties, this is an ideal way as to access top genetics at 1/2 the price...not dissimilar to the incarnation of SWS in the first place. (both individuals are members SWS yet not connect-ed with the group with these purchases.)

The ever present Johnson family of Mount Boothby Pastoral-Tintinara SA know their stuff and 'jumped' the crowd by securing lots 1 & 2 for \$2,500 total!

If ever there is a tentative sale start over all sales and years it's this one! Bargains are to be had before things warm up and the Johnsons capitalised! They went on to buy another five including two great GP395 screamers at lots 42 & 48 for \$1,700 & \$1,500.

Possibly the buy of the day though just may have been lot 11, a Leahcim 282 (SWS purchase for \$38,000 as few years back) son at GFW 128% and 17.2u 2.8sd that I secured on behalf of Neil McKenzie-Tintinara SA for \$3,000.

Scott Harlock-Shepherd's Way-Naracoorte SA bought three including a pick lot 9, bred by a syndicate of purchased Wallaloo Park rams for \$3,300. The poll was in the top three of the day in my eyes and included figures of 18.8u 2.8sd at GFW 126%.

Aaron Freeman, capably managing Killara Farms for the late great Rick Munro and now family, bought well securing two GP395 bred sons at lot 3 for \$2,000 and lot 5 at \$2,200.

Aaron is trialling four studs via ram purchases and then running the progeny in a 'stud' type scenario to see which progeny are most suited to his environment - the 'winner' if substantially in front of the other three groups via fleece weight, growth and culling % will then become the stud of choice!

Although present at the sale Peter Kuhlmann-Ceduna SA asked me to pickup three 'exceptional' rams which all fell into my lap within his budget by sale end. A GP395 bred son at lot 39 the absolute pick of the bunch at GFW 137%.

It's a treat to see the astute Brian Landseer-Narilla-Milang SA flanked by nephew Glen rock up at any sale due to his utmost support. They bought five headed by a Bartel-WP955 son right down at lot 36 for \$1,800.

Peter Blacket-Wynarka SA was active and great support with six purchases yet somehow missed out amongst the Stock Journal report. His best buy was lot 49 at \$900 only for a Lorelmo/Willalooka bred snorter at 16.7u & 2.6sd yet GFW 104%.

I grabbed three to average around \$700 for Broughton Vale - Little Topar NSW to build up a few numbers on top of Dirk Stevens big purchasing power at Ridgway Advance.

Reichstein Pastoral averaged over \$1,500 for there nine and competed all day along with the Burge clan securing seven averaging only \$775 for quality.

More volume support from Greg Kennet and the Norman family who added competition throughout the afternoon with ten purchases between them.

CLASSINGS CLASSIC '16

Incorporating
WORLD MERINO INSIGHT
MONDAY SEPTEMBER 5th 2016 AT 1.30pm
Murray Bridge Race Course S.A.

www.classings.com.au
Find Us On Facebook

Superior
SWMool
Merinos

ANNUAL RAM SALE 2nd September 2016 TINTINARA SA

70 Merino and Poll Merino Rams
Elite Wools on Plain Bodies

Richard Harkness
0428 758 028

Bill Walker
0428 973 804

richardharkness@internode.on.net

BORUNG - WAIKERIE SA

OFFERED 60 SOLD 46 AVERAGE \$998 TOP \$2,00 (POLL)



Due to the new face of the principals and some new directions within the stud, Borung run by Brenton and Penny Kroehn just out of Waikerie SA are going very well in such a short time.

To quit 46 rams on sale day and average \$1,000 with new clients adding to the thrill after only a handful of sales under their guard is to be admired.

The rams looked terrific and with their measurements in top order now due to a few directional changes with genetics and design!

A WP567 son was beautifully positioned at lot 2 and topping the day at \$2,000 looked a treat and deserved the accolade. 18.3u 2.9sd 15.7cv & 0.1pf, the poll went to **Critter and Bec Freeman - Penong SA**. The same sire bred and the same client bought the same lot number the sale previous sale and topped it as well!

I bought for three stations as well on the day with the **Ingram's - Aston Station - Poongarie NSW** taking two at \$1,000 each. The first at lot 4 and bred by WP545 at GFW 102% and the second bred by Glenlea Park 003.

Netallie Station - Wilcannia NSW have had a good run with the Borung's and their requirement of four was easy for quality access and the budget. Lots 26 & 27 at \$800 each made the task easy with the second purchase one of the squares in the catalogue and displayed a GFW 113%. Lot 43 and bred by a syndicate of WP rams cost a bit more at \$1,100 yet exposed a GFW 122%. Lot 48 had some of the most exquisite fibre I saw anywhere last year. Too tricky for the punters especially at 16.6u 2.3sd 13.7cv & 0.0pf, I stole him at \$600.

Dirk Stevens - Broughton Vale NSW needed more after his regular Ridgeway Advance haul and I picked up another six to add to the truck! \$800, \$1,000, \$800, \$600, \$600 & \$600 was the order of pricing in buying extremely good animals that won't disgrace themselves in the bush. The pick...lot 23 bred by WP567 for \$1,000 for a great square poll at GFW 108%

The Loxton SA Falting family were great all day picking up four to a top of \$1,800. This high was in lot 3 for a Kelvale bred biggy at GFW 110% at 19.3u 3.2sd 16.7cv. A good GP003 for \$800 in lot 11 also at GFW 110% helped in the average beaker department!

Glen Hoffman-Loxton SA was also great with support snavelling four to a top of \$1,300. This guy was ill catalogued at lot 57 and one should question the classer on his sale position.

Mark and Daryl Pahl-Murray Bridge SA were also good for four with their \$1,200 selection in lot 40 their best for a WP Syn bred ripper.

Mick Evans-Mantung SA was another four ram purchaser to average \$800. Lyndon and Brian Hampel grabbed three including a big square rock at lot 10 for \$1,700 bred by a Leahcim/Kelvale Syndicate.

Gavin Durdin-Halidon SA bought two at \$1,000 & \$800 as did Nadia-Loxton SA to \$1,000. The Schmidts were good for a couple including a very good lot 18 for \$1,300.

Quality Wool bought six for new clients.

An innocent passing comment on the day from a stocky stopped me in my tracks for a brief couple of seconds which will keep me trying harder forever and went something like this, ".....y'know that Classic sale of yours will turn into a beauty one day!"

Are you being taken for granted by your accountant?

Then it's time we had a chat.

At **Marshall Hill** Accountants we offer

- Extensive experience in agriculture
- Accessible and personal service
- Effective tax planning
- Advice on your key financial decisions

For an obligation free on-farm introduction Contact Shaun Porter on 0427 425 129.



SHAUN PORTER



SCOTT MARSHALL

marshall

MARSHALL HILL ACCOUNTANTS

MOUNT BARKER

57a Gawler Street | phone: 08 8391 2260



40th | Annual On Property Auction

60 Quality Rams 60

Rams April / May drop 2015
With all June 2016 test figures on display

Wednesday 31st August 2016, 1pm

Inspection from 11am - lunch at 12 noon.



Brenton & Penny Kroehn

BRUCELLOSIS FREE

9km south of Waikerie, Maggea Road
Brenton: 0427 414 494 Ph/Fax: 08 8541 4494
Email: bkroehn@hotmail.com

PEPPERWELL

OFFERED 36 SOLD 28 AVERAGE \$1,000 TOP \$2,000 (POLL)



Through AI, ET, DNA testing and pedigree recording via the likes of Matchmaker, some Dams are now very well respected and utilised heavily due to their extremely successful and predictable results.

Below is an excerpt from a quick email from Peter Wallis-Glenlea Park on my query of who was who on the mother side that dropped well in his 2015 sale mostly via Embryo Transfer. This result was staggering...

"(In my 2015 sale) Lots 15-\$3,200, 16-\$1,500 and 90-\$3,800 had the same dam and she is 011334 which is the same dam responsible for breeding our top priced Classings ram in 2014 (Lot 1 sold to Calcookara and Pepperwell for \$11,000)

She is also the mother of our first ram sold at Classings last year (2015) for \$9,500 (which is the ram in the photo you had taken under the bridge). Not a bad result from that ewe, 4 rams sold for the year."

Have a look at the meat attributes of the \$2,000 top seller at Pepperwell's 2015 sale! Square backend like the latest Jeep and a barrel loaded with meat and density of fibre.

This stud hit its straps in 2015 albeit more clientel required to witness great things in motion which I can extend on after viewing the 2016 team only last week (early May).

Richard Henschke-Angaston SA set the tempo right from the onset with lot 1 selling for \$1,900 and bred by the mighty L858.

Over 1/3 of the sale were from this guy who breeds low wastage and so many winners that if you're stud ain't using him....

Another son nicely positioned at lot 2 cracked \$1,800 with a body weight of 109kg fresh from the paddock at 17.2u & 0.0pf and sold to White Park-Melrose SA for \$1,800.

The fascination for 858 stock continued with Richard Henschke again onto it early in securing another son at lot 3 for \$1,800

and lot 6 for \$1,700 that boasted 16.5u 3.0sd @ 0.0pf.

Top priced as pictured was sold to the Holt family-Keyneton SA for \$2,000 and as mentioned, deserved top clang award. (see photo) The following is Hansi Graetz's own commentary on this top bloke. "Gutsy low frequency long stapled white waxy wool. Plain head and legs. Big rump and very heavy + EMD is one of my favourites."

The Kubenks-Murray Bridge SA were great support with four purchases, the best in my eyes lot 29 at \$900 loaded with the good fibre and shape with a15.7u at 0.0pf.

Bundilla Pastoral were good for three in the \$800-\$1000 bracket. Rodney Seidel-Sedan SA who I went to school with yet is a no show on sale day bought three through his agent - the best at lot 8 featuring all we like about merinos.

DM & SM Schirmer-Cambrai SA was amongst those buying three for the day paying pittance for great quality - \$800, \$600 & \$500. His best was an 858 scorchier in lot 14 at 17.3u 3.1sd & 0.0pf at the \$800.

The Schiller clan from Strathalbyn SA bought their three easily as well paying a top of \$800 for a monty of a plain poll in lot 23.

\$600, \$800 & \$500 for three very good flockies for Broughton Vale-Little Topar NSW to add to the quality pile was a luxury considering how good they were!

The Pepperwell Poll is a stud to monitor for bang for buck yet with a growing popularity I would like this commentary to disappear as word spreads of the great quality within.



PEPPER WELL POLL MERINOS

ON PROPERTY AUCTION 1.00PM TUESDAY 30TH AUGUST 2016
55 JUNE 2015 DROP RAMS



- Avg 100 day WWT 39kg
- Grass Fed
- Minimal Shedding
- No Foot Trimming
- ASBV's

- Very Fertile
- Good Doing
- Large Framed
- Early Growers

- Long Bold, Deep Crimping White Wool
- Mature Ewes 20 Micron
- Brucellosis Free
- OJD VAC since 2004
- PFC 350 OJD FREE

ASBV WORKSHOP DATE TO BE ANNOUNCED

Pepperwell, 84 North Rhine Road, KEYNETON SA - 1km North of Township

For more details contact Hans Graetz

MOB: 0427 790 676

PH: (08) 8564 8337

EM: pepperwell1@gmail.com

How do I compare as a commercial flock to those studs utilising ASBV's?

Chad Burbidge's queried me on the striving of many commercial growers to select rams with high ASBV'S for YCFW when they don't know where they actually sit themselves. ie. There is no reason for David Eckert who runs a sensational commercial merino enterprise to select YCFW 15-17 when his own flock may be sitting at YCFW 20!

We're never going to know unless David fastidiously tests and records every animal on the joint which would add no value whatsoever at huge cost to a commercial enterprise.



But now there is potential to assess just where that commercial flock sits compared to more measured stud version.

I thank Anne Ramsay of Stenhouse Consulting again for her assistance in answering this one....

"The key message is that you need to be genetically benchmarked to use ASBV's effectively. And to do this could be quite simple if the Sheep CRC's commercial benchmarking tool is finalised.

The tool will be a game changer for commercial flocks.

Under this system flocks could possibly take 20-40 random blood

cards on their lambs (or tissue samples using the new Allflex TSU system) - send to the CRC who uses their genomic technology to provide an estimate of where the commercial flock sits for each production ASBV.

A real time genetic benchmark which will only be available for commercial flocks. Tom Granleese is piloting the project.

If the Sheep CRC system doesn't work there are other ways to determine what ASBVs to invest in - like bringing in 5 rams with known

ASBV's and comparing their progeny with the progeny of the sires you have on hand. Could just measure a GFW and FD and body weight to do this. And you offer really competitive fleece testing rates for clients don't you Bill?!!

CLASSINGS CLASSIC '16

Incorporating
WORLD MERINO INSIGHT
MONDAY SEPTEMBER 5th 2016 AT 1.30pm
Murray Bridge Race Course S.A.

www.classings.com.au
Find Us On Facebook

CHARRA HOGGET COMPETITION

Possibly twenty years ago the Jim Watt's SRS workshops hit the Far West Coast with Critter Freeman hosting yet another fascinating day at his property at Penong SA.

Wool was at its worst and any spark to reinvigorate a weary grower was welcome which these travelling information days were famous for. I can still remember clearly Jim's face when he opened up the wool of a ewe hogget the day before the workshop. With a gritty dust from tip to base and every one in the mob like it, defining groups was going to be a little harder due to the harshness of the terrain that year.

The day was a complete success and from that I had discussions with a few of the locals afterward on ways and means of breeding stock to suit the environ.

I now class for Critter and Bec and his brother in law Butch (and Jodie Dunn). They both undertook large AI programs to get the ball rolling initially and now purchase genetics from Lucernbrae, Borung and Lone Gum with great success.

The Charra Hogget Competition has been running for years with three ewe hoggets selected by local growers to be objectively measured, fleece weighed and body weighed for a total income on the day.

Both clients have done well over the years with Critter taking out the honours in 2016 over fourteen teams for meat and wool.

His adjusted fleece weights worked out on a wool growth per day basis as to even up all teams due to different shearings, Total animal worth shown.

Hogget 1: 6.0kg 17.9u 62% 56kg BW \$175.10
Hogget 2: 8.17 18.3u 58% 44kg BW \$137.57
Hogget 3: 7.78kg 17.8u 59% 51kg BW \$159.47

The three youngsters grossed \$649.73 which whilst this is a guide only on the day, still shows the value and worth of this popular breed at the minute.



MERINO LIFETIME PRODUCTIVITY PROJECT

I was on the side of the road just out of Cascade in WA in February 2015 helping Stuart Parker keep a truck upright after he had just had a massive blowout when Geoff Lindon of AWI rang me. His suggestion was that I consider being part of a committee to help setup a new project involving merino performance. Intrigued I let go of the tilting truck and noone's seen Stewy since!

After a few very productive face to face meetings at AWI headquarters, teleconferencing, as well as a lot of formulating and funding application, the project has now come to fruition. Tuloona- Harrow Vic., is the first site to have progeny available for assessment in 2016.

The project MerinoLifetimeProductivity Project (MLP) is all about exploring the drivers of lifetime productivity.

Over the lifetime of a ewe, does her early performance hold through life or are there variables that affect her compared to her peers? Is there an age period of a ewe where gathered information is at its most valuable? Is 10 months of age data solid enough for accurate decision making?

MLP project manager, Anne Ramsay, in a recent spiel to The Land after the first project Field Day suggests, "We don't know all the lifetime relationship between wool, meat, fertility, disease and welfare, and to have effective selection programs we really need to better understand relationship between all these elements."

Huge amounts of data will come out of this project and I am fortunate to have been asked to be one of two classers for the Tuloona-Balmoral effort where all the good info mustered will be divulged in due process.

During the random classing there is no familiarisation with sire groups which are purposefully coded and hidden from the prying eyes of the classers! At the corresponding Tuloona Field Day held two days after the classing, all of the bloodlines were exposed to the public in individual pens.

It was here that the classers finally had an idea about what sire may have

featured well and those that didn't do so well, and there were a few surprises! I was impressed with a sire group that I haven't had a connection with before, and I'm keen to trial this bloodline further.

The project will also assess the worth and accuracy of the classers at this early stage compared to the ongoing commentary with the same ewes over a possible six year classing span. The following is a brief description of the project's goals direct from an MLP handout.

So what's this project about?

Australian Wool Innovation (AWI) and the Australian Merino Sire Evaluation Association (AMSEA) have teamed up to deliver MLP.

The project offers a unique and exciting opportunity to understand lifetime Merino productivity, the relationship between lamb and wool production and the role that genetics plays in generating lifetime returns.

Four independent sites located across Australia will be involved in collecting and recording this data. The sites will operate like standard sire evaluation sites – following the rigorous and independently assessed measured and visual assessment protocols.

In total 120 sires will be joined to 90 ewes each to generate the 3,600 F1 ewe progeny that will form the basis of the project. At the conclusion of the standard sire evaluation (generally once progeny are 18 to 24 months of age), AWI will support the ongoing measurement and visual classing of all F1 ewe progeny through 4-5 joinings capturing reproduction records and annual shearing data.

The sites involved in the project are located in diverse environments and vary in sheep type, lambing dates, seasonal challenges and shearing dates.

The first site - Elders Balmoral - Harrow, Vic. joined in 2015 with 24 sires entered and have an additional 24 sires entered in 2016.

Two new sites have commenced in 2016 with 13 sires joined at MerinoLink, Temora (NSW) and 15 sires joined at Pingelly in Western Australia. It is hoped that a fourth site will be established for a joining in 2017.



The project has been designed to answer many questions frequently discussed in the Merino industry. What is the impact of selecting for growth, reproduction and carcase traits on Merino Lifetime productivity? Why do some animals consistently perform year in and year out whilst others fade with time? Are there any factors that might help us to better predict superior lifetime performance? And can animals selected at very young ages have superior lifetime productivity?

The broader aims of the project are to:

1. Where necessary, provide the evidence and data that the current systems can be enhanced to more accurately predict lifetime productivity.
2. Demonstrate to the industry in a commercial environment the cost benefit relationship of measuring multiple adult traits throughout the lifetime of an animal.
3. To validate the current breeding value technology across sheep types and environments.
4. Provide a substantial amount of reproduction records to the MERINOSELECT database, allowing the industry to more accurately assess the relationship between all the components that make up lifetime productivity.
5. Provide a common focus for a wide range of ram breeders with differing breeding philosophies.

**SIRES USED IN 2015 APRIL
JOINING AT TULOONA - HARROW
VIC. FIRST ASSESSMENT
COMPLETED IN APRIL 2016**

Billandri Poll 130087
Bogo 111424
Bundaleer Poll 13V741
Bundilla 111265
Centre Plus Poll 207316
Darriwell 130941
Glenpaen 120042
Greenfields Poll 130599
Hazeldean 11.43
Kurra Wirra SR5681
Leahcim Poll 090918
Leahcim Poll 123153
Merinotech WA Poll 100081
Mokanger 120092
Moojepin 100248
Mumblebone 130389
Mumblebone 130850
Nareeb Nareeb 130380
Nerstane 130467
One Oak No.2 R56
Roseville Par 140019
The Mountain Dam ESA004
Tuckwood Poll 121021
Yalgoo 120043
Yiddinga 130374

**SIRES USED IN 2016 APRIL
JOINING AT TULOONA - HARROW
VIC. FIRST ASSESSMENT
APRIL 2017**

Centre Plus Poll, 707115
Glen Holme, 141077 (Dohne)
Grass, R4
Greendale, 120012
Greenfields Poll, 140345
Greenland, 2.366
Hannaton Poll, 120048
Hazeldean, 11.3542
Kiandra Poll 140757
Koorringal, 130519
Kurra Wirra, SB5585
Leahcim Poll, 090918
Melrose, 12UGB060
Mumblebone, 140026
Nerstane, 100919
One Oak No.2, R56
Stockman Poll (Stilts), 090853
Terrick West Poll, 122220
The Mountain Dam, ESA004
Trefusis, 110482
Tuckwood Poll, 131026
Wallaloo Park Poll, 120912
Woodyarrup, 120175
Yiddinga, 141989

**SIRES USED IN 2016 APRIL
JOINING AT MERINOLINK NSW
FIRST ASSESSMENT APRIL
2017**

Bella Lana, 130296
Boyanga, 145112
Glen Donald, 120014
Greendale, 120012
Leahcim Poll, 090918
One Oak No.2, R56
Pastora Poll, 082893
Poll Boonoke, PB2020
Pooginook Poll, 140632
Roseville Park, 140611
Trigger Vale Poll, 140477
Wattle Dale, 140754
Wurrook, 130149

The project has attracted considerable interest to date with ram breeders eager to assess sire lifetime performance through their daughters. The project is looking for sire nominations for the 2017 joining. See the MLP project website for contact details.

For more information regarding the project please explore the website.

www.wool.com/MLP

**SIRES USED IN 2016 APRIL
JOINING AT PINGELLY WA FIRST
ASSESSMENT APRIL 2017**

**Find out why
so many
producers are
joining the**

Q

- Family values
- True client focus
- Stable and reliable
- Simple and transparent
- Australian owned and independent



**QUALITY
WOOL**

**QUALITY
LIVESTOCK**

www.qualitywool.com www.qualitylivestock.com.au

HEAD OFFICE: 08 8341 0000



Billandri Poll, 130641
Boolading Blues Poll,
120708
Claypans Poll, 130597
East Mundulla (Jonty),
090137
Ejanding Poll, 145096
Haddon Rig, 2.715
Hazeldean, 11.43
Ingle Poll, 130387
Leahcim Poll, 090918
Merinotech WA Poll,
100081
Moojepin, 140377
One Oak No.2, R56
Rhamilly Poll (Benny),
110330
West Plains Poll (Merc.)
110004
Wyambeh Poll, 140141



CLASSIC'16: RAMSGATE

A momentous day at Ramsgate-Tintinara SA with the On Property Sale team catalogued and the Classic'16 Big 4 selected.

Possible team leader Ramsgate 150204 bred by a purchased Kamora Park sire KP777 (from Classic'14) was selected for purity of fibre as well as a great stance with hocks and leg structure typifying the quality control used for buyer confidence at all Classic sales.

Two GP 767 bred rippers and one RA350 follow in the lineup all exhibiting bold, white silky fibre of high density that puts this stud right up with the best.





CLASSIC'16: SWM

The SWM-Tintinara SA ewe hogget and young ram classing over 6th-7th July was the stud's best ever for quality and depth with the pick three or four rippers for Classic'16 a welcome return after a few year's absence.

That fibre shot is typical of the 'specials' in the ewe hogget classing with this girl measuring 128mm at 8 month's growth!! Older girls are shorn 6 monthly at around 65mm for length suffering no discounts with 49-66Nkt indicating the strength associated with shearing twice per year as well as other associated bonuses.

The pictured poll was AI bred by Gunallo's Pride and the other, possibly the only horn entering into Classic'16 bred by Wallaloo Park 36. Both rams ooze of lustrous fibre quality and density on great frames for this part of the year especially considering minimal preparation.



RICES CREEK - TINTINARA SA

OFFERED 60 SOLD 48 AVERAGE \$1,232 TOP \$4,000 (POLL)

The Rice's Creek sales lobs right on the same date as another sale we attend so I will rely on and thank the Stock Journal report written by Elizabeth Anderson.

"A HIGH quality fleece induced buyer Peter Glynn, Rhynie, to pay the top price of \$4000 for a ram at Rices Creek's Tintinara on-property sale.

Mr Glynn said he was "chasing well-nourished wool" to use over his 1400 self-replacing Merinos. "We're breeding a few rams ourselves for our own use and he is what we are aiming to breed," he said.

The ram weighed 102 kilograms, and had a six-month fleece weight of 6kg, with wool measurements of 19.5 microns, 2.6 standard deviation, 13.3 coefficient of variation and 100 per cent comfort factor.

The second top price of \$3300 was paid by the Richardson Brothers, Tintinara, for a 100kg ram measuring 18.3M, 2.5SD, 13.7CV and a 99.9pc CF. The Richardson Brothers purchased four rams, averaging \$1425.

Rices Creek co-principal Mark Vandeleur said he was happy with the depth and evenness of the line-up presented.

"We offered a few more this year, which gave people a bit more selection, and they paid good money for the top end," he said.

And meanwhile up at Saddleworth where 84 sold from 84 offered averaged \$1,644 to a top of \$4,000.

AN additional 14 rams in this year's main auction at Rices Creek Poll Merino stud, Saddleworth, did not affect clearance rates, with all 84 sold.

The top price ram went to JW&PJ Bowden, Rhynie, for \$4100. The ram, sired by Collinsville Premier 102, had wool measurements of 22.5 micron, 3 standard deviation, 13 coefficient of variation and 99.6 per cent comfort factor.

Bidding in the mini auction started at \$800, finishing with an average of \$852. Of the 50 rams offered, 36 sold.

Rices Creek's Jim Vandeleur said he was happy with results at the auction.

"We put an extra 14 in the main auction this year and still cleared them," he said. "Last year was our inaugural year and we had a total clearance then."

He said the top price ram weighed 119 kilograms with a fleece weight of 122pc. "Collinsville Premier 102 progeny sold well throughout the sale," Mr Vandeleur said.

"The Bowdens have been buying here for close to 60 years." "He has stylish wool with good thickness and density," Phil said. "He is a big sheep in terms of body size.

"We breed flock rams so will put him over selected ewes."

Paul Doering, Walmona Pastoral, Truro, bought 19 rams for a \$1542 average. He said his family had been long-time clients of the Vandeleurs, buying their rams for the past 57 years.

He said he had always been happy with the quality of the wool and this year was no exception.

"The frame and the wool is good and the fertility is also good but mostly it is beautiful wool and I loved the texture," Mr Doering said.

Quality Wool Mid North auctioneer Simon Seppelt said Rices Creek had produced a quality line-up. "There was exceptional depth, length and exciting sweet wool on the rams," he said.

"I was impressed by the size, length, width and breadth of the sheep and there was quality right to the back of the catalogue.

"It made for strong competition among bidders."

RICES CREEK POLL MERINOS

On property Auction
Tintinara - 4th of August
Saddleworth - 30th of August

Jim Vandeleur - Saddleworth (08) 8849 2062 or 0429 492 062
Mark Vandeleur - Tintinara 0417 871 054

GUNALLO - PINNAROO SA

OFFERED 90 SOLD 86 AVERAGE \$1,347 TOP \$3,200 (POLL)



What a great sale for the Schroeders! With the Mallee season as well as wool and meat markets in a healthy state, the sale had the makings of being one of the best.

Even greater stories down the track considering the stud's enormous success at Classic'15 and Adelaide sales.

Top price was at \$3,200 for a 130kg brute selling to Altus Pastoral-Lameroo SA. The poll was ET bred, a twin, was the squares in the catalogue and bred by SuperSire 'Pride' who in turn was created by another SuperSire KP37 from a great mum!

The sale began at a cracking pace with Wayne Schenke-Murray Bridge SA wisely getting in early with lots 2 and 3 under the belt at \$1,800 & \$2,000 for a KP37 121kg snorter.

Partner in crime and from the same village, Glen Richards also bought well with two for the day including a ripper lot 9 for \$2,000 that if it wasn't for a bit of smut around the muzzle would never have left the joint!

Neil Wormold-Wunkar SA bought a great lot 5, bred by Roemahkita 1269 for \$2,200 and the Zerk family, \$2,600 for a 110kg L2918 son at 19.9u 2.5sd & 12.6cv.

Lot 15 commanded attention all morning and was snapped up for \$2,600 by McPiggery for a KP37 bred fella with outstanding figures, 110kg and great fibre which Gunallo and McPiggery are well attuned to.

Bulk buy purchasers are critical for a successful day and the Brewis family-Willaura Vic. made sure that came to fruition. They averaged over \$1,100 for their nine pickups with one of the best right down at lot 71 for yet another KP37 son.

As a promotion for carting rams all over the country side, Lyden and Amy Brewis stumbled across Gunallo at Hamilton SheepVention a month before and liked what they saw. A nine ram haul suggests they were impressed on sale day.

Marra Farms-Netherby Vic averaged \$1,816 for six including a 'screaming' lot 8 again bred by the Roemahkita sire for \$1,800 at 112kg. The Smiths at Yanac Vic. were also active with their six to average \$850.

In Gunallo's 2014 sale, Lone Gum bought the top priced poll for \$3,000 at lot 42 fro a KP37 son. In the 2015 sale and nearly in the same spot at lot 44 and again a KP37 son, was a \$2,800 cracker that I bought for Lone Gum in Stuart Everett's absence. Gun428 had the outstanding ASBV's of YCFW 21.4 YWT 8.1 YSL 11.7 YFAT 0.3 & YEMD 0.1.

Hopefully this bloke will drop as well as the 2014 version whee that ram's stock on February classing are amazing and puts this sire into A.I. territory.

Another six ram purchaser was the Dabinett clan with Rah and the boys selecting well through to the end of the sale.

I bought four for Broughton Vale-Little Topar-NSW to average around \$700 and add to the great collection over a few selected studs.

The list of buyers is large and hard to narrow down to quick mentions. Jock Krause, Callum, Heinze, Meyer, McArthur, Nuske, Mallee Products, Yards and a few more all chipped in to ensure the Gunallo sale was one of the most exciting ever.

NEED AN ELECTRICIAN?

SPLIT-SYSTEM AIR CONDITIONING
NEW INSTALLATIONS AND RENOVATIONS
RENTAL PROPERTY MAINTENANCE
DOMESTIC, COMMERCIAL & INDUSTRIAL MAINTENANCE
ENERGY SAVING CONSULTATION

Call Now
0413 784 024



WALKER ELECTRICAL
SOLUTIONS & SERVICES

Walker Electrical Solutions and Services
14A Broughton Place
North Adelaide SA 5006

Ph: 0413 784 024
Email: walkerelectricalsolutions@gmail.com

DONE AND DUSTED...



Cullings' 16 Newsletter completed Sunday July 10th on what is deemed to be the roughest day of the year with forecasts suggesting big rain, wind and sand bagging for some areas.

I'm hoping this 2016 edition is of interest to many even those who have never been part of any Artificial Insemination programs. There are a lot of helpful hints in that article on regular in paddock joinings where diet and teaser information could be of value to your enterprise for

increased lambings.

As my classing travels takes me across three states it's glaringly obvious that the quality of our merinos just keeps on improving with fibre quality, density combined with improved carcass traits and increased weaning percentages all part of the scenario. ASBV's may just have had the desired effect as to reasons why!

I would encourage every wool grower, service provider and industry supporter to get on down to the Murray Bridge Racecourse on Monday September 5th to witness the high quality Classic'16 sale and the debut of the World Merino Insight (WMI). This event will cater for all facets

of this great industry, in full flight at the minute with the wool and meat markets on song combined with current rainfall events shaping 2016 to be one to remember!

The Classic'16 selections are a treat and will be on display at various days nationally including Bendigo, Hamilton, Mallee & South East Field Days.

Every stud in the nation has been invited to be part of WMI and also to enter into the Classic'16 sale. A few new faces already with Penrose WA, Kiandra SA, Orrie Cowie SA, Coddington Poll NSW, Radnor SA, Terrick West Vic & Toland Poll Vic registering interest to sell.

I thank a patient wife, Jarrad Weyland who puts this thing together for me after being bombarded with a hundred rough files and finally Print City-Murray Bridge SA for rushing the first 100 draft copies to make sure I'm armed and dangerous at Bendigo Sheep Show. Thankyou to contributors and advertisers.

Laboratory in full swing at the minute with Rose and favourite daughter in law Tay under the pump to meet deadlines.



See you on September 5th!

Ewe hogget classing at ol' mate Rick Munro's-Colbatch SA property (and in good hands with Aaron Freeman at the helm) was a bit of a challenge this year (5th July). Adelaide had the wettest 24 hours since 1941 with that same front only skimming the southeast with 8mm.

To class or not?! I suggested to Aaron and father-in-law, Brenton Jones that as soon as one hogget ended upside down in the mud it was all over....we finished 700 of them at around three that arvo!

Huge body weights and fleece weights to come, the flock's in great order and in trial mode at the minute with four groups under the microscope.



CLASSINGS P/L MERINO BREEDING ADVISORY

"Breeding predictability comes with experience – Classing nationwide for over thirty years."



Please go to our website for classing concepts:

www.classings.com.au

Bill & Rose Walker
25 Sturt Street, Murray Bridge SA 5253

CLASSINGS CLASSIC '16
MONDAY 5th SEPTEMBER
MURRAY BRIDGE RACECOURSE

Office 08 8532 3065

Mob 0428 973 804

classing@internode.on.net

GLENLEA PARK MERINOS & POLL MERINOS



Michael Lawrence ph 0439078872

On property sale: Friday August 12th 150 Poll Merinos



Pat Larson ph 0407722737



150411 – Sire: Poll Bonooke 3.0040
Grandsire: Wallaloo Park “Real Deal”
Micron: 18.6, S.D. 3.5, C.V. 18.8, C.F. 99.7
A heavy cutting ram with a bold nourished wool. He is structurally very correct and is an upstanding ram with a very long body. To be offered for sale at Classings Classic Ram sale.



150881 – Sire: Moorundie Park 306
Micron: 19.9, S.D. 2.8, C.V. 14.1, C.F. 99.8
A heavy cutting ram with a quality, gutsy wool. A meaty ram that is structurally correct and very pure. 881 has a very quiet temperament.
Stud Reserve.



Offering rams at our On Property Ram Sale and Classings Classic Ram Sale
Displaying rams at Bendigo, Keith, Murray Bridge and Hamilton

Peter and Marianne Wallis PO Box 32 PINNAROO SA 5304 M: 0428 766 126 peter@glenleaparkmerinos.com.au

www.glenleaparkmerinos.com.au



RIDGWAY

Poll Merino Stud

On Property Sale | Monday 8th August
160 Poll Merinos

Offering at Hamilton, Classings Classic & Adelaide Show.

Displaying at Bendigo, Keith & Murray Bridge.



Ric, Gail, Matt & Rachel Ridgway

Phone: (08) 8578 8039

Mobile: Ric 0459 432 679 Matt 0439 460 554

Email: merinos@ridgwaymerinos.com.au

Facebook: www.facebook.com/ridgwaymerinos



www.ridgwaymerinos.com.au